



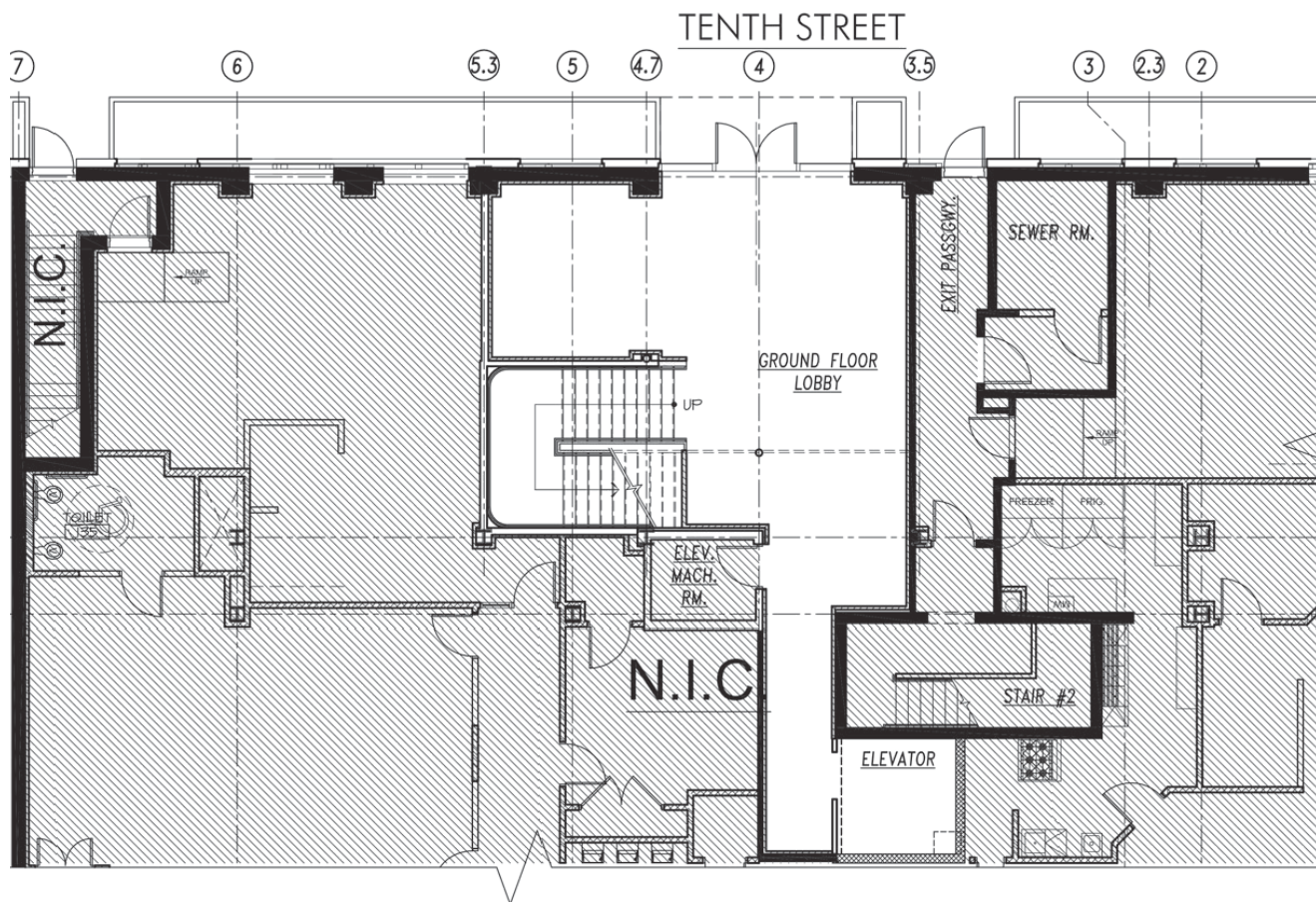
# 255 BRUNSWICK STREET

## OFFICE/ FLEX/ STUDIO SPACE

### BUILDING HIGHLIGHTS:

- Private Lobby
- Exclusive Elevator
- Lounge & Kitchen
- On site parking
- Outdoor Space Available
- Located in Downtown Jersey City
- Close to Hamilton Park
- Kiddie Academy®

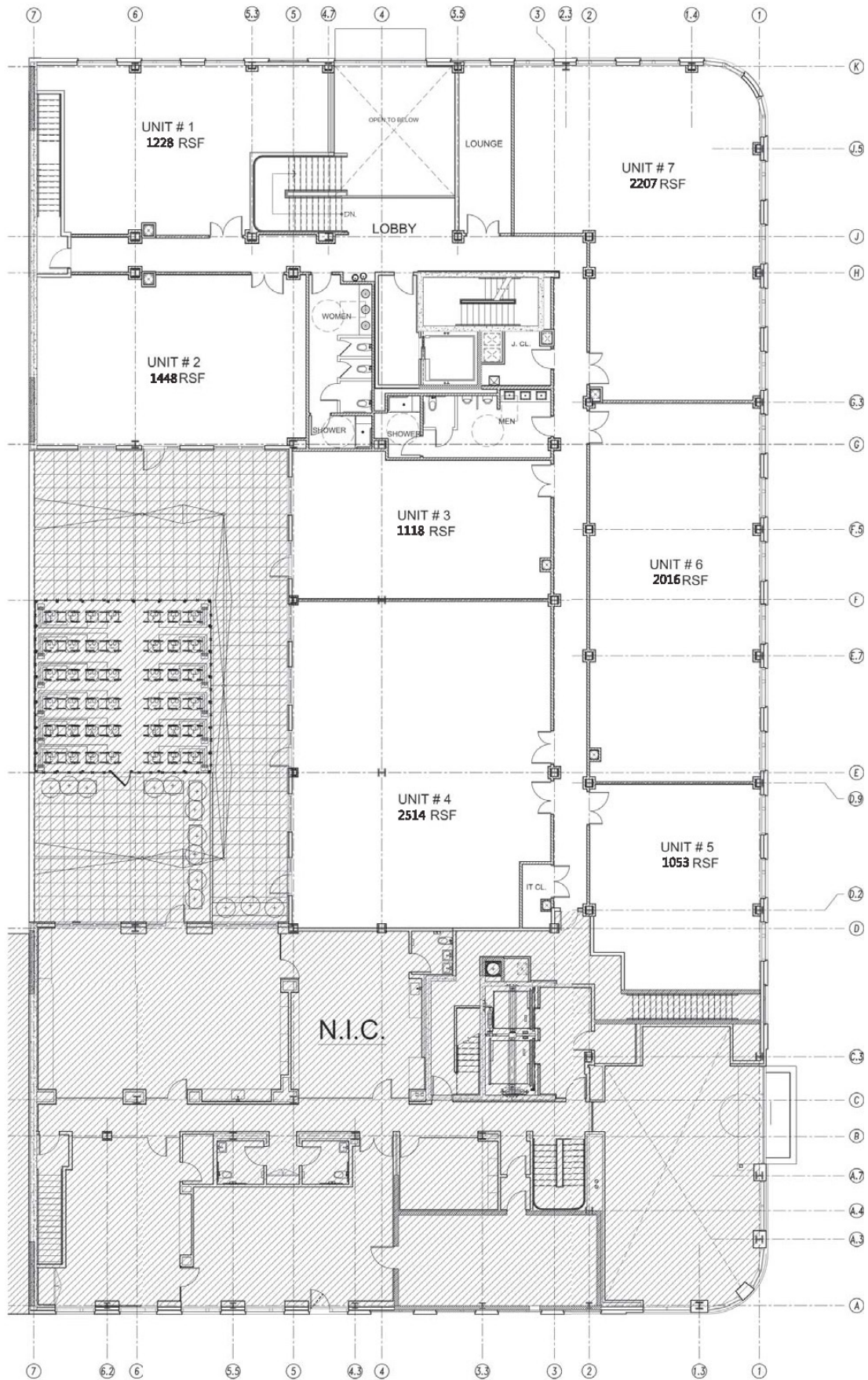
BUILDING	Class A
AVAILABLE	13,000 ft
AREA	First Floor
RENTAL RATE	\$32 RSF
POSSESSION	March 2016
TERM	Through 2021



**1** **GROUND FLOOR PLAN**  
 SCALE : 1/8" = 1'-0"



# Tenth Street

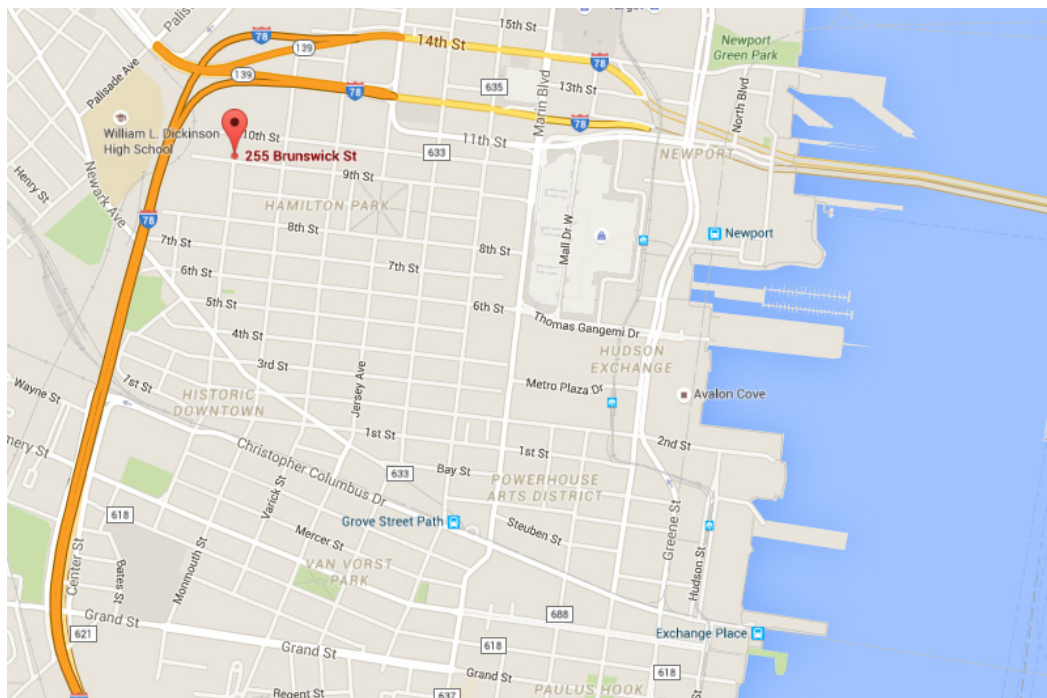


Brunswick Street

**2** FIRST FLOOR PLAN  
SCALE: 1/8" = 1'-0"

# Ninth Street





## FOR MORE INFORMATION, CONTACT

**Darden Moorefield**  
Commercial Realtor ®  
917.554.4884  
darden@JCityRealty.com

**Don Johnston**  
Commercial Realtor ®  
917.439.7488  
don@JCityRealty.com

