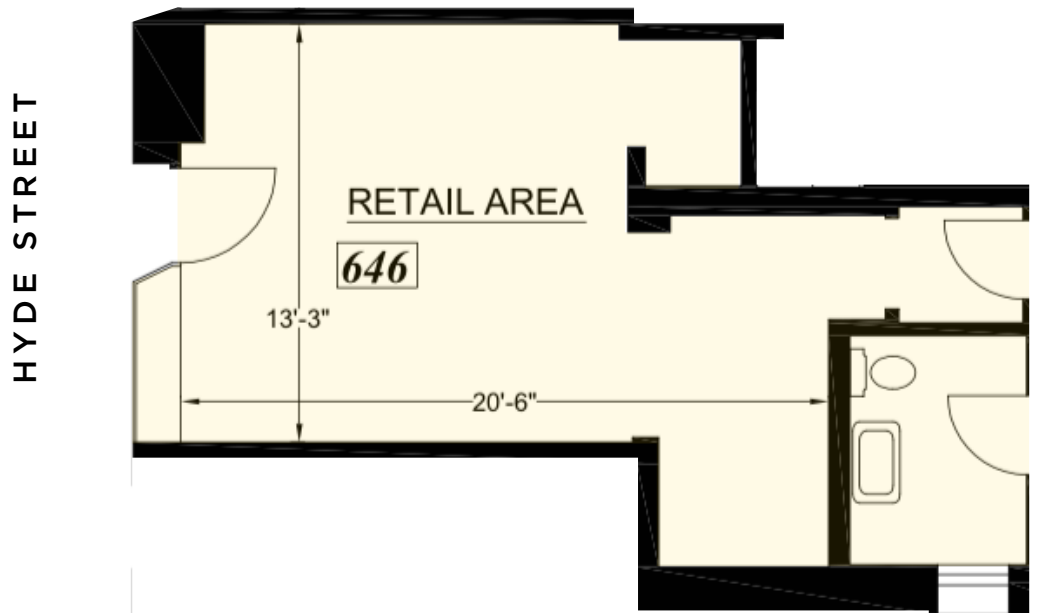


646
HYDE
SAN FRANCISCO, CA



maven
RETAIL

GROUND FLOOR RETAIL/OFFICE



FEATURES

- +/- 412 SF
- High visibility location
- Period architectural details throughout
- Great signage opportunity
- Short or long term lease possible
- Attractive building with great co-tenancy
- Nearby businesses include Tonic, Milkbean Café, Mensho Ramen, Bandit, Jane, Saratoga, Scullery, Redford, and more.

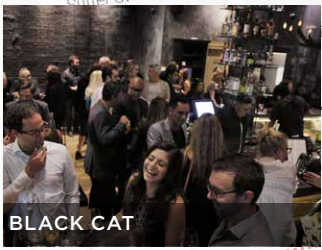
646 HYDE

SAN FRANCISCO, CA

1. Mr. Holmes Bakehouse
2. The Saratoga
3. Jane
4. Bandit
5. Moulin Rouge Cafe
6. Rum & Sugar
7. Resolute
8. Elephant Sushi
9. Osha Thai
10. Mensho Ramen
11. Scullery
12. Redford
13. Bourbon & Branch
14. The Owl Tree
15. Napa Valley Exchange
16. Lers Ros
17. Hooker's Sweet Treats
18. Jessica Silverman Gallery
19. Black Cat
20. Brenda's French Soul Food
21. Philz Coffee
22. 826 Valencia
23. Golden Gate Theatre
24. Peet's Coffee
25. CVS Pharmacy
26. BevMo
27. 24 Hour Fitness
28. FedEx Office Print & Ship
29. CPMC Hospital Campus
30. Mayes Oyster House
31. Peoples Barber
32. Barnzu
33. Great American Music Hall
34. La Cocina



SARATOGA



BLACK CAT



REDFORD



LEERS ROS



SCULLERY



PHILZ COFFEE



CIVIC CENTER





CLIFT HOTEL



BOURBON & BRANCH



GREAT AMERICAN MUSIC HALL



GOLDEN GATE THEATRE



NEIGHBORHOOD



MIKKELLER



WARFIELD THEATRE



REDFORD

646 HYDE

SAN FRANCISCO, CA

maven
RETAIL • OFFICE • INDUSTRIAL

JOAN RUYLE

415.404.7313

joan@mavenproperties.com

BRE #02006025

SANTINO DEROSE

415.404.7337

sd@mavenproperties.com

BRE #01338326

NOTICE: This information has been secured from sources we believe to be reliable but we make no representations, warranties, express or implied, as to the accuracy of the information. Listing broker has been given enough information to provide only a preliminary interest in the property. The materials are not to be considered fact. The information contained herein is not a substitute for thorough due diligence investigation. References to square footage, zoning, use, or age are approximate. Please contact the San Francisco Planning Department to verify zoning at (415) 558-6378, as neither broker or landlord represent that this space is suitable for your use. Tenant or Buyer must verify the information at their own expense and bears all the risk for any inaccuracies. By receiving these materials you are agreeing to the disclaimers set forth herein. BRE#01878802

466 Green Street Suite #203 | San Francisco, CA 94133 | 415.781.7700