

**FOR SALE**

\$275,500.00

**Showroom/Office/Warehouse**

4303 SW High Meadows Ave Palm City FL 34990



**Jeremiah Baron**  
& CO.

Commercial Real Estate, LLC

**Listing Contact:**

Janine Landolina | 772-285-2599 | ileaseit@gmail.com

Office: 49 SW Flagler Ave. Suite 301 Stuart FL, 34994 | 772-286-5744

# Property Details

# Showroom/Office/Warehouse

4303 SW High Meadows Ave Palm City FL 34990

<b>PRICE</b>	\$275,500.00
<b>UNIT SIZE</b>	1,500 SF
<b>BUILDING TYPE</b>	Flex Space
<b>ACREAGE</b>	10.25 AC
<b>FRONTAGE</b>	1132.36'
<b>TRAFFIC COUNT</b>	9,400 AADT ( via Murphy Rd N/O High Meadow)
<b>YEAR BUILT</b>	2006
<b>CONSTRUCTION TYPE</b>	Masonry
<b>PARKING SPACE</b>	40 Free Surface Spaces
<b>ZONING</b>	A-1, LI
<b>LAND USE</b>	Industrial
<b>UTILITIES</b>	Martin County Utilities

NO WARRANTY OR REPRESENTATION, EXPRESS OR IMPLIED, IS MADE AS TO THE ACCURACY OF THE INFORMATION CONTAINED HEREIN, AND THE SAME IS SUBMITTED SUBJECT TO ERRORS, OMISSIONS, CHANGE OF PRICE, RENTAL OR OTHER CONDITIONS, PRIOR SALE, LEASE OR FINANCING, OR WITHDRAWAL WITHOUT NOTICE, AND OF ANY SPECIAL LISTING CONDITIONS IMPOSED BY OUR PRINCIPALS NO WARRANTIES OR REPRESENTATIONS ARE MADE AS TO THE CONDITION OF THE PROPERTY OR ANY HAZARDS CONTAINED THEREIN ARE ANY TO BE IMPLIED.

Exceptional 1,500 sf mixed-use condo space located in a prime location of Palm City. The property is fully built-out with high-end finishes such as marble floors, crown molding, an open showroom or workspace area, conference room, bathroom, kitchen area and a warehouse with grade level roll-up door, and high-end interior doors on the first floor. The property has an additional 2nd floor with 800 sf that features a mezzanine office that is fully air-conditioned. There is signage along the Florida Turnpike. Close to the I-95 and Turnpike Interchange.



**Jeremiah Baron**  
& CO.  
Commercial Real Estate, LLC

## Listing Contact:

Janine Landolina | 772-285-2599 | ileaseit@gmail.com

Office: 49 SW Flagler Ave. Suite 301 Stuart FL, 34994 | 772-286-5744

## 2017 Demographics

Total Population		Average Household Income		Average Age	
1 Mile	3,076	1 Mile	\$94,384	1 Mile	42.70
3 Mile	24,278	3 Mile	\$91,562	3 Mile	46.80
5 Mile	62,902	5 Mile	\$80,265	5 Mile	45.10

**Jeremiah Baron**  
& CO.

Commercial Real Estate, LLC

### Listing Contact:

Janine Landolina | 772-285-2599 | ileaseit@gmail.com

Office: 49 SW Flagler Ave. Suite 301 Stuart FL, 34994 | 772-286-5744



# Zoning Information

# Showroom/Office/Warehouse

4303 SW High Meadows Ave Palm City FL 34990

## IL INDUSTRIAL, LIGHT.

1. Purpose. The purpose of this district is to provide and protect an environment suitable for light manufacturing, wholesale, and warehousing activities that do not impose undesirable noise, vibration, odor, dust, or other offensive effects on the surrounding area, together with such other uses as may be necessary to and compatible with light industrial surroundings. The number in "( )" following each identified use corresponds to the SIC Code reference described in Section 3.01.02(B). The number 999 applies to a use not defined under the SIC Code but may be further defined in Section 2.00.00 of this Code.

2. Permitted Uses:

a. Business services. (73)

b. Communications - including telecommunication towers - subject to the standards of Section 7.10.23. (48) c. Construction services: (1) Building construction - general contractors. (15)

(2) Other construction - general contractors. (16)

(3) Construction - special trade contractors. (17)

d. Engineering, architectural and surveying services. (871)

e. Commercial fishing. (091)

f. Laundry, cleaning and garment services. (721)

g. Local and suburban transit. (41)

h. Manufacturing:

(1) Food and kindred products. (20)

(2) Tobacco products. (21)

(3) Textile mill products. (22)

(4) Apparel and other finished products. (23)

(5) Furniture and fixtures. (25)

(6) Printing, publishing and allied industries. (27)

(7) Drugs. (283)

(8) Leather and leather products. (31)

(9) Glass: (a) Flat glass. (321) (b) Glass and glassware - pressed or blown. (322) (c) Glass products - made of purchased glass. (323)

(10) Fabricated metal prod. - except machinery and transport. equip.:

(a) Metal cans and shipping containers. (341)

(b) Cutlery, hand tools and general hardware. (342)

(c) Heating equipment, except electric and warm air, and plumbing fixtures. (343)

(d) Fabricated structural metal products. (344)

(e) Coating, engraving and allied services. (347)

(f) Miscellaneous fabricated metal products:

(1) Wire products. (3495)

(2) Misc. fabricated wire products. (3496)

(3) Metal foil and leaf. (3497)

(4) Fabricated metal products - NEC. (3499)

(11) Industrial/commercial machinery and computer equipment:

(a) Metalworking machinery and equipment. (354)

(b) Special industry machinery, except metalworking machinery. (355)

(c) General industrial machinery and equipment. (356)

(d) Computers and office equipment. (357)

Electronic and other electrical equipment and components, except computer equipment:

(a) Household appliances. (363)

(b) Electric lighting and wiring equipment. (364)

(c) Household audio and video equipment. (365)

(d) Communications equipment. (366)

(e) Electronic components and accessories. (367)

(f) Misc. electrical machinery equipment and supplies. (369)

(13) Measuring, analyzing and controlling instruments. (38)

(14) Photographic, medical and optical goods. (38)

(15) Watches and clocks. (38)

(16) Misc. manufacturing industries:

(a) jewelry, silverware, and plated ware. (391)

(b) Musical instruments and parts. (393)

(c) Dolls, toys, games and sporting goods. (394)

(d) Pens, pencils, and other office and artists' materials. (395)

(e) Costume jewelry, costume novelties, and notions. (396)

(f) Brooms and brushes. (3991)

(g) Signs and advertising displays. (3993)

(h) Morticians goods. (3995)

(i) Manufacturing industries, NEC. (3999)

(17) Plastic products - fabrication, molding, cutting, extrusion, and injection processing. (308)

I Marinas. (4493)

j. Millwork and structural wood members. (243)

k. Motion pictures. (78)

l. Motor freight transportation and warehousing. (42)

m. Repair services:

(1) Automotive and automotive parking. (75)

(2) Electrical. (762)

(3) Watch, clock and jewelry repair. (763)

(4) Reupholster and furniture repair. (764)

Misc. repairs and services. (769)

n. Retail trade:

(1) Lumber and other building materials. (521)

(2) Paint, glass and wallpaper. (523)

(3) Hardware. (525)

(4) Nurseries, lawn and garden supplies. (526)

(5) Mobile home dealers. (527)

(6) Automotive/boat/RV/motorcycle dealers. (55)

(7) Gasoline service. (55)

Furniture and furnishings. (57)

o. Research, development, and testing services. (873)

p. Ship, boat building and repairing - less than forty-five (45) feet. (373)

q. Sorting, grading and packaging services - citrus/vegetables. (0723)

r. Vocational schools. (824)

s. Wholesale trade - durable goods:

(1) Motor vehicle and automotive equipment. (501)

(2) Furniture and home furnishings. (502)

(3) Lumber and other building materials. (503)

(4) Professional and commercial equipment/supplies. (504)

(5) Metals and minerals except petroleum. (505)

(6) Electrical goods. (506)

(7) Hardware, plumbing and heating equipment, and supplies. (507)

(8) Machinery, equipment, and supplies. (508)

**Jeremiah Baron**  
& CO.

Commercial Real Estate, LLC

## Listing Contact:

Janine Landolina | 772-285-2599 | ileaseit@gmail.com

Office: 49 SW Flagler Ave. Suite 301 Stuart FL, 34994 | 772-286-5744

# Zoning Information

# Showroom/Office/Warehouse

4303 SW High Meadows Ave Palm City FL 34990

(9) Misc. durable goods:

- (a) Sporting and recreational goods. (5091)
- (b) Toys and hobby goods. (5092)
- (c) Jewelry, watches, precious stones and metals. (5094)
- (d) Durable goods NEC. (5099)

t. Wholesale trade - nondurable goods:

- (1) Paper and paper products. (511)
- (2) Drugs. (512)
- (3) Dry goods and apparel. (513)
- (4) Groceries and related products. (514)
- (5) Farm products - raw materials. (515)
- (6) Chemicals, and allied products. (516)
- (7) Beer, wine, and distilled alcoholic beverages. (518)
- (8) Misc. nondurable goods:

- (a) Farm supplies. (5191)
- (b) Books, periodicals and newspapers. (5192)
- (c) Flowers, nursery stock and florists' supplies. (5193)
- (d) Tobacco/tobacco products. (5194)
- (e) Paints, varnishes and supplies. (5198)
- (f) Nondurable goods, NEC. (5199)

u. Mobile food vendors. (999)

v. Single-family detached dwelling units provided that the single-family dwelling unit is located on an existing lot or parcel or record, as further defined in this Code, that was existing on or before August 1, 1990. (999)

w. Kennels. Allowed as a permitted use only when the property is surrounded by industrial uses or zoning and is five hundred (500) feet or more from residential uses or zoning. All distance requirements shall be measured from the nearest point of the existing home or area of single-family zoning to the nearest point of the proposed kennel.

x. Landscape and horticultural services. (078)

y. Personal services. (72)

3. Lot Size Requirements. Lot size requirements shall be in accordance with Section 7.04.00.

4. Dimensional Regulations. Dimensional requirements shall be in accordance with Section 7.04.00.

5. Off-street Parking and Loading Requirements. Off-street parking and loading requirements are subject to Section 7.06.00.

6. Landscaping Requirements. Landscaping requirements are subject to Section 7.09.00.

7. Conditional Uses:

a. Airports, landing and takeoff fields - general aviation. (4581)

b. Manufacturing:

(1) Cut stone and stone products. (328)

(2) Motorcycles, bicycles, and parts. (375)

(3) Wood containers, wood buildings and mobile homes. (244/245)

c. Ship, boat building and repairing (excluding ship or boat salvaging) - forty-five (45) to one hundred fifty (150) feet. (373)

d. Wholesale:

(1) Petroleum bulk stations and terminals.

e. Scrap and waste materials - subject to the provisions of Section 7.10.12.A.

f. Kennels. (0752) Other than those permitted under Section 3.01.03 T.2.w. of the Land Development Code.

8. Accessory Uses. Accessory uses are subject to the requirements of Section 8.00.00 and include the following:

a. Co-generation facilities. (999)

b. Fueling facilities. (999)

c. Industrial wastewater disposal. (999)

d. One detached single-family dwelling or mobile home for on-site security purposes per property. (999)

e. Retail trade accessory to the primary manufacturing or wholesaling use. (999)

f. Solar energy systems, subject to the requirements of Section 7.10.28.

**Jeremiah Baron**  
& CO.

Commercial Real Estate, LLC

**Listing Contact:**

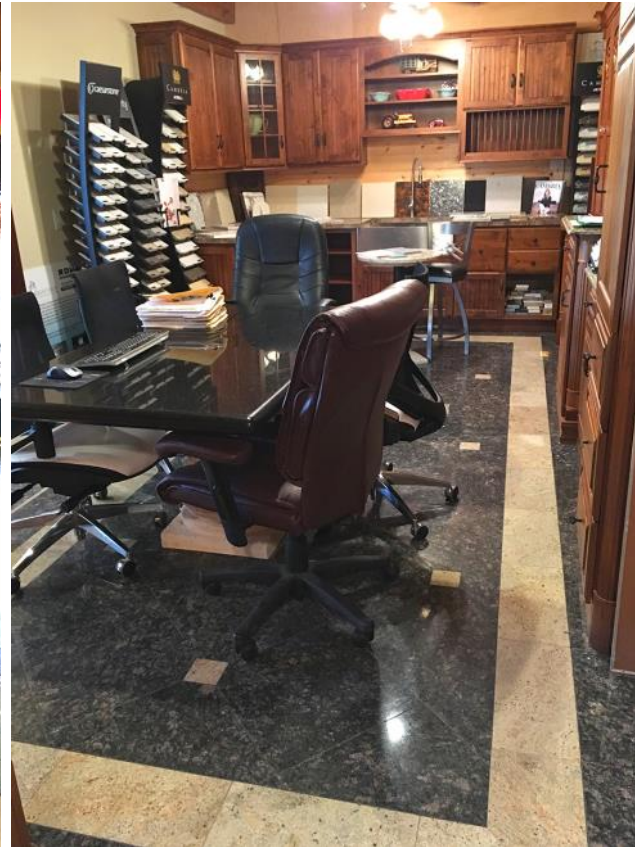
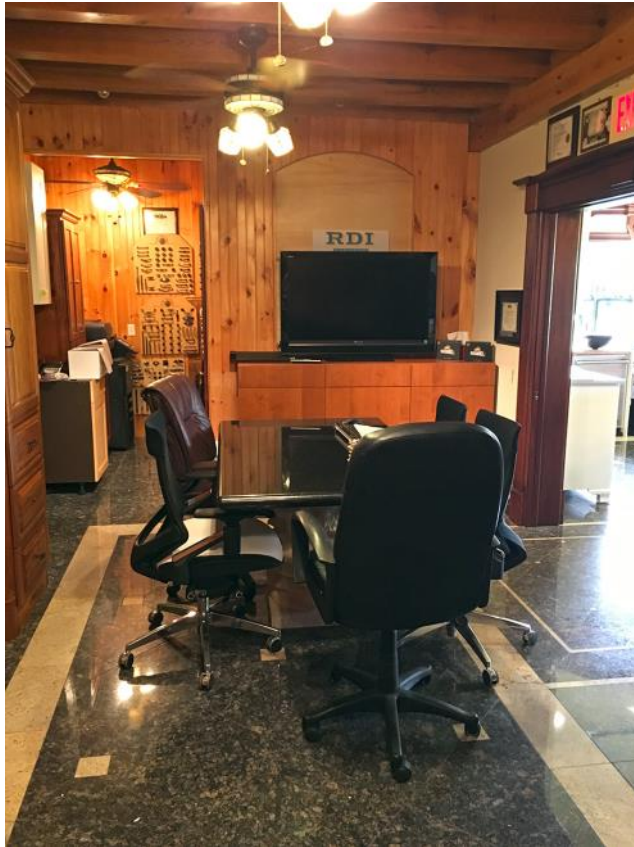
Janine Landolina | 772-285-2599 | ileaseit@gmail.com

Office: 49 SW Flagler Ave. Suite 301 Stuart FL, 34994 | 772-286-5744

## Additional Photos

# Showroom/Office/Warehouse

4303 SW High Meadows Ave Palm City FL 34990



**Jeremiah Baron**  
& CO.

Commercial Real Estate, LLC

**Listing Contact:**

Janine Landolina | 772-285-2599 | ileaseit@gmail.com

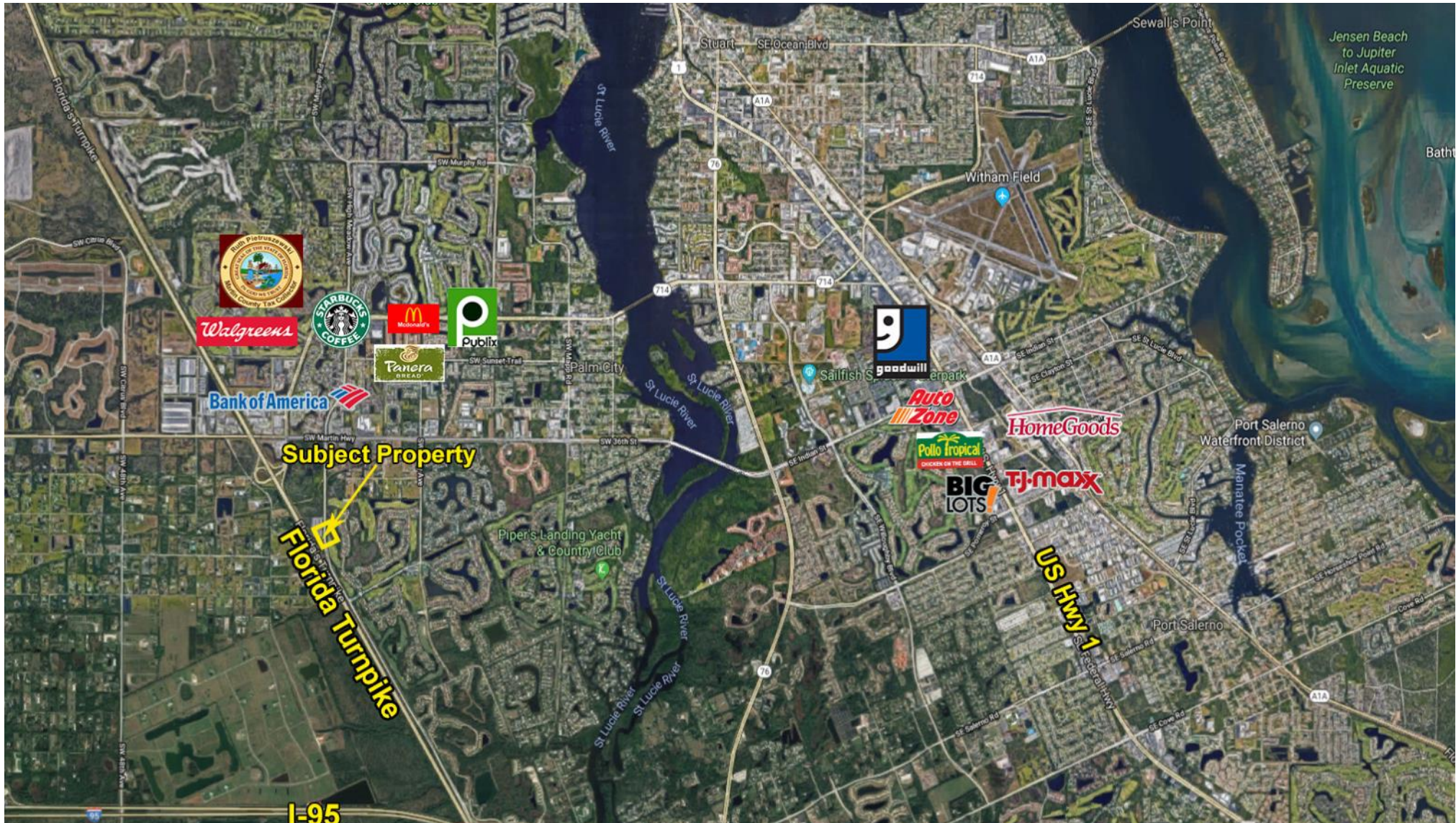
Office: 49 SW Flagler Ave. Suite 301 Stuart FL, 34994 | 772-286-5744



# Property Aerial

# Showroom/Office/Warehouse

4303 SW High Meadows Ave Palm City FL 34990



**Jeremiah Baron**  
& CO.

Commercial Real Estate, LLC

**Listing Contact:**

Janine Landolina | 772-285-2599 | ileaseit@gmail.com

Office: 49 SW Flagler Ave. Suite 301 Stuart FL, 34994 | 772-286-5744