



FOR LEASE
220 North Main Street
Greenville, South Carolina

±1,791 to ±18,008 Contiguous Class A Office Space Available



ELEVATING THE EXPERIENCE
WORK, PLAY, ENTERTAIN

For more information, contact:



LAURA HARMON
Senior Associate
864 704 1363
laura.harmon@thalhimer.com

KYLE BERDUGO
Associate
864 704 1366
kyle.berdugo@thalhimer.com

DAWN REDMOND
Vice President, Property Services
864 704 1341
dawn.redmond@thalhimer.com

Wells Fargo Center
15 South Main Street, Suite 502
Greenville, SC 29601
www.thalhimer.com

Amenities



Hyatt Regency Greenville
A perfect balance of Southern hospitality and modern luxuries.

- On-Site Catering Available
- Valet Parking Available
(for office tenants and visitors)



Convenient Parking
*Commons Garage
Laurens St. Garage
Richardson St. Garage
and street parking*



Studio 220
meeting / conference / event space



NOMA Square Starbucks
Enjoy a cup of your favorite coffee.



Oil & Vinegar
Offering a variety of imported goodies.



Roost Restaurant
Offering a farm-to-table concept.



Kilwins Chocolate, Fudge and Ice Cream
Offering cool, delicious treats.



ORB Lounge
Offers a chic hangout in NOMA square.

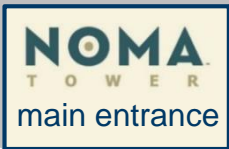


ELEVATING THE EXPERIENCE
WORK, PLAY, ENTERTAIN

Beattie Place



Commons Garage



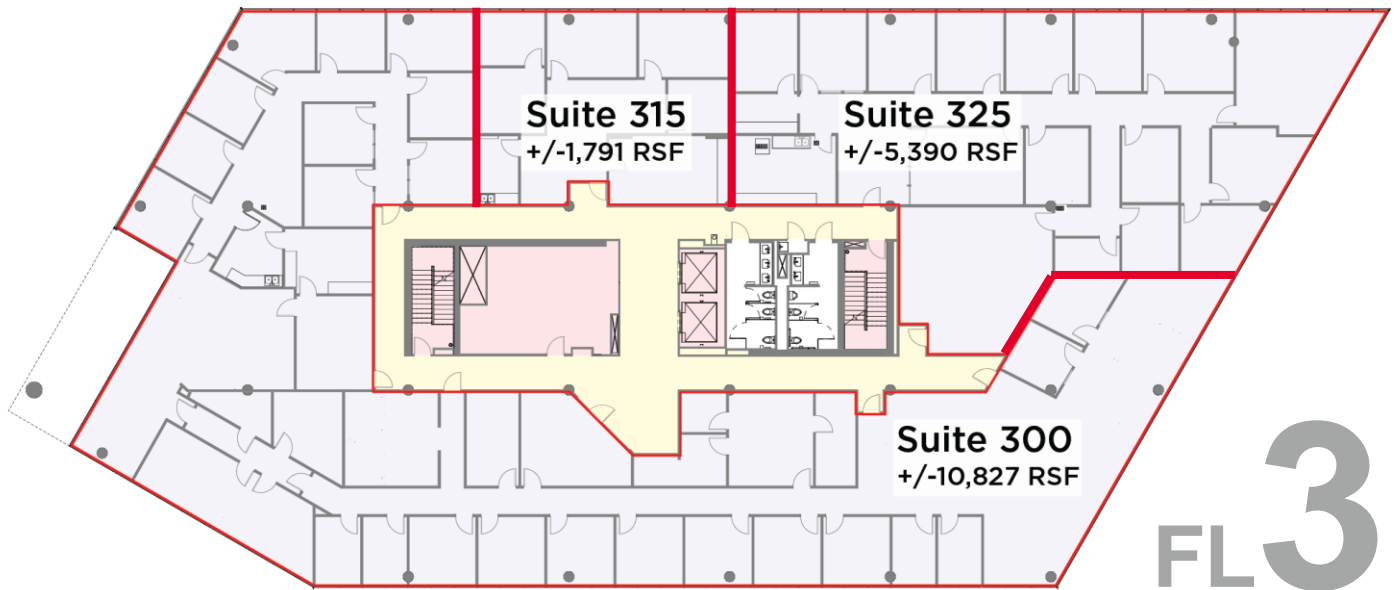
North Main Street

PROPERTY HIGHLIGHTS:

- Rate: \$23.50 FS
- ±1,791 - ±18,008 SF Available

Leasing Opportunities

- Suite 300 | ±10,827 SF
- Suite 315 | ±1,791 SF
- Suite 325 | ±5,390 SF



FL 3



Available



Common Area



Bathrooms



Vertical Space



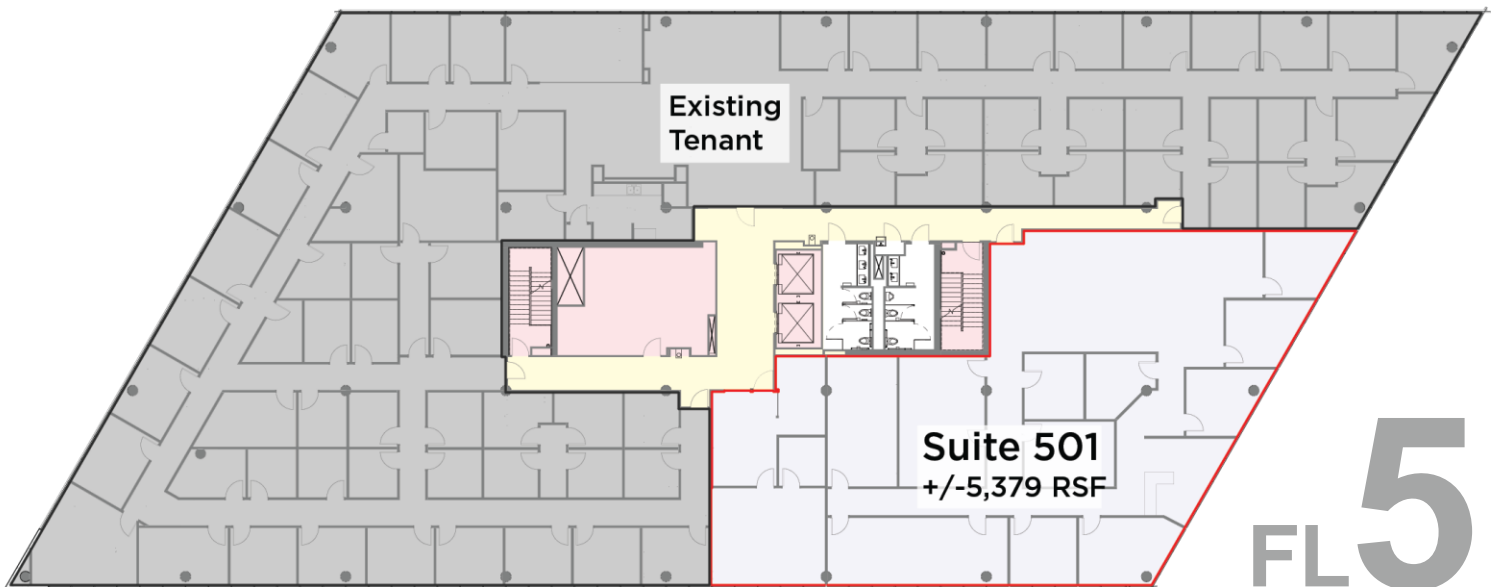
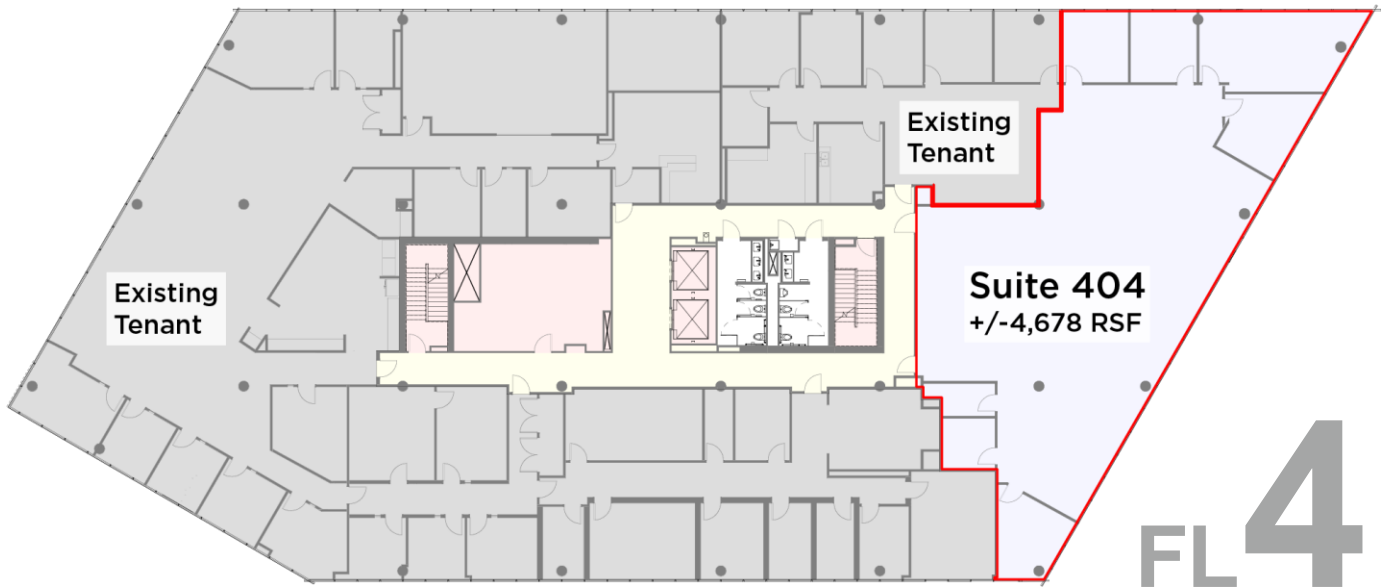
Existing Tenant

ELEVATING THE EXPERIENCE
WORK, PLAY, ENTERTAIN

Leasing Opportunities

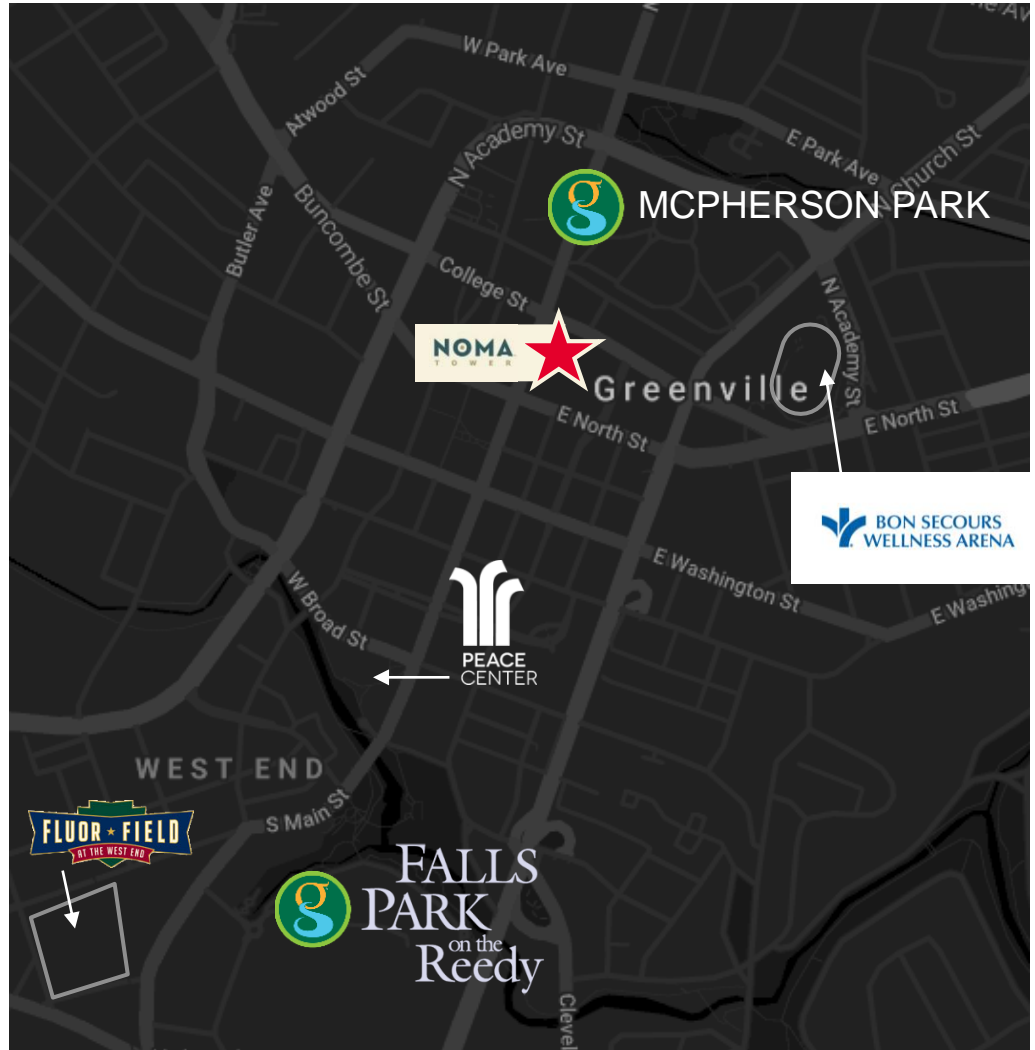
• Suite 404 | $\pm 4,678$ SF

• Suite 501 | $\pm 5,379$ SF



NOMA TOWER

(short for NOrth MAin) is located on a cornerstone of downtown Greenville, SC, recently voted one of Forbes Best Downtowns in America for its unique retailers, restaurants, beautiful art galleries and exciting festivals.



WHY GREENVILLE?

Top 10 Best Downtowns in America — *Forbes*

Ranked 3rd Strongest Job Market in America — *Bloomberg*

Ranked as one of the Best Cities for Young Adults — *Forbes*

52 Places to Go (In the World) in 2017 — *The New York Times*

The 10 Best Emerging Destinations — *USA Today*

America's 2nd Best Town Ever — *Outside Magazine*

Ranked 9th Fastest Growing City in the Nation — *CNN Money*



ELEVATING THE EXPERIENCE WORK, PLAY, ENTERTAIN

NOMA SQUARE “The Place to Be!”



Leash up your pup for dog-friendly yappy hour complete with live music

Regularly scheduled yoga and fitness events



Beginning mid-March and running through the fall, the City of Greenville's concerts series



ABOUT GREENVILLE

Nestled up against the foothills of the Blue Ridge Mountains in the heart of South Carolina's Upcountry, you'll find Greenville situated just about halfway between Charlotte, North Carolina and Atlanta, Georgia. Greenville's friendly, thriving downtown pulses with things to do year-round. From one-of-a-kind shops, boutiques and art galleries to museums, tours and outdoor activities. Greenville is a welcome retreat for visitors of every age and explorers of every type.

NOMA TOWER

is located in the heart of Greenville's vibrant downtown. Points of Interest include The Bon Secours Wellness Arena, McPherson Park, The Peace Center, Falls Park on the Reedy, and Fluor Field just to name a few. From March-September the City of Greenville hosts weekly concerts, Downtown Alive, and Main Street Fridays.

FOR MORE INFORMATION, CONTACT:

LAURA HARMON

Senior Associate
15 South Main Street, Suite 502
Greenville, SC 29601
864 704 1363
laura.harmon@thalhimer.com

KYLE BERDUGO

Associate
15 South Main Street, Suite 502
Greenville, SC 29601
864 704 1366
kyle.berdugo@thalhimer.com