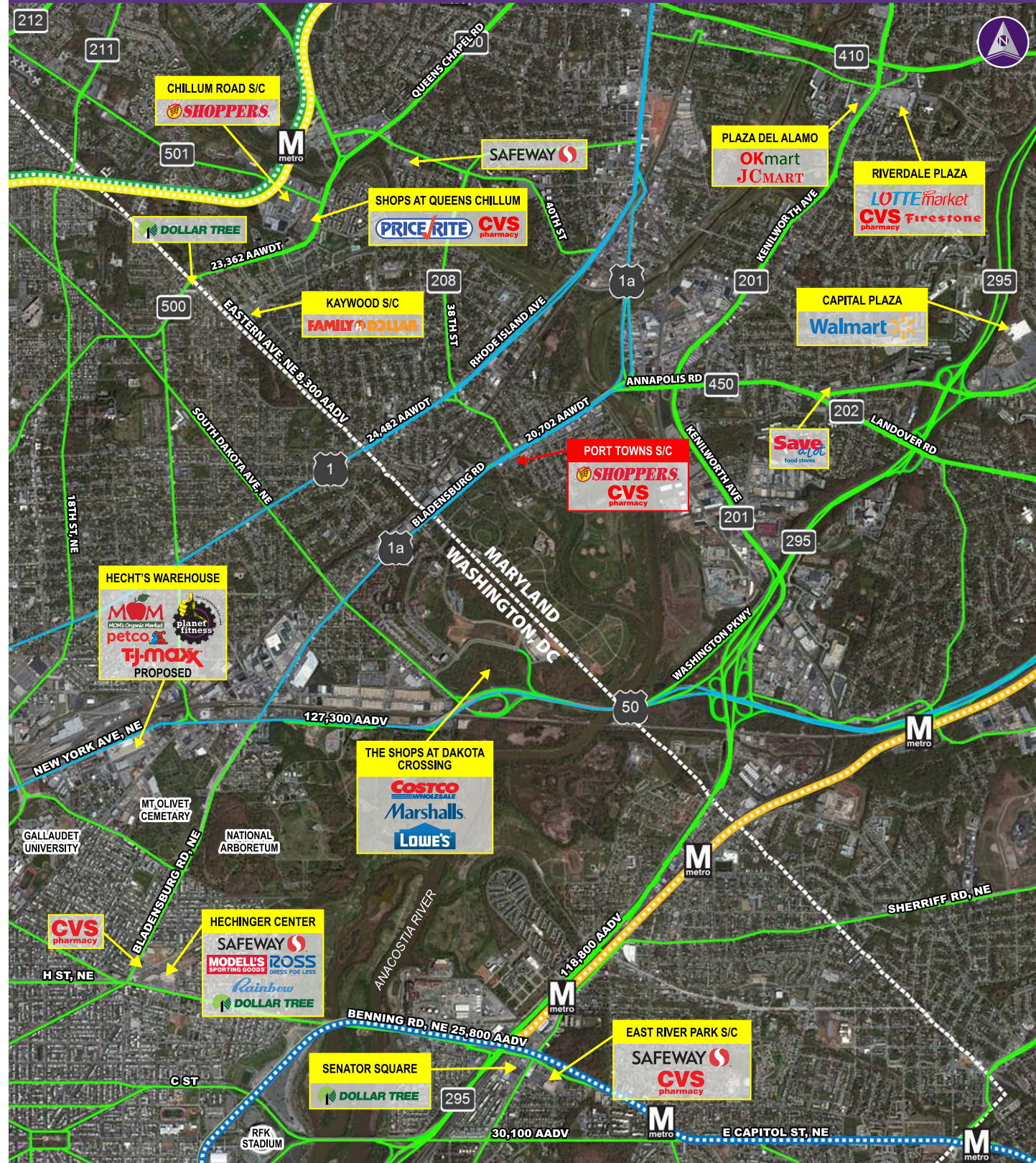


# PORT TOWNS SHOPPING CENTER ■ BRENTWOOD, MD

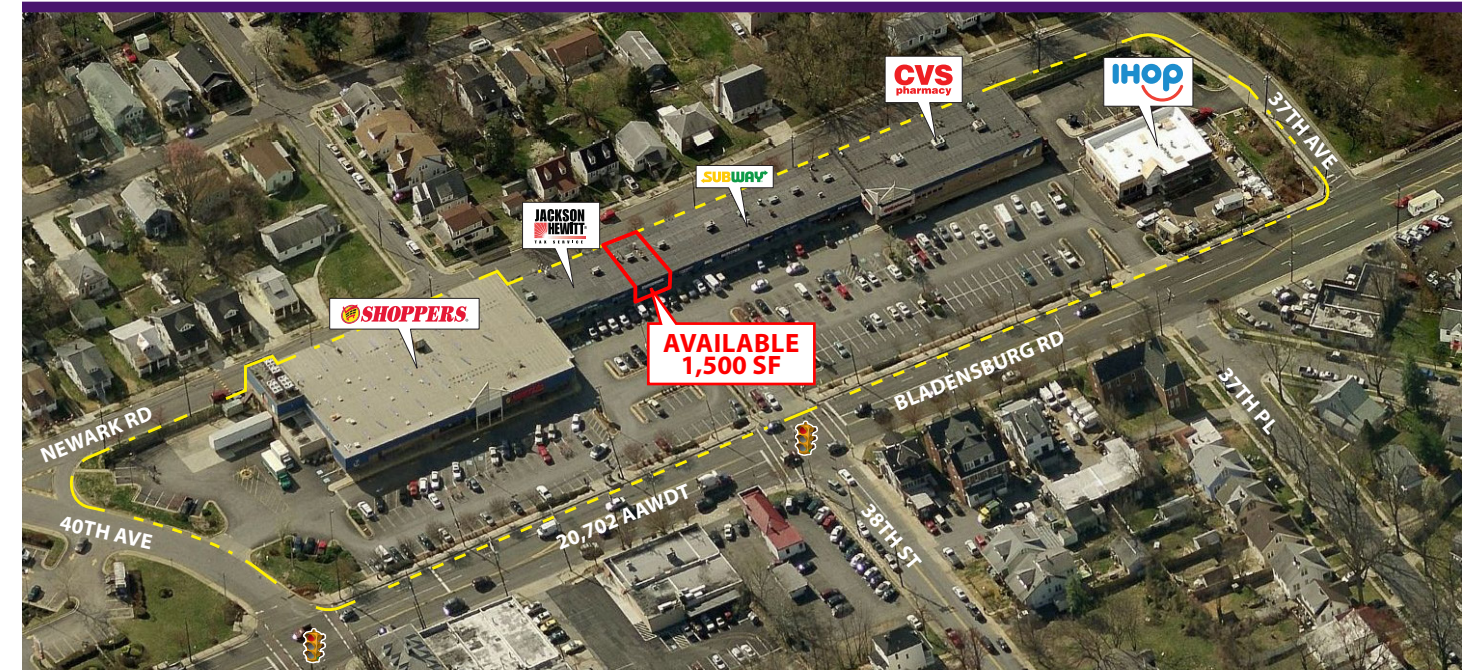


Information herein has been obtained from sources believed to be reliable. While we do not doubt its accuracy, we have not verified it and make no guarantee, warranty or representation about it. Independent confirmation of its accuracy and completeness is your responsibility. H&R Retail, Inc.

# Port Towns Shopping Center

3671 BLADENSBURG RD | BRENTWOOD, MARYLAND 20722

**1,500 SF Space Available - First vacancy since 1999!!**



## Property Highlights

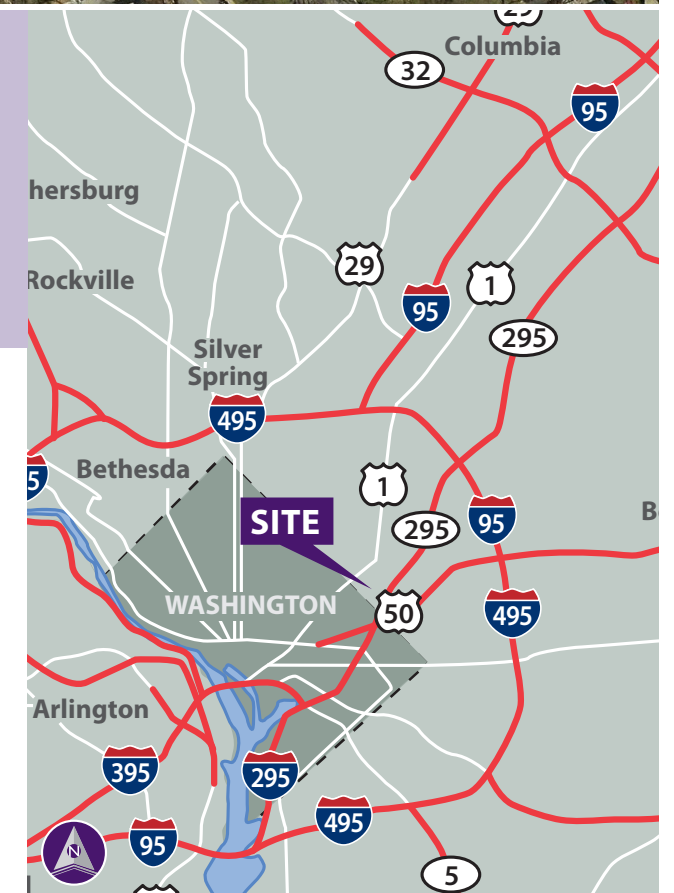
- Rare opportunity in Brentwood, Maryland
- Over 191,000 people in 3 miles
- 78,332 daytime population in 3 miles
- Incredible visibility to Bladensburg Road with 20,702 AAWDT

## Demographics (2015 Estimated)

	1 Mile	3 Mile	5 Mile
Population	14,155	191,428	697,009
Average HH Income	\$71,141	\$66,044	\$82,397
Daytime Population	6,022	78,332	468,467

## Please Contact

**Lawrence B. Hoffman**    **Scott N. Yurow**  
 240.482.3610 (direct)    410.215.5311 (cell)  
 301.656.6222 (fax)    410.486.2733 (fax)  
 lhoffman@hrretail.com    syurow@hrretail.com



**PORT TOWNS SHOPPING CENTER ■ BRENTWOOD, MD**

