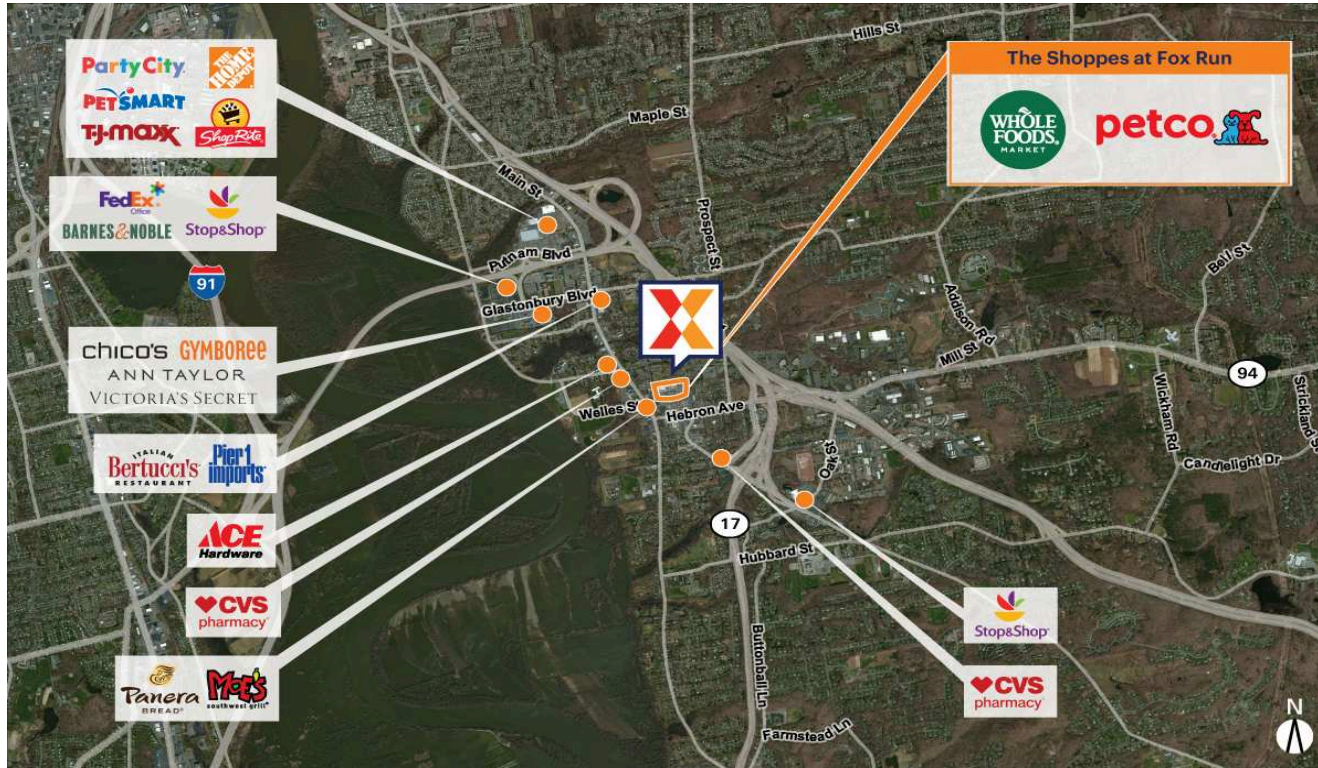


The Shoppes at Fox Run

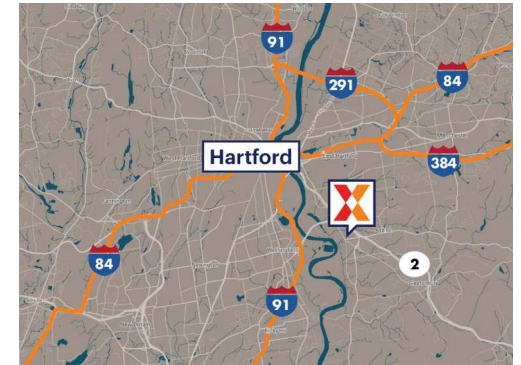
Hartford-East Hartford-Middletown, CT

41.7147, -72.6068

55 Welles Street | Glastonbury, CT 06033



Center Size: 108,075 SF



Demographics	1 Mile	3 Mile	5 Mile
	6,252	40,997	162,340
	2,908	17,048	63,286
	\$94,079	\$104,388	\$86,714

Retail center anchored by a top performing Whole Foods Market that draws an average of 23,000+ customers/week

Commercial location surrounded by an affluent population with an average household income of \$104,000+ within 3 miles

Benefits from a strong daytime population in the surrounding Class A office complexes

Restaurant space available for lease

The Shoppes at Fox Run

Hartford-East Hartford-Middletown, CT

41.7147, -72.6068

55 Welles Street | Glastonbury, CT 06033



Available Space

12	1,381 SF
211	3,880 SF
212	700 SF
213	1,936 SF
214	912 SF
218	1,669 SF

Current Retailers

OUTLOT1	People's United Bank	3,254 SF
01	Whole Foods Market	46,400 SF
02	Natural Nails & Spa	1,800 SF
03	Bangkok Spice	2,300 SF
04	C2 Educational Center	2,200 SF
04A	Sartorius Sports	2,200 SF
05	Fitness Together	1,500 SF
06	State Farm	1,400 SF
07	Supercuts	1,500 SF
08	Foxy Pizza	1,500 SF
09	Club Pilates	2,000 SF
10	Eyeglass Place Of Glastonbury	2,000 SF
11	GNC	2,000 SF
13	Orangetheory Fitness	2,839 SF
14	Petco	10,842 SF
15	Mattress Firm	6,470 SF
200	Target Temps, Inc.	860 SF
202	Fox Run Psychiatric Associate	625 SF
203	Kooma Massage Therapy	350 SF
204	JK Private Wealth	850 SF
206	A Better Image	360 SF
207	Swan Integrative Health & Wellness	1,062 SF
210	Don't Weight, LLC	700 SF
216	Angela Capiello, MD	850 SF
217	Korzep Insurance	1,237 SF

1388