



CONTINENTAL
— PLAZA —

Continental Plaza is one of the most recognized and accessible Class A office complexes in Northern New Jersey. The complex has been **extensively renovated** with **new on-site amenities** and was acquired by **new ownership in 2019.**

continentalplaza.com

CBRE

433 HACKENSACK

12th | 6,842 sq. ft.

full floor → 7th | 22,458 sq. ft.

5th | 6,168 sq. ft.

full floor → 3rd | 22,458 sq. ft.

TOTAL 291,877 sq. ft.

411 HACKENSACK

100% occupied

TOTAL 188,533 sq. ft.

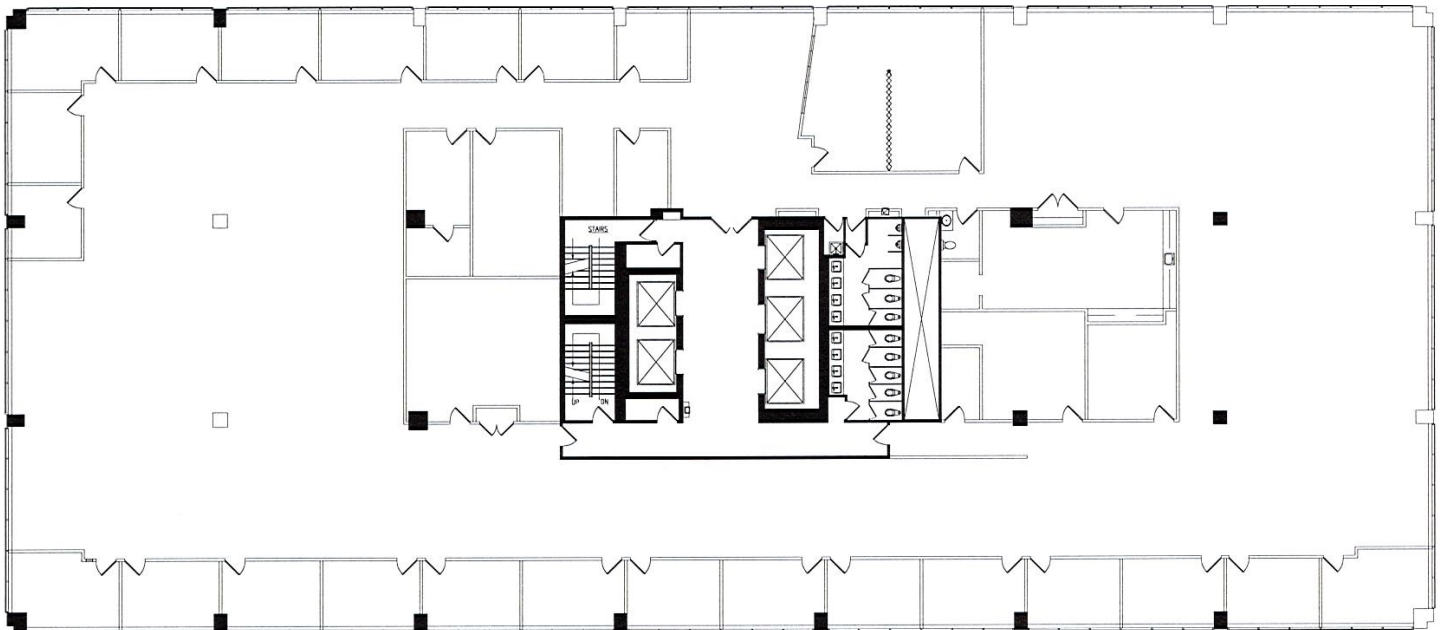
401 HACKENSACK

6th | 6,311 sq. ft.

TOTAL 167,537 sq. ft.



TYPICAL FLOOR



CONTINENTAL PLAZA

CBRE



ADDITIONAL ON-SITE AMENITIES:

- 82-Seat Town Hall
- 18-Seat Boardroom
- 4 Huddle Rooms
- Dry Cleaning
- Covered Parking

- Massage Therapist
- Shoe Shine
- Campus-Wide Wi-Fi
- 24-Hour Security
- On-site Management



RENOVATIONS COMPLETE

The property was extensively renovated in 2018 and 2019 including a new fitness center, cafeteria and coffee bar, conference center and renovated lobbies.



CONTINENTAL PLAZA OFFERS PERSONAL TRAINING SESSIONS:

- Cycling
- Yoga
- Kick Boxing
- Self-Defense





HACKENSACK COMMONS

THE SHOPS AT RIVERSIDE



CONTINENTAL PLAZA

4

2.5 MILES



to Route 17 and the Garden State Parkway

10 MINUTES



to Manhattan via the George Washington Bridge

DONALD SPERLING

Senior Vice President

+1 201 712 5686

donald.sperling@cbre.com

ERIN WENZLER

Senior Associate

+1 201 712 5893

erin.wenzler@cbre.com

continentalplaza.com

CONTINENTAL PLAZA

CBRE

© 2020 CBRE, Inc. All rights reserved. This information has been obtained from sources believed reliable, but has not been verified for accuracy or completeness. You should conduct a careful, independent investigation of the property and verify all information. Any reliance on this information is solely at your own risk. CBRE and the CBRE logo are service marks of CBRE, Inc. All other marks displayed on this document are the property of their respective owners, and the use of such logos does not imply any affiliation with or endorsement of CBRE.