

LAND FOR SALE

6.23 Acres

PROPERTY FEATURES

- Highly visible, high-traffic infill site available for commercial development
- 6.23 ac total available; divisible
- 416' Bardstown Road frontage
- 200' Fegenbush Lane frontage
- Traffic counts of 33,800 ADT along Bardstown Road and 15,800 ADT along Fegenbush Lane
- All utilities available
- Zoned R-4

DEMOGRAPHICS	POPULATION	AVERAGE HOUSEHOLD INCOME
1 MILE RADIUS	12,784	\$70,256
3 MILE RADIUS	104,228	\$74,866
5 MILE RADIUS	245,853	\$82,668



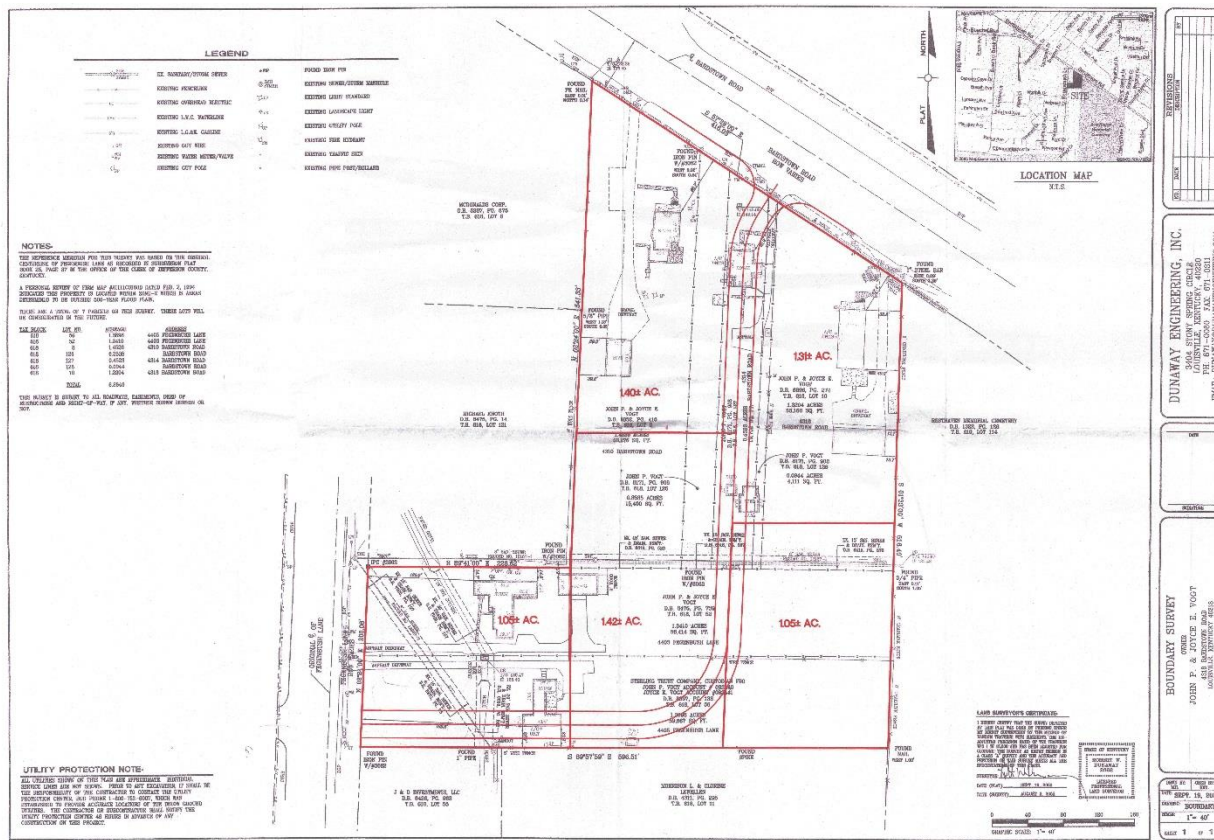
COMMERCIAL DEVELOPMENT OPPORTUNITY

For more information, please contact:

BRENT DOLEN, CCIM
Senior Associate
502 589 5150 ext. 262
bdolen@commercialkentucky.com

333 E. Main Street, Suite 510
Louisville, KY 40202
phone: +1 502 589 5150
www.CommercialKentucky.com

FOR SALE
4310 BARDSTOWN ROAD
Louisville, KY 40218



Site Plan

For more information, please contact:

BRENT DOLEN, CCIM
Senior Associate
502 589 5150 ext. 262
bdolen@commercialkentucky.com

333 E. Main Street, Suite 510
Louisville, KY 40202
phone: +1 502 589 5150
www.CommercialKentucky.com