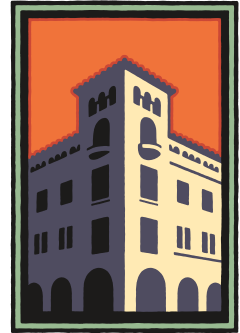


FOR LEASE

---

1040 Brewster Ave, Redwood City, CA



**PREMIER  
PROPERTIES**  
COMMERCIAL  
REAL ESTATE



## REDWOOD CITY OFFICE WITH PARKING

High Visibility Building Near Downtown

Suite B: ±626 SQ. FT. - Available Immediately

**BRAD EHIKIAN**  
Partner

---

Phone: 650.618.3001  
brad.ehikian@prprop.com  
dre license #01736391

**JON GOLDMAN**  
Partner

---

Phone: 650.618.3003  
jon.goldman@prprop.com  
dre license #01295503

**JESSE EBNER**  
Associate

---

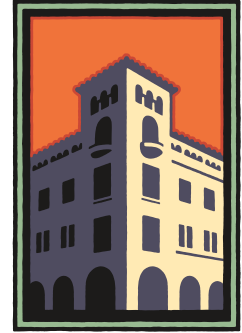
Phone: 650.618.3017  
jesse.ebner@prprop.com  
dre license #02055989

FOR PROPERTY DETAILS AND MORE LISTINGS

[PremierPaloAlto.com](http://PremierPaloAlto.com)

# FOR LEASE

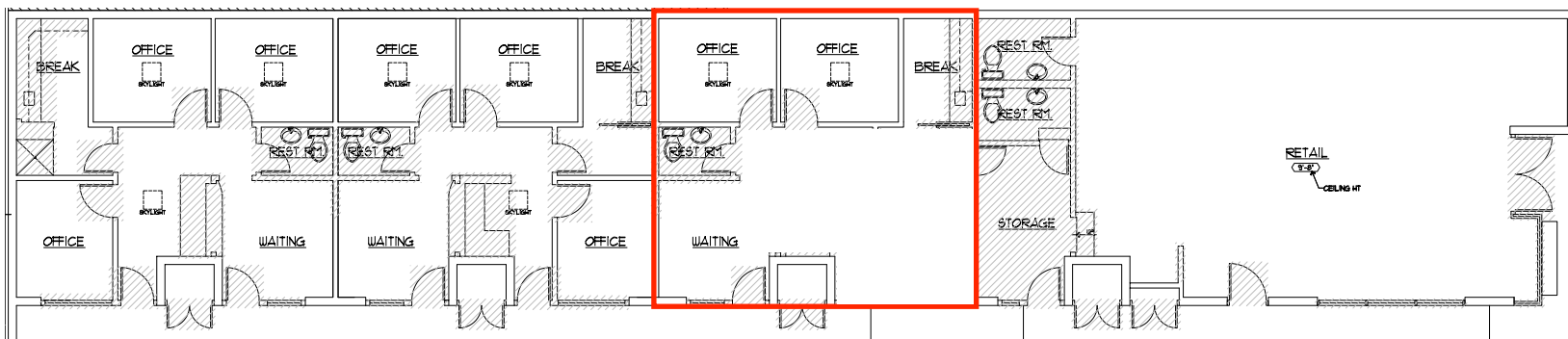
1040 Brewster Ave, Redwood City, CA



**PREMIER  
PROPERTIES**  
COMMERCIAL  
REAL ESTATE

## PROPERTY DESCRIPTION

- Two Private Offices
- Updated In-Suite Restroom
- Abundant On-Site Parking
- Kitchenette
- Walking Distance to Caltrain & Downtown Redwood City Amenities
- Available Immediately



FLOOR PLAN MAY NOT BE ACCURATE / TO SCALE

Neither the property owner nor Premier Property Management make any representation or warranty with regard to the information contained within this advertising flyer and the information contained herein should not be relied upon for validity, accuracy, or completeness. Prior to submitting an offer, prospective purchasers or tenants should perform their own due diligence including consultation with their legal and tax counsel in order to arrive at an independent evaluation of the property.

**BRAD EHIKIAN**  
Partner

Phone: 650.618.3001  
brad.ehikian@prprop.com  
dre license #01736391

**JON GOLDMAN**  
Partner

Phone: 650.618.3003  
jon.goldman@prprop.com  
dre license #01295503

**JESSE EBNER**  
Associate

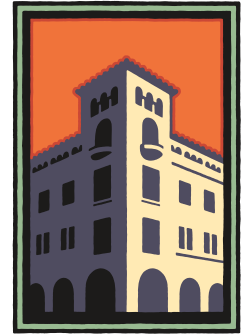
Phone: 650.618.3017  
jesse.ebner@prprop.com  
dre license #02055989

FOR PROPERTY DETAILS AND MORE LISTINGS

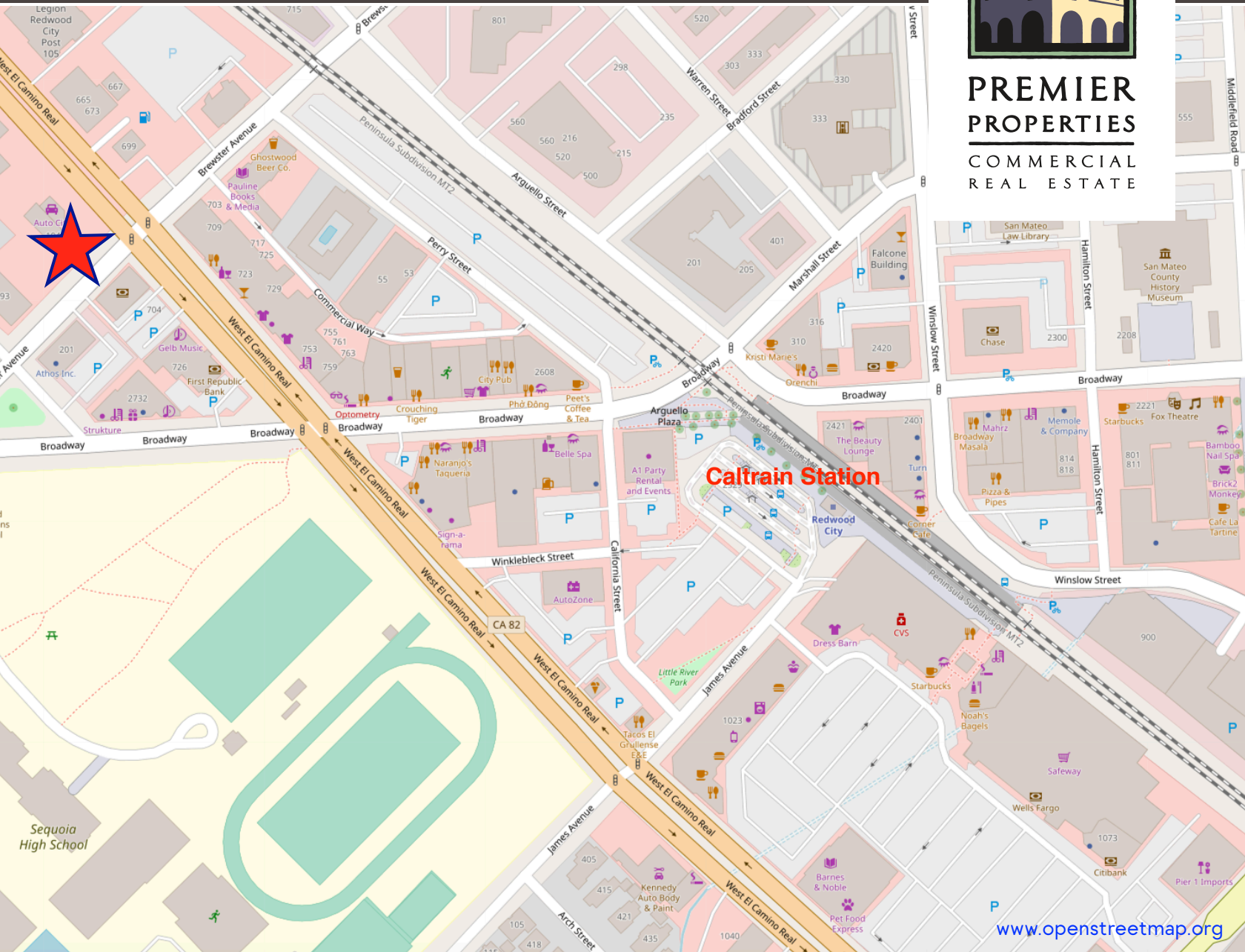
[PremierPaloAlto.com](http://PremierPaloAlto.com)

FOR LEASE

1040 Brewster Ave, Redwood City, CA



**PREMIER  
PROPERTIES**  
COMMERCIAL  
REAL ESTATE



**BRAD EHIKIAN**  
Partner

Phone: 650.618.3001  
brad.ehikian@prprop.com  
dre license #01736391

**JON GOLDMAN**  
Partner

Phone: 650.618.3003  
jon.goldman@prprop.com  
dre license #01295503

**JESSE EBNER**  
Associate

Phone: 650.618.3017  
jesse.ebner@prprop.com  
dre license #02055989

FOR PROPERTY DETAILS AND MORE LISTINGS

[PremierPaloAlto.com](http://PremierPaloAlto.com)