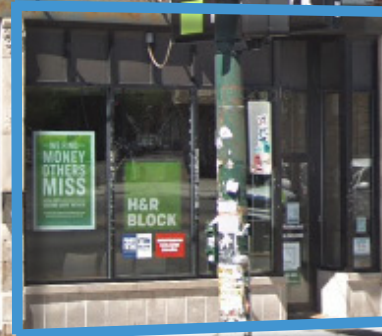


# 2906 W. FULLERTON AVENUE

NORTHEAST CORNER OF  
MILWAUKEE & FULLERTON  
LOGAN SQUARE, CHICAGO

PRIME RETAIL  
SPACE AVAILABLE



PRIME SPACE AVAILABLE

# 2906 W. FULLERTON AVENUE

Northeast Corner of Milwaukee & Fullerton | Logan Square, Chicago, IL



## SPACE AVAILABLE

1,214 SF

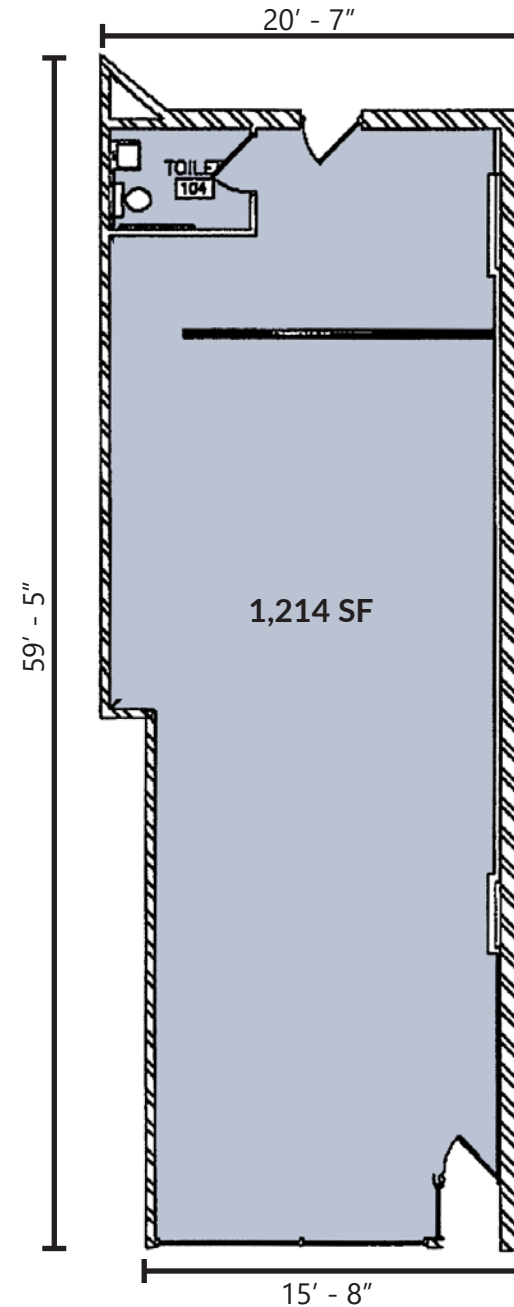
## SITE SUMMARY

- Small space in the heart of Logan Square.
- Walking distance to public transportation including the Blue Line (1.3M annual riders) and several bus stops.
- Includes two (2) dedicated parking spaces.

## AREA TENANTS

Target (coming soon), Furious Spoon, Gaslight, Slippery Slope, Jam, The Owl, Marcello's, Lula Cafe and many more

<b>POPULATION DENSITY</b>	18,915	½ Mile
	76,556	1 Mile
	266,162	2 Mile
<b>AVERAGE HH INCOME</b>	\$74,681	½ Mile
	\$71,139	1 Mile
	\$84,510	2 Mile



Fullerton Avenue



PRIME SPACE AVAILABLE

# 2906 W. FULLERTON AVENUE

Northeast Corner of Milwaukee & Fullerton | Logan Square, Chicago, IL



## CONTACT

Matt Cavanagh  
 matt@arcgrp.com  
 (630) 908-5694

Cooper Annenberg  
 cooper@arcgrp.com  
 (630) 908-5697

© 2019 A-R-C Real Estate. All information is from sources believed reliable, not independently verified, and thus subject to errors, omissions, and modifications such as price, listing, square footage, rates and commissions. All information, estimates and projections subject to change, market assumptions, unknown facts and conditions, and future potentialities. A-R-C Real Estate makes no express or implied representations or warranties, as facts and results may vary materially from all information, estimates and projections. All renderings presented are conceptual.

**A-R-C**  
 REAL ESTATE