



**FOR SALE**  
**Prime Office Land | MetroWest**  
**1540 Park Center Dr., Orlando, FL 32835**

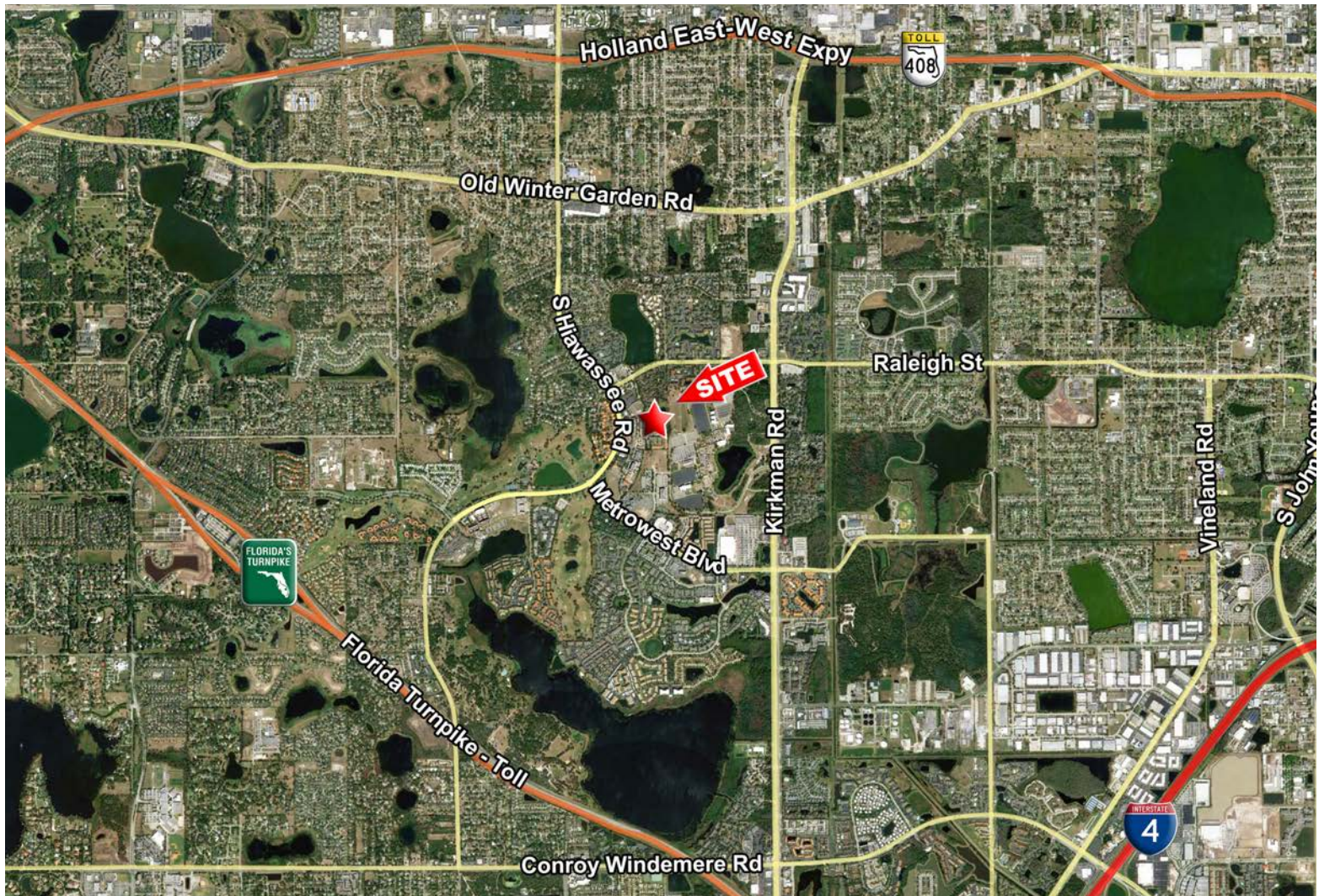


**Lee Zerivitz, CCIM**  
Managing Partner  
Office: 407.644.CITY (2489)  
Cell: 407.929.3598

[lee@citycommercial.com](mailto:lee@citycommercial.com)

**CITY COMMERCIAL**  
1071 W. Morse Boulevard  
Suite 101  
Winter Park, FL 32789

[www.CITYcommercial.com](http://www.CITYcommercial.com)



CITY Commercial is the agent of the Landlord or Seller of this property and will be paid by the Landlord or Seller. All information furnished with respect to the subject property has been obtained from sources deemed reliable. No representation as to accuracy thereof is made. This offering is subject to errors, omissions, prior sales or withdrawal without notice.

## Property Highlights

### Summary

- Total  $\pm$  1.95 acre pad site
- $\pm$  1.16 acres is 100% usable as site stormwater is adjacent to property
- Zoned O-2, City of Orlando
- Can accommodate up to  $\pm$  20K SF office building
- O-2 zoning allows medical & other professional uses
- Parcel ID: [36-22-28-5625-00-230](#)
- Surrounded by well established offices, hotels & restaurants
- Minutes from Valencia College West Campus and Universal Studios
- Convenient access via I-4, 408, Kirkman Road & Hiawassee Road

