

FOR LEASE

# 111 Union Avenue

East Rutherford, NJ

RETAIL

NEW DEVELOPMENT

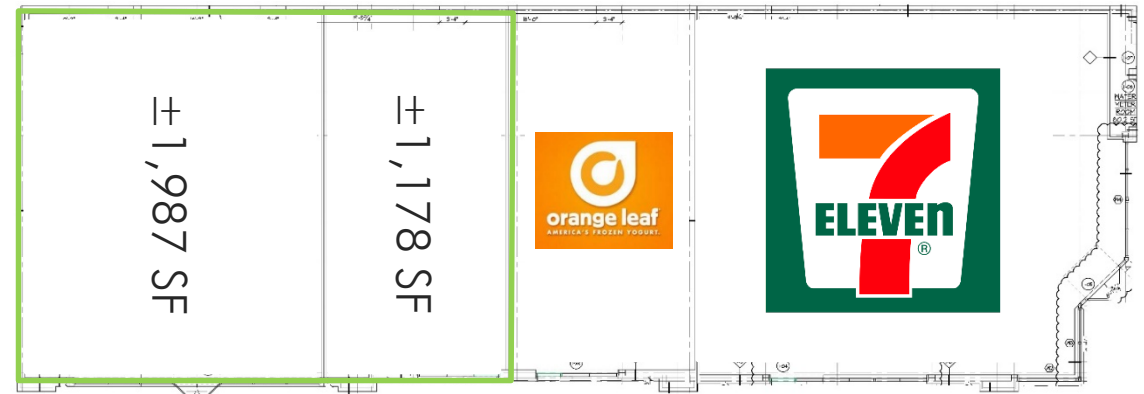


## PROPERTY INFO

### PRIME BERGEN COUNTY INTERSECTION JOIN INVESTORS BANK & 7-ELEVEN

7,100 sq. ft. strip center located at the busy intersection of Union and Hackensack Street in East Rutherford, NJ.

- + **Availability:** 3,165 sq. ft.
- + **Parking:** 59 on-site spaces
- + **Traffic Counts:** 24,312 AADT
- + **Area Retail:** Lowe's, BJ's, Staples, Starbucks, Chipotle, Panera, Marshalls, Dollar Tree, TD Bank, Chili's and Aldi
- + **NNN:** \$10.00 per sq. ft. (estimated)
- + **Lease Rate:** Call for quote



## CONTACT US

### SAMUEL BERNHAUT

First Vice President  
+1 201 712 5884  
samuel.bernhaut@cbre.com

### NICOLE NANNOLA

Associate  
+1 201 712 5821  
nicole.nannola@cbre.com

[www.cbre.us](http://www.cbre.us)

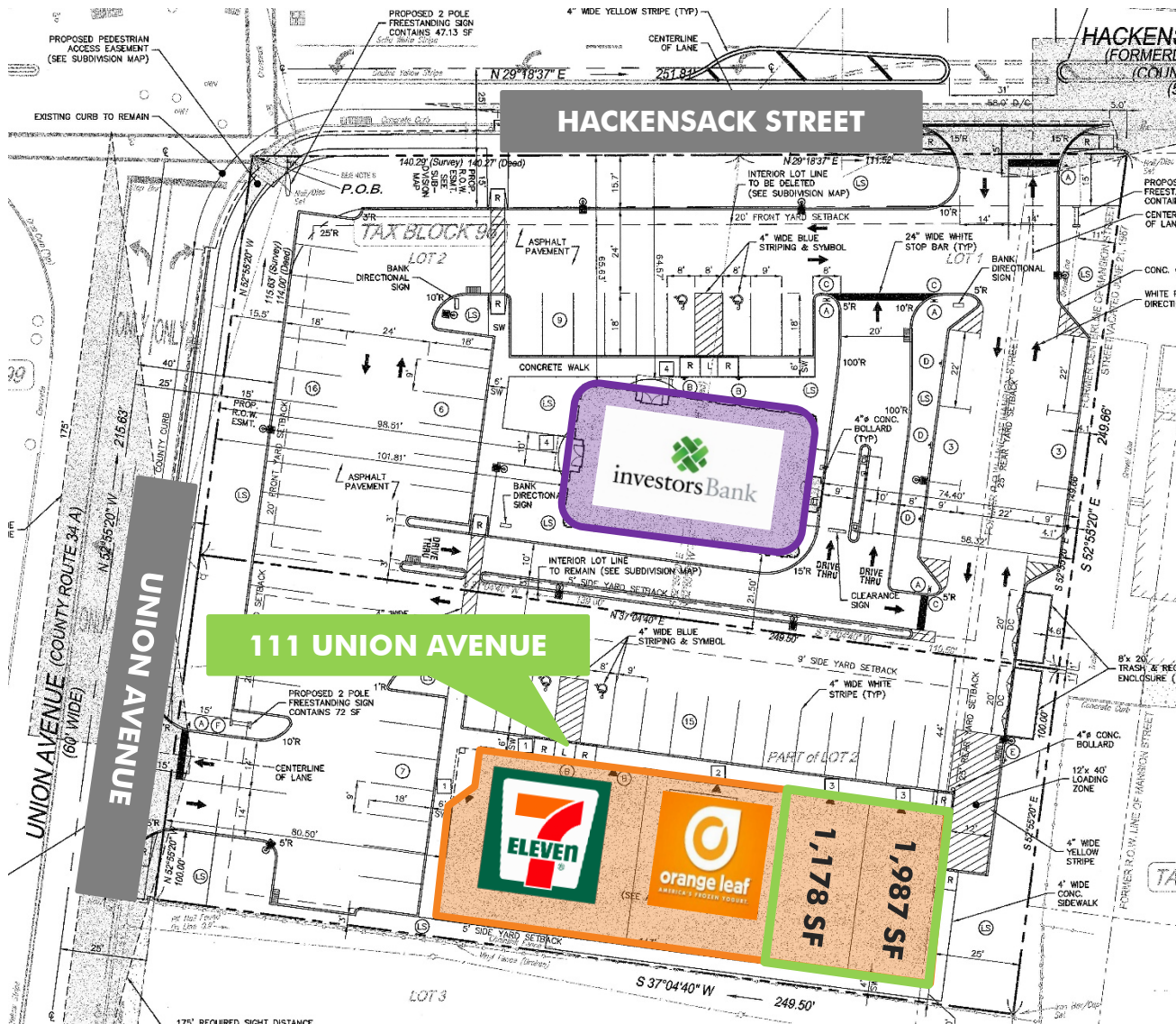
**CBRE**

FOR LEASE

# 111 Union Avenue

East Rutherford, NJ

RETAIL

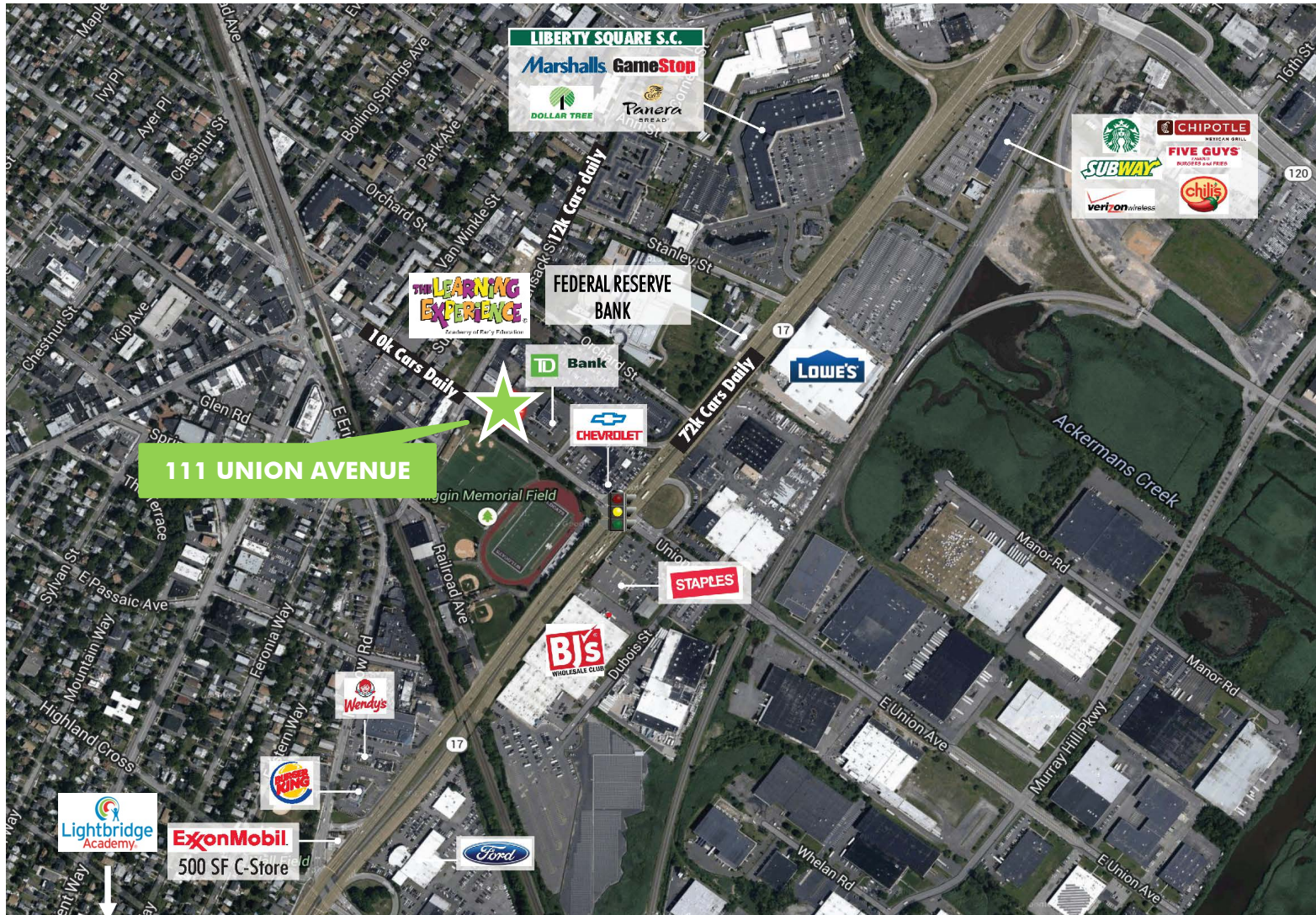


FOR LEASE

# 111 Union Avenue

East Rutherford, NJ

RETAIL



© 2019 CBRE, Inc. All rights reserved. This information has been obtained from sources believed reliable, but has not been verified for accuracy or completeness. You should conduct a careful, independent investigation of the property and verify all information. Any reliance on this information is solely at your own risk. CBRE and the CBRE logo are service marks of CBRE, Inc. All other marks displayed on this document are the property of their respective owners. Photos herein are the property of their respective owners. Use of these images without the express written consent of the owner is prohibited.