

1201 N. CHURCH STREET

MOORESTOWN, NJ

±4,266 SF AVAILABLE FOR SALE



property highlights.

- 1.65 acre former bank with drive-thru capability
- Minutes from I-295 and NJ turnpike
- Average Household income \$169,349 within 1 mile
- Close proximity to Moorestown Mall and Cherry Hill Mall
- Visibility at signalized intersection
- Zoned SRC-1

stats.

2019 DEMOGRAPHICS*	1 MILE	3 MILES	5 MILES
EST. POPULATION	6,647	67,328	189,483
EST. HOUSEHOLDS	2,460	25,837	71,691
EST. AVG. HH INCOME	\$169,349	\$130,441	\$117,276

TRAFFIC COUNT: NEW ALBANY ROAD 9,937 VPD
N. CHURCH STREET 9,731 VPD*ESRI 2019



METRO[®]
COMMERCIAL
REAL ESTATE, INC.

MetroCommercial.com | PHILADELPHIA, PA | PLYMOUTH MEETING, PA | MOUNT LAUREL, NJ | NAPLES, FL

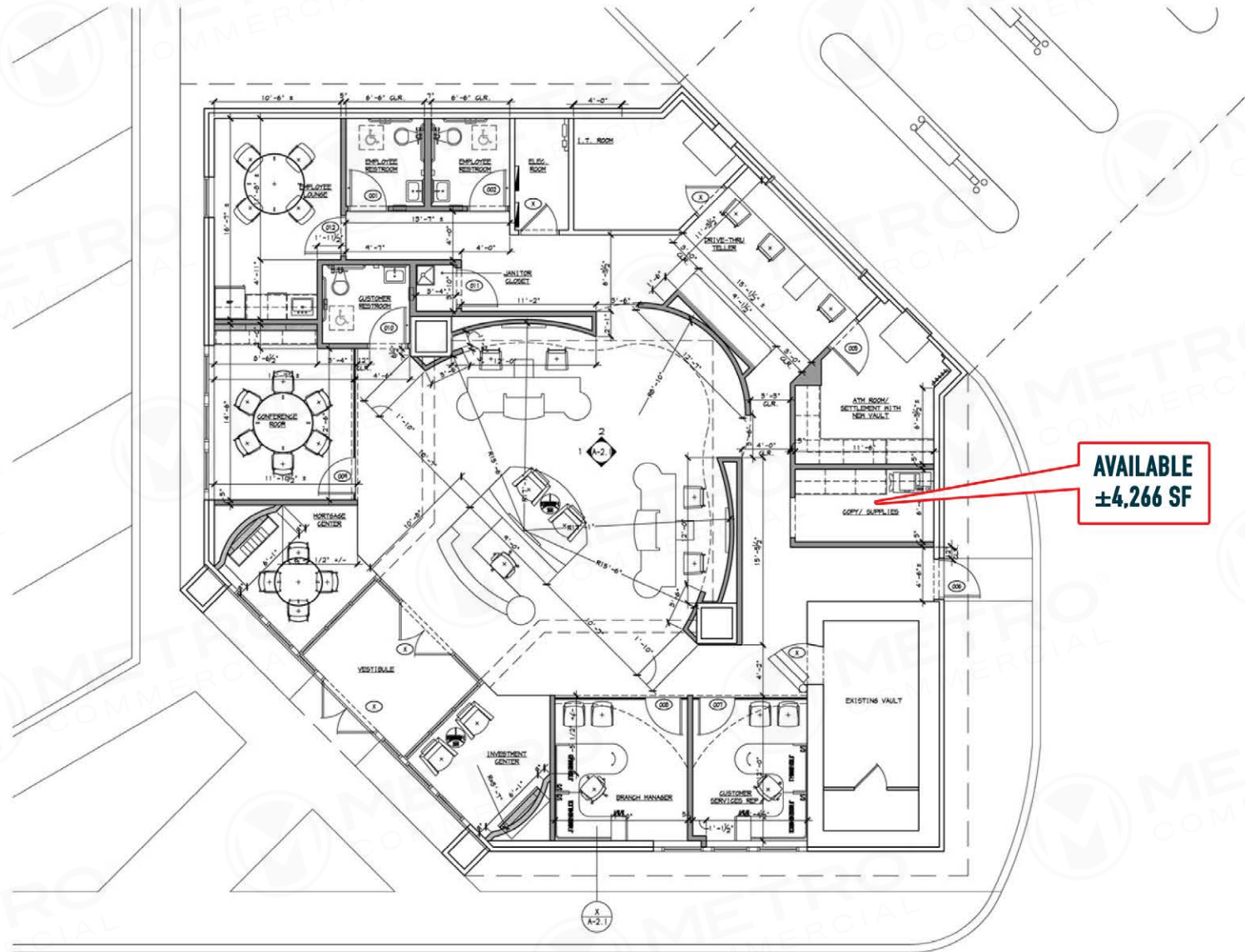
get in touch.

ALESSANDRO RANDAZZO

office 856.866.1900
direct 856.222.3014
arandazzo@metrocommercial.com

KJ KULIK

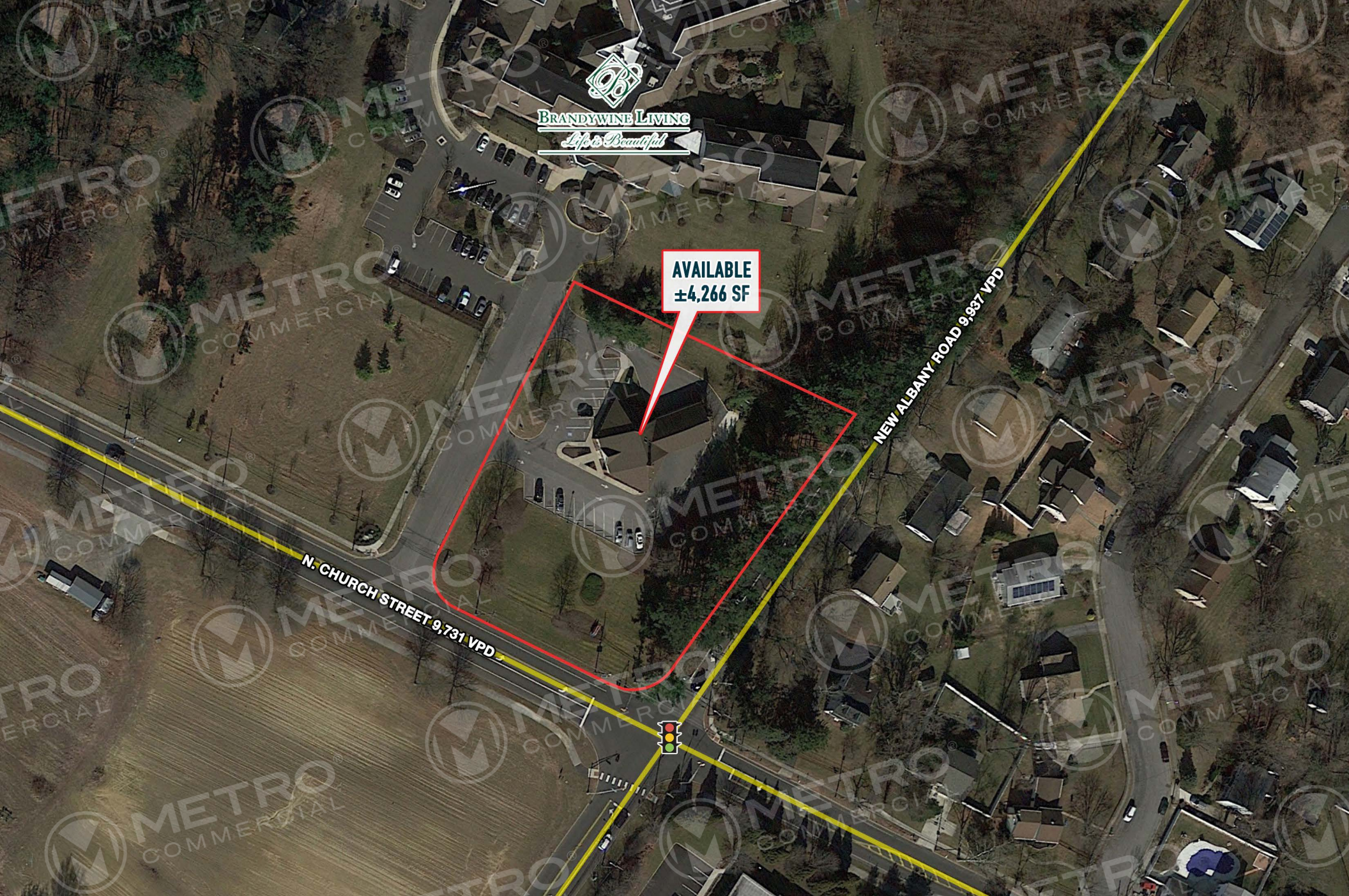
office 856.866.1900
direct 856.222.3012
kkulik@metrocommercial.com



The information and images contained herein are from sources deemed reliable. However, Metro Commercial Real Estate, Inc. makes no representation whatsoever as to their accuracy or authenticity. Images shown may be modified for illustrative purposes. Images may be out-of-date and not current. 12.17.19

**1201 N. CHURCH STREET
MOORESTOWN, NJ**





BRANDYWINE LIVING
Life is Beautiful

AVAILABLE
±4,266 SF

N. CHURCH STREET 9,731 VPD

NEW ALBANY ROAD 9,937 VPD

1201 N. CHURCH STREET
MOORESTOWN, NJ



The information and images contained herein are from sources deemed reliable. However, Metro Commercial Real Estate, Inc. makes no representation whatsoever as to their accuracy or authenticity. Images shown may be modified for illustrative purposes. Images may be out-of-date and not current. 12.17.19



The information and images contained herein are from sources deemed reliable. However, Metro Commercial Real Estate, Inc. makes no representation whatsoever as to their accuracy or authenticity. Images shown may be modified for illustrative purposes. Images may be out-of-date and not current. 12.17.19

**1201 N. CHURCH STREET
MOORESTOWN, NJ**



The information and images contained herein are from sources deemed reliable. However, Metro Commercial Real Estate, Inc. makes no representation whatsoever as to their accuracy or authenticity. Images shown may be modified for illustrative purposes. Images may be out-of-date and not current. 12.17.19

1201 N. CHURCH STREET
MOORESTOWN, NJ

