

115 West 29th Street

Between Sixth & Seventh Avenues

Price Reduced

ENTIRE 7TH FLOOR – 7,600 SF - Divisible

AREA: 3,800 - 7,600 SF
Unit A: 3,800 SF
Unit B: 3,800 SF

POSSESSION: Immediate

RENTAL RATE: Upon Request

TERM: Negotiable

PROPERTY FEATURES:

- Full floor identity
- Located within walking distance to Penn Station steps from Subway
- Tenant controlled A/C
- Bright space with windows on three sides
- Renovated Lobby and elevators

For more information contact:

Patrick J. Gardner
646.924.0017
pg@jwburkeandco.com

Lena D. Roth
646.924.0003
lr@jwburkeandco.com

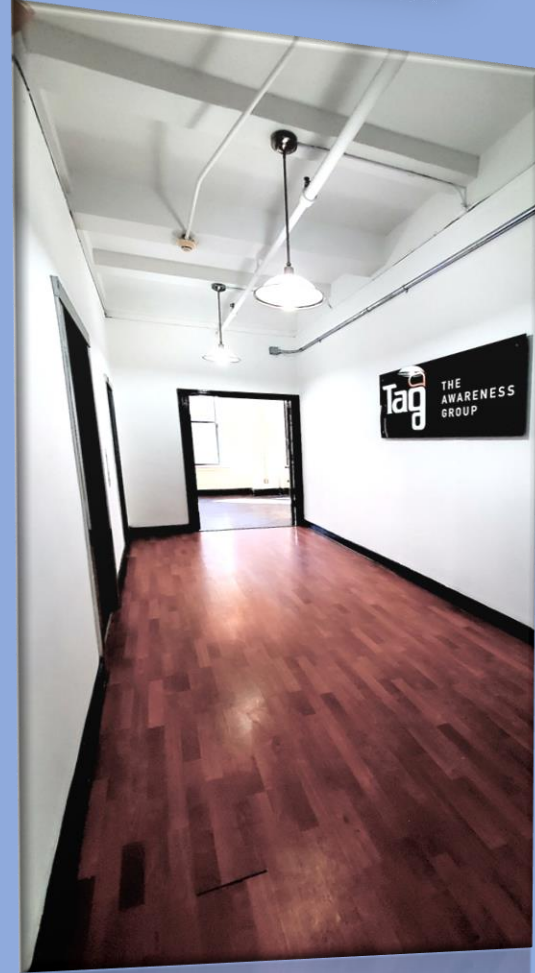
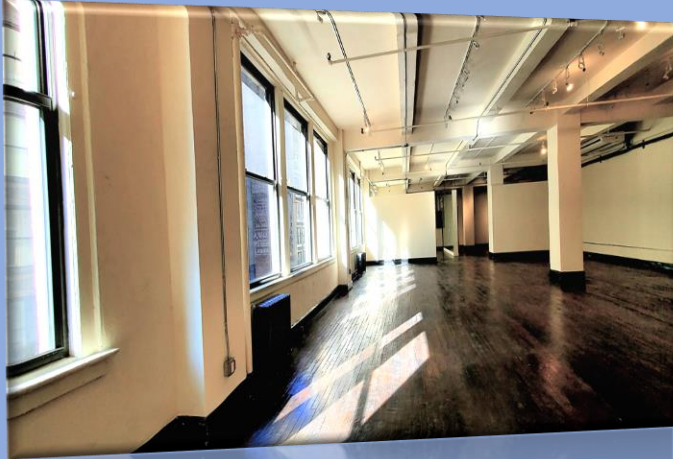
115 West 29th Street

Between Sixth & Seventh Avenues



115 West 29th Street

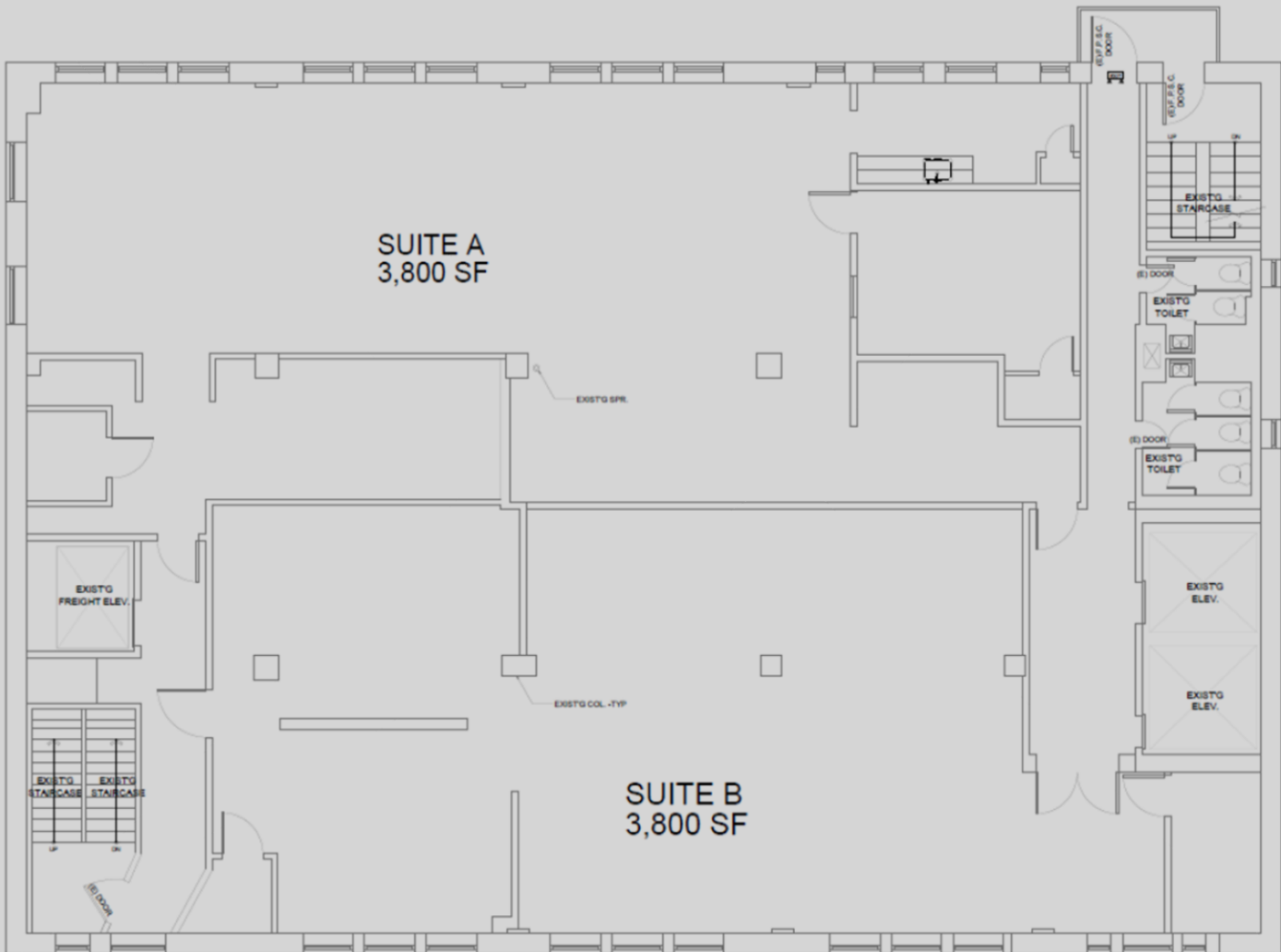
Between Sixth & Seventh Avenues



115 West 29th Street

Between Sixth & Seventh Avenues

7TH FLOOR – AS BUILT



115 West 29th Street

Between Sixth & Seventh Avenues

7TH FLOOR – OPEN LAYOUT

