

# PRIME RETAIL SPACE ADJACENT TO KOHL'S

Paducah, KY 42001 | 5191 Hinkleville Road | Hinkleville Road and Olivet Church | # 153



AVAILABLE SF:  
24,800 SF

FRONTAGE:  
APPROXIMATELY 97'10"

ZONING:  
COMMERCIAL

RATES:  
CALL FOR DETAILS

- 24,800 +/- SF space available adjacent to Kohl's
- Located on Hinkleville Road the main retail corridor in Paducah
- Great visibility

DEMOGRAPHICS	1 MILE	3 MILES	5 MILES	TRAFFIC COUNTS	
2018 POPULATION	15,436	40,546	59,954	I-24	43,462 VPD
2018 DAYTIME POPULATION	22,667	49,572	73,395	US-60	20,333 VPD
2018 AVERAGE HH INCOME	\$77,661	\$66,968	\$61,736	New Holt Rd	11,390 VPD
2018 MEDIAN HH INCOME	\$53,948	\$45,565	\$41,922		

## AREA ANCHORS



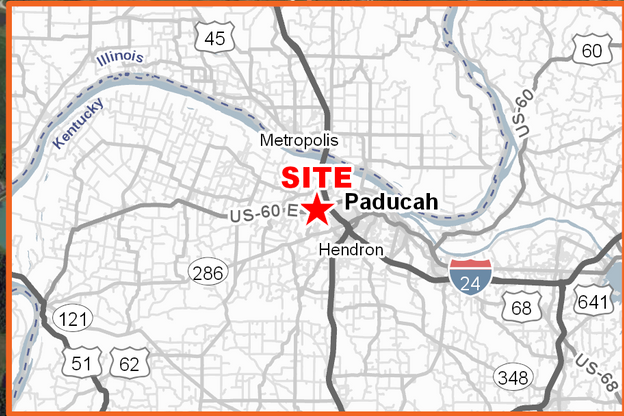
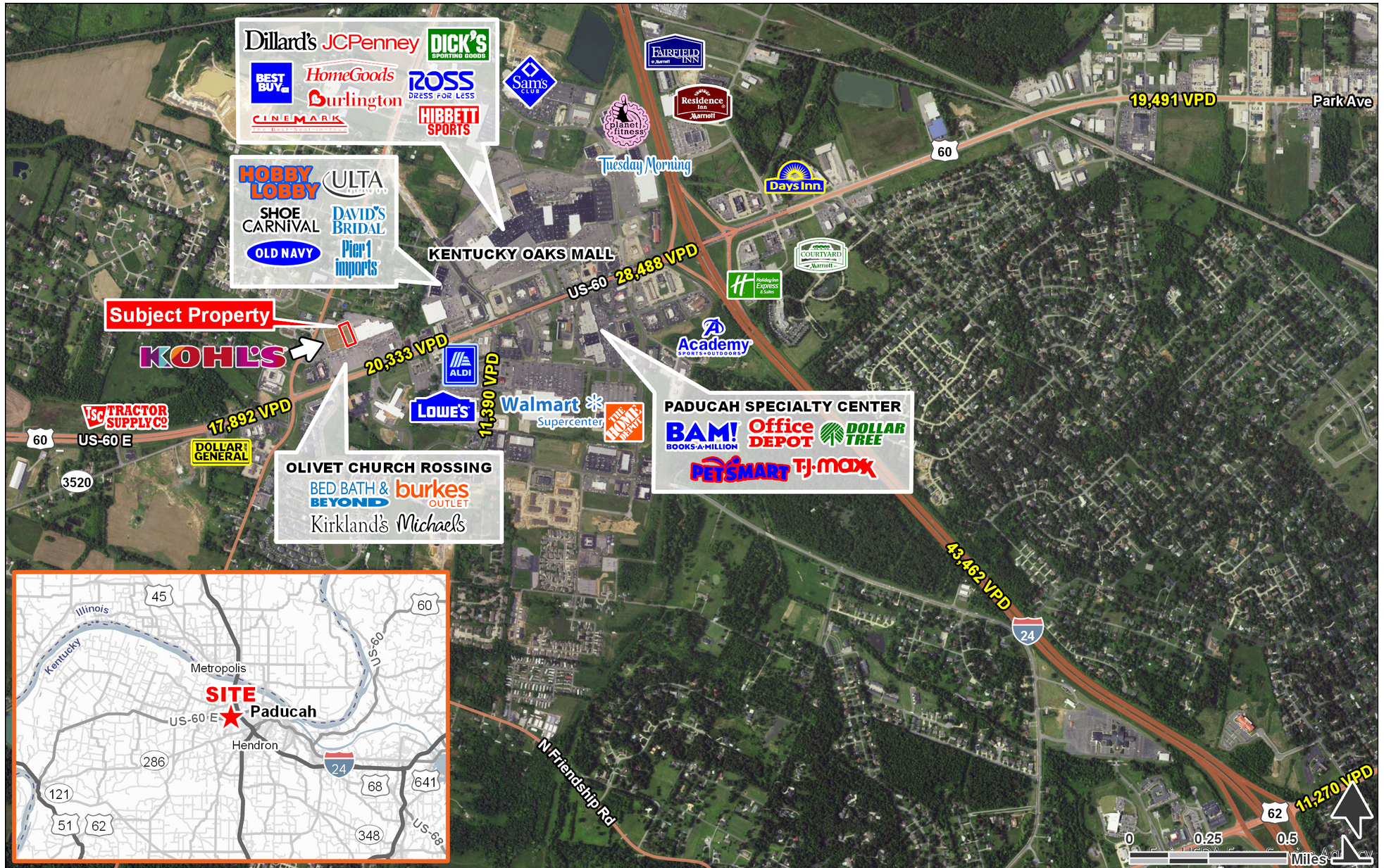
**FOR MORE INFORMATION, CONTACT EXCLUSIVE AGENT(S):**  
 KEVIN SCHREIBER • kevin.schreiber@tscg.com • 502.874.5934  
 KEVIN MAYHUGH • kevin.mayhugh@tscg.com • 502.874.5933  
 RONDA HOGAN, CCIM • ronda.hogan@tscg.com • 502.874.5936

Demographics: Esri 2018 No warranty expressed or implied has been made as to the accuracy of the information provided herein, no liability assumed for error or omissions.



# PRIME RETAIL SPACE ADJACENT TO KOHL'S

Paducah, KY 42001 | 5191 Hinkleville Road | Hinkleville Road and Olivet Church | # 153



**FOR MORE INFORMATION, CONTACT EXCLUSIVE AGENT(S):**  
 KEVIN SCHREIBER • kevin.schreiber@tscg.com • 502.874.5934  
 KEVIN MAYHUGH • kevin.mayhugh@tscg.com • 502.874.5933  
 RONDA HOGAN, CCIM • ronda.hogan@tscg.com • 502.874.5936

Demographics: Esri 2018 No warranty expressed or implied has been made as to the accuracy of the information provided herein, no liability assumed for error or omissions.



# PRIME RETAIL SPACE ADJACENT TO KOHL'S

Paducah, KY 42001 | 5191 Hinkleville Road | Hinkleville Road and Olivet Church | # 153



FOR MORE INFORMATION, CONTACT EXCLUSIVE AGENT(S):  
 KEVIN SCHREIBER • kevin.schreiber@tscg.com • 502.874.5934  
 KEVIN MAYHUGH • kevin.mayhugh@tscg.com • 502.874.5933  
 RONDA HOGAN, CCIM • ronda.hogan@tscg.com • 502.874.5936

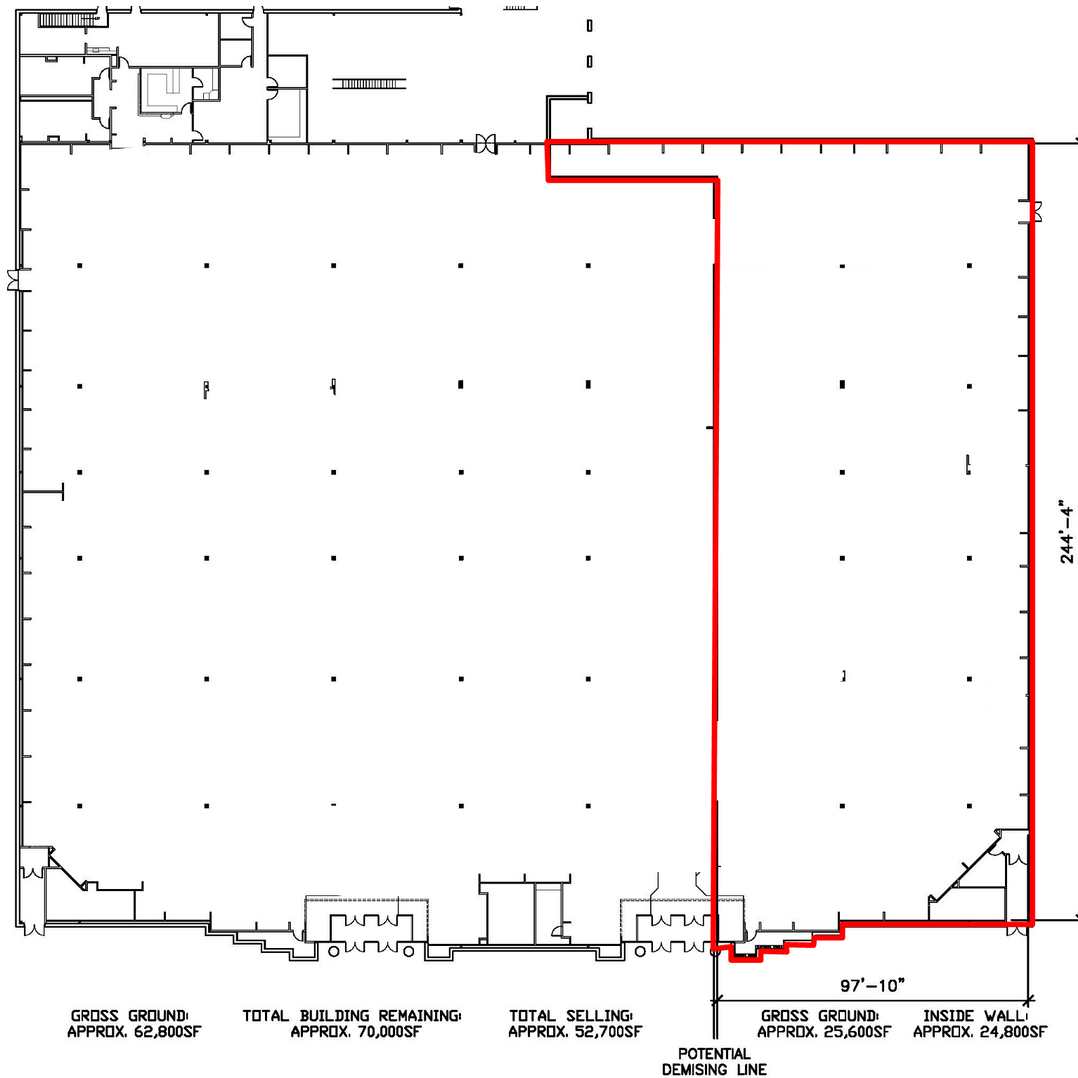
Demographics: Esri 2018 No warranty expressed or implied has been made as to the accuracy of the information provided herein, no liability assumed for error or omissions.

**Stan Johnson Co.**  
 THE NET LEASE AUTHORITY™

**CHAINLINKS**  
 RETAIL ADVISORS

# PRIME RETAIL SPACE ADJACENT TO KOHL'S

Paducah, KY 42001 | 5191 Hinkleville Road | Hinkleville Road and Olivet Church | # 153



#10153 Paducah, KY  
Updated: 10/18/17



**FOR MORE INFORMATION, CONTACT EXCLUSIVE AGENT(S):**  
KEVIN SCHREIBER • kevin.schreiber@tscg.com • 502.874.5934  
KEVIN MAYHUGH • kevin.mayhugh@tscg.com • 502.874.5933  
RONDA HOGAN, CCIM • ronda.hogan@tscg.com • 502.874.5936

Demographics: Esri 2018 No warranty expressed or implied has been made as to the accuracy of the information provided herein, no liability assumed for error or omissions.

