



For Sale

Two Buildings Office/Retail Development (Westside)

650 Greeland Ave, Jacksonville, FL 32221

PROPERTY FEATURES

- > One (1) office building of 888± SF and one (1) car wash building of 1,944± SF
- > 0.67± acres of land
- > Zoned: CCG-1
- > Excellent for a small business or redevelopment opportunity
- > Parcel has great access with two (2) corners on three (3) roads

Asking Price:

\$425,000

Contact us:

GARY MONTOUR

Senior Director

+1 904 861 1116

gary.montour@colliers.com

RYAN MONTOUR

Client Service Specialist

+1 904 861 1129

ryan.montour@colliers.com



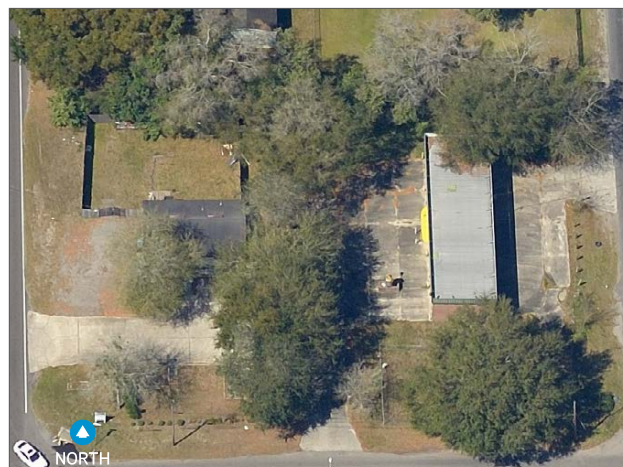
COLLIERS INTERNATIONAL
76 S. Laura Street | Suite 1500
Jacksonville, FL 32202
www.colliers.com/jacksonville

This document has been prepared by Colliers International for advertising and general information only. Colliers International makes no guarantees, representations or warranties of any kind, expressed or implied, regarding the information including, but not limited to, warranties of content, accuracy and reliability. Any interested party should undertake their own inquiries as to the accuracy of the information. Colliers International excludes unequivocally all inferred or implied terms, conditions and warranties arising out of this document and excludes all liability for loss and damages arising there from. This publication is the copyrighted property of Colliers International and/or its licensor(s). ©2020. All rights reserved.

Building Summary

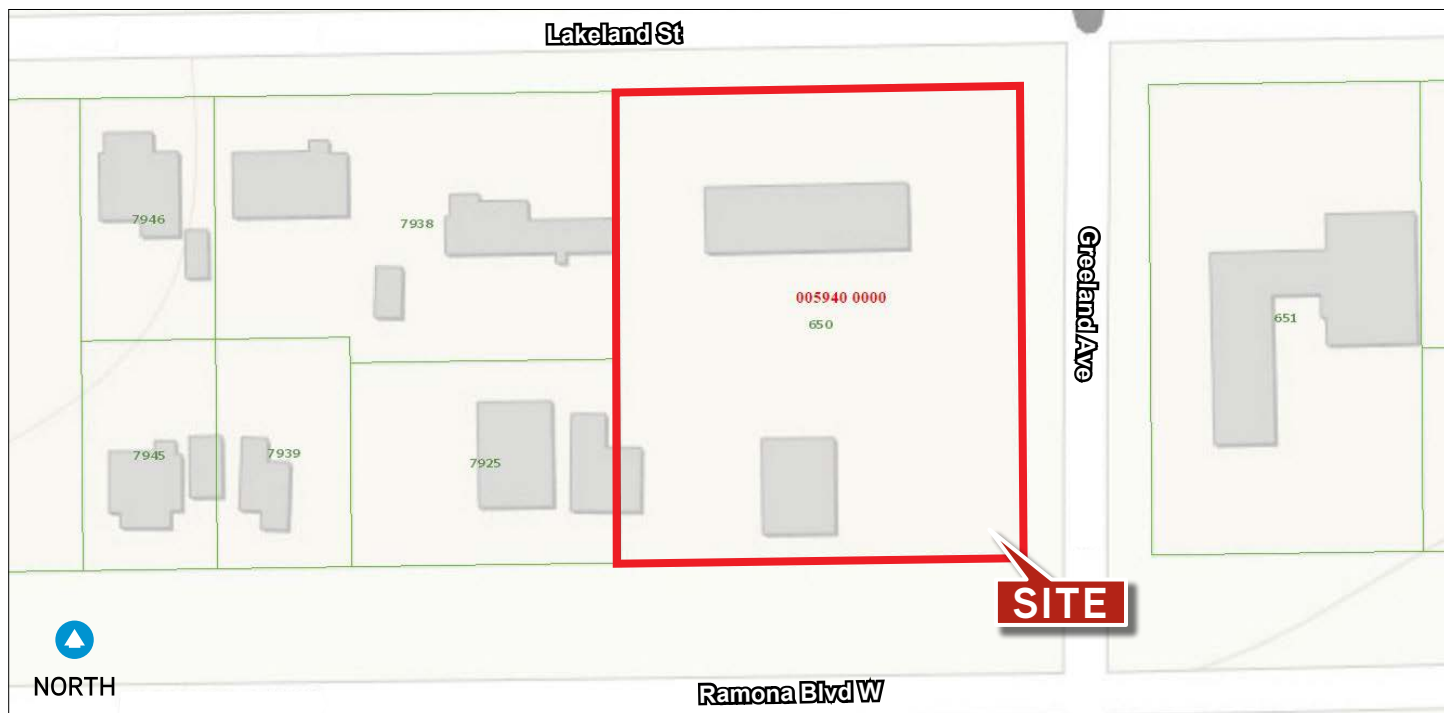
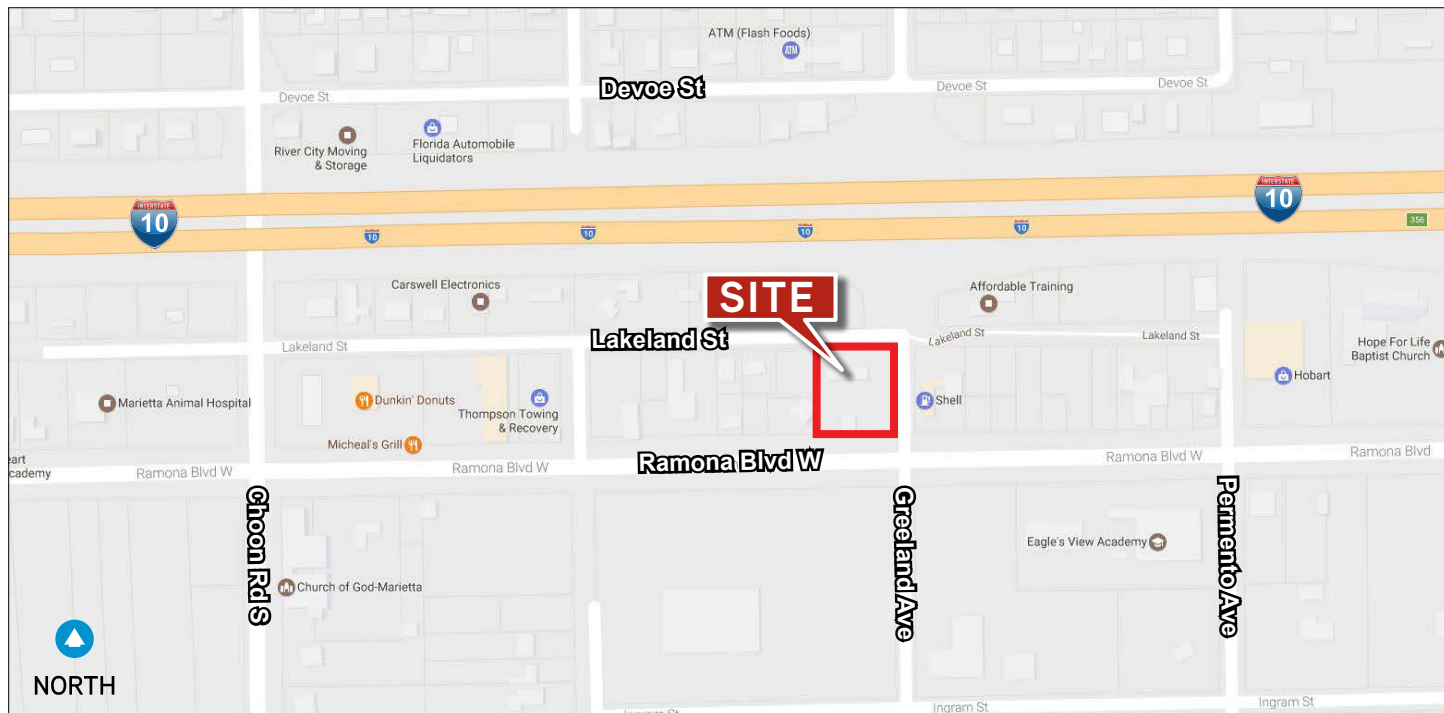
650 Greeland Ave, Jacksonville, FL 32221

Building Sizes:	Office: 888± SF Car Wash: 1,944± SF
Parking:	6± surface spaces
Building Dimensions:	Office: 37'± x 24'± Car Wash: 81'± x 24'±
Year Built:	Office: 1997 Car Wash: 1944
Land Area:	0.67± acres
Lot Dimensions	153'± x 185'±
Zoning:	CCG-1
Parcel Number:	005940 0000
Clear Height:	Office: 8'
Security:	Both building have security camera mounted
Building Construction:	Office: block Car Wash: brick
Roof:	Office: pitched Car Wash: flat
Access:	Via Ramona Blvd, Greeland Ave, Lakeland St
Utilities:	JEA Sewer and water
Electrical:	JEA supplied
Lighting:	Fluorescent



Street & Plat Map

650 Greeland Ave, Jacksonville, FL 32221



Property Photos

650 Greeland Ave, Jacksonville, FL 32221



Property Photos

650 Greeland Ave, Jacksonville, FL 32221



Aerial & Demographics

650 Greeland Ave, Jacksonville, FL 32221



5 Mile Radius

Source: Esri 2021

Population Trend



6,038

2000 Total Population



6,032

2010 Total Population



6,418

Current Total Population



6,656

5 Yr Projected Total Population

Average Household Income

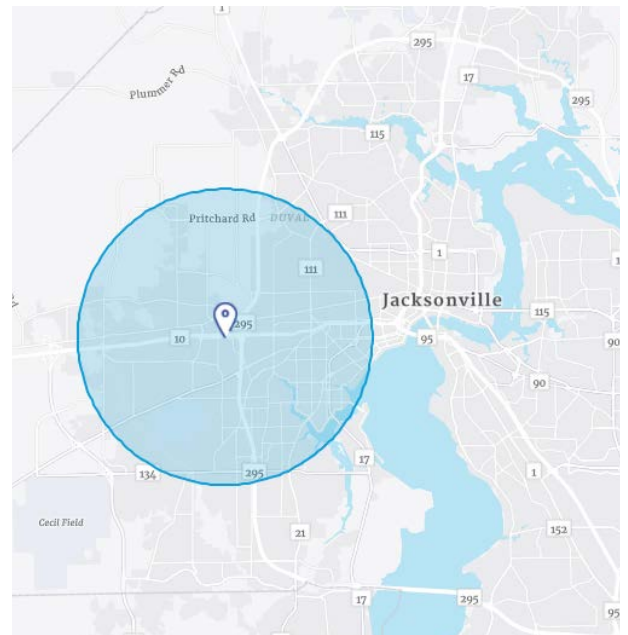


64,524

Current Average HH Income

69,320

5 Yr Projected Avg HH Income



Contact us:

GARY MONTOUR

Senior Director
+1 904 861 1116
gary.montour@colliers.com

RYAN MONTOUR

Client Service Specialist
+1 904 861 1129
ryan.montour@colliers.com

COLLIERS INTERNATIONAL
76 S. Laura Street | Suite 1500
Jacksonville, FL 32202
www.colliers.com/jacksonville



Accelerating success.