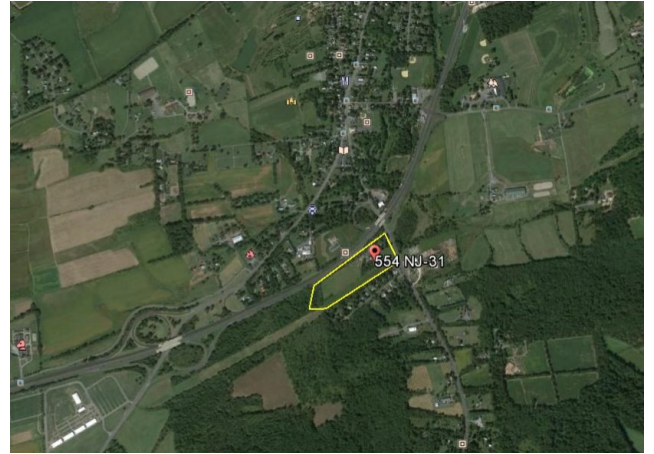


# 554 Route 31 North

Ringoes, NJ 08551

PRESENTED BY:  
LANCE BRAM COMMERCIAL BROKERAGE

## Development Opportunity



### PROPERTY HIGHLIGHTS

- 14.15 Acres at \$141,000 Per Acre
- Approved for Residential Development
- Existing Natural Gas, Electric, Water & Sewer Hookups
- Corner of Route 31 and Route 202
- Situated between Flemington and Hopewell
- Site is Flat and Clear
- 2015 Property Tax: \$24,819

**Asking Price: \$2,000,000**



FOR MORE INFORMATION CONTACT EXCLUSIVE BROKERS:

*Lance Bram*  
COMMERCIAL BROKERAGE  
[www.lancebram.com](http://www.lancebram.com)

PHONE: 732.545.1850 Ext. 19 SHAWN BROWNELL

This information has been secured from sources we believe to be reliable. Accordingly, no warranty or representation, express or implied, is made to the accuracy of the information contained herein, and same submitted to errors, omissions, change of price, rental or other conditions, withdrawal notice, and to any special listing conditions imposed by our principals.