

GREAT LOCATION NEAR I40/I30 INTERCHANGE FOR LEASE

HIGH-VISIBILITY, GREAT LOCATION

2402 Main, North Little Rock, AR 72114



PRICE PER UNIT:	\$15.00/ Sqft
AVAILABLE SF:	6,084
LEASE RATE:	\$15.00sqft/Year
LOT SIZE:	0.65 Acres
BUILDING SIZE:	6,084 SF
BUILDING CLASS:	A
YEAR BUILT:	2005
ZONING:	C-3
CROSS STREETS:	Main And Pershing

PROPERTY OVERVIEW

Property offered for lease at \$15.00 SqFt per year with owner paying for insurance, taxes, major building system replacement, and structural matters (such as roof)

PROPERTY FEATURES

- Great building in an unsurpassed location!
- High Visibility-Right across from the newly re-modeled North Little Rock High School!
- Surrounded by businesses such as Restaurants, Hotels, a pharmacy, medical facilities, retail, and other essential services.
- Great floor plan enables multi-tenant potential
- High potential for adaptive re-use
- Building was formerly a cosmetology school--equipment has been removed
- Leasing for \$15.0/sqft!

LITTLE ROCK
501.940.3231
12814 Cantrell Road,
12814
Little Rock, AR 72223

JOHNNY MITCHUM, MBA,CPA(INACTIVE)
Commercial Director And Prin. Auctioneer (Aalb 1787)
501.940.3231
jmitchum@kw.com
AR #EB00043654

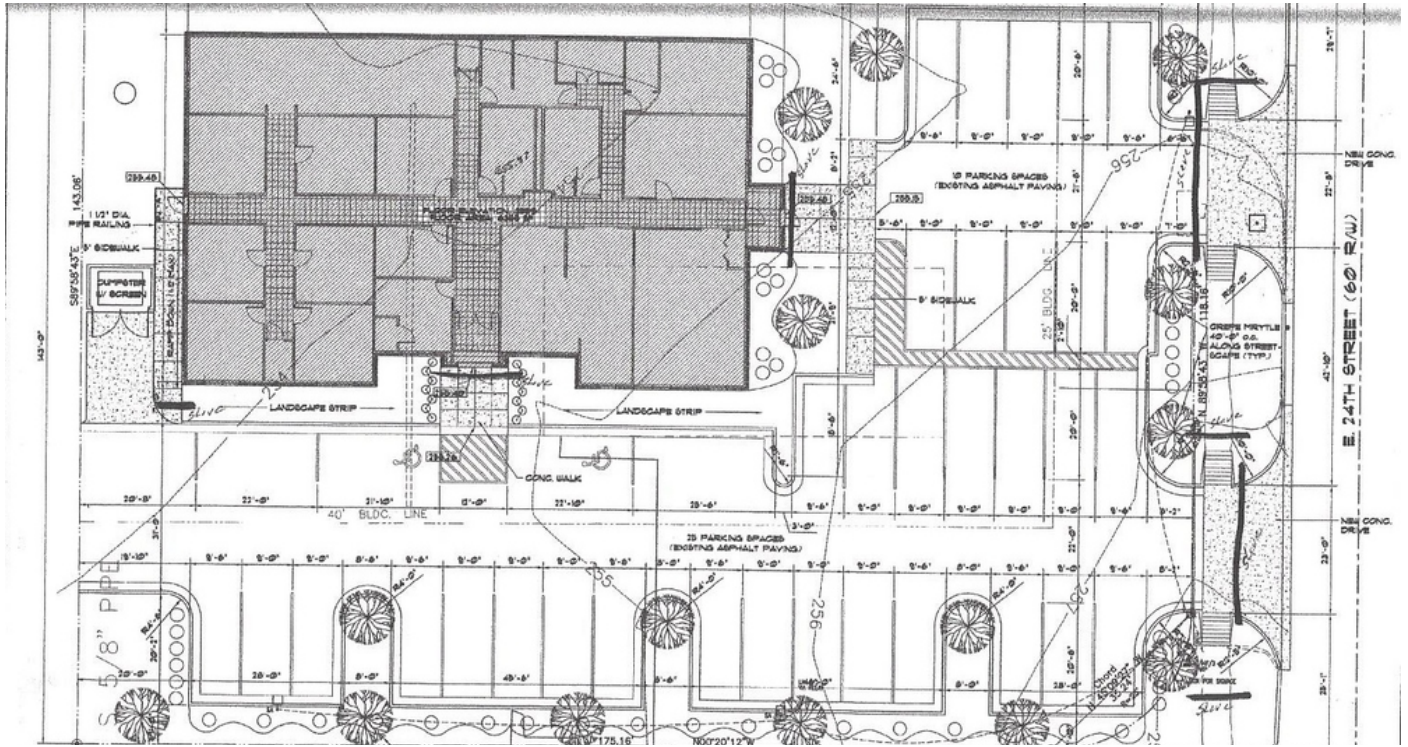
All information deemed reliable but is not guaranteed. Prospective buyers and/or their agents should do their own due diligence.



GREAT LOCATION NEAR I40/I30 INTERCHANGE FOR LEASE



2402 Main, North Little Rock, AR 72114



LITTLE ROCK
501.940.3231
12814 Cantrell Road,
12814
Little Rock, AR 72223

JOHNNY MITCHUM, MBA, CPA (INACTIVE)
Commercial Director And Prin. Auctioneer (Aalb 1787)
501.940.3231
jmitchum@kw.com
AR #EB00043654

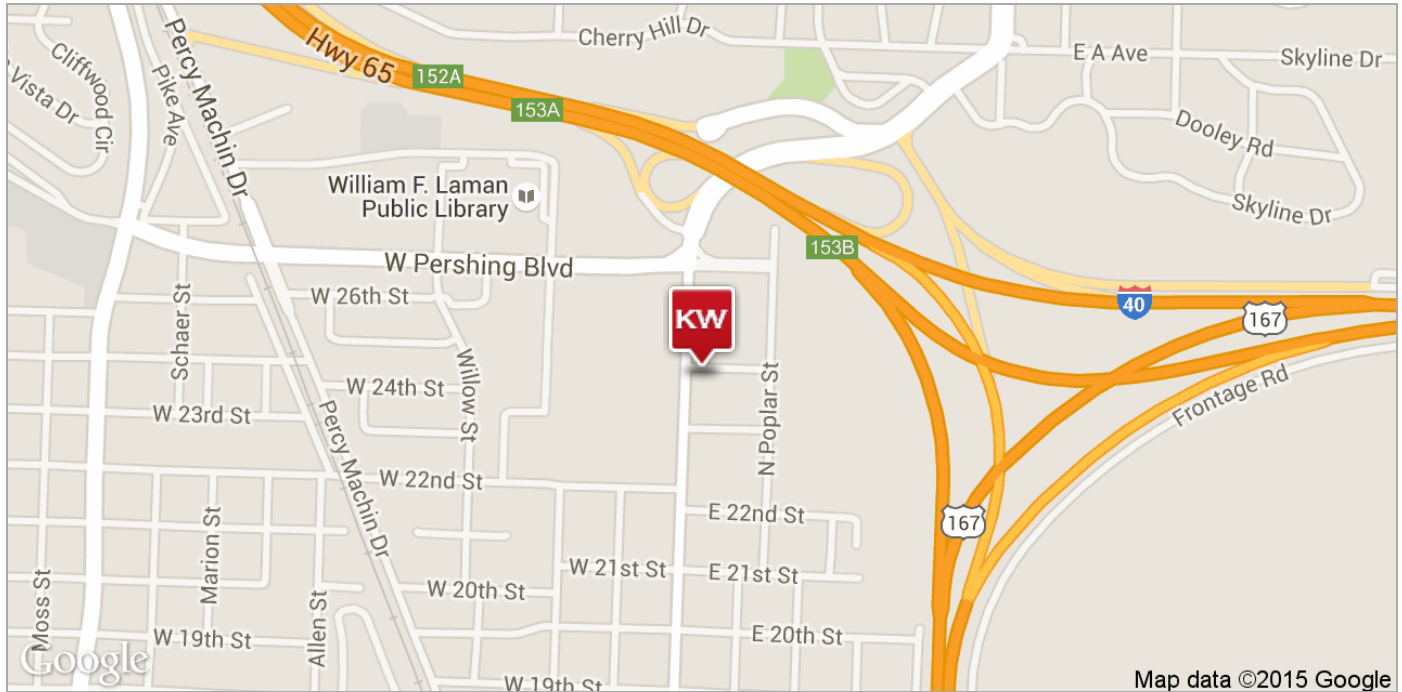
All information deemed reliable but is not guaranteed. Prospective buyers and/or their agents should do their own due diligence.



GREAT LOCATION NEAR I40/I30 INTERCHANGE FOR LEASE



2402 Main, North Little Rock, AR 72114



LITTLE ROCK
501.940.3231
12814 Cantrell Road,
12814
Little Rock, AR 72223

JOHNNY MITCHUM, MBA, CPA (INACTIVE)
Commercial Director And Prin. Auctioneer (Aalb 1787)
501.940.3231
jmitchum@kw.com
AR #EB00043654

All information deemed reliable but is not guaranteed. Prospective buyers and/or their agents should do their own due diligence.

