



Price Blvd

AADT 14,300

PRICE CREEK WEST PARCE

WEST PARCEL - 7

1120 CREIGHTON CREEK DRIVE
NORTH PORT, FL 34288

Ashley Barrett Bloom
Managing Director
941.366.1136
ashley.bloom@svn.com

Michelle Matson
Tenant Rep. Advisor
941.366.1136
michelle.matson@svn.com

Margeaux Vallee
Marketing Director
941.366.1004
mvallee@svn.com



Toledo Blade Blvd

AADT 19,300

Creighton Creek Dr



Price Blvd

AADT 14,300

PROPERTY INFORMATION

- Property Summary
- Additional Photos

LOCATION INFORMATION

- Regional Map
- Location Maps
- Site Plan

SITE PLANS

- Site Plan
- Site Plan

Additional Plans & Plat

- Grading, Paving & Drainage Plan

DEMOGRAPHICS

- Demographics Report
- Demographics Map

ADVISOR BIOS

- Advisor Bio & Contact 1
- Advisor Bio & Contact 2

1



2



3

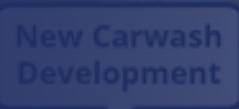


4



5

6



Toledo Blade Blvd

AADT 19,300



1 PROPERTY INFORMATION

1120 Price Creek Way
North Port, FL 34288

Property Summary



OFFERING SUMMARY

Sale Price: \$1,199,000

Lot Size: 4.74 Acres

Zoning: PCDN

PROPERTY OVERVIEW

Retail land for Sale, BTS, or Ground Lease
Can be combined with the East Parcel for total of 8.63 Acres.

PROPERTY HIGHLIGHTS

- Adjacent to Publix Anchored Shopping Center
- West Parcel- 3.6 AC of developable area
- Surrounded by retail & new developments
- 224 apartment homes planned directly across the street, next to proposed WaWa
- WaWa proposed on SEC of Toledo Blade Blvd. and E. Price Blvd.
- 126 apartment units proposed for the corner of Price and Citizens
- Storm Water Retention Pond [95% Buildable per Permit]
- ERC Fees reserved at no cost to buyer.
- No known wetlands.
- Activity Center E zoning

Additional Photos



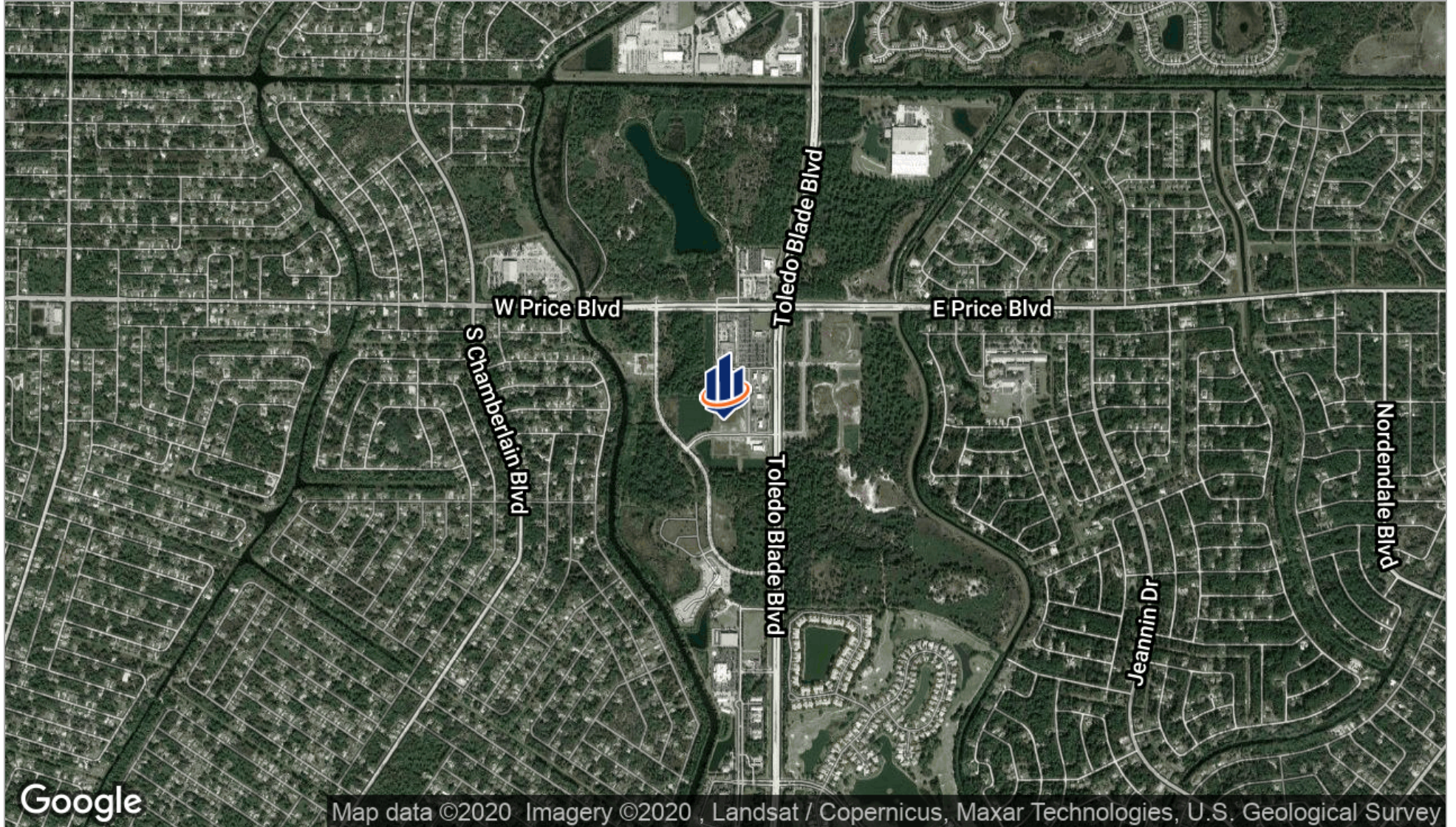
2 LOCATION INFORMATION

1120 Price Creek Way
North Port, FL 34288

Regional Map



Location Maps



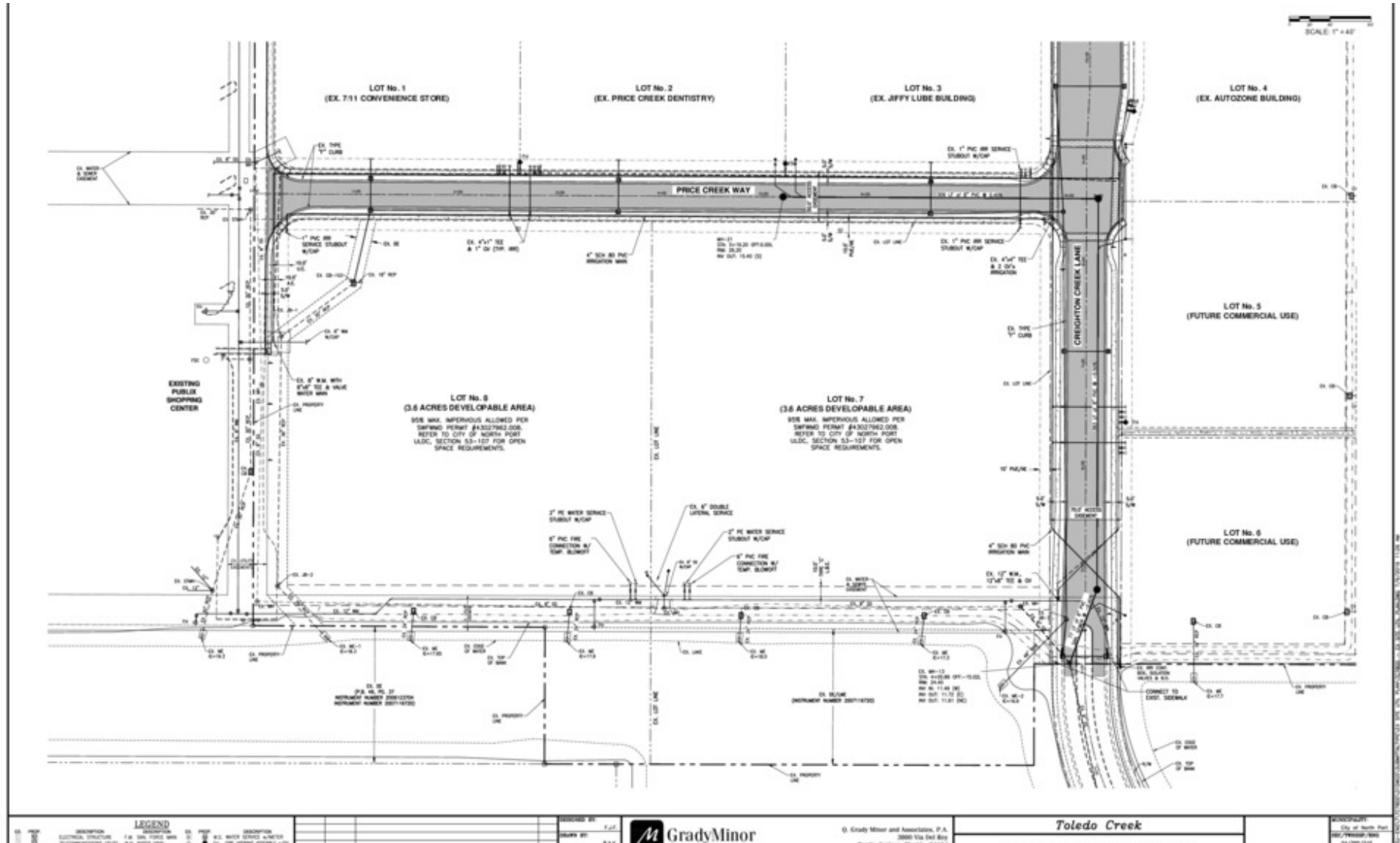
Site Plan



3 SITE PLANS

1120 Price Creek Way
North Port, FL 34288

Site Plan



4 ADDITIONAL PLANS & PLAT

1120 Price Creek Way
North Port, FL 34288

Plat Map

TOLEDO CREEK

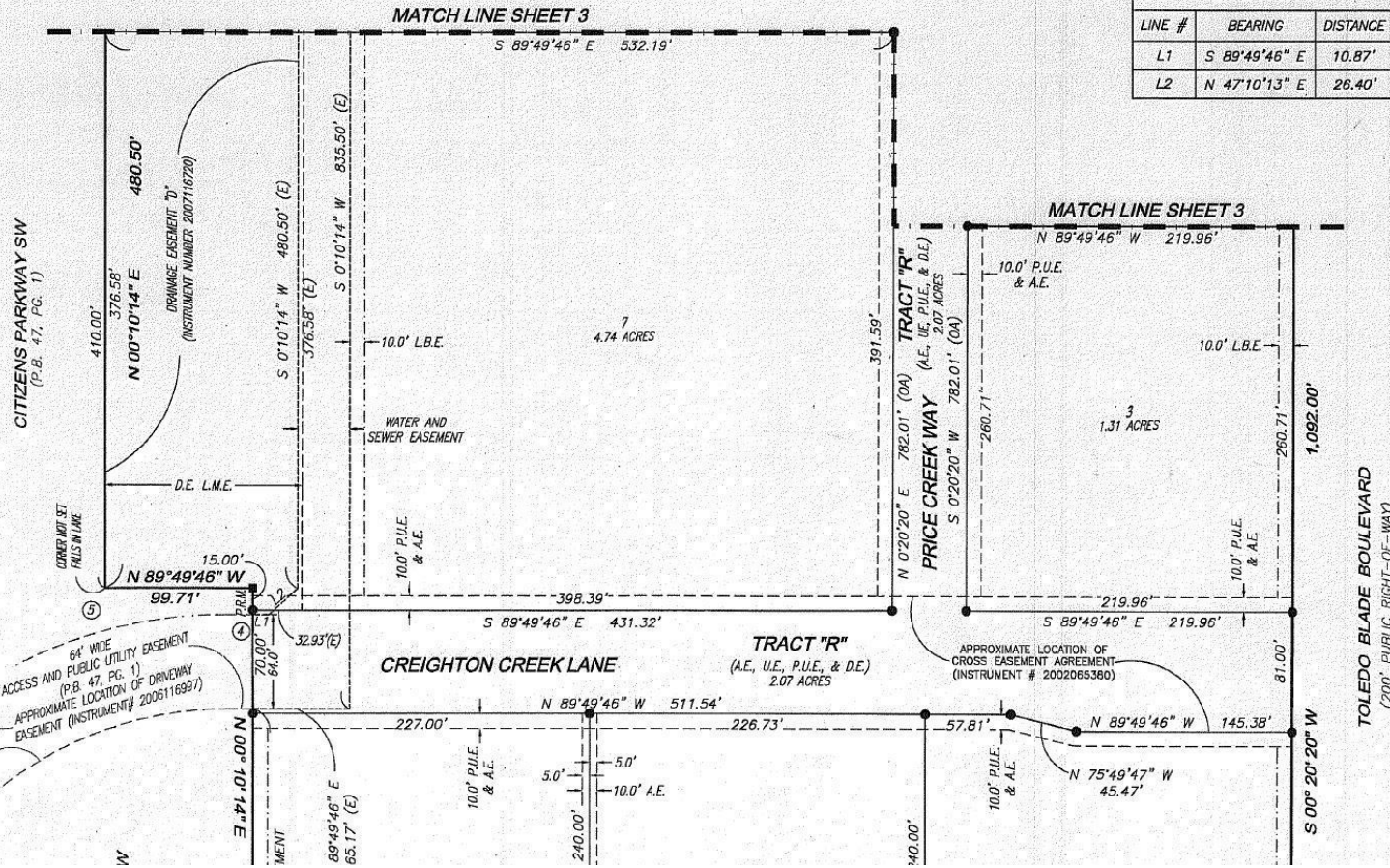
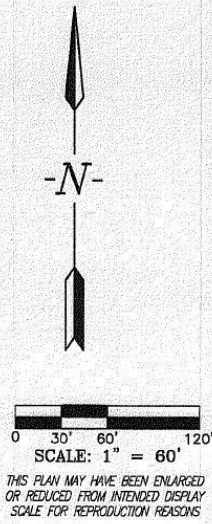
PLAT BOOK 50

PAGE 19C

SHEET 4 OF 4

A REPLAT OF TRACT A, PRICE CROSSINGS, RECORDED IN PLAT BOOK 46, PAGES 37 THROUGH 37B, PUBLIC RECORDS OF SARASOTA COUNTY, LOCATED IN SECTION 24, TOWNSHIP 39 SOUTH, RANGE 21 EAST, CITY OF NORTH PORT, SARASOTA COUNTY, FLORIDA.

LINE TABLE		
LINE #	BEARING	DISTANCE
L1	S 89°49'46" E	10.87'
L2	N 47°10'13" E	26.40'



The information presented here is deemed to be accurate, but it has not been independently verified. We make no guarantee, warranty or representation. It is your responsibility to independently confirm accuracy and completeness. All SVN® offices are independently owned and operated.

5

DEMOGRAPHICS

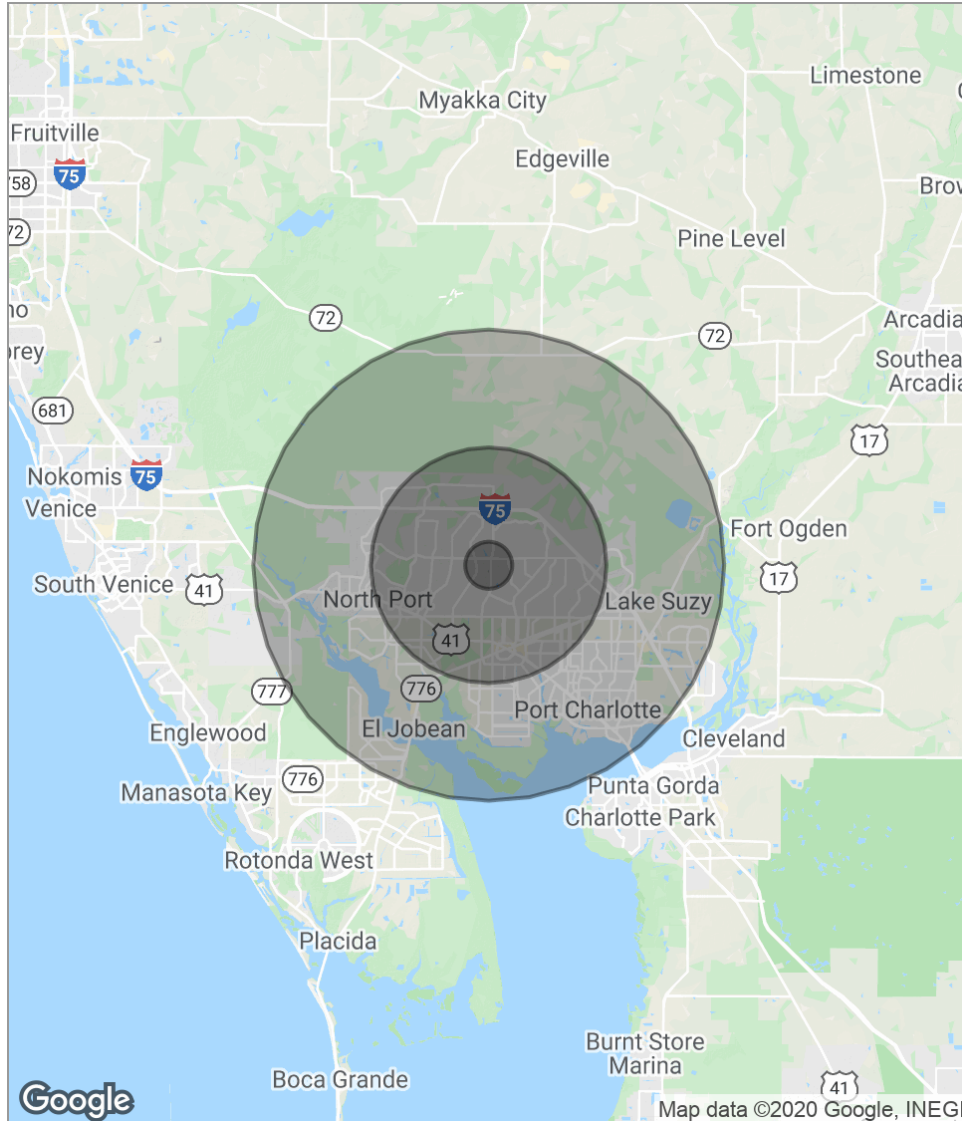
1120 Price Creek Way
North Port, FL 34288

Demographics Report

	1 MILE	5 MILES	10 MILES
Total population	2,074	50,780	150,066
Median age	36.9	44.0	48.1
Median age (male)	36.1	42.5	46.3
Median age (female)	37.2	44.9	49.3
Total households	744	20,281	63,833
Total persons per HH	2.8	2.5	2.4
Average HH income	\$62,271	\$57,893	\$54,865
Average house value	\$212,880	\$210,184	\$206,553

** Demographic data derived from 2010 US Census*

Demographics Map



POPULATION	1 MILE	5 MILES	10 MILES
Total population	2,074	50,780	150,066
Median age	36.9	44.0	48.1
Median age [Male]	36.1	42.5	46.3
Median age [Female]	37.2	44.9	49.3
HOUSEHOLDS & INCOME	1 MILE	5 MILES	10 MILES
Total households	744	20,281	63,833
# of persons per HH	2.8	2.5	2.4
Average HH income	\$62,271	\$57,893	\$54,865
Average house value	\$212,880	\$210,184	\$206,553

* Demographic data derived from 2010 US Census

6 ADVISOR BIOS

1120 Price Creek Way
North Port, FL 34288

Advisor Bio & Contact 1

ASHLEY BARRETT BLOOM

Managing Director

2044 Constitution Boulevard
Sarasota, FL 34321
T 941.366.1136
C 941.961.7109
ashley.bloom@svn.com

PROFESSIONAL BACKGROUND

Ashley Barrett Bloom has been affiliated with SVN for approximately 10 years. Mr. Bloom has established his practice as a land expert locally, regionally, and nationally. By combining a strong network of Offices & Advisors with a spirit of collaboration, Bloom provides his clients with a listing team that provides local expertise with a regional & national platform. To further add value to clients, Bloom has taken on the role of owner's representative in the entitlement process of multiple projects. With a long history in land development, Bloom has extensive relationships with industry professionals as well as buyers of both residential and commercial land. In 2018, Bloom and long time business partner, J. Chris Malkin, founded SVN Lotus Commercial Real Estate Advisors. SVN Lotus was founded with two offices in Charlotte & Sarasota Counties and is well positioned to service Southwest Florida.

Bloom initiated and was named the founding Chairman of the Land & Development Services Product Council for SVN. Under his leadership, Bloom has helped institute a national network of land advisors, collaborative marketing program, a SVN land website, and land specific sales calls. Bloom also created and leads the Florida Land Alliance which is a network of land advisors within the State of Florida. Personally, Bloom works on a portfolio of commercial and residential tracts in size from 1 acre to several thousand acres. His listing clientele includes large equity funds, national banks, land investment groups, and single investors. Bloom has a strong network of buyers that include local, regional, and national investors & developers.

Prior to joining SVN, Bloom specialized in land planning, horizontal development, and conversions/renovations. While developing these projects, Bloom has also taken the role of Managing Partner. During that time period, he has successfully acquired, entitled, and sold thousands of acres of land. Bloom still invests in land with a focus on entitlement and a long term hold strategy.

Bloom has been developing real estate for more than 20 years in Florida, North Carolina, and Arkansas. Prior to developing real estate, Bloom worked for Coopers & Lybrand LLP in the Financial Advisory Services division where he obtained his Certified Public Accountant's (CPA) License. Relevant experience included Litigation Support Services, Acquisition Due Diligence, and Financial Modeling. Mr. Bloom has also served on an Advisory Board of a small community bank in South Florida.

EDUCATION

Lehigh University 1996 - School of Business And Economics

MEMBERSHIPS & AFFILIATIONS

1997 State of Illinois - Certified Public Accountant (Inactive)

2012 LEED Green Associate

Advisor Bio & Contact 2

MICHELLE MATSON

Tenant Rep. Advisor

2044 Constitution Boulevard
Sarasota, FL 34321
T 941.366.1136
C 781.929.6401
michelle.matson@svn.com

PROFESSIONAL BACKGROUND

Michelle Matson is a Commercial Tract Specialist with SVN Lotus.

Michelle brings with her to SVN over 18 years of Sales and Marketing experience. She is responsible for bringing several out of state developers into Florida to invest in many projects throughout the Suncoast. She has worked with national and local tenants to help them find their retail, office and industrial properties throughout Sarasota and Manatee Counties.

A graduate of Johnson & Wales University with a BS in Hospitality Business Management.

Michelle is a member of the International Council of Shopping Centers (ICSC).

Michelle and her husband Jamie like to spend their free time kayaking, hiking, biking and having fun with their two rescue pups, BoBo and Iggy.

EDUCATION

Bachelor of Arts in English from the University of Massachusetts - Boston

Bachelor of Science degree from Johnson and Wales University, Providence, RI

MEMBERSHIPS & AFFILIATIONS

ICSC



2044 Constitution Boulevard
Sarasota, FL 34321
941.366.1136
www.svn.com