

**F O R S A L E**  
**ASKING PRICE: \$1,400,000**

# MILL CREEK LAND SITE

17200 Bothell-Everett Hwy / Mill Creek, WA 98012

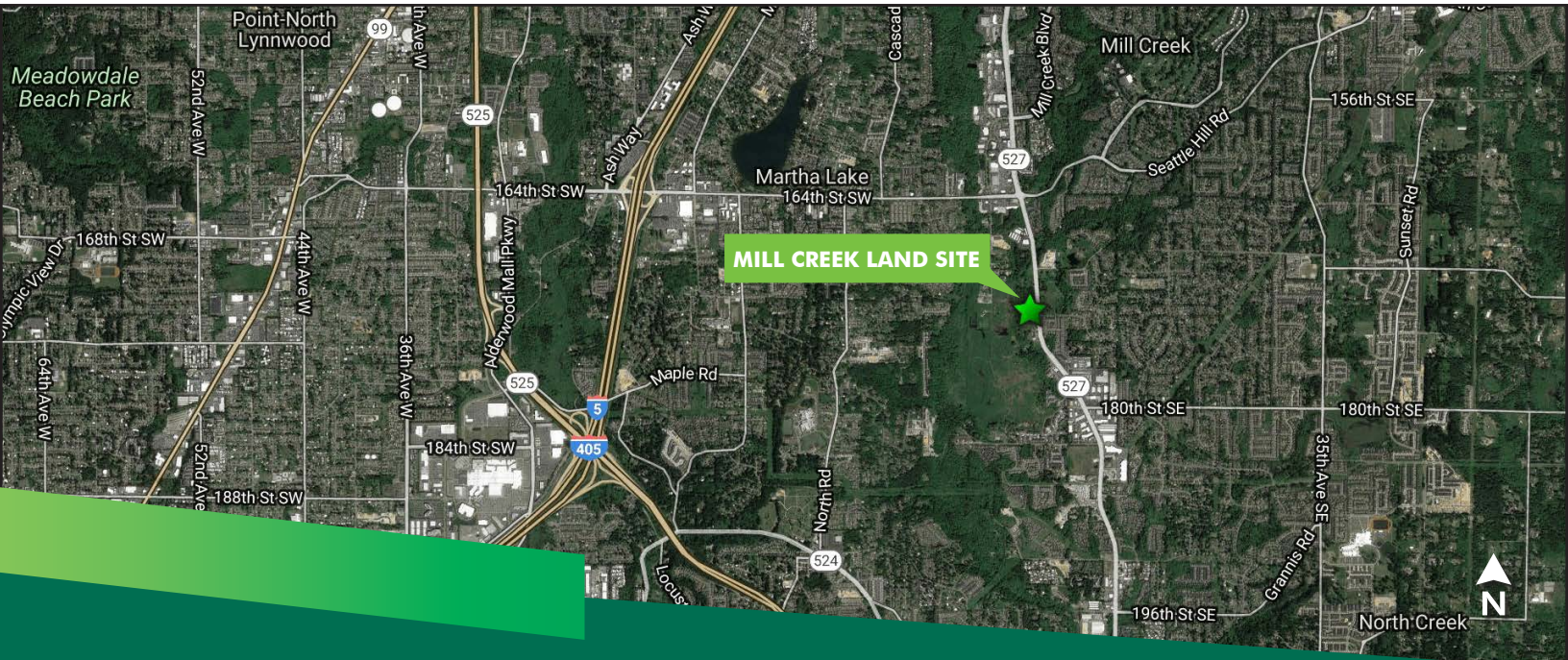
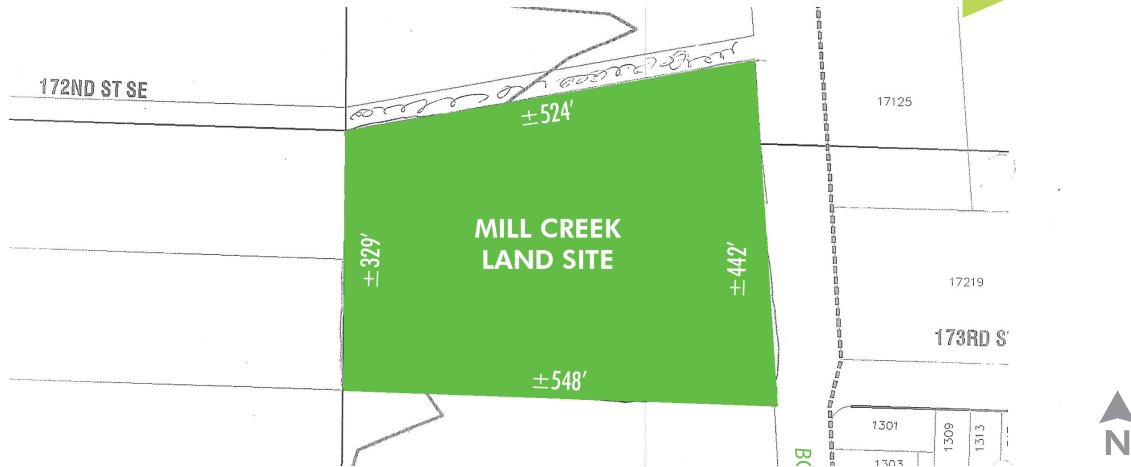


## PROPERTY FEATURES

- + 4.56 acres (approx. 1.42 acres usable)
- + Excellent access and visibility to Bothell-Everett Highway
- + Zoned: Business Park (BP), City of Mill Creek
- + Ability to accommodate a variety of uses
- + Conceptual plan created for two-story 35,000 SF building
- + Traffic Count: Over 30,000 vehicles per day
- + ±300,000 population within a five mile radius
- + \$120,110 average household income within a one mile radius
- + Parcel: 00602000000700



# PARCEL MAP



## PLEASE CONTACT:

### ERIK LARSON

First Vice President  
 +1 425 462 6954  
 erik.larson@cbre.com

### RIC BRANDT

Senior Vice President  
 +1 425 462 6901  
 ric.brandt@cbre.com

### JOHN BAUER

Senior Vice President  
 +1 425 462 6906  
 john.bauer@cbre.com

CBRE, Inc.  
 929 108 Avenue NE  
 Suite 700  
 Bellevue, WA 98004

© 2021 CBRE, Inc. All rights reserved. This information has been obtained from sources believed reliable, but has not been verified for accuracy or completeness. You should conduct a careful, independent investigation of the property and verify all information. Any reliance on this information is solely at your own risk. CBRE and the CBRE logo are service marks of CBRE, Inc. All other marks displayed on this document are the property of their respective owners, and the use of such logos does not imply any affiliation with or endorsement of CBRE. Photos herein are the property of their respective owners. Use of these images without the express written consent of the owner is prohibited. jg 9.8.21