

CLOSE-IN CENTRAL EASTSIDE PROFESSIONAL OFFICE SPACE

Mt. Everest Building 819 SE Morrison Street, Portland Oregon 97214

FOR LEASE



The Mt. Everest Building, at the east end of the Morrison Bridge, is located in the heart of an actively-redeveloping and creative-minded area of SE Portland aptly named the “Innovation Quadrant.” At 18,500 sq ft, The Everest Building offers 3 floors of high quality, professional office space with amenities to match: furnished lobby and ample seating, water feature, elevator, on-site guest parking, commuter showers and bike parking, conference room, and wi-fi. The building was remodeled sustainably “green,” with LED lighting and high-efficiency mechanical and plumbing systems. The location is 1 block down from the newly-redeveloped Goat Blocks, has a Walk Score of 92, a Bike Score of 95, and is extremely convenient to Downtown Portland, I-5 and I-84.

Tricia Anderson

tricia@northrimpdx.com | 503.525.1927



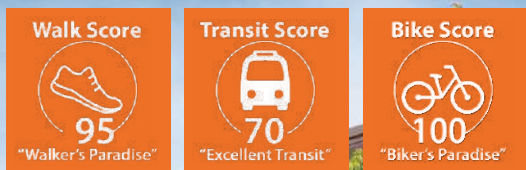
northrimpdx.com

819 SE Morrison Street, Ste 110, Portland OR 97214 | 503.525.1925
Matthew Schweitzer | matt@northrimpdx.com | 503.381.3134

CLOSE-IN CENTRAL EASTSIDE PROFESSIONAL OFFICE SPACE

Mt. Everest Building 819 SE Morrison Street, Portland OR 97214

FOR LEASE



KITCHEN #108

Property Details

- Furnished lobby with water feature
- Common area conference room
- Elevator serves all 4 levels
- ADA Accessible; restrooms on 3 floors
- High ceilings with exposed beams
- Guest wi-fi and 24/7 access system
- High-efficiency HVAC and LEDs

Commuter Amenities

- Guest parking on lower level
- Bike racks
- Private shower facility

Location Details

- Central Eastside Industrial District near restaurants, grocery, fitness, brew pubs, and bakeries
- At Tri-Met bus stop for Line 15
- Easy access I-5 and I-84
- Walking distance to downtown Portland via the Morrison Bridge

Demographics (within 1 mile for 2022)

- Estimated Population: 21,745
- Average Household Income: \$102,349
- Median Age: 38.59

Daily Traffic Count

(SE Morrison Street & SE 8th Avenue)

TOTAL: 7,656

Tricia Anderson

tricia@northrimpx.com | 503.525.1927



northrimpx.com

819 SE Morrison Street, Ste 110, Portland OR 97214 | 503.525.1925
Matthew Schweitzer | matt@northrimpx.com | 503.381.3134



FURNISHED LOBBY



WATER FEATURE AT THE BUILDING ENTRANCE



COMMON AREA CONFERENCE ROOM

CLOSE-IN CENTRAL EASTSIDE PROFESSIONAL OFFICE SPACE

Mt. Everest Building 819 SE Morrison Street, Portland OR 97214

Tricia Anderson

tricia@northrimpx.com | 503.525.1927



northrimpx.com

819 SE Morrison Street, Ste 110, Portland OR 97214 | 503.525.1925

Matthew Schweitzer | matt@northrimpx.com | 503.381.3134

FOR LEASE



SUITE #215



3D
Virtual Tour



<https://tinyurl.com/EverestSuite215>

SUITE #215



SUITE #103

CLOSE-IN CENTRAL EASTSIDE PROFESSIONAL OFFICE SPACE

Mt. Everest Building 819 SE Morrison Street, Portland OR 97214

FOR LEASE

Tricia Anderson

tricia@northrimpx.com | 503.525.1927



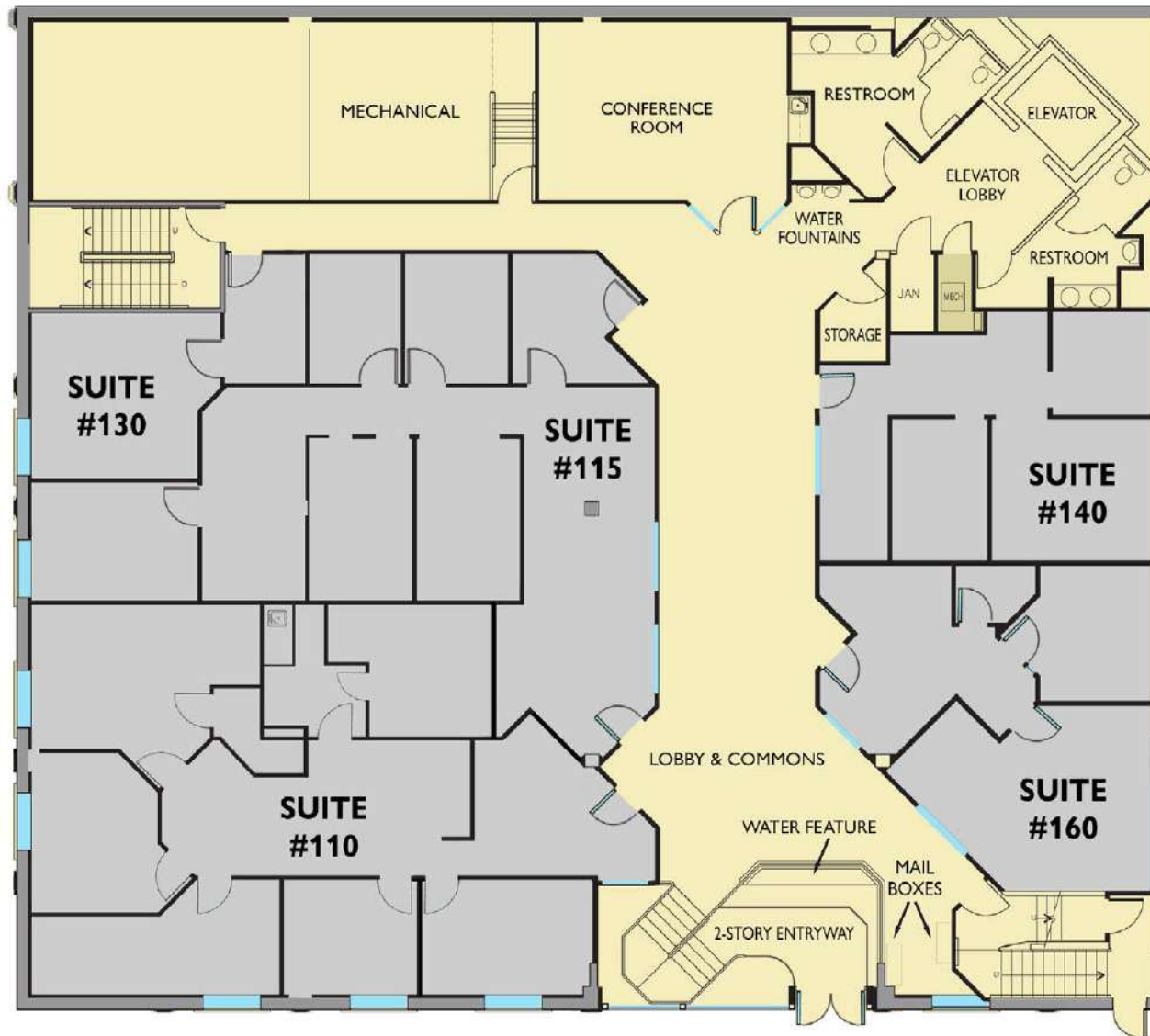
northrimpx.com

819 SE Morrison Street, Ste 110, Portland OR 97214 | 503.525.1925

Matthew Schweitzer | matt@northrimpx.com | 503.381.3134

FLOOR PLAN

1st Floor



CLOSE-IN CENTRAL EASTSIDE PROFESSIONAL OFFICE SPACE

Mt. Everest Building 819 SE Morrison Street, Portland OR 97214

FOR LEASE

Tricia Anderson

tricia@northrimpx.com | 503.525.1927



northrimpx.com

819 SE Morrison Street, Ste 110, Portland OR 97214 | 503.525.1925

Matthew Schweitzer | matt@northrimpx.com | 503.381.3134

FLOOR PLAN

2nd Floor



CLOSE-IN CENTRAL EASTSIDE PROFESSIONAL OFFICE SPACE

Mt. Everest Building 819 SE Morrison Street, Portland OR 97214

FOR LEASE

Tricia Anderson

tricia@northrimpx.com | 503.525.1927



northrimpx.com

819 SE Morrison Street, Ste 110, Portland OR 97214 | 503.525.1925

Matthew Schweitzer | matt@northrimpx.com | 503.381.3134

FLOOR PLAN

3rd Floor



CLOSE-IN CENTRAL EASTSIDE PROFESSIONAL OFFICE SPACE

Mt. Everest Building 819 SE Morrison Street, Portland OR 97214

FOR LEASE

Tricia Anderson

tricia@northrimpx.com | 503.525.1927



northrimpx.com

819 SE Morrison Street, Ste 110, Portland OR 97214 | 503.525.1925

Matthew Schweitzer | matt@northrimpx.com | 503.381.3134



CLOSE-IN CENTRAL EASTSIDE PROFESSIONAL OFFICE SPACE

Mt. Everest Building 819 SE Morrison Street, Portland OR 97214

FOR LEASE

Tricia Anderson
 tricia@northrimpx.com | 503.525.1927



northrimpx.com
 819 SE Morrison Street, Ste 110, Portland OR 97214 | 503.525.1925
 Matthew Schweitzer | matt@northrimpx.com | 503.381.3134