



MOODY SPRAGUE

2201 Eleventh Avenue South
Birmingham, AL 35226
(205) 933-7170
Fax (205) 937-1892

NOTES

PROJECT TITLE

LAKESHORE FOUNDATION RENOVATION

3800 Ridgeway Drive
Birmingham, Alabama

SHEET TITLE

FLOOR PLAN SCHEDULES

DATE

July 5, 1995
Nov 15, 1995 Revised

PROJECT NUMBER

9515

DRAWING NUMBER

A2

GENERAL NOTES

1. PROVIDE 3 1/2" THK. BATT INSULATION ABOVE CEILING AND ON INTERIOR WALLS IN THE FOLLOWING ROOMS: BOARD ROOM, OFFICE, MEN AND WOMEN TOILETS.

FINISH LEGEND

FLOOR	KEY CODE	MANUFACTURER / PRODUCT INFORMATION
1	CPT-1	MARLAND CARPET "BLOCKAGE" 77407 - COLOR: LA COURTOISE
3	CT-1	AMERICAN CLEAN "CRANK" TILE #306 OR POLAR WHITE
1	WB-1	WOOD BASE STAINED TO MATCH DESIGNER'S CONTROL SAMPLE
2	RB-1	ROPPA RUBBER BASE #98 "HONEY" - 4" COVER BASE
1	PT-1	DEVCO PAINT #2456 "SPRING BLOSSOM" - EGGSHELL FINISH
2	PT-2	DEVCO PAINT #2445 "WARM BEIGE" - EGGSHELL FINISH
3	PT-3	DEVCO PAINT #2446 "STARBUCK" - EGGSHELL FINISH
1	PGB-1	PAINTED GYPSUM BOARD W/ DEVCO PAINT #2414P "EGRET" - FLAT FINISH
2	ACT-1	ACCOUSTICAL TILE CEILING 2' X 2' X 5/8" LAY-IN REGULAR EDGE - (PESURET) PATTERN

- NOTES:
1. COUNTERS IN STORAGE 1, OFFICE 2, OFFICE 3, OFFICE 4 AND COFFEE TO RECEIVE PLASTIC LAMINATE PL-1 FORMICA #309 MATTE BLACK.
 2. ALL CABINET SURFACES EXCEPT COUNTERS TO RECEIVE BIRCH PLYWOOD WITH MAHOAGANY STAIN TO MATCH ARCHITECT'S SAMPLE.
 3. ALL WOOD DOORS TO HAVE BIRCH VENEER WITH MAHOAGANY STAIN TO MATCH ARCHITECT'S SAMPLE.
 4. ALL CROWN MOULDING, DOOR TRIM, INTERIOR DOOR FRAMES AND WOOD BASE TO RECEIVE PAINT PT-4 DEVCO #2414P "EGRET" - GLOSS FINISH.
 5. ALL INTERIOR FACES OF METAL WINDOWS TO RECEIVE PAINT PT-4 DEVCO #2414P "EGRET" - GLOSS FINISH.
 6. EXTERIOR FACES TO RECEIVE PAINT PT-5.
 7. EXTERIOR FACES OF METAL WINDOWS TO RECEIVE PAINT PT-6 BENJAMIN MOORE "BRONZE TONE".

TOILET ACCESSORY SCHEDULE

- BSR-8-825 SURFACE MOUNTED TOILET PAPER HOLDER FOR SINGLE WALL - MOUNT W/ 4" HOLE CL AT 21" ABOVE FIN FLOOR AND VERT CL AT 26" FROM REAR WALL
- BSR-8-826 1 1/4" DIA. STAINLESS STEEL GRAB BAR W/ CONCEALED MOUNTING SHAP FLANGE - MOUNT 34" FROM CL GRAB BAR TO FIN FLOOR AND 12" FROM CL GRAB BAR TO WALL NUMBER DENOTES LENGTH
- BSR-8-822 3/4" FL. CL SOAP DISPENSER W/ 4" SPOUT LENGTH-TYPE 304 ST. STEEL, POSITION B SPOUT LEANS VALVE REQUIRING NOT MORE THAN 5 LBS OF FORCE TO OPERATE-MOUNT 50 END OF SPOUT EXTENDS OVER INNER EDGE OF BOWL
- BSR-8-3693 12" X 31 1/2" PAPER TOWEL DISPENSER AND WASTE RECEPTACLE MOUNT TOP OF UNIT 51" ABOVE FIN FLOOR

SYMBOL LEGEND

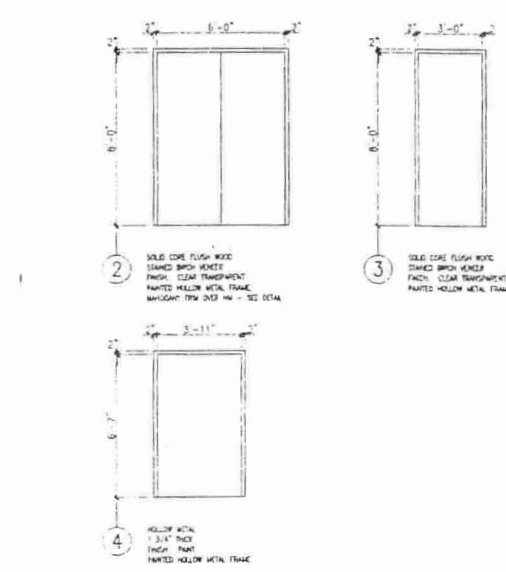
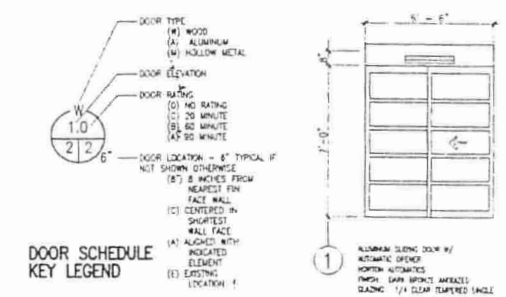
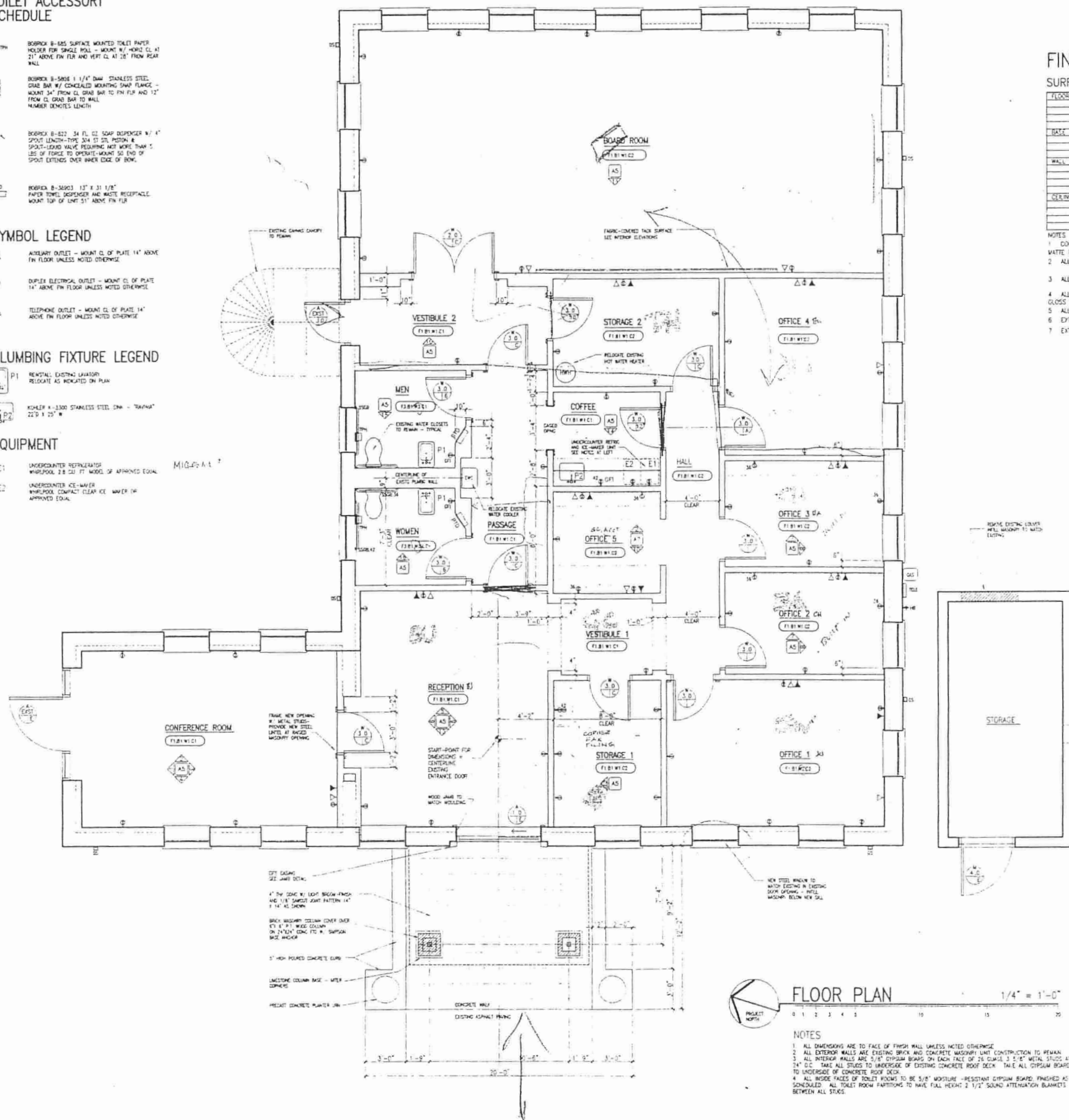
- ▲ AUXILIARY OUTLET - MOUNT CL OF PLATE 14" ABOVE FIN FLOOR UNLESS NOTED OTHERWISE
- ↑ DUPLEX ELECTRICAL OUTLET - MOUNT CL OF PLATE 14" ABOVE FIN FLOOR UNLESS NOTED OTHERWISE
- △ TELEPHONE OUTLET - MOUNT CL OF PLATE 14" ABOVE FIN FLOOR UNLESS NOTED OTHERWISE

PLUMBING FIXTURE LEGEND

- P1 REINSTALL EXISTING LAVATORY RELOCATE AS INDICATED ON PLAN
- P2 KOHLER #1300 STAINLESS STEEL SINK - "TRAY" 22 1/2" X 22"

EQUIPMENT

- E1 UNDERCOUNTER REFRIGERATOR WHIRLPOOL 2.8 CU FT MODEL OF APPROVED EQUAL
- E2 UNDERCOUNTER ICE-MAKER WHIRLPOOL COMPACT CLEAR ICE MAKER OF APPROVED EQUAL



DOOR SCHEDULE

HARDWARE NOTES:

MANUFACTURER: YALE
LEVER TRIM: MONROE
FINISH: US10 BRUSHED BRONZE
SUBMIT HARDWARE SCHEDULE TO ARCHITECT FOR APPROVAL.
COORDINATE MASTER KEY WITH OWNER'S EXISTING SYSTEM

FLOOR PLAN 1/4" = 1'-0"

NOTES:

1. ALL DIMENSIONS ARE TO FACE OF FINISH WALL UNLESS NOTED OTHERWISE.
2. ALL EXTERIOR WALLS ARE EXISTING BRICK AND CONCRETE MASONRY UNIT CONSTRUCTION TO REMAIN.
3. ALL INTERIOR WALLS ARE 5/8" GYPSUM BOARD ON EACH FACE OF 3 1/2" METAL STUDS AT 24" O.C. TAKE ALL STUDS TO UNDERFACE OF EXISTING CONCRETE ROOF DECK. TAKE ALL GYPSUM BOARD TO UNDERFACE OF CONCRETE ROOF DECK.
4. ALL INSIDE FACES OF TOILET ROOMS TO BE 5/8" MOISTURE-RESISTANT GYPSUM BOARD FINISHED AS SCHEDULED. ALL TOILET ROOM PARTITIONS TO HAVE FULL HEIGHT 2 1/2" SOUND ATTENUATION BANNETS BETWEEN ALL STUDS.