

Your Very Own Office Building

1920 ARAPAHOE AVENUE | BOULDER, CO 80302

Size: 1,736 SF

Price: \$22.50 NNN (\$15.83)

Available Now

Detached garage also available | 320 SF | \$595/Month

ALL EYES ON YOU

We're sorry for staring, but it's hard to miss this striking standalone building just blocks from downtown Boulder. So, if you have a business that craves the gaze of countless customers or clients, then direct your peepers here. It's an ideal setup for retail or office, and this place is a looker if we've ever seen one. It's got kind of an art deco, cottage-cool thing going on, and the interior exposed brick is an eye-catching bonus.

PROPERTY HIGHLIGHTS

- Newly remodeled standalone building
- Great visibility and signage on busy Arapahoe
- Student Central: near CU, Boulder High & Naropa
- 8 onsite parking spaces
- Detached garage available at additional cost



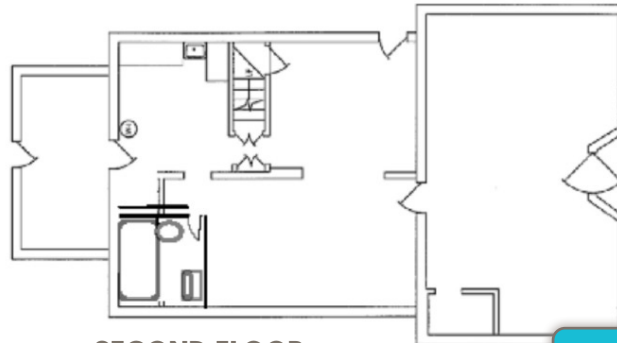
[CLICK HERE](#)
for virtual tour



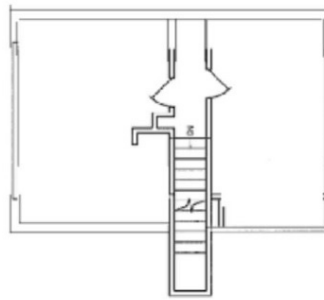
LEARN MORE ABOUT THIS PROPERTY
[WeAreMarket.com](https://www.WeAreMarket.com)

DISCLAIMER: The information contained herein has been obtained from sources believed to be reliable. While we do not doubt its accuracy, we have not verified it and make no guarantee, warranty or representation about its accuracy or responsibility to independently confirm its accuracy and completeness.

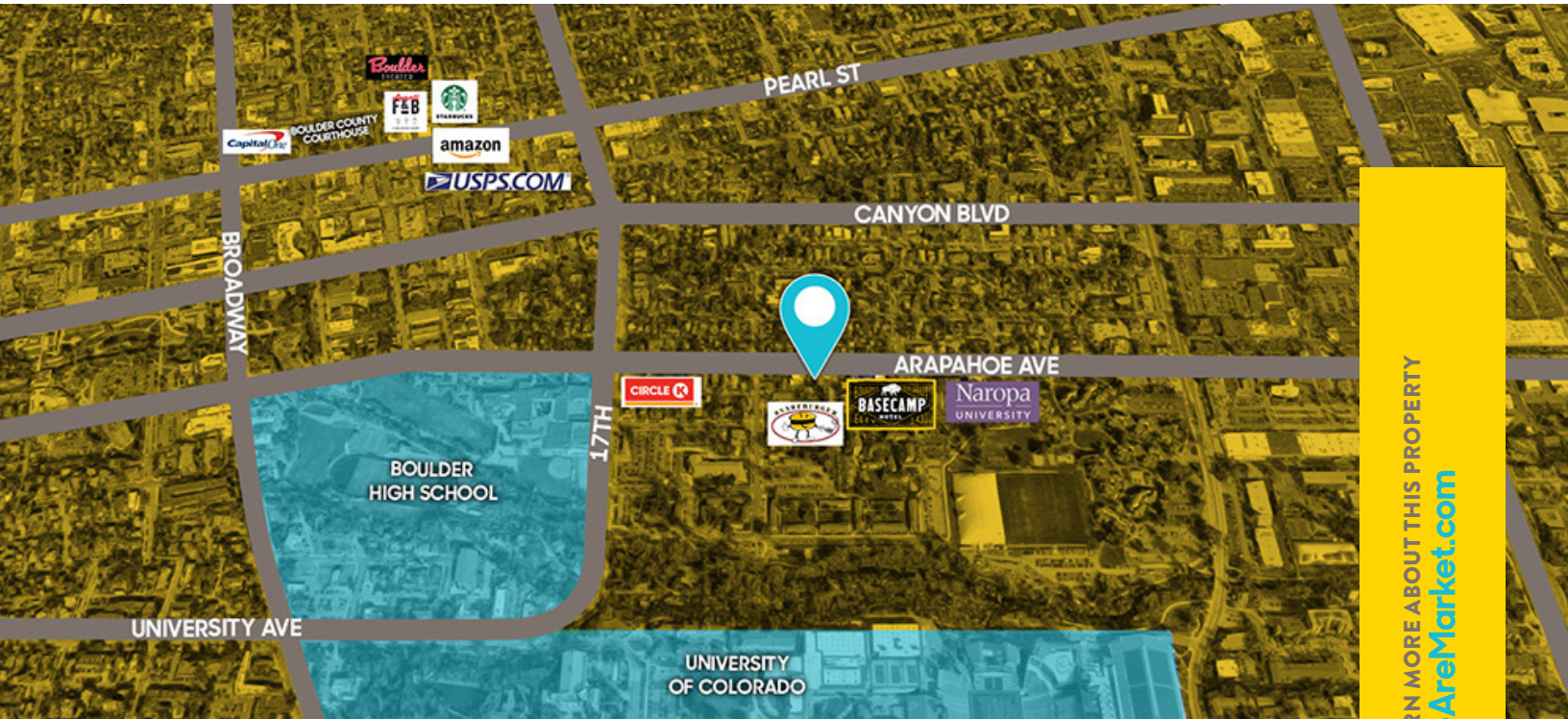
FIRST FLOOR



SECOND FLOOR



[CLICK HERE](#)
for virtual tour



LEARN MORE ABOUT THIS PROPERTY
[WeAreMarket.com](https://www.WeAreMarket.com)

TODD WALSH, CCIM

303 444 5040 Todd@WeAreMarket.com

LAURA FRENKEL

303 444 4994 Laura@WeAreMarket.com

