

Edison Technology Park

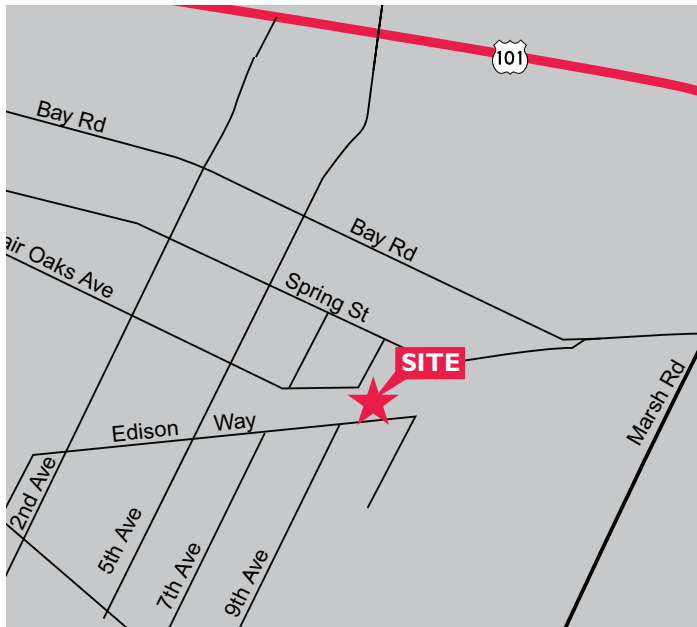
3475 - 3517 Edison Way

Menlo Park, CA



±1,200 - ±4,170 Square Foot Suites Available

As exclusive agent(s), we are pleased to offer the following space:



- ◆ Industrial R&D Space Suitable for Biotech, Life Science, R&D Labs and Other Related Uses
- ◆ Kitchen/Sink
- ◆ 22' High Ceilings; Sprinklered
- ◆ ADA Accessible Bathrooms
- ◆ LED Lighting and Skylights
- ◆ Fume Hoods Available
- ◆ HVAC
- ◆ Roll Up Doors
- ◆ Available Now
- ◆ Flexible Lease Terms
- ◆ Asking: \$3.00/sf NNN
(Low NNN Charges - \$0.15/sf)

Juan de Leon 650.572.6573 Juan.deLeon@ngkf.com CA RE License #01383120

John Weatherby 650.358.5269 jweatherby@ngkf.com CA RE License #00640295



2950 South Delaware Street, Suite 125, San Mateo, CA 94403

www.ngkf.com

The distributor of this communication is performing acts for which a real estate license is required. The information contained herein has been obtained from sources deemed reliable but has not been verified and no guarantee, warranty or representation, either express or implied, is made with respect to such information. Terms of sale or lease and availability are subject to change or withdrawal without notice.

18-0537 • 09/20

Edison Technology Park

3475 - 3517 Edison Way

Menlo Park, CA

Site Plan



3475-D/E Edison Way
±4,170 SF

3475-J Edison Way
±1,650 SF

3517-E Edison Way
±1,200 SF

3517-D Edison Way
±1,500 SF



Juan de Leon 650.572.6573 Juan.deLeon@ngkf.com CA RE License #01383120

John Weatherby 650.358.5269 jweatherby@ngkf.com CA RE License #00640295

2950 South Delaware Street, Suite 125, San Mateo, CA 94403

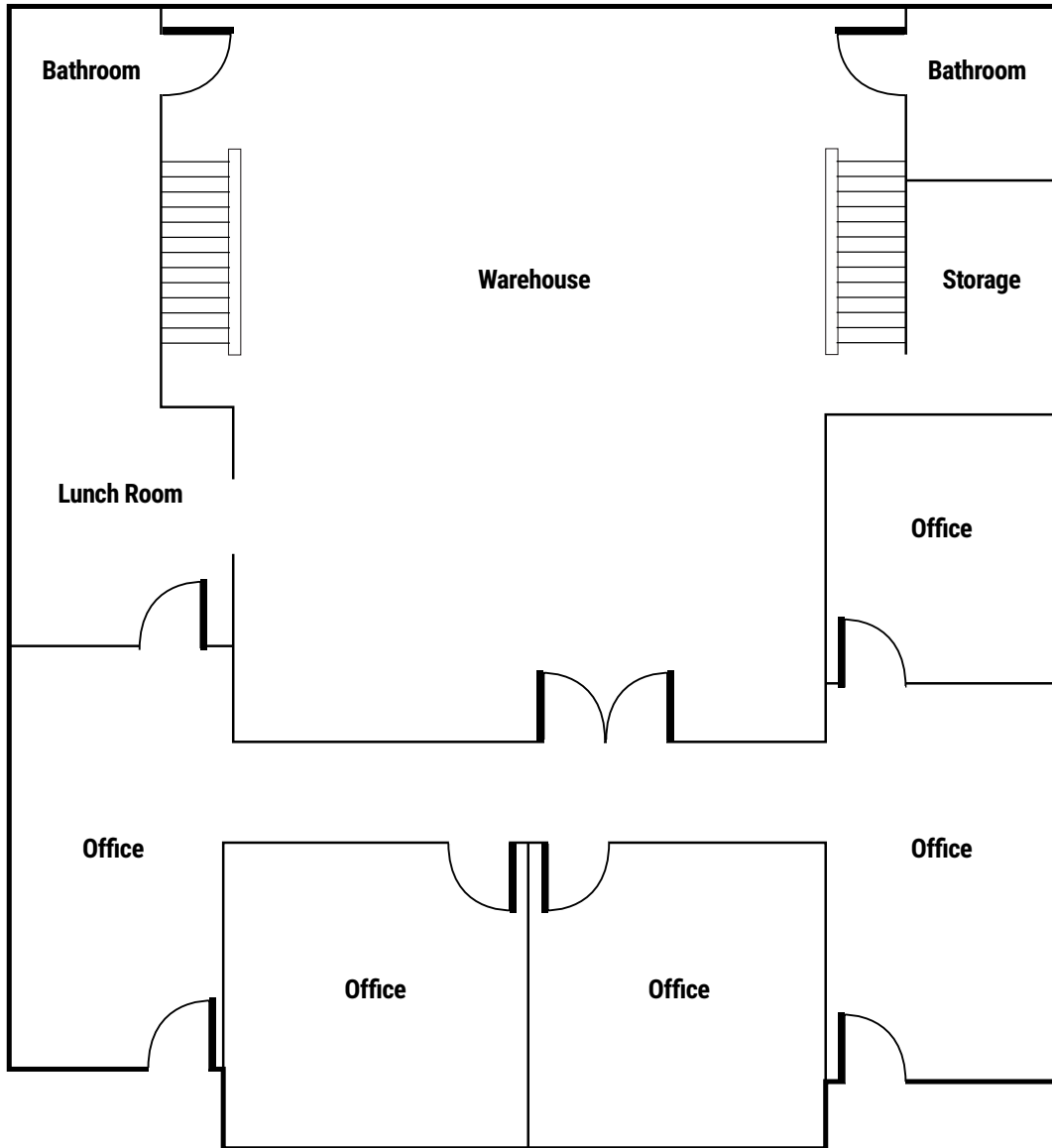
www.ngkf.com

Edison Technology Park

3475 - 3517 Edison Way

Menlo Park, CA

3475-D/E Edison Way: ±4,170 Square Feet



Juan de Leon 650.572.6573 Juan.deLeon@ngkf.com CA RE License #01383120

John Weatherby 650.358.5269 jweatherby@ngkf.com CA RE License #00640295



2950 South Delaware Street, Suite 125, San Mateo, CA 94403

www.ngkf.com

The distributor of this communication is performing acts for which a real estate license is required. The information contained herein has been obtained from sources deemed reliable but has not been verified and no guarantee, warranty or representation, either express or implied, is made with respect to such information. Terms of sale or lease and availability are subject to change or withdrawal without notice.

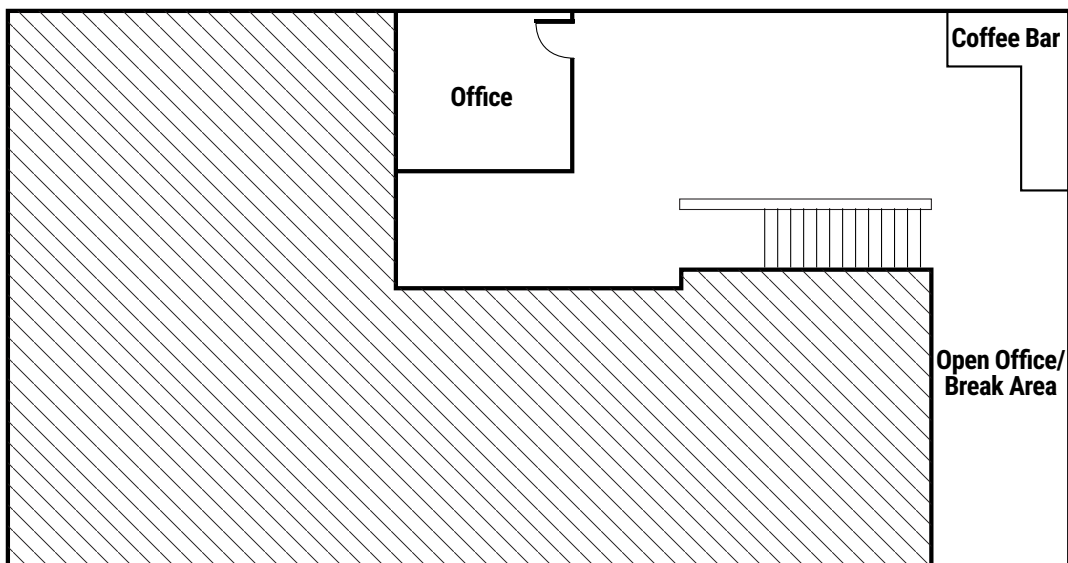
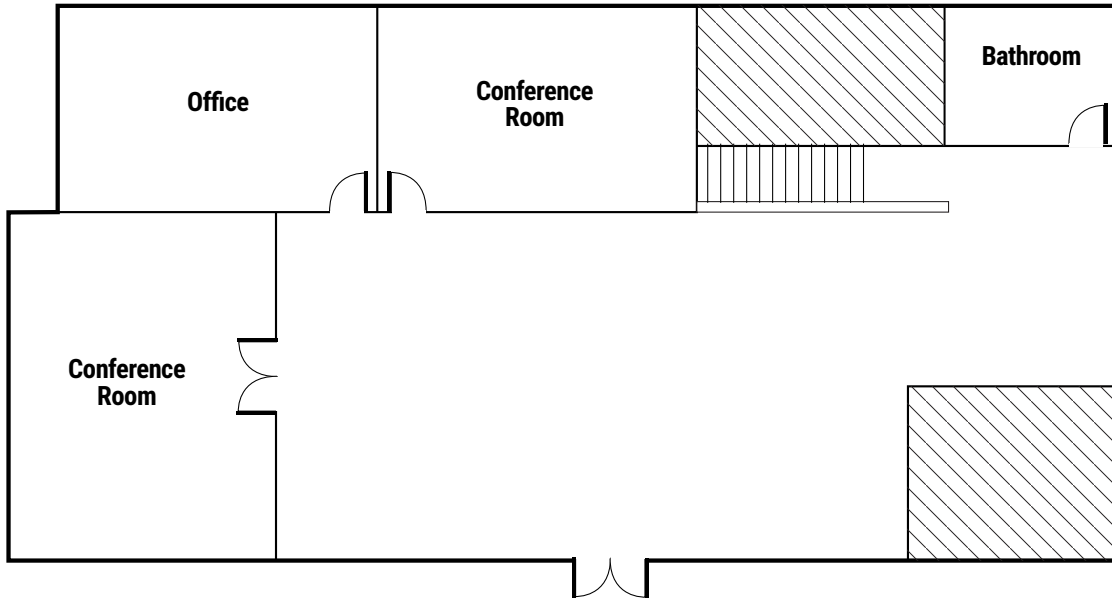
18-0537 • 09/20

Edison Technology Park

3475 - 3517 Edison Way

Menlo Park, CA

3475-J Edison Way: ±1,650 Square Feet



Juan de Leon 650.572.6573 Juan.deLeon@ngkf.com CA RE License #01383120

John Weatherby 650.358.5269 jweatherby@ngkf.com CA RE License #00640295



2950 South Delaware Street, Suite 125, San Mateo, CA 94403

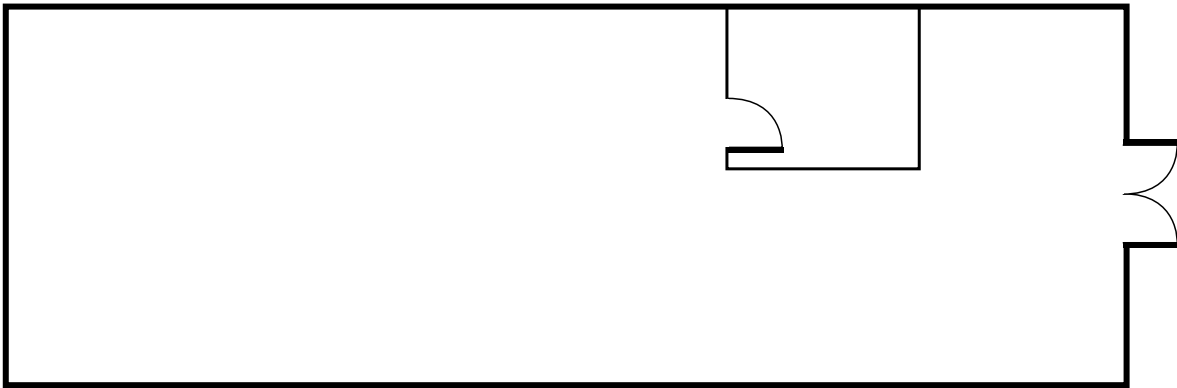
www.ngkf.com

Edison Technology Park

3475 - 3517 Edison Way

Menlo Park, CA

3517-E Edison Way: ±1,200 Square Feet



Juan de Leon 650.572.6573 Juan.deLeon@ngkf.com CA RE License #01383120

John Weatherby 650.358.5269 jweatherby@ngkf.com CA RE License #00640295



2950 South Delaware Street, Suite 125, San Mateo, CA 94403

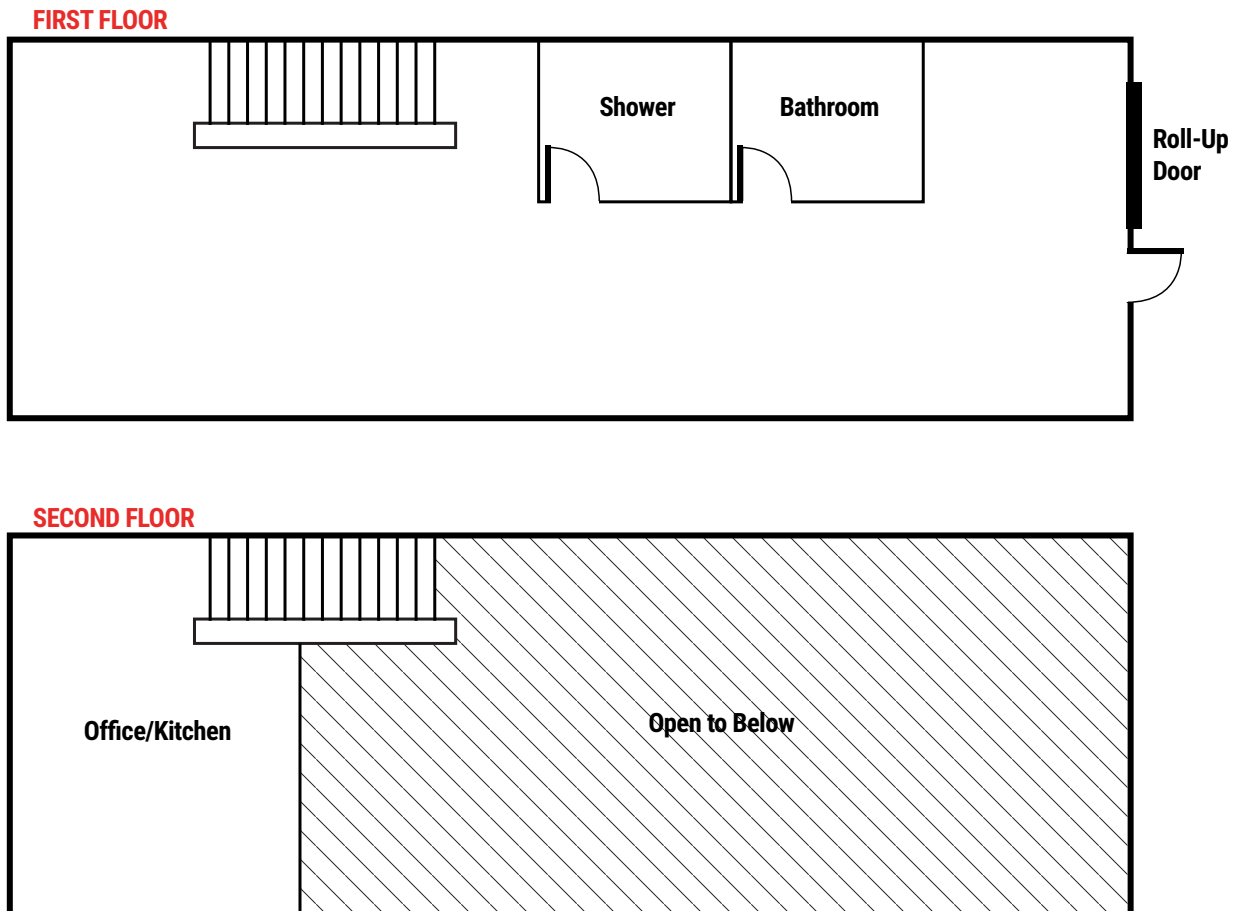
www.ngkf.com

Edison Technology Park

3475 - 3517 Edison Way

Menlo Park, CA

3517-D Edison Way: ±1,500 Square Feet



Juan de Leon 650.572.6573 Juan.deLeon@ngkf.com CA RE License #01383120

John Weatherby 650.358.5269 jweatherby@ngkf.com CA RE License #00640295

2950 South Delaware Street, Suite 125, San Mateo, CA 94403

www.ngkf.com

The distributor of this communication is performing acts for which a real estate license is required. The information contained herein has been obtained from sources deemed reliable but has not been verified and no guarantee, warranty or representation, either express or implied, is made with respect to such information. Terms of sale or lease and availability are subject to change or withdrawal without notice.

18-0537 • 09/20