

# Dierbergs Town Center



*Development*

*For More Information Contact:*

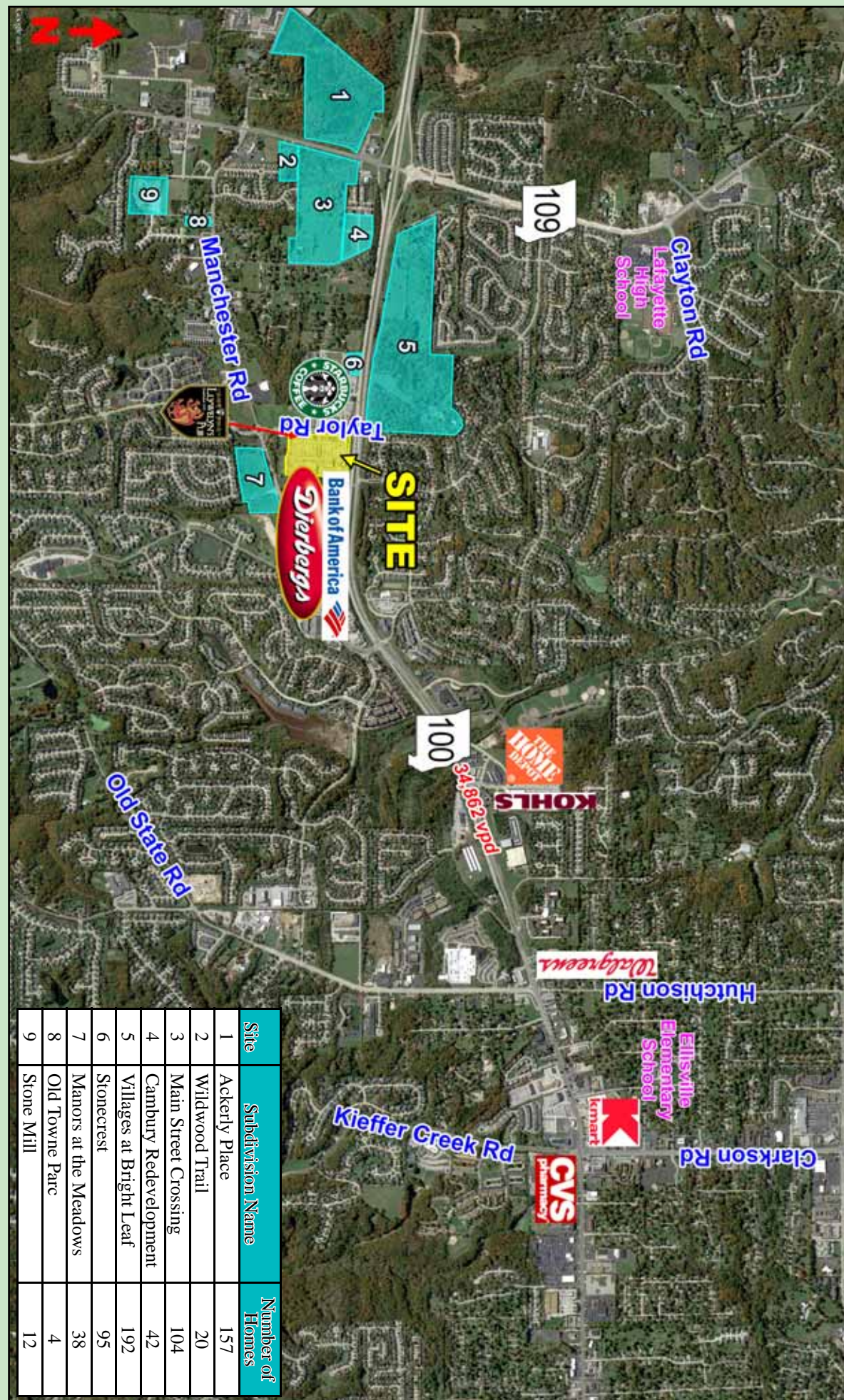


314-991-8900

**Weller Meyer (x226)**  
wmeyer@caplaco.com

11850 Studt Avenue  
P.O. Box 419121  
St. Louis, Missouri 63141

Fax 314-991-2474



11850 Studt Avenue  
P.O. Box 419121  
St. Louis, Missouri 63141  
Telephone: (314)991-8900  
Fax: (314)991-2474

The information contained herein was obtained from sources deemed reliable, however, Capitol Realty Group makes no guarantees as to the completeness or accuracy thereof. This information is subject to error, omission, change in price or conditions, prior sale or lease, or withdrawal without notice.

## Demographics

	1-Mile	3-Mile	5-Mile
<b>2020 Estimated Population</b>	12,234	37,492	87,622
<b>2020 Estimated Households</b>	4,277	13,176	31,474
<b>2020 Avg. Household Income</b>	\$138,430	\$157,446	\$159,431



<i>Tenant</i>	<i>Size (sf)</i>
1 Massage Envy	2,266
2 Town Center Dental	1,600
3 Papa Murphy's	1,600
4 Subway	1,600
5 Available	1,524
6 Pacific Beach	2,058
7 Land of Smile - Thai	1,200
8 Color Nail	1,200
9 Available	3,583
10 Ince Orthodontics	1,599
11 Mathnasium	1,600
12 Don Gosen Agency	1,322
Dierbergs	73,947
13 West Oak Cleaners	1,093
14 Great Clips	981
15 Travel Tyme	981
16 Optimal Health Chiropractic	1,200
17 Main Street Creamery	1,600
18 Sunny Street Cafe'	4,202
19 Available	6,547
20 Edward Jones	1,011
21 Anytime Fitness	5,536
22 ReMax	1,590
23 Premier Martial Arts	1,600
24 Happy Go Lucky Outfitters	1,677
25 One Lucky Mutt	1,680
26 El Maguey	4,964
27 Clarkson Eyecare	2,172
28 St. Louis Bread Company	5,639
Bank of America	4,700

