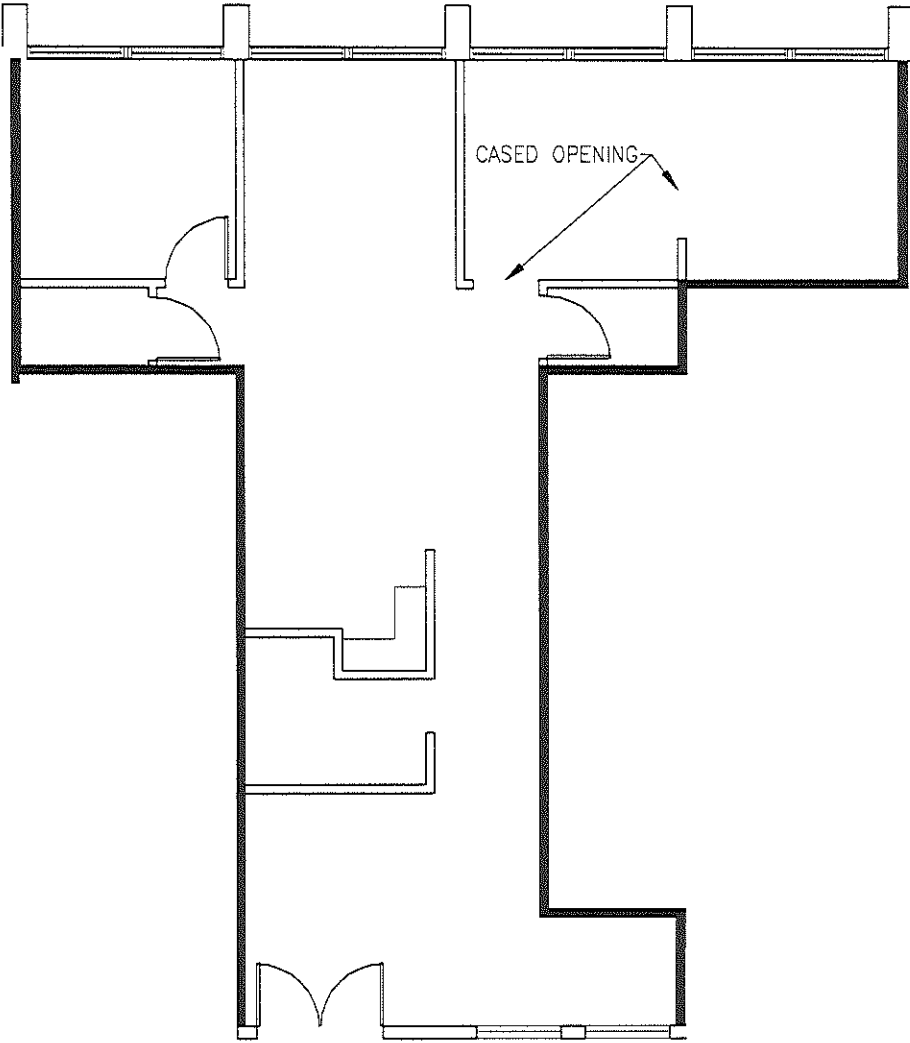
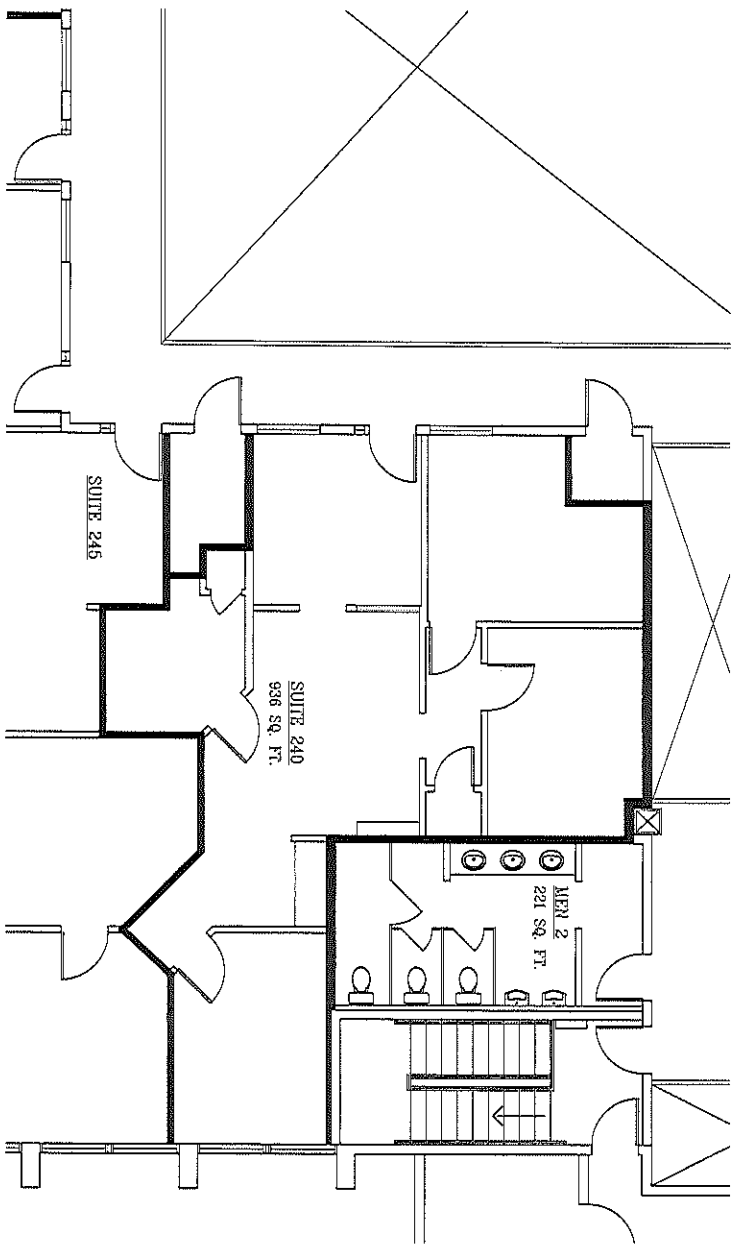



Suite 230  
1,218 rsf





# NEW FLOOR PLAN

1  
SCALE: 1/8"=1'-0"

SCALE: AS SHOWN	FILE NAME: 00012\AUDIT\plan04.r
DATE: 19 April 2013	
 <p>STEVEN J. PINCAGNAN ARCHITECTS, LTD. A PROFESSIONAL CORPORATION 123 S. PIERCE ST. NEW ORLEANS, LA. 70119 (504) 486-5744 E-MAIL: <a href="mailto:finaganstevenj@bellsouth.net">finaganstevenj@bellsouth.net</a></p>	

SUITES 240  
824 ELMWOOD PARKWAY  
2ND FLOOR

This drawing is the property of Steven J. Pincagnan Architects, Ltd. It is not to be reproduced, stored in a retrieval system, or transmitted in any form or by any means, electronic, mechanical, photocopying, recording, or by any information storage and retrieval system, without the prior written permission of Steven J. Pincagnan Architects, Ltd.

LINE OF OVERHEAD  
EXTERIOR LANDING

UP

WOMEN  
208 SQ. FT.

SUITE 110  
1682 SQ. FT.  
(110 & 118)

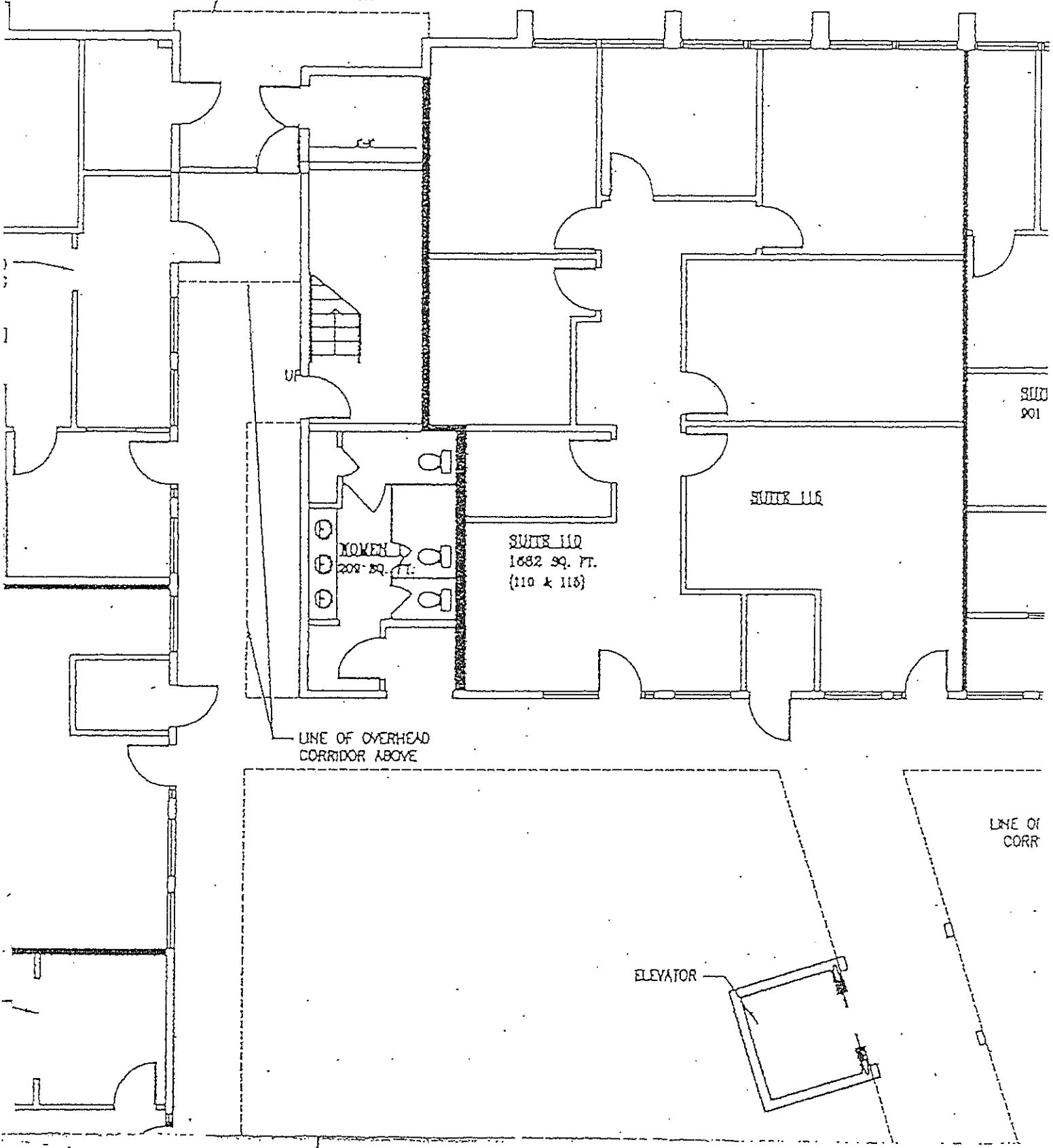
SUITE 116

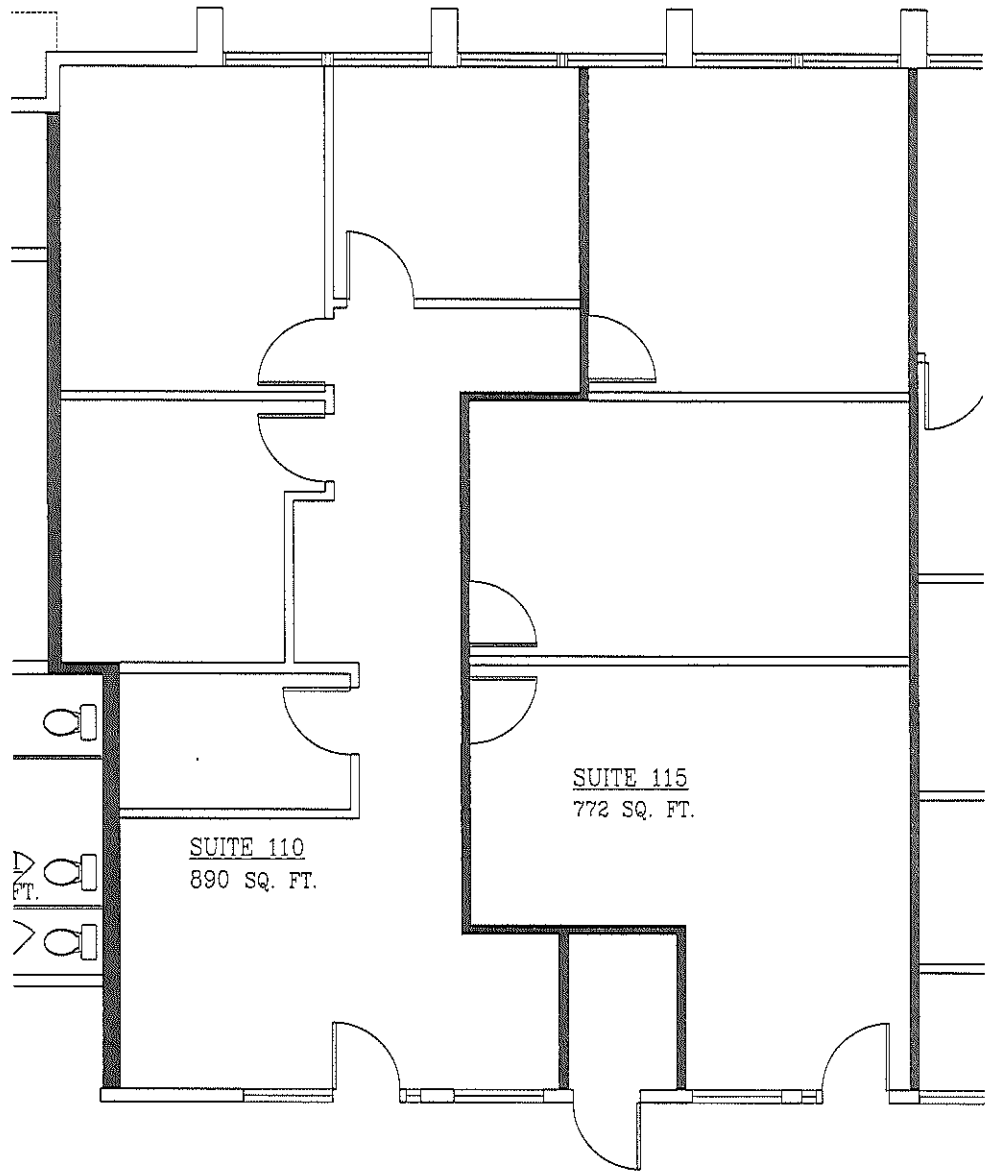
SUITE  
108

LINE OF OVERHEAD  
CORRIDOR ABOVE


LINE OF  
CORR

ELEVATOR





1 PARTIAL FIRST FLOOR PLAN  
SCALE: 3/16"=1'-0"

SCALE: AS SHOWN	FILE NAME: 09012\1STFLRplan02.B
DATE: 20 Feb. 2013	
 STEVEN J. FINEGAN ARCHITECTS, LTD. A PROFESSIONAL CORPORATION 123 S. PIERCE ST. NEW ORLEANS, LA. 70119 (504) 486-5744 E-MAIL: stevefinegan@nccoxmail.com	
LOUISIANA CREDIT UNION CTR. 824 ELMWOOD PARKWAY HARAHAN, LA	SHEET NO. OF SHEETS A1-a
<small>This drawing is the property of STEVEN J. FINEGAN ARCHITECTS, LTD. It is not to be reproduced, copied or altered in whole or in part. It is not to be used for any purpose without the approval of STEVEN J. FINEGAN ARCHITECTS, LTD. and is to be returned on request.</small>	

