

120 CHURCH STREET



SPACE DETAILS

LOCATION

West block between Park Place and Murray Street

APPROXIMATE SIZE

Ground Floor 3,838 SF

CEILING HEIGHT

Ground Floor 14 FT

FRONTAGE

40 FT on Church Street

TERM

Long term

POSSESSION

Arranged

SITE STATUS

Currently Schnipper's Quality Kitchen

NEIGHBORS

Equinox Fitness Club, Whole Foods Market, Rosa Mexicano, Le Pain Quotidien, Salad Box, Starbucks, and Bed Bath & Beyond

COMMENTS

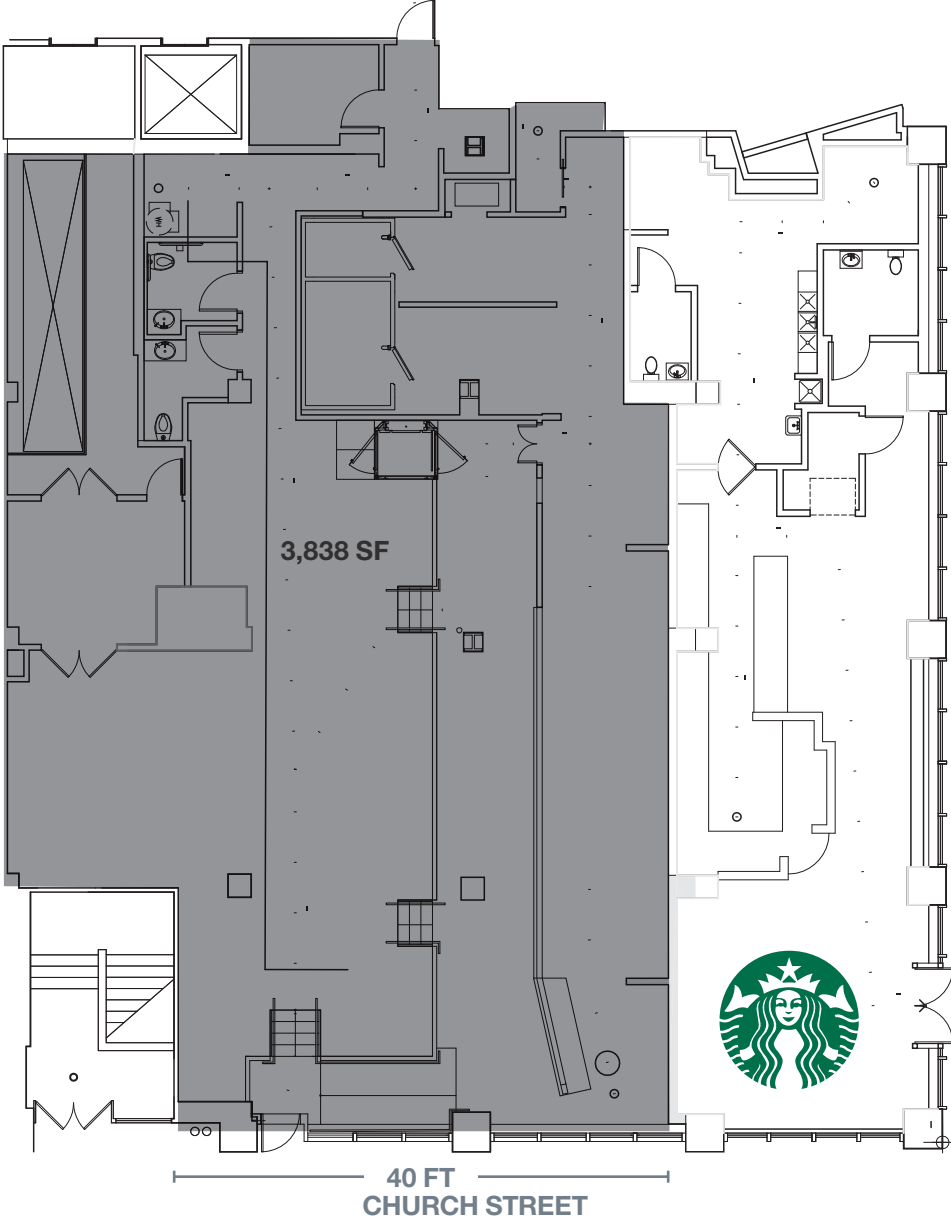
The space can be delivered with flooring at grade

Directly in front of the Park place subway stop servicing the **A C E 2 3**

Two blocks from the PATH station with 12.5 million annual ridership

Steps from the World Trade Center, Brookfield Place, Century 21, 9/11 Memorial & Museum, and City Hall

GROUND FLOOR



AREA RETAIL



CONTACT EXCLUSIVE AGENTS

ROSS BERKOWITZ
212.916.3388
ross.berkowitz@ngkf.com

ARIEL SCHUSTER
212.331.0132
ariel.schuster@ngkf.com

JAKE SIEGEL
212.916.2928
jake.siegel@ngkf.com

ANDREW STERN
212.351.9353
andrew.stern@ngkf.com



NGKF.COM