

# Prime Commercial Property for Redevelopment



**DUEMELANDS**  
COMMERCIAL REAL ESTATE

1800 & 1806 N 12<sup>th</sup> Street - Bismarck, North Dakota



**Sale Price: \$3,500,000**

## Property Information

- ◆ 4.69 acres Total (204,386 sf)
  - ◇ 3.66 acres - 1800 12th Street
  - ◇ 1.03 acres - 1806 12th Street
- ◆ Monument sign visible from State Street
- ◆ Zoned CG - Commercial
- ◆ 62,150 sf building - Former Kelly Inn

## Location Information

- ◆ Direct access to State Street (30,080 vpd)
- ◆ Easy access to:
  - ◇ Divide Avenue (11,365 vpd)
  - ◇ I-94 (13,135 vpd)
- ◆ Located near new First International Bank building, restaurants, hotels, & retail



**Duemelands Commercial Real Estate**  
301 E. Thayer Avenue - Bismarck, ND 58501  
Phone: (701) 221-2222  
[www.duemelands.com](http://www.duemelands.com)

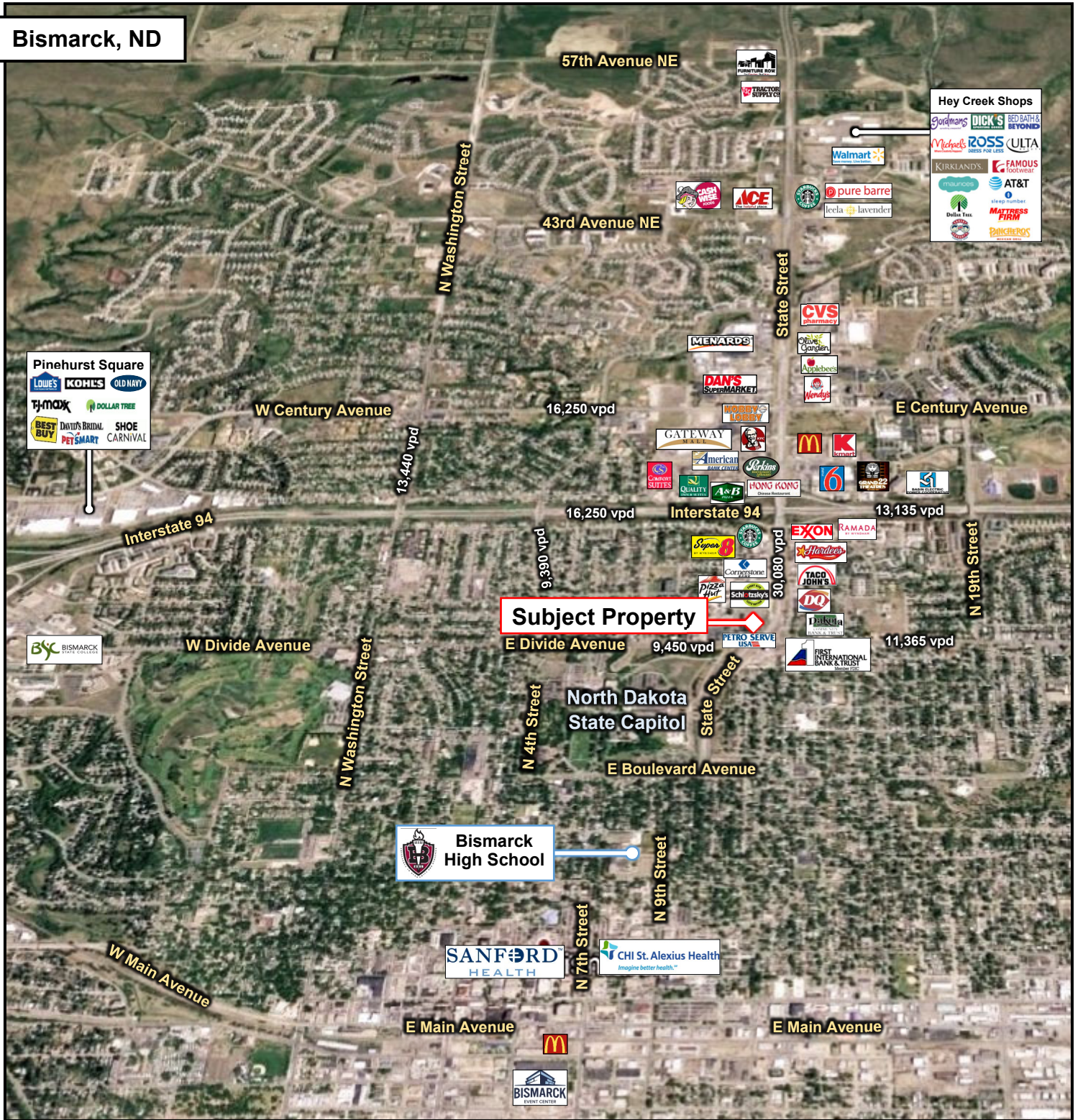
**Jill Duemeland, CCIM**  
CEO & President  
Phone: 701.221.9033  
[jjill@duemelands.com](mailto:jjill@duemelands.com)

**April Eide, CCIM**  
Vice President of Brokerage  
Direct: 701.223.5863  
[april@duemelands.com](mailto:april@duemelands.com)

# Location Aerial

Commercial Property

Bismarck, ND



**Duemelands Commercial Real Estate**  
 301 E. Thayer Avenue - Bismarck, ND 58501  
 Phone: (701) 221-2222  
[www.duemelands.com](http://www.duemelands.com)

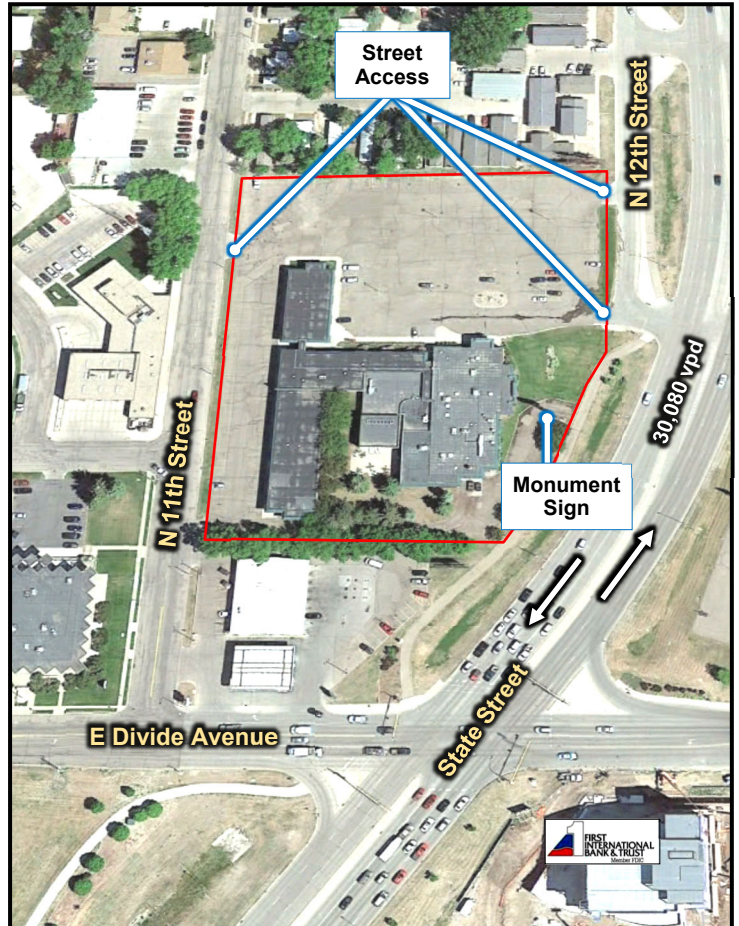
**Jill Duemeland, CCIM**  
 CEO & President  
 Phone: 701.221.9033  
[jill@duemelands.com](mailto:jill@duemelands.com)

**April Eide, CCIM**  
 Vice President of Brokerage  
 Direct: 701.223.5863  
[april@duemelands.com](mailto:april@duemelands.com)

The data and information contained herein, while not guaranteed, have been obtained from sources we believe to be reliable. We make no warranties, whether expressed or implied, as to the accuracy or completeness of the information. Any reference to square footage and monetary values are considered approximations. Buyer or Lessee should conduct their own analysis and rely on their own investigative results.

# Building Pictures

Commercial Property



**Duemelands Commercial Real Estate**  
301 E. Thayer Avenue - Bismarck, ND 58501  
Phone: (701) 221-2222  
[www.duemelands.com](http://www.duemelands.com)

**Jill Duemeland, CCIM**  
CEO & President  
Phone: 701.221.9033  
[jill@duemelands.com](mailto:jill@duemelands.com)

**April Eide, CCIM**  
Vice President of Brokerage  
Direct: 701.223.5863  
[april@duemelands.com](mailto:april@duemelands.com)