

# FOR LEASE

Providence Health & Services  
Medical Center Building  
820 S. McClellan Street  
Spokane, WA 99204



**ALL LEASES ARE FULL SERVICE**

**LOCATED ON THE PROVIDENCE  
SACRED HEART CAMPUS**

**SPOKANE'S LARGEST**



## AVAILABLE SPACE

SUITE	RSF	RENT
414	791	\$22.00/RSF

## PROPERTY INFORMATION

- Adjacent Parking available for Doctors, Staff, and Patients
- Located on the Providence Sacred Heart Campus
- Tenant Improvement Allowances available

**For more information about this property,  
please visit:**  
[www.khmedicaloffice.com](http://www.khmedicaloffice.com)

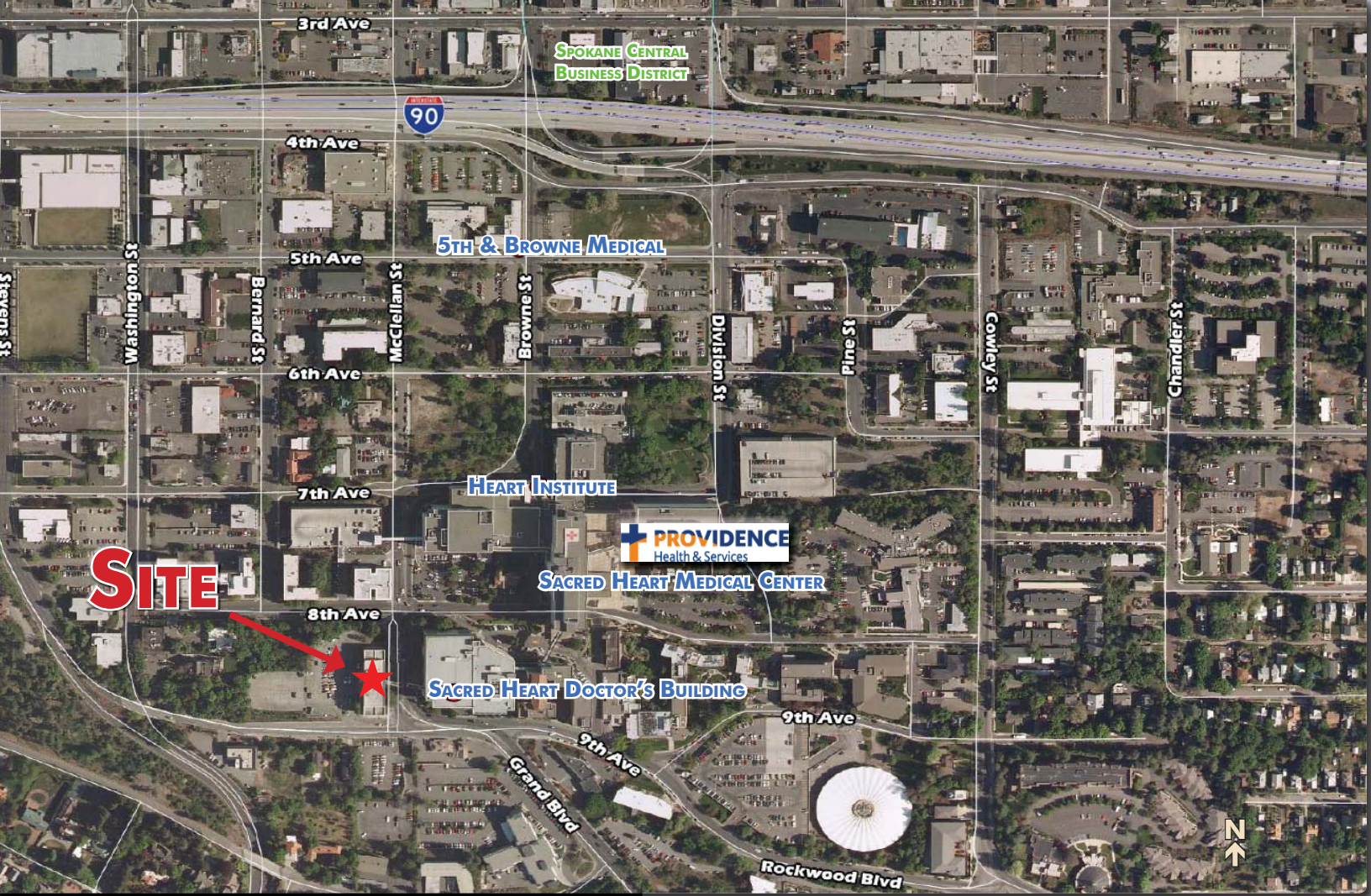
Mann Jones  
509.755.7526 or [mann.jones@khco.com](mailto:mann.jones@khco.com)

Ron Horton  
509.755.7551 or [ron.horton@khco.com](mailto:ron.horton@khco.com)

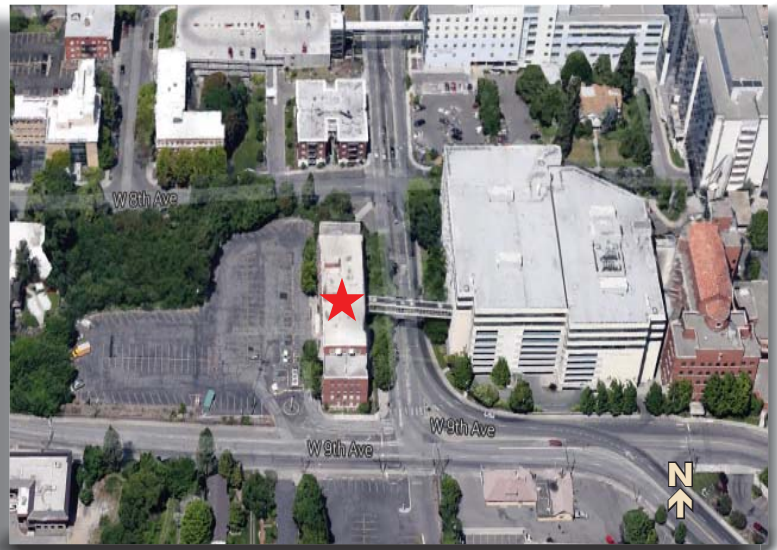
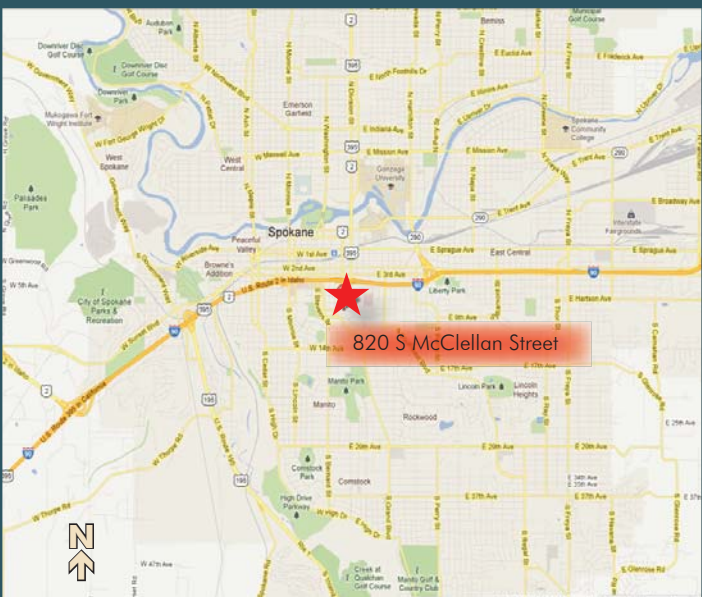


509.838.6541  
[khco.com](http://khco.com)

No warranty or representation, expressed or implied, is made by Kiemle & Hagood Company, its agents or its employees as to the accuracy of the information contained herein. All information furnished is from sources deemed reliable and submitted subject to errors, omissions, change of terms and conditions, prior sale, lease or financing, or withdrawal without notice. No one should rely solely on the above information, but instead should conduct their own investigation to independently satisfy themselves.



## AERIAL VIEWS & MAP



Mann Jones  
 509.755.7526 or [mann.jones@khco.com](mailto:mann.jones@khco.com)

Ron Horton  
 509.755.7551 or [ron.horton@khco.com](mailto:ron.horton@khco.com)

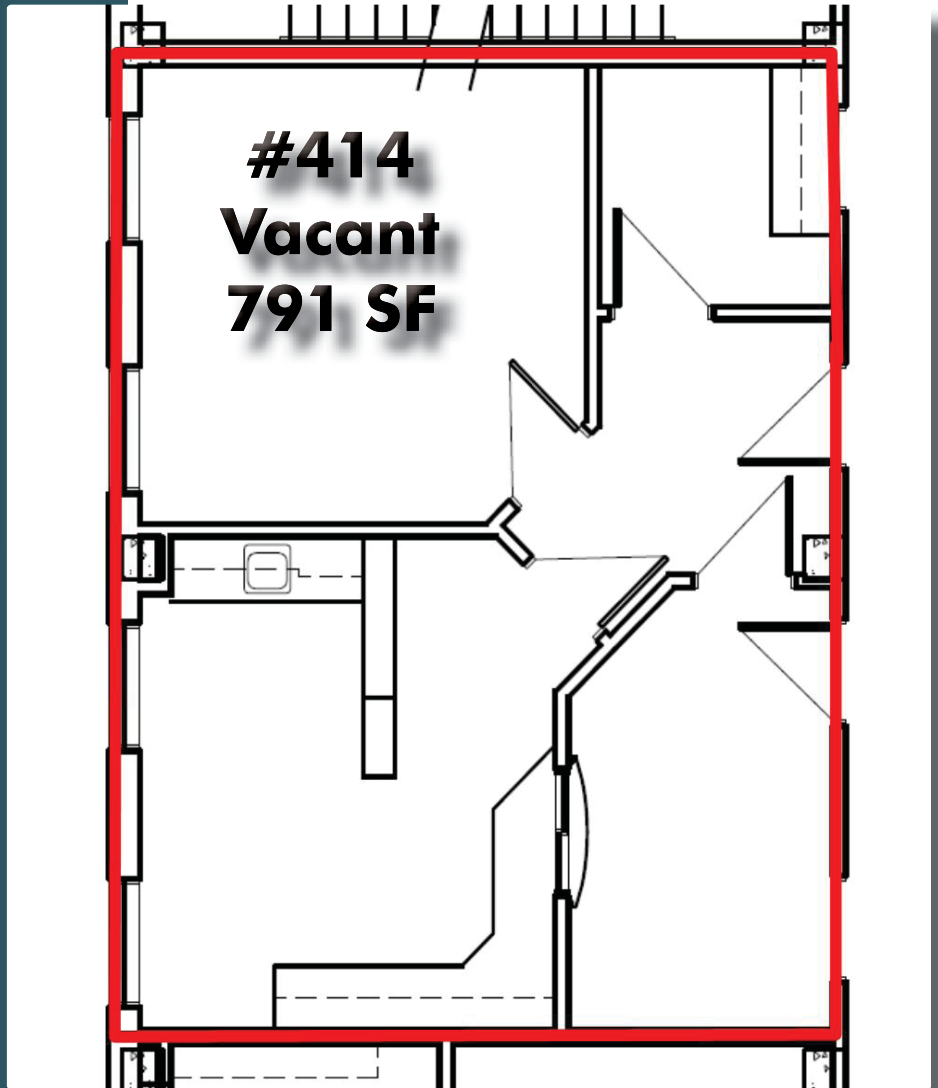
**KIEMLE &  
 HAGOOD  
 COMPANY**

 509.838.6541  
 khco.com

No warranty or representation, expressed or implied, is made by Kiemle & Hagood Company, its agents or its employees as to the accuracy of the information contained herein. All information furnished is from sources deemed reliable and submitted subject to errors, omissions, change of terms and conditions, prior sale, lease or financing, or withdrawal without notice. No one should rely solely on the above information, but instead should conduct their own investigation to independently satisfy themselves.

# FOR LEASE


Providence Health & Services  
Medical Center Building  
820 S. McClellan Street  
Spokane, WA 99204



Mann Jones  
509.755.7526 or mann.jones@khco.com

Ron Horton  
509.755.7551 or ron.horton@khco.com

**KIEMLE &  
HAGOOD  
COMPANY**

 509.838.6541

khco.com

No warranty or representation, expressed or implied, is made by Kiemle & Hagood Company, its agents or its employees as to the accuracy of the information contained herein. All information furnished is from sources deemed reliable and submitted subject to errors, omissions, change of terms and conditions, prior sale, lease or financing, or withdrawal without notice. No one should rely solely on the above information, but instead should conduct their own investigation to independently satisfy themselves.