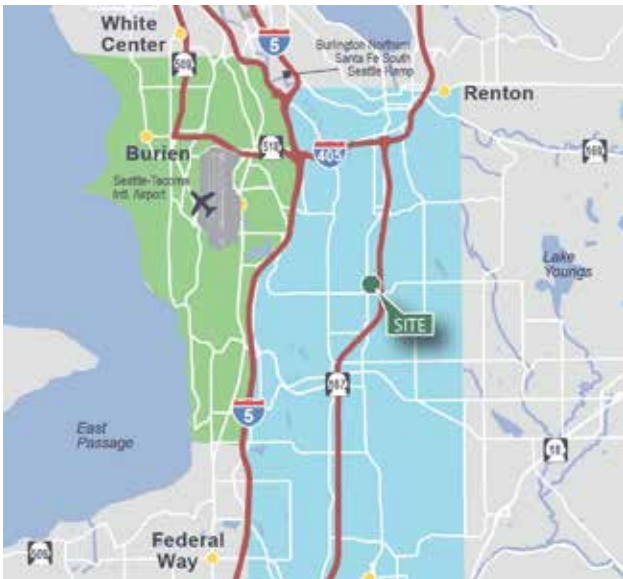


Northwest Corporate Park - Kent

Kent, Washington



functional and economical

Northwest Corporate Park - Kent offers a unique opportunity for flexible growth in buildings that have 24' - 30' clear height, rail access, and excellent access to all freeways.

location

- 50 yard line location
- Great access to Hwy-167, I-5 and I-405
- www.nwcpkent.com

Kidder Mathews
Matt Wood, SIOR
mwood@kiddermathews.com
ph 206.248.7306
fax 206.248.7342
12886 Interurban Ave S
Seattle, WA 98168

Kidder Mathews
Thad Mallory, SIOR
tmallory@kiddermathews.com
ph 206.248.7338
fax 206.248.7342
12886 Interurban Ave S
Seattle, WA 98168

Kidder Mathews
Tony Miltenberger, SIOR
tonym@kiddermathews.com
ph 206.248.7307
fax 206.248.7342
12886 Interurban Ave S
Seattle, WA 98168

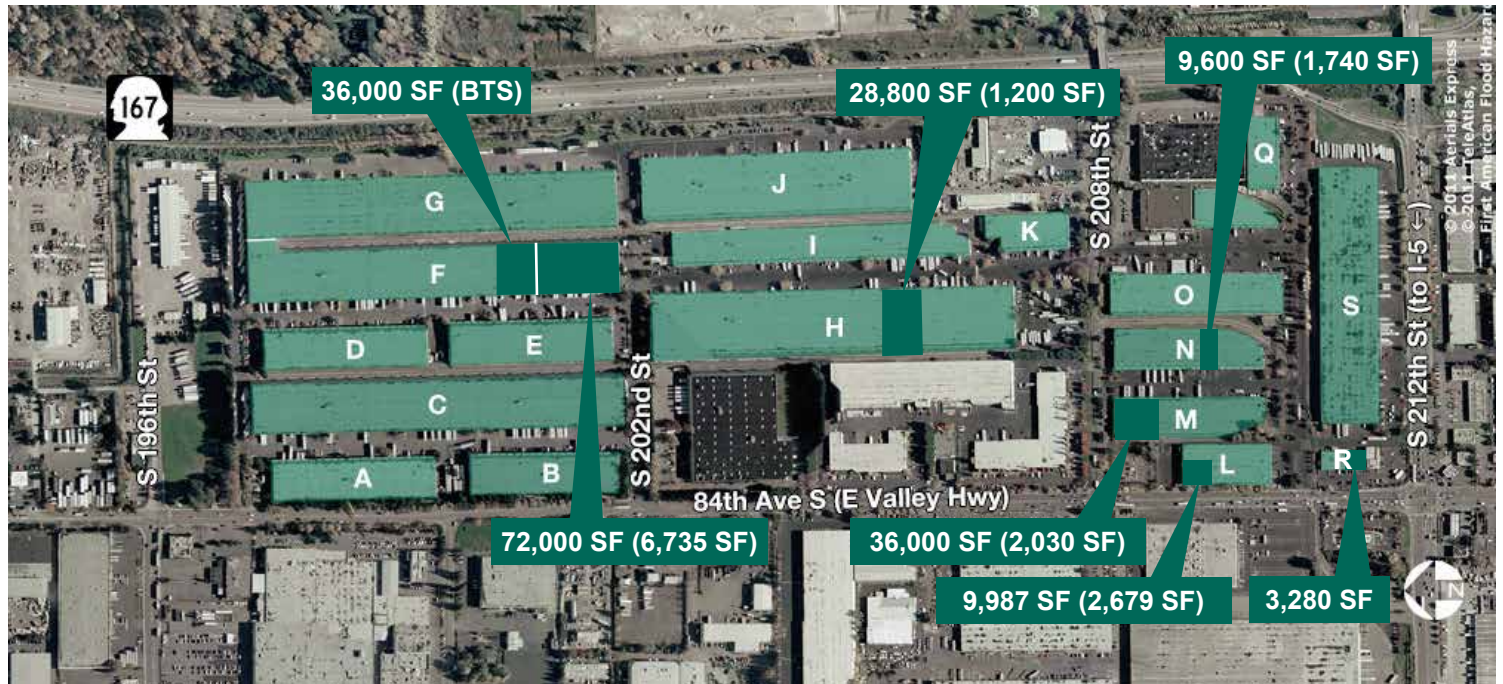
Prologis
Rick Kolpa
rkolpa@prologis.com
ph 206.414.7610
fax 206.414.7601
12720 Gateway Dr, Ste 110
Tukwila, WA 98168

Northwest Corporate Park - Kent

Kent, Washington



ADDRESS	SF (OFFICE)	LOADING	CLEAR HEIGHT	COMMENTS
20024 87th Ave S Kent, WA	108,000 (6,735)	24 DH 2 GL	24'	Divisible to 36,000 SF or 72,000 SF. 60' x 25' typical column spacing. Rail served. End cap space. Available now.
20024 87th Ave S Kent, WA	72,000 (6,735)	15 DH 1 GL	24'	60' x 25' typical column spacing. Rail served. End cap space. Available now.
8427 S 208th St Kent, WA	36,000 (2,030)	12 DH	22'	60' x 20' typical column spacing. Rail served. Potentially divisible to 27,000 SF (2,030 SF office) & 9,000 SF. Available now.
20008 87th Ave S Kent, WA	36,000 (BTS)	9 DH 1 GL	24'	60' x 25' typical column spacing. Rail served. End cap space. Available now.
20413 87th Ave S Kent, WA	28,800 (1,200)	4 DH	30'	60' x 25' typical column spacing. Rail served. Available now.
20834 84th Ave S Kent, WA	9,987 (2,679)	2 DH	24'	60' x 25' typical column spacing. Available February 1, 2016
8459 S 208th St Kent, WA	9,600 (1,740)	1 DH 1 GL	22'	60' x 20' typical column spacing. Rail served. Available now.
21040 84th Ave S Kent, WA	3,280	3 GL	N/A	End cap space. Visibility from 212th & 84th St S. Available now.



Kidder Mathews
 Matt Wood, SIOR
 mwood@kiddermathews.com
 ph 206.248.7306
 fax 206.248.7342
 12886 Interurban Ave S
 Seattle, WA 98168

Kidder Mathews
 Thad Mallory, SIOR
 tmallory@kiddermathews.com
 ph 206.248.7338
 fax 206.248.7342
 12886 Interurban Ave S
 Seattle, WA 98168

Kidder Mathews
 Tony Miltenberger, SIOR
 tonym@kiddermathews.com
 ph 206.248.7307
 fax 206.248.7342
 12886 Interurban Ave S
 Seattle, WA 98168

Prologis
 Rick Kolpa
 rkolpa@prologis.com
 ph 206.414.7610
 fax 206.414.7601
 12720 Gateway Dr, Ste 110
 Tukwila, WA 98168