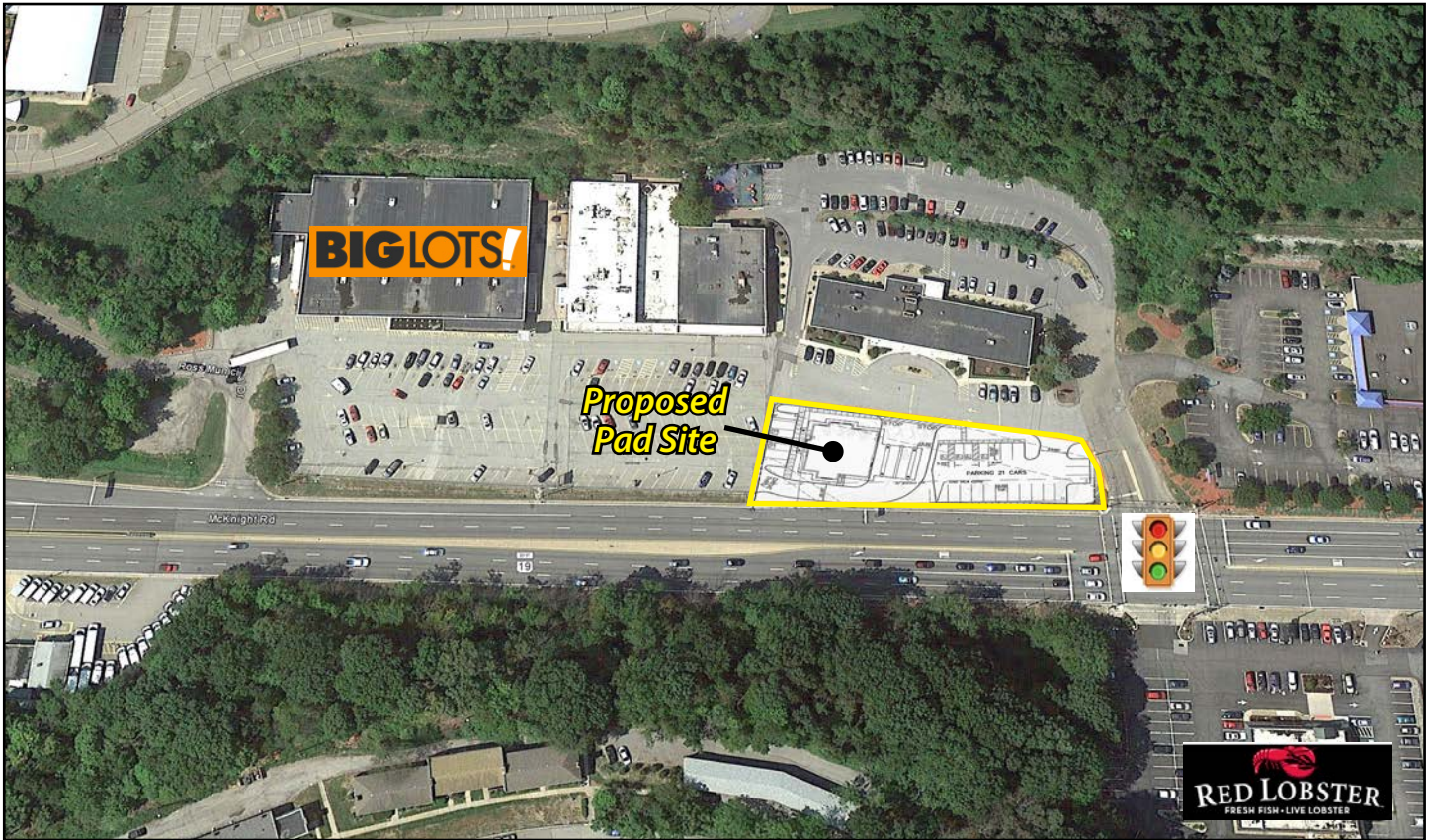


## Pad Site Available - Northland Center

4721 McKnight Road, Pittsburgh, PA 15237



### Pad Site Available

28,000 SF (.65 acre) - Pad site could accommodate potential drive-thru capabilities (shown with proposed bank and drive-thru lanes)

### Property Highlights

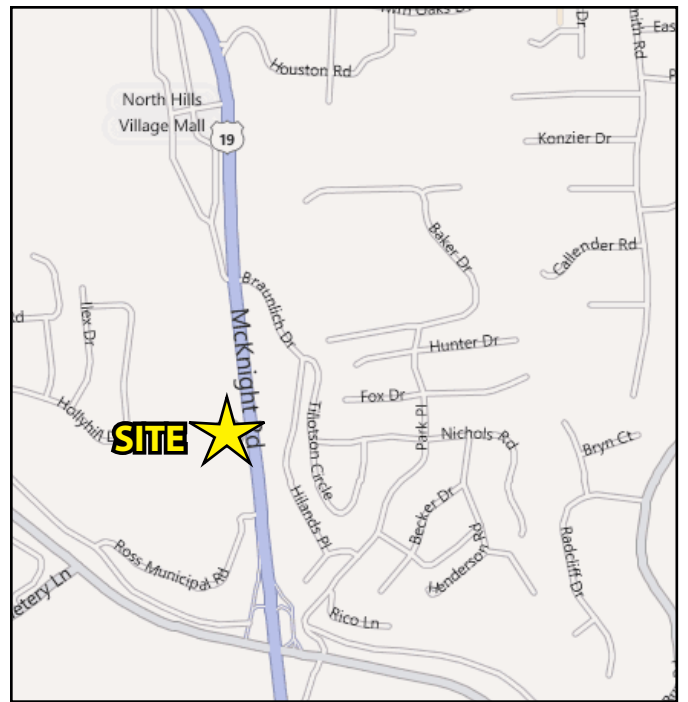
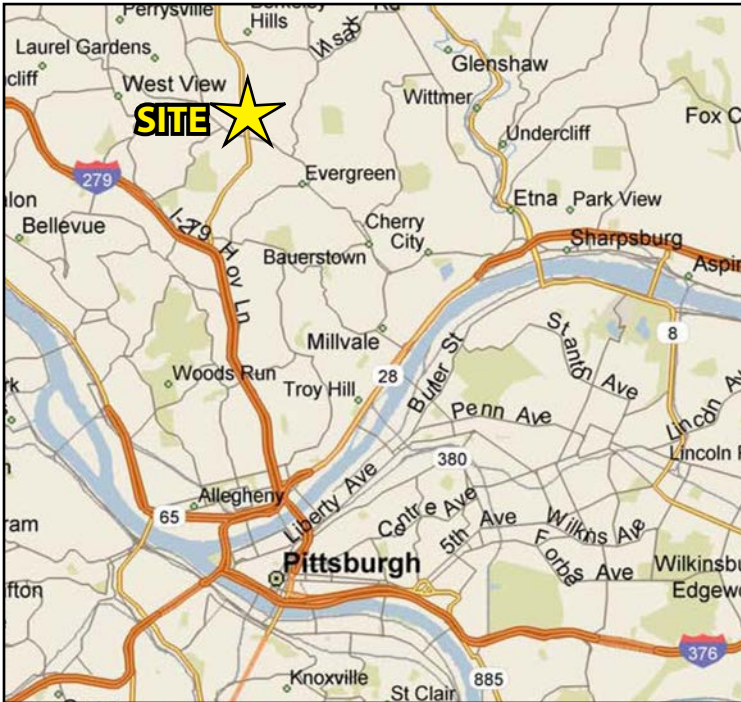
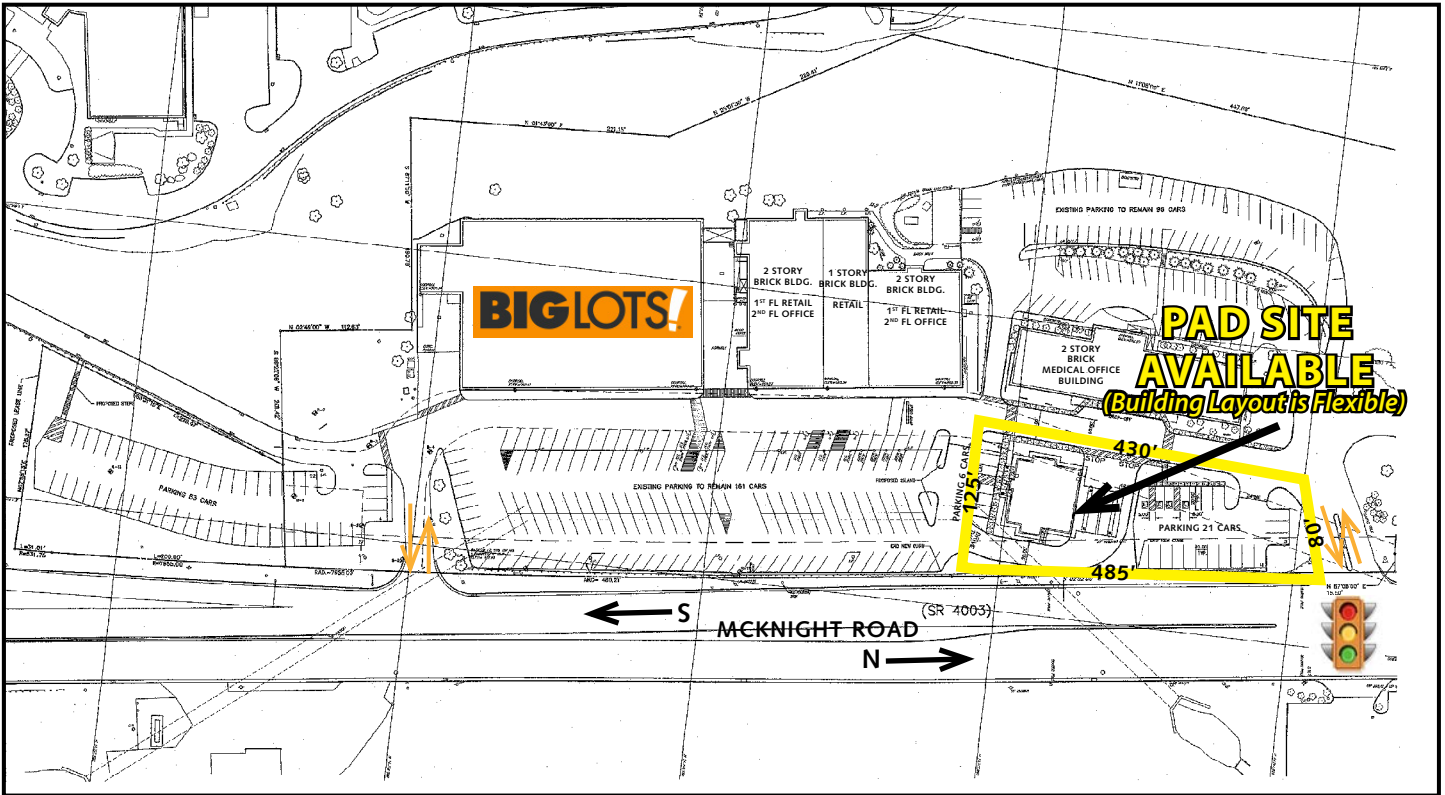
- Great North Hills location along McKnight Road
- Close proximity to Interstate 279 ramps
- Controlled access on McKnight Road

#### AVERAGE DAILY TRAFFIC

McKnight Road	43,183
---------------	--------

#### DEMOGRAPHICS

	3-MILES	5-MILES
Population	79,153	215,089
Avg. HH Income	\$74,226	\$66,927



For more information please contact:

**Arthur J. DiDonato, Jr.**  
Senior Vice President, Retail Brokerage

**Oxford Realty Services, Inc.**  
412.261.0200, ext 3436  
adidonato@oxfordrealtyservices.com

# OXFORD

REALTY SERVICES, INC.

2545 Railroad Street - Suite 300  
Pittsburgh, PA 15222  
www.oxfordrealtyservices.com

Although all information furnished regarding property for sale, rental or financing is from sources deemed reliable, such information has not been verified, and no express representation is made nor is any to be implied as to the accuracy thereof, and it is submitted subject to errors, omissions, change of price, rental or other conditions, prior sale, lease or financing, or withdrawal without notice. Rental terms and all dimensions are approximate and specifications are subject to change without notice. Oxford Realty Services, Inc., an independent real estate services company.