



MAIN LINE HEALTH MOB

135 South Bryn Mawr Avenue, Bryn Mawr, PA 19010

\$25.50 NNN



BUILDING HIGHLIGHTS

- Prime location on Main Line Health's Campus
- State-of-the-art medical office building offering great efficiencies
- Anchored by an Ambulatory Surgery Center
- Immediate adjacent structured parking garage
- Flexible suites sizes as small as 2,000 square feet
- Asking rate includes generous tenant improvement package



FOR LEASING INFORMATION, PLEASE CONTACT:

Tom Hummel
thummel@geisrealty.com
215.568.2505

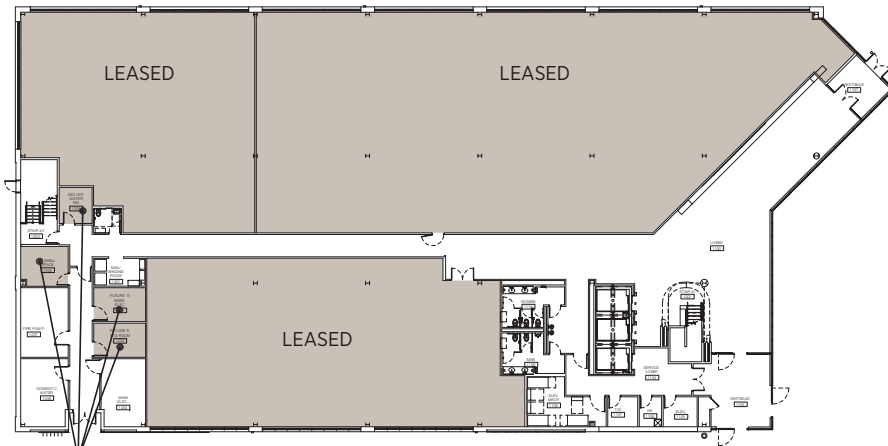
Dan Moller
dmoller@geisrealty.com
215.701.0722

996 Old Eagle School Road
Suite 1117
Wayne, PA 19087

MAIN LINE HEALTH MOB

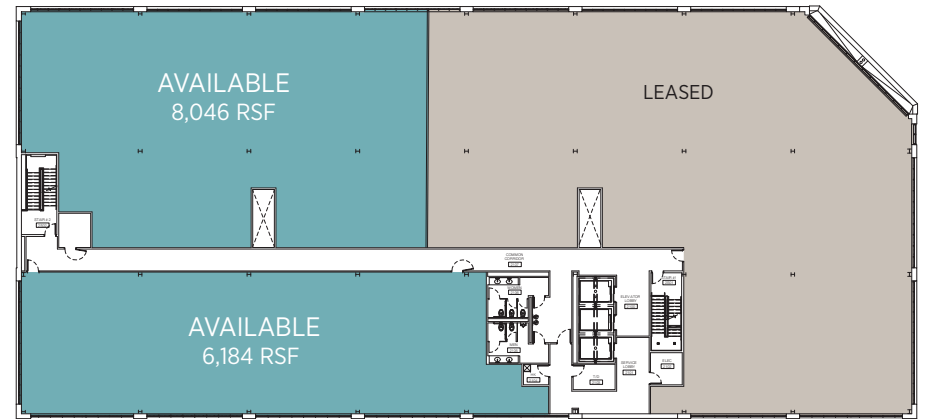
\$25.50 NNN

135 South Bryn Mawr Avenue, Bryn Mawr, PA 19010

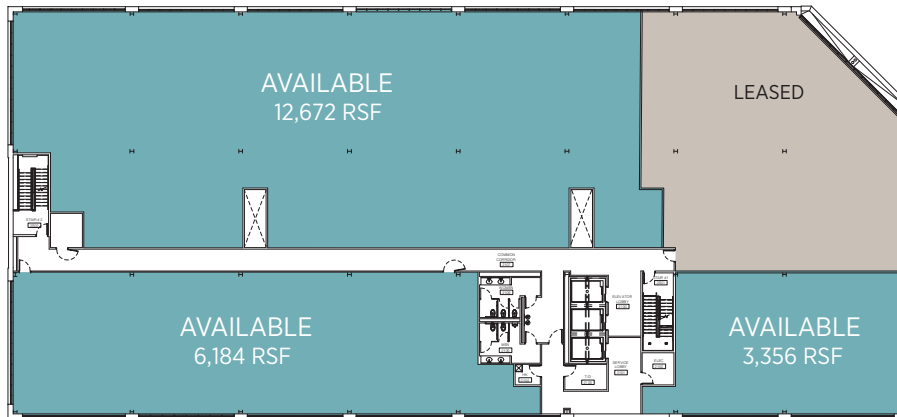


LEASED

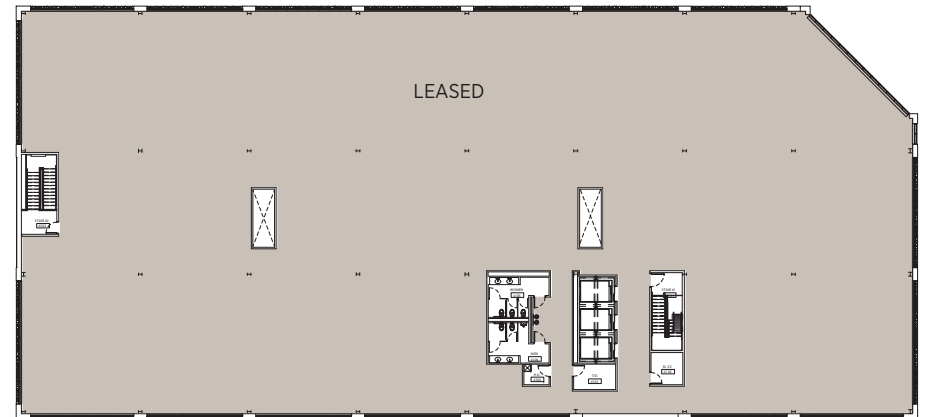
First Floor Plan



Second Floor Plan



Third Floor Plan



Fourth Floor Plan



NYSE: HTA



FOR LEASING INFORMATION, PLEASE CONTACT:

Tom Hummel
thummel@geisrealty.com
215.568.2505

Dan Moller
dmoller@geisrealty.com
215.701.0722

996 Old Eagle School Road
Suite 1117
Wayne, PA 19087