



# broker *Alert*

Contact | Call for a Tour: Jeff Becker 805.653-6794 ext. 201 | [jbecker@beckergroup.com](mailto:jbecker@beckergroup.com)  
Jenny Petty 805.653-6794 ext. 203 | [jpetty@beckergroup.com](mailto:jpetty@beckergroup.com)  
Hutton Becker 805.653-6794 ext. 212 | [hbecker@beckergroup.com](mailto:hbecker@beckergroup.com)

*Historic Office Available*



670 East Thompson Blvd, C Ventura • California

**Real Estate Investments | Property Management**

web | [www.beckergroup.com](http://www.beckergroup.com) tele | 805.653.6794 fax | 805.653.6795 street | 40 South Ash Street Ventura, CA 93001 mail | PO Box 23277, Ventura, CA 93002 license | 01213236

The information above has been obtained from sources believed reliable. While we do not doubt it's accuracy, we have not verified it and make no guarantee, warranty or representation about it. It is your responsibility to independently confirm it's accuracy and completeness. Any projections, opinions, assumption or estimates used are for example only and do not represent the current or future performance of the property. The value of this transaction to you depends on tax and other factors which should be evaluated by your tax, financial and legal advisors. You and your advisors should conduct a careful independent investigation of the property to determine to your satisfaction the stability of the property for your needs.



# Turn-Of-The-Century Historic Office

# For LEASE

Contact | Call for a Tour: Jeff Becker 805.653-6794 ext. 201 | jbecker@beckergrp.com  
Jenny Petty 805.653-6794 ext. 203 | jpetty@beckergrp.com  
Hutton Becker 805.653-6794 ext. 212 | hbecker@beckergrp.com

670 East Thompson Blvd, C  
Ventura • California

**\$ 2,850 monthly**

- Located in the Historic Mitchell Block Across
- Commercial Office or Live/Work Space — Your Choice
- Unique Brick Victorian Bungalow
- 1,453 sq. ft. Unit Available
- Close Proximity to Ventura Freeway 101,  
with Easy Ingress | Egress
- Two Reserved On-Site Rear Parking Spaces
- Includes Sewer, Water, Trash, Electric and Gas



*In Downtown Ventura, walking distance to  
beaches, theaters, restaurants, Metrolink, State  
Fairgrounds, shopping and events;  
convenient access to 101 Frwy + Hwy 33*

## Real Estate Investments | Property Management

web | [www.beckergrp.com](http://www.beckergrp.com) tele | 805.653.6794 fax | 805.653.6795 street | 40 South Ash Street Ventura, CA 93001 mail | PO Box 23277, Ventura, CA 93002 license | 01213236



# 670 East Thompson Boulevard

aerial map



## Real Estate Investments | Property Management

web | [www.beckergroup.com](http://www.beckergroup.com)    tele | 805.653.6794    fax | 805.653.6795    street | 40 South Ash Street Ventura, CA 93001    mail | PO Box 23277, Ventura, CA 93002    license | 01213236

The information above has been obtained from sources believed reliable. While we do not doubt it's accuracy, we have not verified it and make no guarantee, warranty or representation about it. It is your responsibility to independently confirm it's accuracy and completeness. Any projections, opinions, assumption or estimates used are for example only and do not represent the current or future performance of the property. The value of this transaction to you depends on tax and other factors which should be evaluated by your tax, financial and legal advisors. You and your advisors should conduct a careful independent investigation of the property to determine to your satisfaction the stability of the property for your needs.

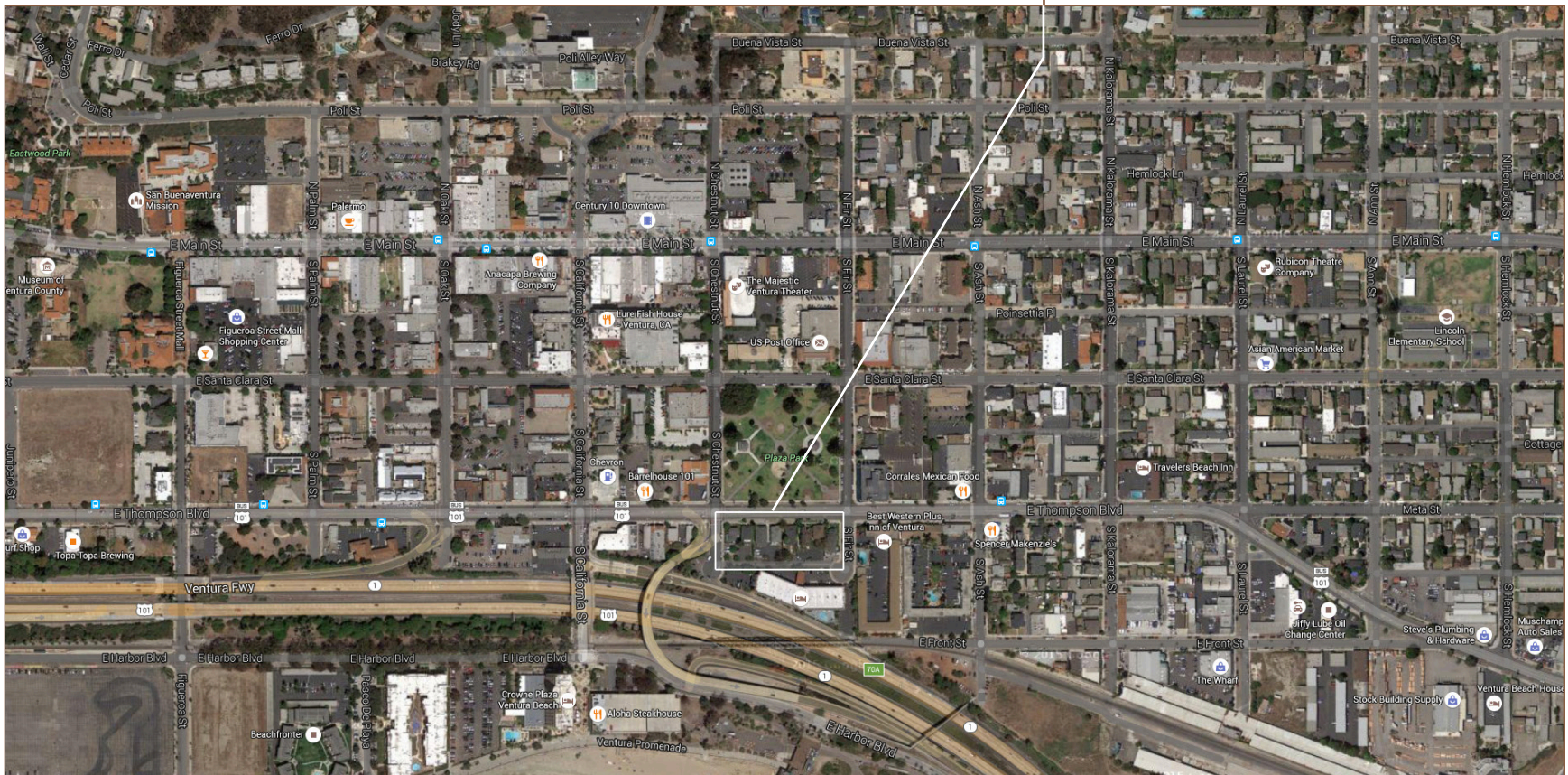


# 670 East Thompson Boulevard

The Mitchell Block Historic District

The Mitchell Block Historic District is comprised of 8 single-family historic residences in the heart of Downtown Ventura. Today, many of these residences have been adaptively reused. Directly across from Plaza Park, with close proximity to City Hall, theater, shopping, restaurants, beaches, Ventura

Pier, State Fairgrounds, Metrolink, 101 Fwy, Hwy 33 + more!



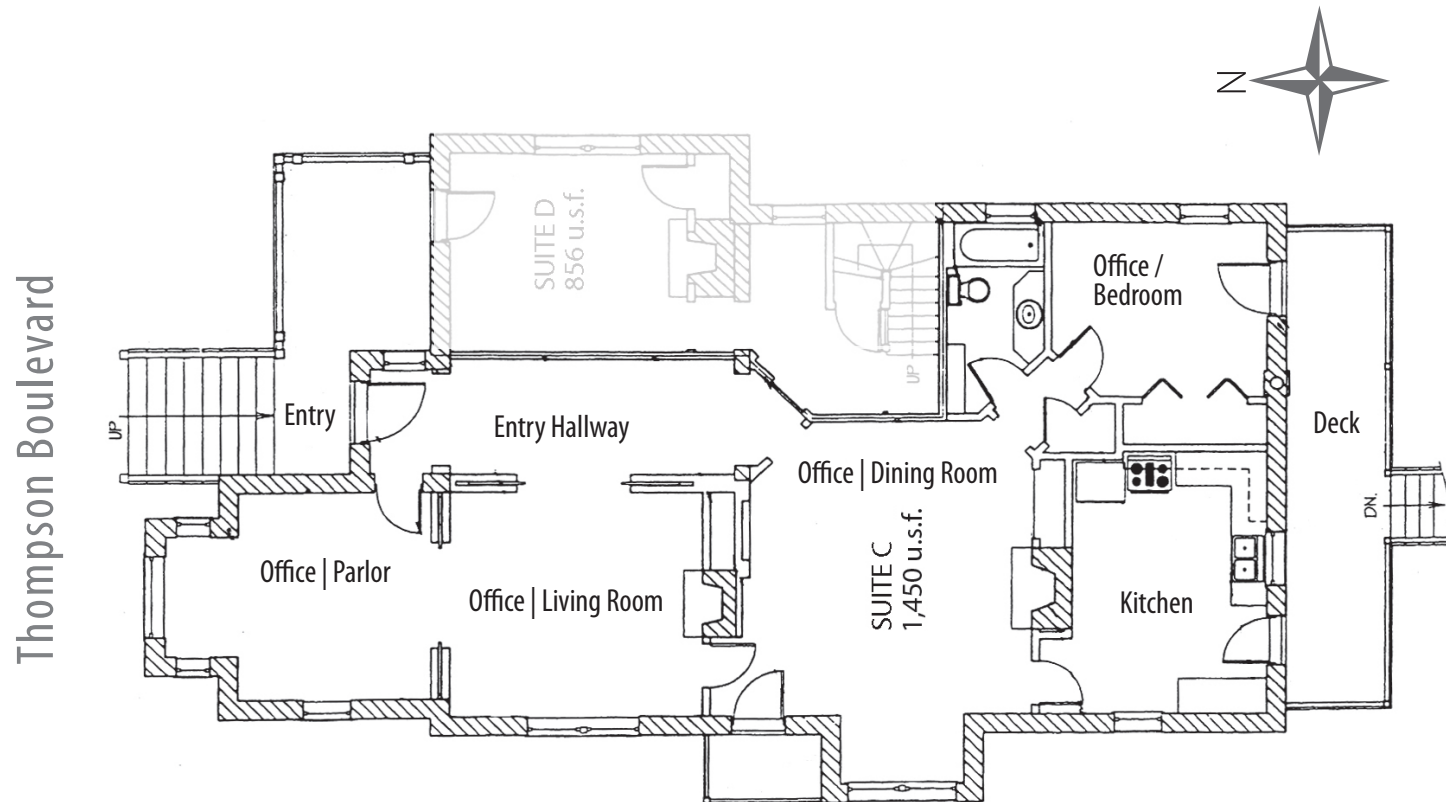
## Real Estate Investments | Property Management

web | [www.beckergrp.com](http://www.beckergrp.com) tele | 805.653.6794 fax | 805.653.6795 street | 40 South Ash Street Ventura, CA 93001 mail | PO Box 23277, Ventura, CA 93002 license | 01213236

The information above has been obtained from sources believed reliable. While we do not doubt it's accuracy, we have not verified it and make no guarantee, warranty or representation about it. It is your responsibility to independently confirm it's accuracy and completeness. Any projections, opinions, assumption or estimates used are for example only and do not represent the current or future performance of the property. The value of this transaction to you depends on tax and other factors which should be evaluated by your tax, financial and legal advisors. You and your advisors should conduct a careful independent investigation of the property to determine to your satisfaction the stability of the property for your needs.

# 670 East Thompson Boulevard

floor plan



## Real Estate Investments | Property Management

web | [www.beckergrp.com](http://www.beckergrp.com) tele | 805.653.6794 fax | 805.653.6795 street | 40 South Ash Street Ventura, CA 93001 mail | PO Box 23277, Ventura, CA 93002 license | 01213236



# 670 East Thompson Boulevard

entrance/hallway + parlor bay window niche



## Real Estate Investments | Property Management

web | [www.beckergrp.com](http://www.beckergrp.com) tele | 805.653.6794 fax | 805.653.6795 street | 40 South Ash Street Ventura, CA 93001 mail | PO Box 23277, Ventura, CA 93002 license | 01213236

The information above has been obtained from sources believed reliable. While we do not doubt it's accuracy, we have not verified it and make no guarantee, warranty or representation about it. It is your responsibility to independently confirm it's accuracy and completeness. Any projections, opinions, assumption or estimates used are for example only and do not represent the current or future performance of the property. The value of this transaction to you depends on tax and other factors which should be evaluated by your tax, financial and legal advisors. You and your advisors should conduct a careful independent investigation of the property to determine to your satisfaction the stability of the property for your needs.



# 670 East Thompson Boulevard

dining room



## Real Estate Investments | Property Management

web | [www.beckergrp.com](http://www.beckergrp.com) tele | 805.653.6794 fax | 805.653.6795 street | 40 South Ash Street Ventura, CA 93001 mail | PO Box 23277, Ventura, CA 93002 license | 01213236

The information above has been obtained from sources believed reliable. While we do not doubt it's accuracy, we have not verified it and make no guarantee, warranty or representation about it. It is your responsibility to independently confirm it's accuracy and completeness. Any projections, opinions, assumption or estimates used are for example only and do not represent the current or future performance of the property. The value of this transaction to you depends on tax and other factors which should be evaluated by your tax, financial and legal advisors. You and your advisors should conduct a careful independent investigation of the property to determine to your satisfaction the stability of the property for your needs.



# 670 East Thompson Boulevard

dining room (l), parlor to living room (r)



## Real Estate Investments | Property Management

web | [www.beckergrp.com](http://www.beckergrp.com) tele | 805.653.6794 fax | 805.653.6795 street | 40 South Ash Street Ventura, CA 93001 mail | PO Box 23277, Ventura, CA 93002 license | 01213236

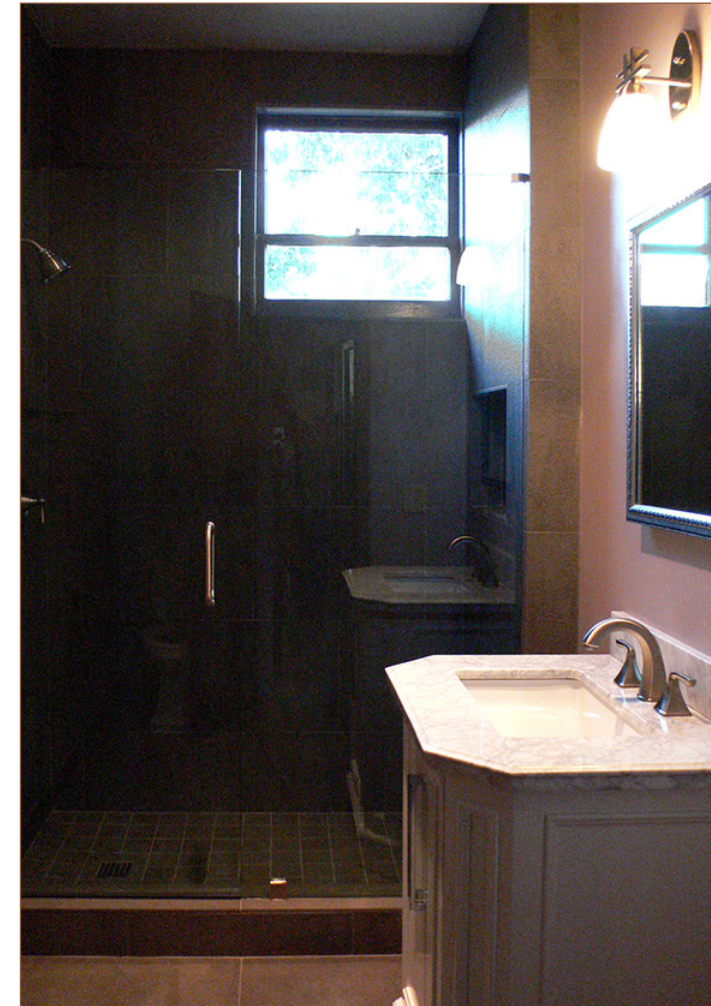
The information above has been obtained from sources believed reliable. While we do not doubt it's accuracy, we have not verified it and make no guarantee, warranty or representation about it. It is your responsibility to independently confirm it's accuracy and completeness. Any projections, opinions, assumption or estimates used are for example only and do not represent the current or future performance of the property. The value of this transaction to you depends on tax and other factors which should be evaluated by your tax, financial and legal advisors. You and your advisors should conduct a careful independent investigation of the property to determine to your satisfaction the stability of the property for your needs.





# 670 East Thompson Boulevard

kitchen/restroom



## Real Estate Investments | Property Management

web | [www.beckergroup.com](http://www.beckergroup.com) tele | 805.653.6794 fax | 805.653.6795 street | 40 South Ash Street Ventura, CA 93001 mail | PO Box 23277, Ventura, CA 93002 license | 01213236

The information above has been obtained from sources believed reliable. While we do not doubt it's accuracy, we have not verified it and make no guarantee, warranty or representation about it. It is your responsibility to independently confirm it's accuracy and completeness. Any projections, opinions, assumption or estimates used are for example only and do not represent the current or future performance of the property. The value of this transaction to you depends on tax and other factors which should be evaluated by your tax, financial and legal advisors. You and your advisors should conduct a careful independent investigation of the property to determine to your satisfaction the stability of the property for your needs.



# 670 East Thompson Boulevard

historic architectural details



## Real Estate Investments | Property Management

web | [www.beckergrp.com](http://www.beckergrp.com) tele | 805.653.6794 fax | 805.653.6795 street | 40 South Ash Street Ventura, CA 93001 mail | PO Box 23277, Ventura, CA 93002 license | 01213236

The information above has been obtained from sources believed reliable. While we do not doubt it's accuracy, we have not verified it and make no guarantee, warranty or representation about it. It is your responsibility to independently confirm it's accuracy and completeness. Any projections, opinions, assumption or estimates used are for example only and do not represent the current or future performance of the property. The value of this transaction to you depends on tax and other factors which should be evaluated by your tax, financial and legal advisors. You and your advisors should conduct a careful independent investigation of the property to determine to your satisfaction the stability of the property for your needs.