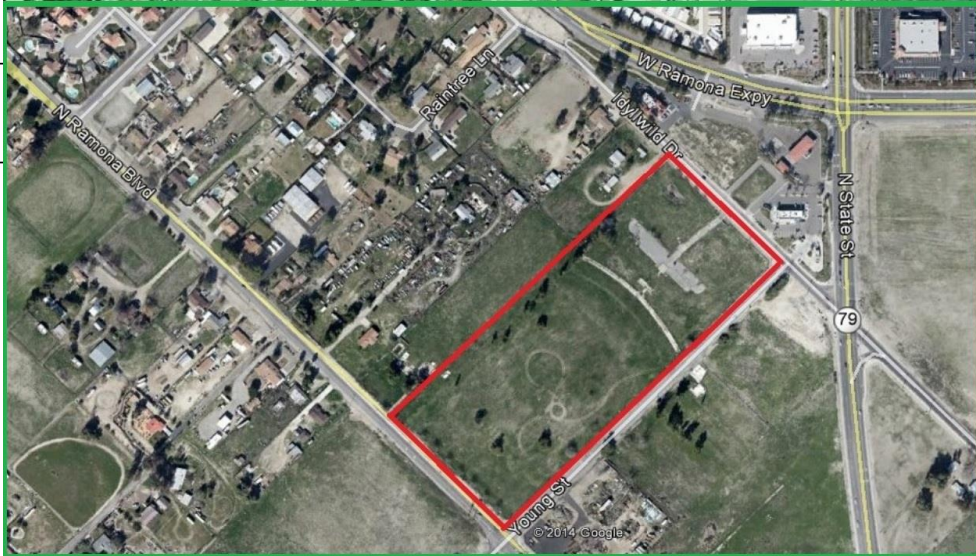


14.22 Acre Development Site
Idyllwild Dr, Young St, & Ramona Blvd
San Jacinto,



***Rare Opportunity to do a Large Development in a Growing Area**

***Block to Block with Two Corners!!! Near Existing Retail**

***Over 14 Acres in Size** **Extensive Frontage on 3 Streets**

***Ideal for Many Uses**

(Industrial, Distribution Center, Big Box, Medical, Grocery, Retail Center, etc.)

***(Maybe Rezone to Industrial or Res???)**

Offered for Sale at \$1,188,800 (under \$2.00 psf)

or

Ground Lease (All or Part)

(Can be combined with adjacent parcels for a potentially bigger site)

Mel Wagstaff

KW Commercial

Cell: (714) 392-0806

mel.wagstaff@gmail.com

BRE #00841847 BRE# 01898399