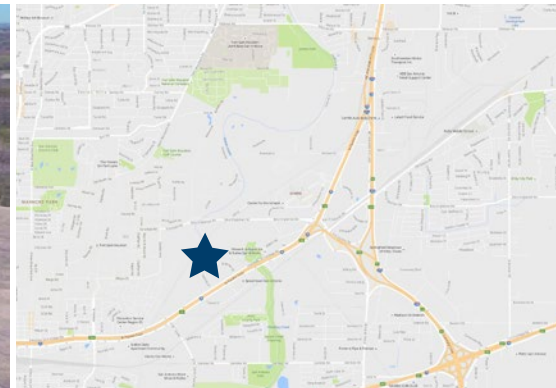




I-35 SAN ANTONIO 5

1946 SHIPMAN DRIVE - 78219



AVAILABLE SUITES

SUITE	SQ. FT.
Entire Building	48,837

SPACE FEATURES



95% Warehouse



5% Office



Front Loading,
Dock High Doors



1 Oversized Dock Door



26' x 45'
Column Spacing



18' Clear Height



Fire Sprinklered



MORRIS GREEN

(210) 253-3995

mgreen@hpitx.com

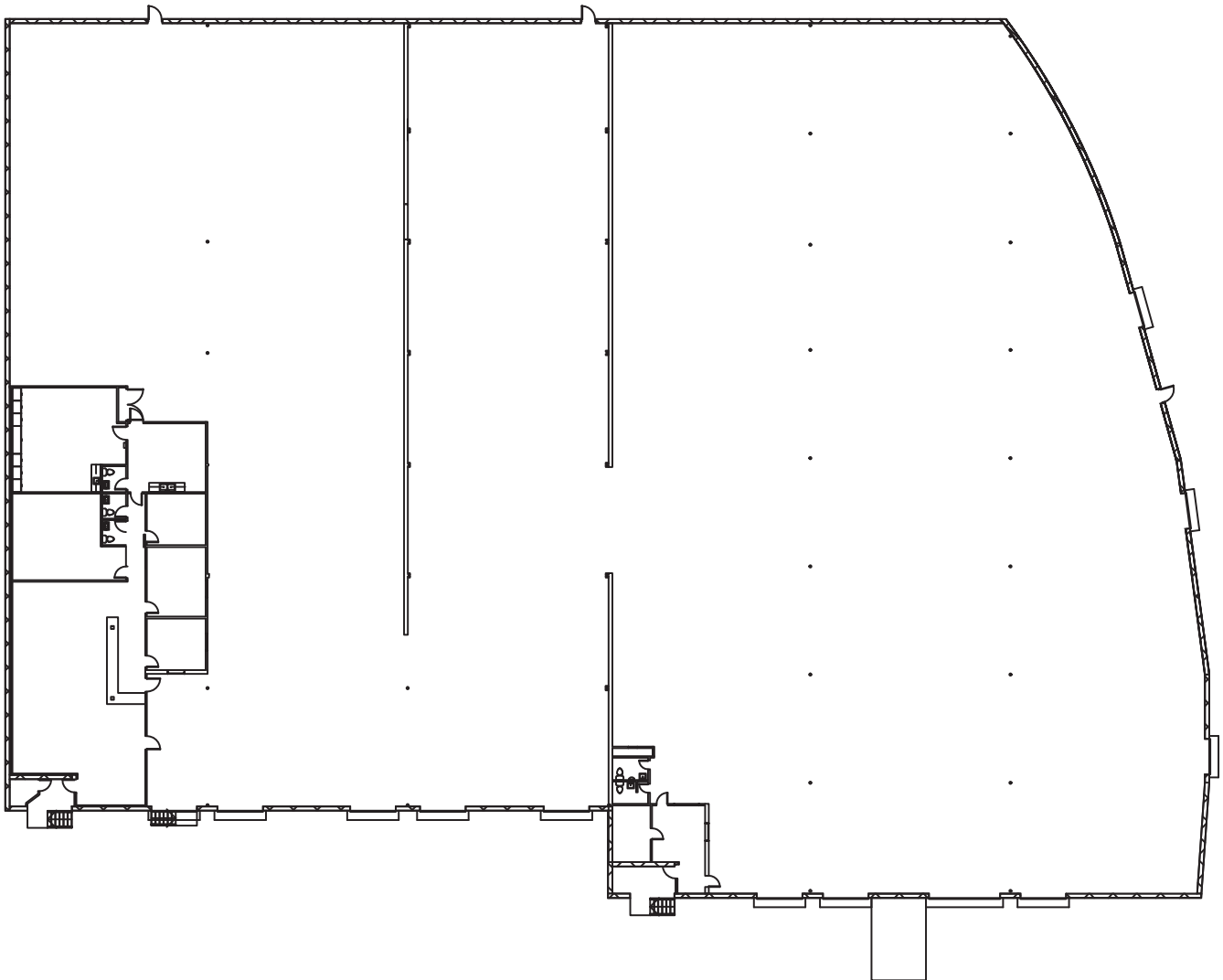
No warranty or representation, expressed or implied, is made as to the accuracy of the information contained herein, and same is submitted subject to errors, omissions, change of price, rental or other conditions, withdrawal without notice, and to any special listing conditions imposed by the principals.

I-35 SAN ANTONIO 5

BUILDING PLAN

ENTIRE BUILDING

48,837 RSF



MORRIS GREEN

(210) 253-3995

mgreen@hpitx.com

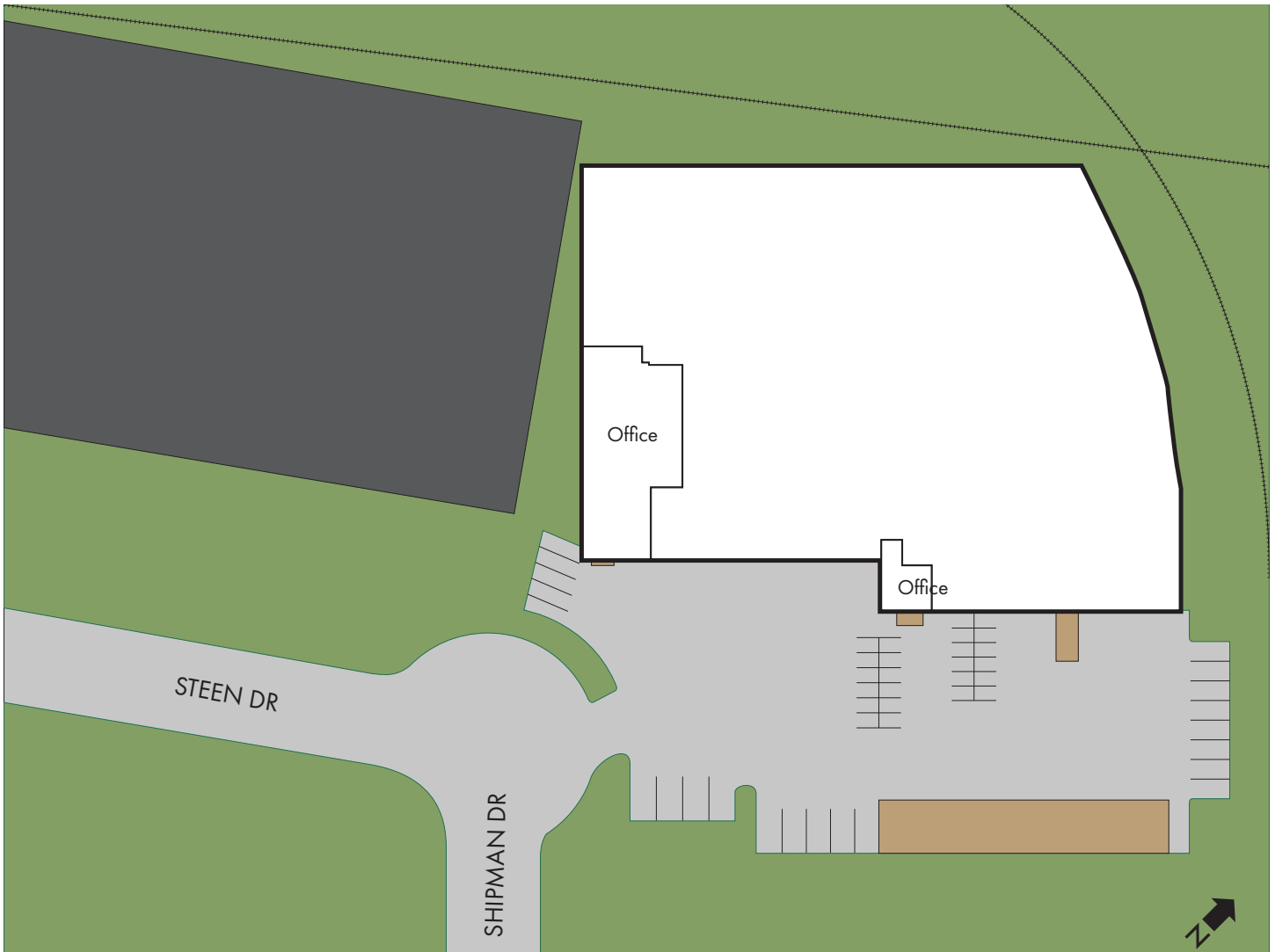
No warranty or representation, expressed or implied, is made as to the accuracy of the information contained herein, and same is submitted subject to errors, omissions, change of price, rental or other conditions, withdrawal without notice, and to any special listing conditions imposed by the principals.

I-35 SAN ANTONIO 5

SITE PLAN

ENTIRE BUILDING

48,837 RSF



MORRIS GREEN

(210) 253-3995

mgreen@hpitx.com

No warranty or representation, expressed or implied, is made as to the accuracy of the information contained herein, and same is submitted subject to errors, omissions, change of price, rental or other conditions, withdrawal without notice, and to any special listing conditions imposed by the principals.