

Rhodes Road Business Park

21627 RHODES ROADS, SUITE G, SPRING, TX 77388



For More Information

Joe Palumbo

281.609.7114
joe@3rdgd.com

7113 FM 2920 RD #200 | Spring, TX 77379 | 281.609.7113 | 3RDGD.COM

Rhodes Road Business Park

21627 RHODES ROADS, SPRING, TX 77388



LOCATION DESCRIPTION

Rhodes Road Business park is a multi-tenant Property, in an Excellent Location in Spring, Less Than 1/4 Mile From FM 2920, 1.16 Miles From The Grand Parkway (99) & 3.6 Miles From I-45, A Short Distance To The Woodlands

SITE DESCRIPTION

Rhodes Road Business Park is Inside Harris County & Klein ISD. Located in a High-Density Residential Populated Area with Over 275,000 Vehicles Per Day on I-45 & Over 40,000 Vehicles Per Day on FM 2920. Easy access to Freeways, Restaurants & Retail. Rhodes Road Business Park a Multi-Tenant Property with Ample Parking. The Property is Gated and is Well-Lit with Security Lighting.

PROPERTY HIGHLIGHTS

- GATED
- WATER IS INCLUDED
- NO MUD TAXES
- SECURITY LIGHTING
- AMPLE PARKING
- CLIMATE-CONTROLLED OFFICE

OFFERING SUMMARY

Lease Rate:	\$1.00 SF/month (MG)
Available SF:	4,200
Lot Size:	2.787 Acres
Building Size:	18,900 SF

For More Information

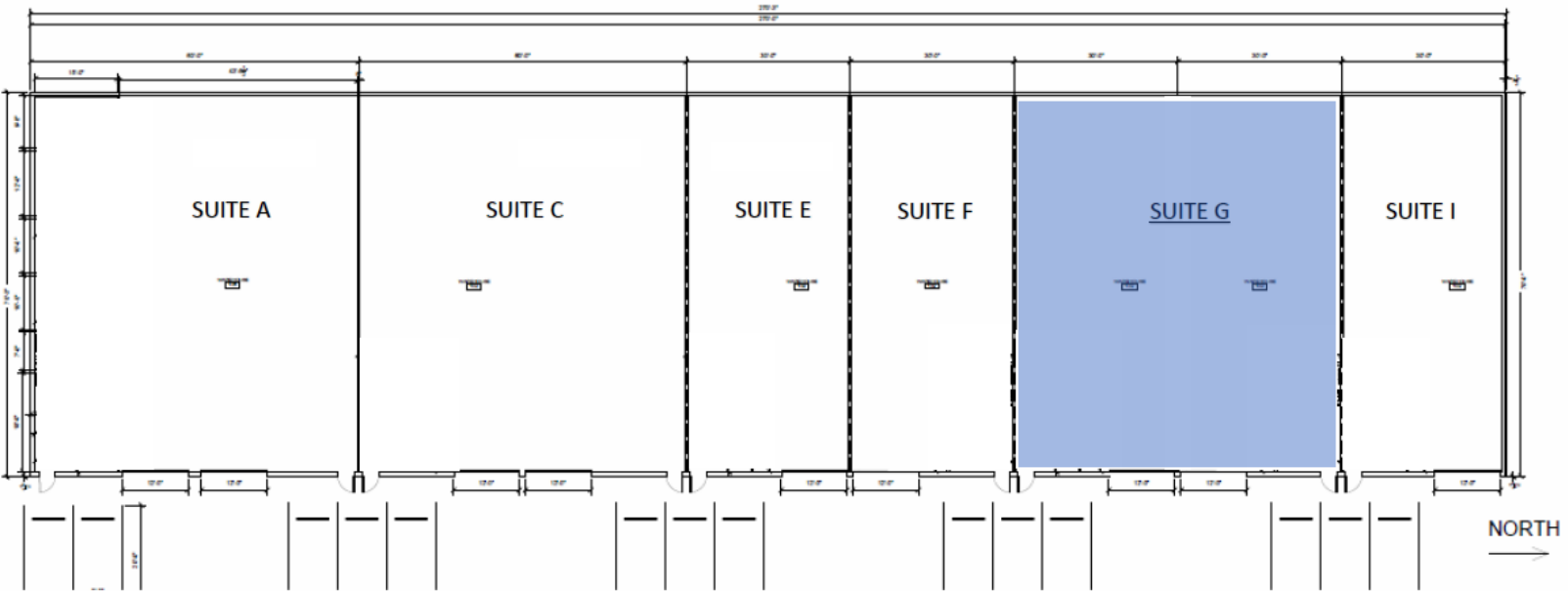
Joe Palumbo

281.609.7114
joe@3rdgd.com

7113 FM 2920 RD #200 | Spring, TX 77379 | 281.609.7113 | 3RDGD.COM

Rhodes Road Business Park

21627 RHODES ROADS, SPRING, TX 77388



LEASE INFORMATION

Lease Type:	MG	Lease Term:	Negotiable
Total Space:	4,200 SF	Lease Rate:	\$1.00 SF/month

AVAILABLE SPACES

SUITE	TENANT	SIZE (SF)	LEASE TYPE	LEASE RATE	DESCRIPTION
21627 Rhodes Rd. Suite G	Available	4,200 SF	Modified Gross	\$1.00 SF/month	Suite G is 4,200 SF with one reception area, one office, one restroom, and a large warehouse.

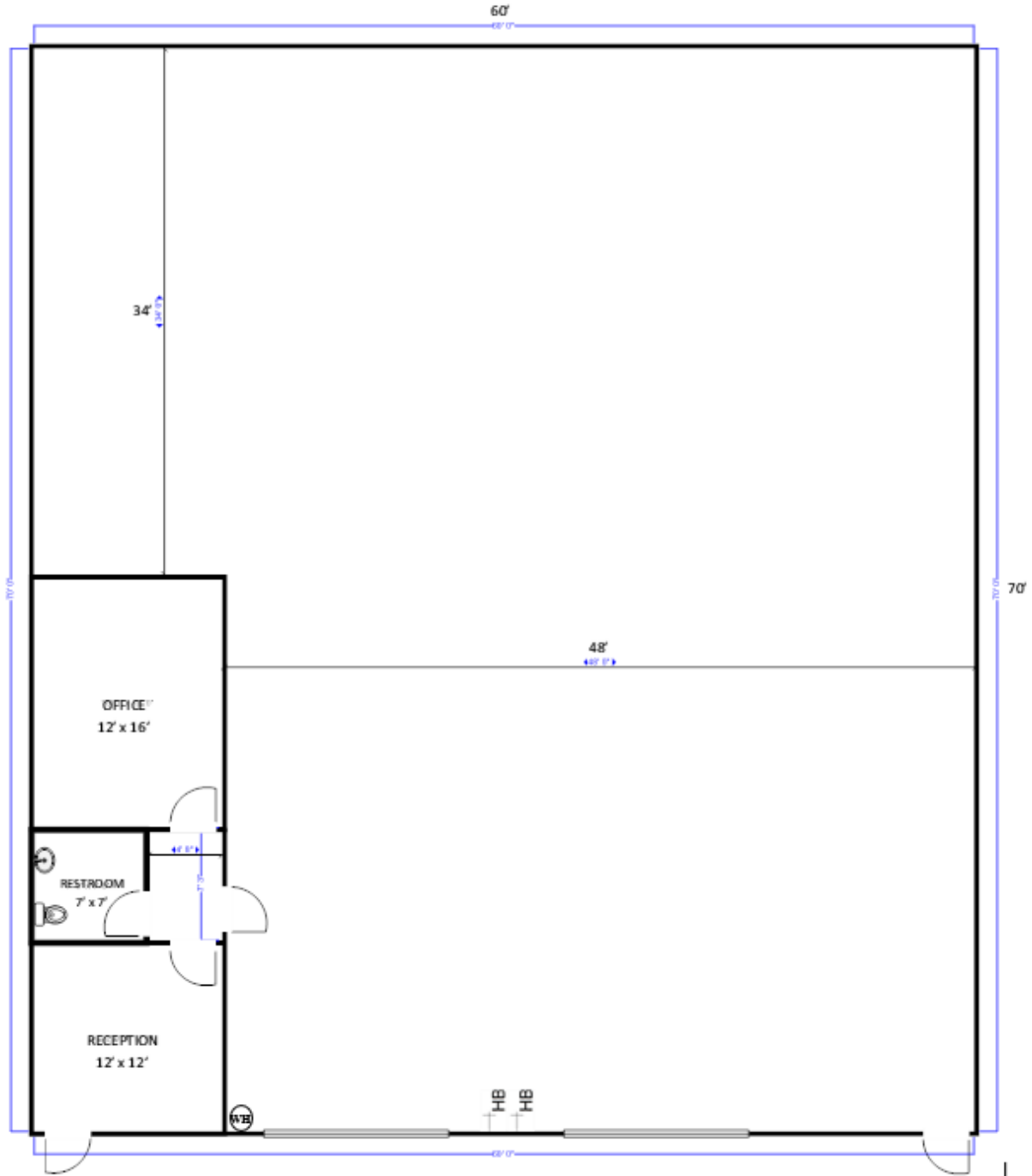
For More Information

Joe Palumbo

281.609.7114
joe@3rdgd.com

Rhodes Road Business Park

21627 RHODES ROADS, SPRING, TX 77388



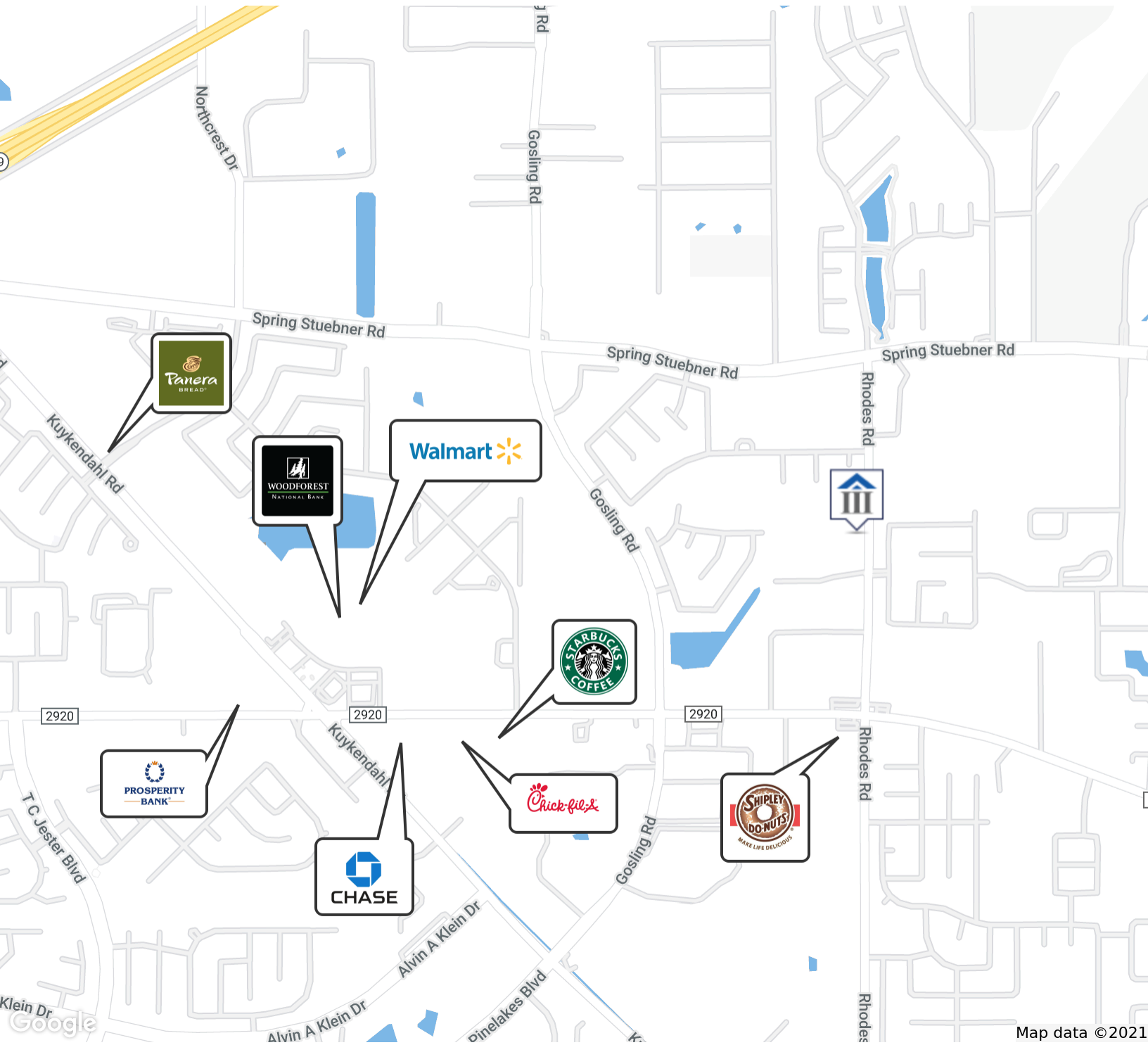
For More Information

Joe Palumbo

281.609.7114
joe@3rdgd.com

Rhodes Road Business Park

21627 RHODES ROADS, SPRING, TX 77388



Map data ©2021

For More Information

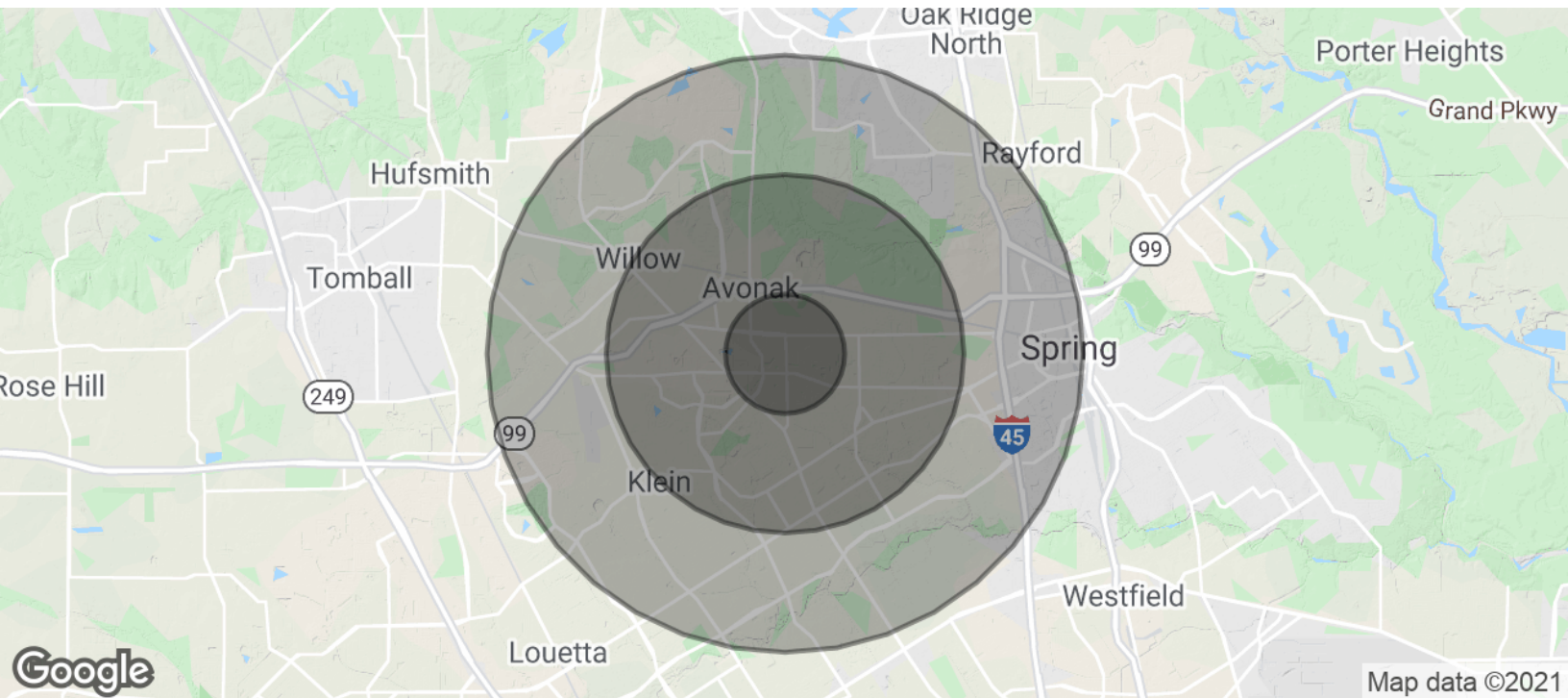
Joe Palumbo

281.609.7114
joe@3rdgd.com

7113 FM 2920 RD #200 | Spring, TX 77379 | 281.609.7113 | 3RDGD.COM

Rhodes Road Business Park

21627 RHODES ROADS, SPRING, TX 77388



POPULATION	1 MILE	3 MILES	5 MILES
Total Population	5,611	51,304	158,046
Average age	33.0	33.8	35.2
Average age (Male)	31.7	32.8	34.5
Average age (Female)	33.4	34.1	35.5
HOUSEHOLDS & INCOME	1 MILE	3 MILES	5 MILES
Total households	1,829	16,627	54,442
# of persons per HH	3.1	3.1	2.9
Average HH income	\$91,499	\$100,463	\$99,059
Average house value	\$140,552	\$181,662	\$197,969

* Demographic data derived from 2010 US Census

For More Information

Joe Palumbo

281.609.7114
joe@3rdgd.com

7113 FM 2920 RD #200 | Spring, TX 77379 | 281.609.7113 | 3RDGD.COM

Rhodes Road Business Park

21627 RHODES ROADS, SPRING, TX 77388



LOCATION INFORMATION

Building Name	Rhodes Road Business Park
Street Address	21627 Rhodes Roads
City, State, Zip	Spring, TX 77388
County	Harris
Cross-Streets	FM 2920
Signal Intersection	No

BUILDING INFORMATION

Occupancy %	100.0%
Tenancy	Multiple
Number of Floors	1
Average Floor Size	2,100 SF
Year Built	2014
Free Standing	No

For More Information

Joe Palumbo

281.609.7114
joe@3rdgd.com

7113 FM 2920 RD #200 | Spring, TX 77379 | 281.609.7113 | 3RDGD.COM