

# For Lease

## Cypress Station

211-235 FM 1960 Road West  
Houston, TX 77090



***Second Generation Restaurant and Big Box Available***

### Shaffer Braun

Associate  
+1 713 275 9653  
shaffer.braun@naipartners.com

### Patrick Keegan

Associate  
+1 713 275 9631  
patrick.keegan@naipartners.com

NAI Partners  
1900 West Loop South, Suite 500  
+1 713 629 0500  
[www.naipartners.com](http://www.naipartners.com)

**NAIPartners**

HOUSTON | AUSTIN | SAN ANTONIO

# For Lease

## Property Highlights

### FEATURES

- At the center of FM-1960 & I-45 with freeway visibility
- 2nd generation restaurant available
- Recently renovated

### PREMISES

- Space Available: 35,950 SF
- Rental Rate: \$12.00 - \$15.00/SF
- NNN: \$2.50/SF

### LEASING HIGHLIGHTS

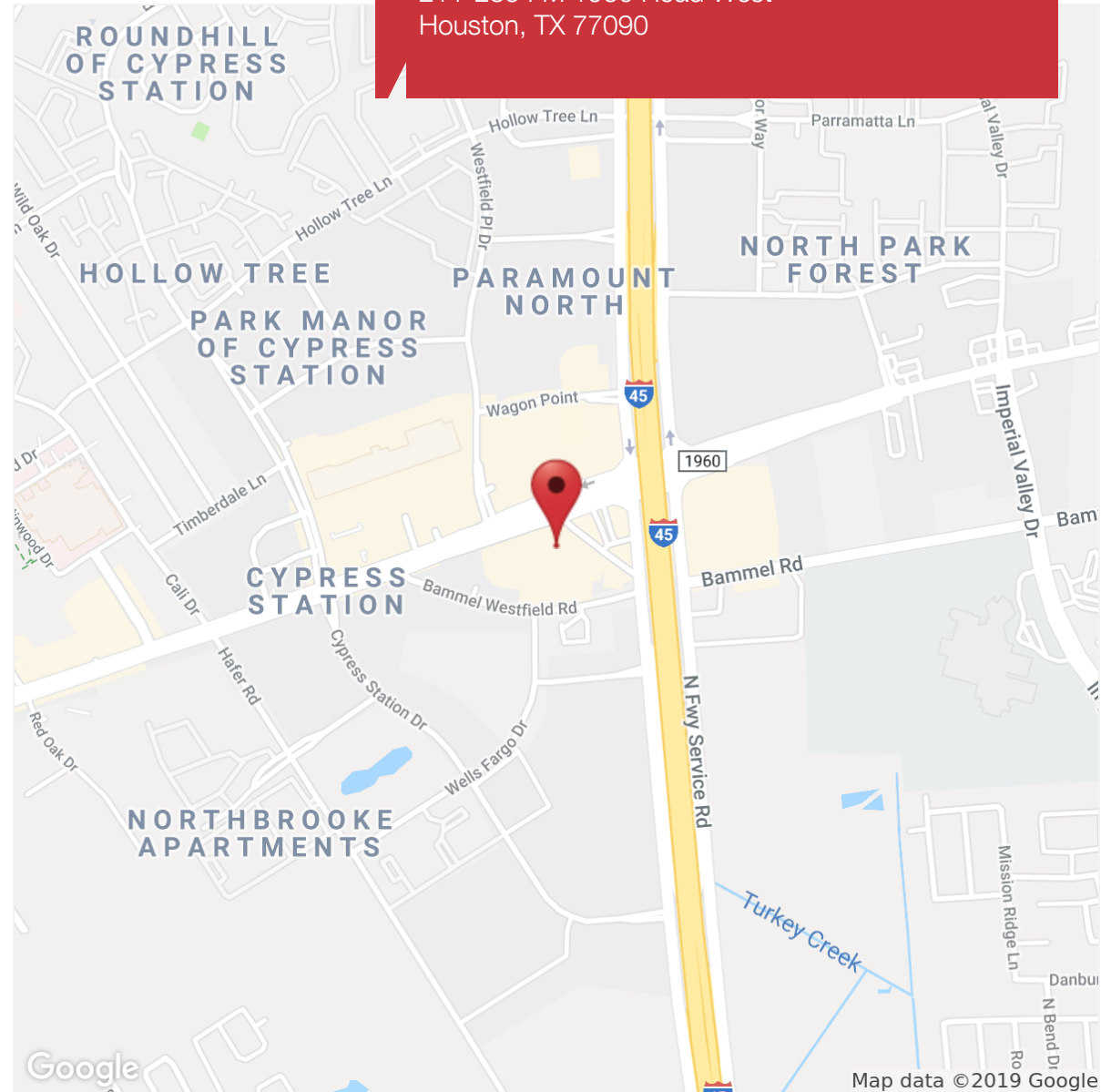
- Pad site available
- Destination retail located at one of Houston's major intersections
- Space available to accommodate all types of users
- Second generation space ready for immediate use

### TRAFFIC COUNT

FM 1960: 33,480 cpd  
I-45: 233,000 cpd

## Cypress Station

211-235 FM 1960 Road West  
Houston, TX 77090



## Area Retailers



### Shaffer Braun

Associate  
+1 713 275 9653  
shaffer.braun@naipartners.com

### Patrick Keegan

Associate  
+1 713 275 9631  
patrick.keegan@naipartners.com

NAI Partners  
1900 West Loop South, Suite 500  
+1 713 629 0500  
[www.naipartners.com](http://www.naipartners.com)

**NAI**Partners

HOUSTON | AUSTIN | SAN ANTONIO

# For Lease

## Cypress Station

211-235 FM 1960 Road West  
Houston, TX 77090



**Shaffer Braun**  
Associate  
+1 713 275 9653  
shaffer.braun@naipartners.com

**Patrick Keegan**  
Associate  
+1 713 275 9631  
patrick.keegan@naipartners.com

NAI Partners  
1900 West Loop South, Suite 500  
+1 713 629 0500  
[www.naipartners.com](http://www.naipartners.com)



HOUSTON | AUSTIN | SAN ANTONIO

The information contained herein has been given to us by the owner of the property or other sources we deem reliable, we have no reason to doubt its accuracy, but we do not guarantee it. All information should be verified prior to purchase or lease. © 2016 NAI Partners. All rights reserved.

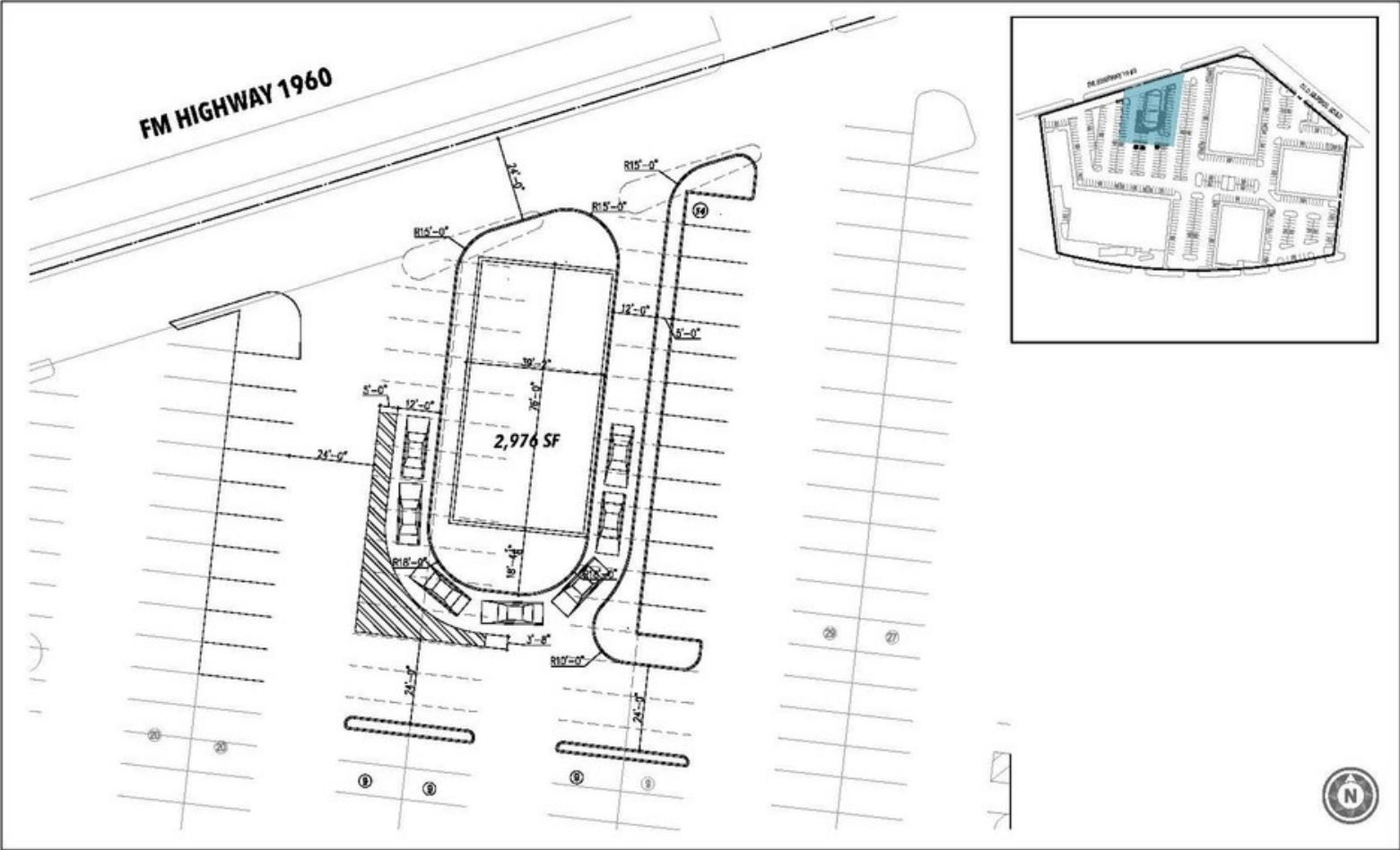
# For Lease

## Cypress Station

211-235 FM 1960 Road West  
Houston, TX 77090

### CYPRESS STATION SHOPPING CENTER - PAD SITE OPPORTUNITY

211-235 FM 1960 WEST | HOUSTON, TEXAS



**Shaffer Braun**  
Associate  
+1 713 275 9653  
shaffer.braun@naipartners.com

**Patrick Keegan**  
Associate  
+1 713 275 9631  
patrick.keegan@naipartners.com

NAI Partners  
1900 West Loop South, Suite 500  
+1 713 629 0500  
[www.naipartners.com](http://www.naipartners.com)

**NAIPartners**  
HOUSTON | AUSTIN | SAN ANTONIO

The information contained herein has been given to us by the owner of the property or other sources we deem reliable, we have no reason to doubt its accuracy, but we do not guarantee it. All information should be verified prior to purchase or lease. © 2016 NAI Partners. All rights reserved.



# For Lease

| POPULATION          | 1 MILE | 3 MILES | 5 MILES |
|---------------------|--------|---------|---------|
| TOTAL POPULATION    | 13,350 | 87,633  | 223,685 |
| MEDIAN AGE          | 27.3   | 30.4    | 30.7    |
| MEDIAN AGE (MALE)   | 26.5   | 29.8    | 29.9    |
| MEDIAN AGE (FEMALE) | 28.3   | 31.1    | 31.4    |

| POPULATION          | 1 MILE    | 3 MILES   | 5 MILES   |
|---------------------|-----------|-----------|-----------|
| TOTAL HOUSEHOLDS    | 4,967     | 30,592    | 76,029    |
| # OF PERSONS PER HH | 2.7       | 2.9       | 2.9       |
| AVERAGE HH INCOME   | \$46,412  | \$63,066  | \$66,816  |
| AVERAGE HOUSE VALUE | \$141,251 | \$149,844 | \$146,248 |

| RACE              | 1 MILE | 3 MILES | 5 MILES |
|-------------------|--------|---------|---------|
| % WHITE           | 53.5%  | 55.2%   | 55.4%   |
| % BLACK           | 33.8%  | 30.9%   | 29.3%   |
| % ASIAN           | 2.8%   | 3.9%    | 5.2%    |
| % HAWAIIAN        | 0.4%   | 0.2%    | 0.1%    |
| % AMERICAN INDIAN | 0.6%   | 0.3%    | 0.2%    |
| % OTHER           | 7.0%   | 7.5%    | 8.0%    |

| ETHNICITY (%) | 1 MILE | 3 MILES | 5 MILES |
|---------------|--------|---------|---------|
| % HISPANIC    | 36.9%  | 32.9%   | 31.8%   |

\* Demographic data derived from 2010 US Census

\* Demographic data derived from 2010 US Census

**Shaffer Braun**

Associate  
+1 713 275 9653  
shaffer.braun@naipartners.com

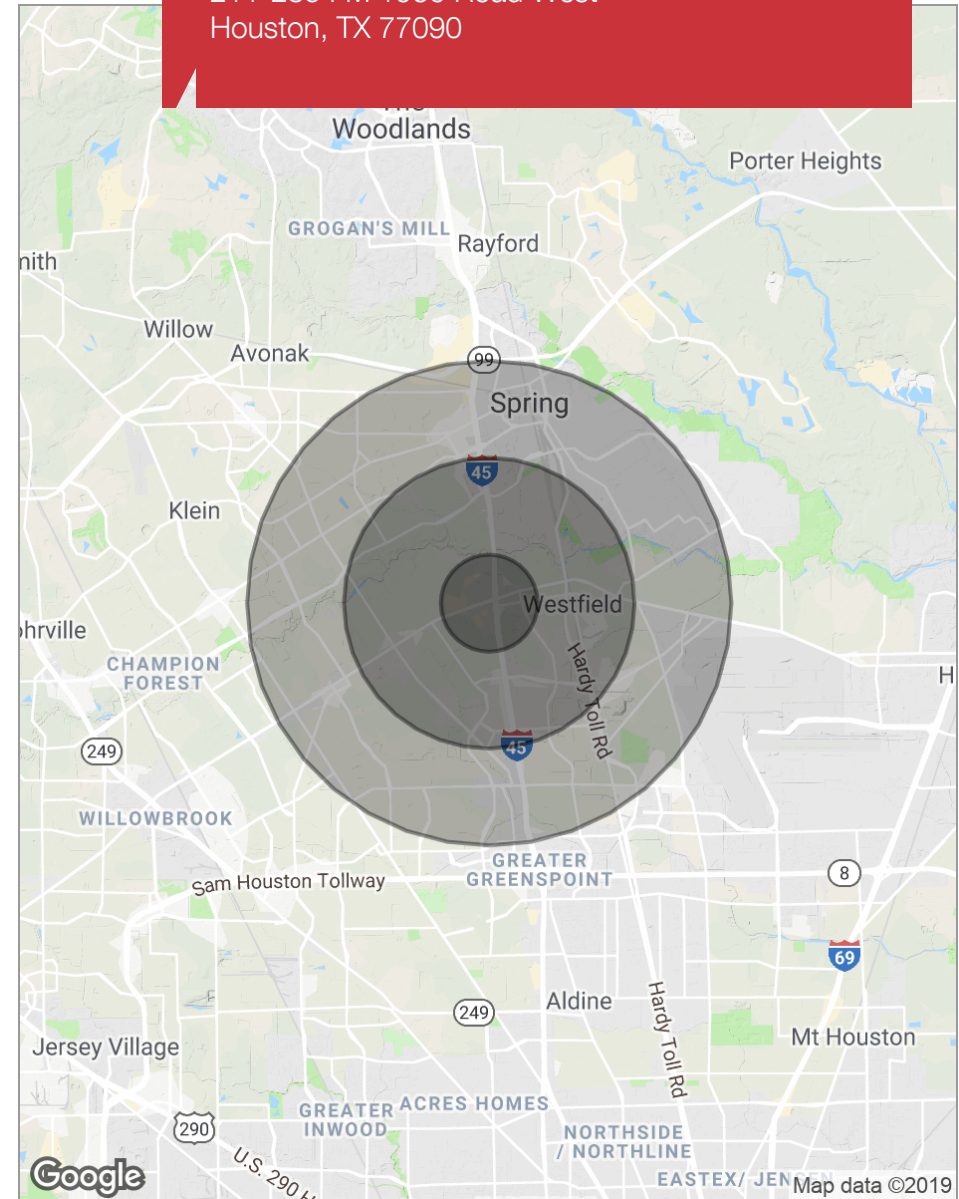
**Patrick Keegan**

Associate  
+1 713 275 9631  
patrick.keegan@naipartners.com

NAI Partners  
1900 West Loop South, Suite 500  
+1 713 629 0500  
[www.naipartners.com](http://www.naipartners.com)

## Cypress Station

211-235 FM 1960 Road West  
Houston, TX 77090



**NAI Partners**

HOUSTON | AUSTIN | SAN ANTONIO



# Information About Brokerage Services

Texas law requires all real estate license holders to give the following information about brokerage services to prospective buyers, tenants, sellers and landlords.



### TYPES OF REAL ESTATE LICENSE HOLDERS:

- **A BROKER** is responsible for all brokerage activities, including acts performed by sales agents sponsored by the broker.
- **A SALES AGENT** must be sponsored by a broker and works with clients on behalf of the broker.

### A BROKER'S MINIMUM DUTIES REQUIRED BY LAW (A client is the person or party that the broker represents):

- Put the interests of the client above all others, including the broker's own interests;
- Inform the client of any material information about the property or transaction received by the broker;
- Answer the client's questions and present any offer to or counter-offer from the client; and
- Treat all parties to a real estate transaction honestly and fairly.

### A LICENSE HOLDER CAN REPRESENT A PARTY IN A REAL ESTATE TRANSACTION:

**AS AGENT FOR OWNER (SELLER/LANDLORD):** The broker becomes the property owner's agent through an agreement with the owner, usually in a written listing to sell or property management agreement. An owner's agent must perform the broker's minimum duties above and must inform the owner of any material information about the property or transaction known by the agent, including information disclosed to the agent or subagent by the buyer or buyer's agent.

**AS AGENT FOR BUYER/TENANT:** The broker becomes the buyer/tenant's agent by agreeing to represent the buyer, usually through a written representation agreement. A buyer's agent must perform the broker's minimum duties above and must inform the buyer of any material information about the property or transaction known by the agent, including information disclosed to the agent by the seller or seller's agent.

**AS AGENT FOR BOTH - INTERMEDIARY:** To act as an intermediary between the parties the broker must first obtain the written agreement of *each party* to the transaction. The written agreement must state who will pay the broker and, in conspicuous bold or underlined print, set forth the broker's obligations as an intermediary. A broker who acts as an intermediary:

- Must treat all parties to the transaction impartially and fairly;
- May, with the parties' written consent, appoint a different license holder associated with the broker to each party (owner and buyer) to communicate with, provide opinions and advice to, and carry out the instructions of each party to the transaction.
- Must not, unless specifically authorized in writing to do so by the party, disclose:
  - that the owner will accept a price less than the written asking price;
  - that the buyer/tenant will pay a price greater than the price submitted in a written offer; and
  - any confidential information or any other information that a party specifically instructs the broker in writing not to disclose, unless required to do so by law.

**AS SUBAGENT:** A license holder acts as a subagent when aiding a buyer in a transaction without an agreement to represent the buyer. A subagent can assist the buyer but does not represent the buyer and must place the interests of the owner first.

### TO AVOID DISPUTES, ALL AGREEMENTS BETWEEN YOU AND A BROKER SHOULD BE IN WRITING AND CLEARLY ESTABLISH:

- The broker's duties and responsibilities to you, and your obligations under the representation agreement.
- Who will pay the broker for services provided to you, when payment will be made and how the payment will be calculated.

**LICENSE HOLDER CONTACT INFORMATION:** This notice is being provided for information purposes. It does not create an obligation for you to use the broker's services. Please acknowledge receipt of this notice below and retain a copy for your records.

|  |             |                               |              |
|--|-------------|-------------------------------|--------------|
| PCR Brokerage Houston, LLC dba NAI Partners                        | 9003949     | licensing@naipartners.com     | 713-629-0500 |
| Licensed Broker /Broker Firm Name or Primary Assumed Business Name | License No. | Email                         | Phone        |
| Jon Silberman  | 389162      | jon.silberman@naipartners.com | 713-629-0500 |
| Designated Broker of Firm  | License No. | Email                         | Phone        |
| Jon Silberman  | 389162      | jon.silberman@naipartners.com | 713-629-0500 |
| Licensed Supervisor of Sales Agent/ Associate                      | License No. | Email                         | Phone        |
| Chris Holder   | 688220      | chris.holder@naipartners.com  | 713-629-0500 |
| Sales Agent/Associate's Name                                       | License No. | Email                         | Phone        |

Buyer/Tenant/Seller/Landlord Initials

Date