



FOR LEASE

Westview Bus Ctr North

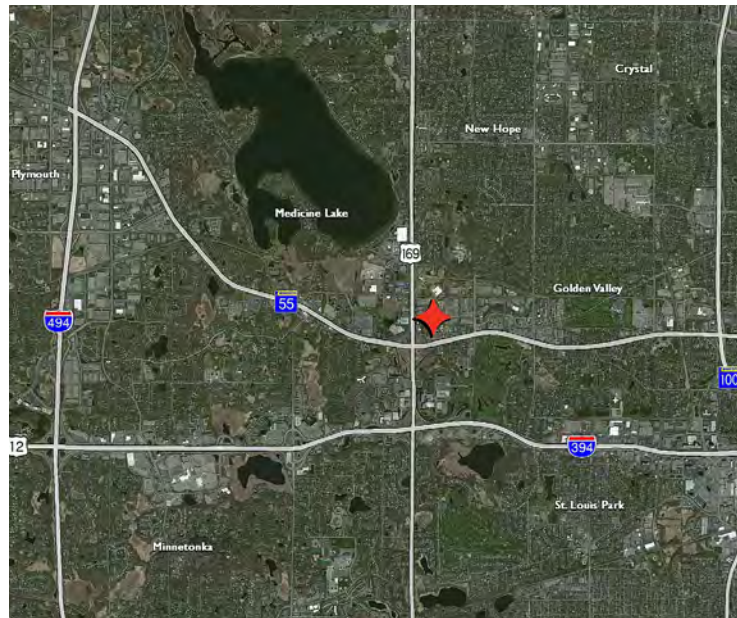
680-700 Mendelssohn Ave, Golden Valley, MN



7,837 SF Available

Property Highlights

- Excellent location with easy access to Hwy 169 & Hwy 55
- Heavy power
- Air-conditioned warehouse
- Abundant parking
- Ideal space for a medical or technology company
- Can accommodate call center parking



Bruce Hoberman

Senior Associate
+1 952 820 8775
bruce.hoberman@cushwake.com

3500 American Blvd W Suite 200
Minneapolis, MN 55431
Main +1 952 831 1000
cushmanwakefield.com

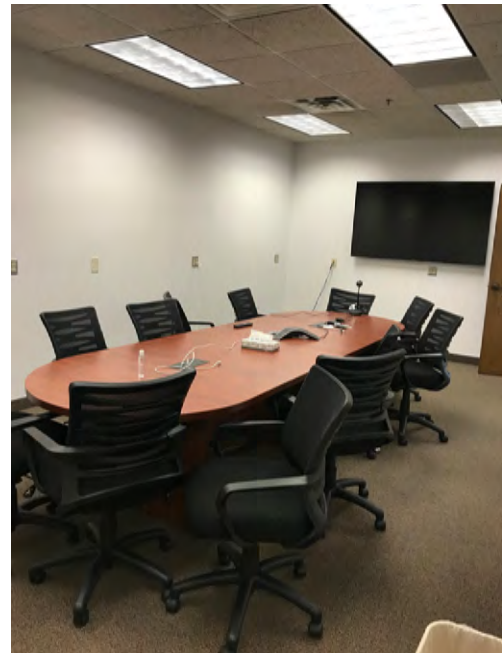
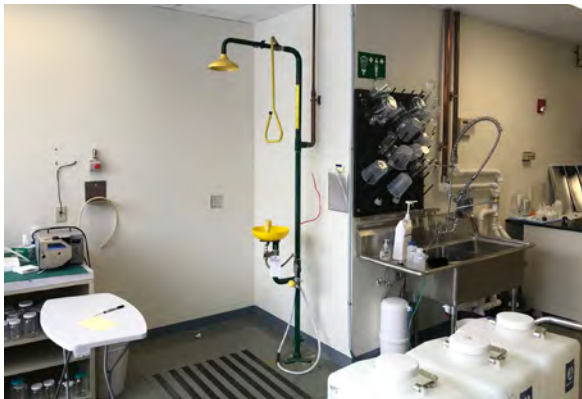
Building Features

Building Size	59,820 sf	Lease Rates	\$9.95 psf office \$7.50 psf tech \$4.50 psf warehouse
Year Built	1981		
Clear Height	14'	2019 Est. Tax/CAM	\$3.73 psf total

Space Available

Suite	Total SF	Office SF	Warehouse SF	Tech SF	Loading	Available
678	7,837	3,211	1,962	2,664	1 dock	Now



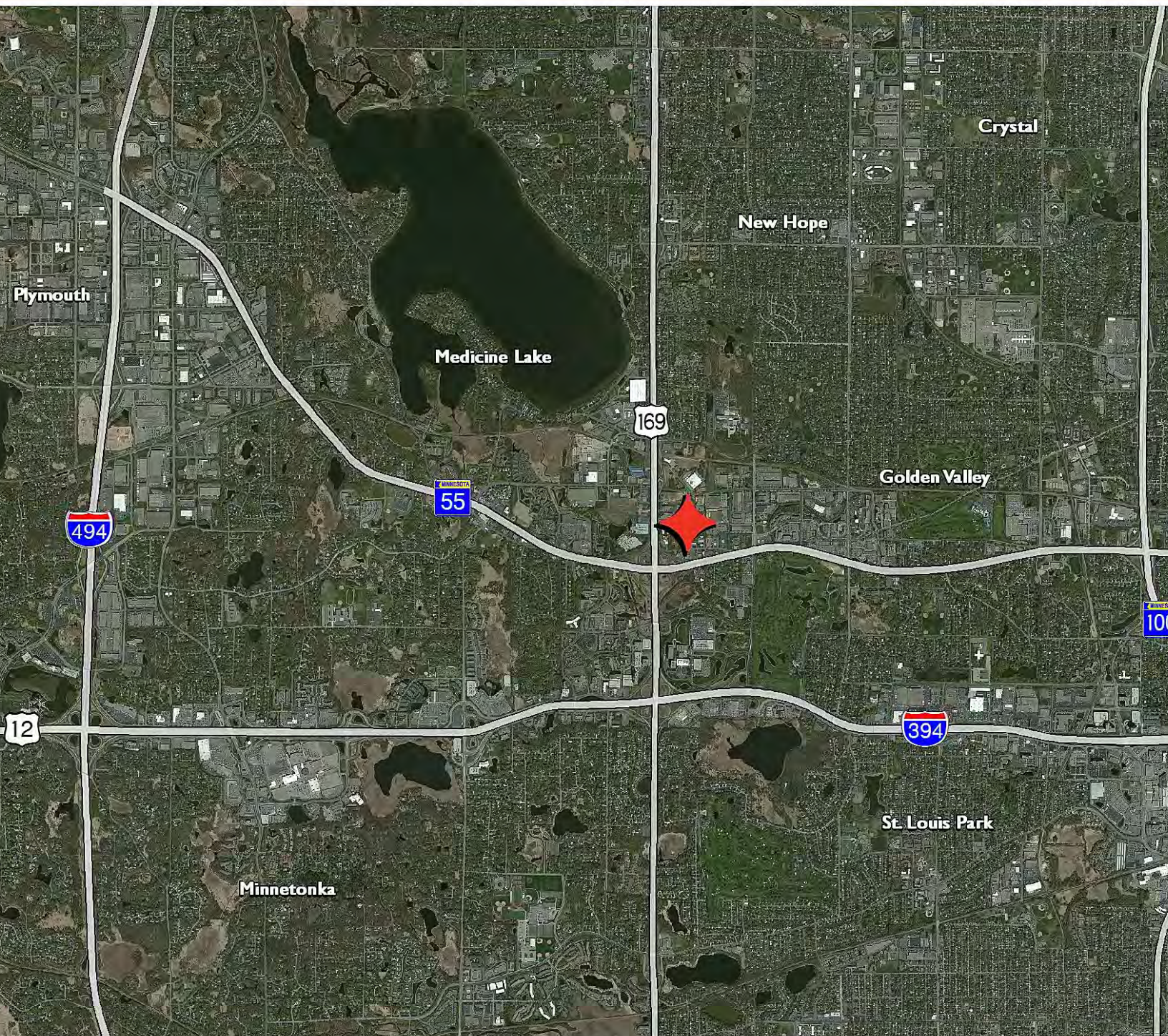




FOR LEASE

Westview Bus Ctr North

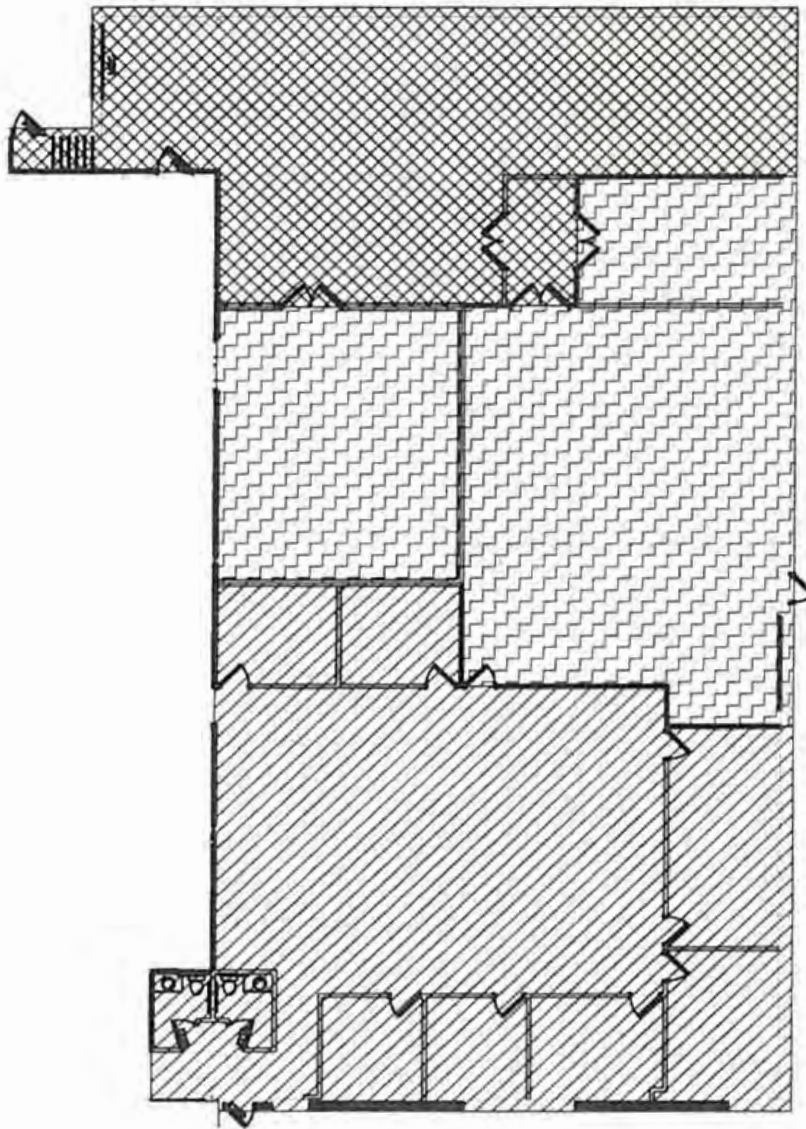
680-700 Mendelssohn Ave, Golden Valley, MN



Westview Bus Ctr North

680-700 Mendelssohn Ave, Golden Valley, MN

Suite 678



678 MENDELSSOHN - 7,837 S.F. TOTAL



OFFICE - 3,211 S.F.



WAREHOUSE - 1,962 S.F.



TECH - 2,664 S.F.