



PROPERTY INFORMATION

Restaurant opportunity available on the coveted Trailhead Golf Course in Liberty Lake, WA. The city is seeking a qualified long term restaurant tenant to lease a portion of a newly constructed building set to be completed mid-2023.

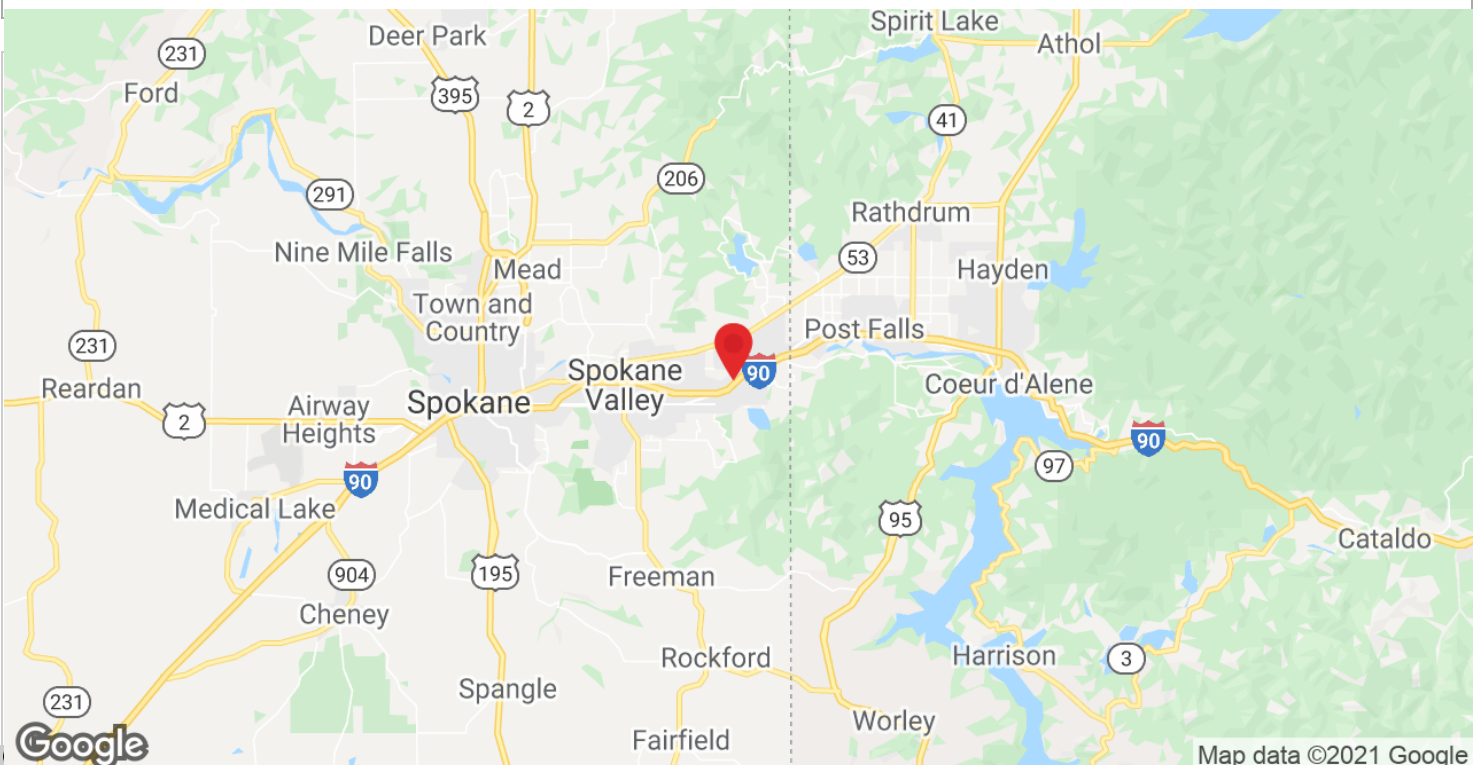
PROPERTY FEATURES

- Located on the popular Trailhead Golf Course and Driving Range in the heart of Liberty Lake
- Golf Course open 361 days a year
- 15,000 VPD
- Restaurant Opportunity
- 2,600 F
- Close proximity to Idaho Stateline (4 miles) Spokane, (16 miles) and Coeur d'Alene (18 miles)

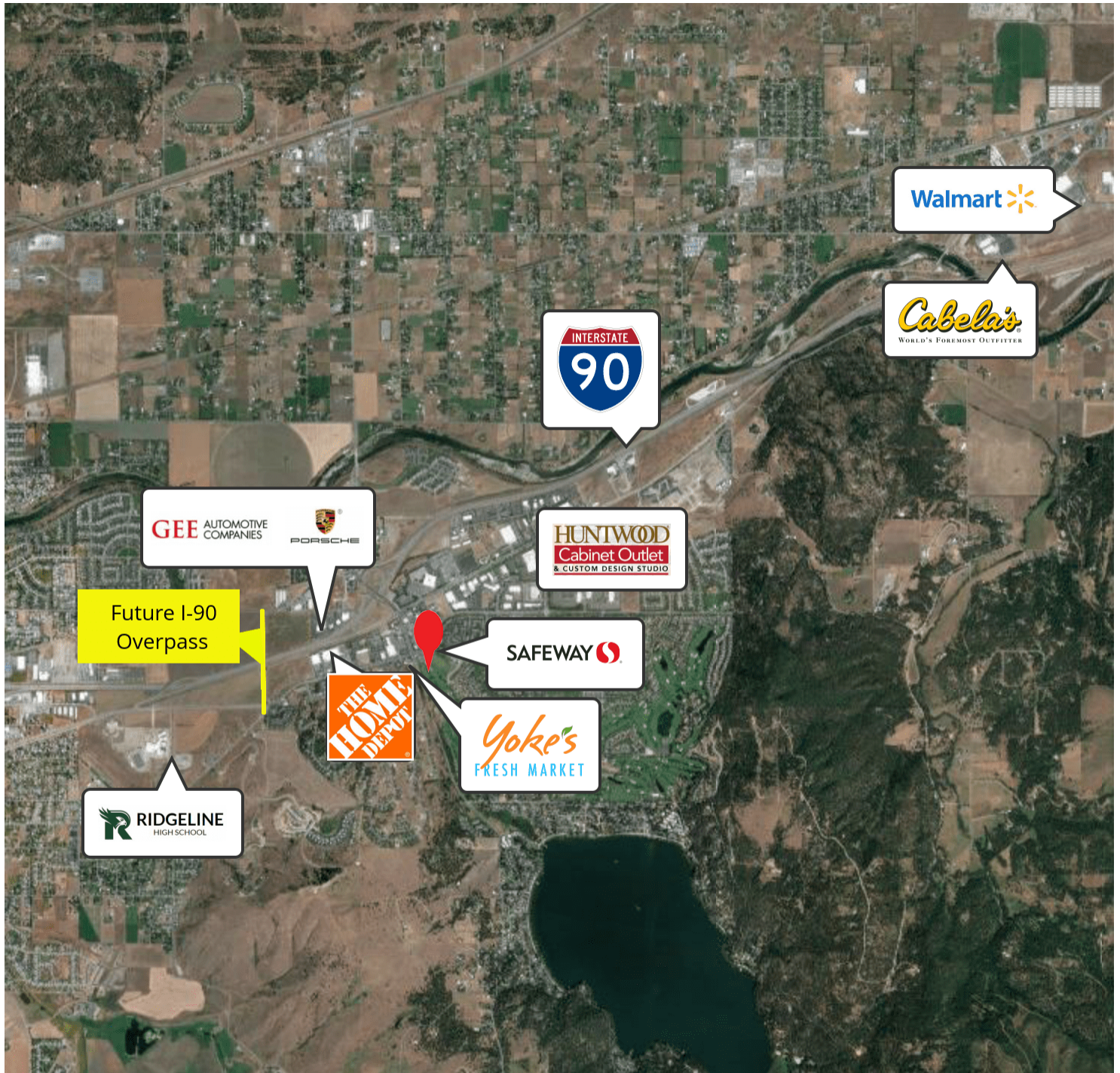
Goodale & Barbieri Company
818 West Riverside #300
Spokane, WA 99201
www.g-b.com

Ryan Oberg | Commercial Leasing & Sales Broker
509.344.4909 // roberg@g-b.com
Eric Peterson | Commercial & Leasing Manager
509.323.7201 // epeterson@g-b.com

1



on his own verification of this information as a part of their own due diligence. Copyright: we respect the intellectual property of others. If you believe that your work has been copied in a way that constitutes copyright infringement please contact us immediately.



Google

Imagery ©2021, CNES / Airbus, Landsat / Copernicus, Maxar Technologies, U.S. Geological Survey, USDA Farm Service Agency

Warranty: Goodale & Barbieri Company does not guarantee, warrant, either expressed or implied, any information supplied by the Seller. Buyer should rely on his own verification of this information as a part of their own due diligence. Copyright: We respect the intellectual property of others. If you believe that your work has been copied in a way that constitutes copyright infringement please contact us immediately.

Goodale & Barbieri Company
818 West Riverside #300
Spokane, WA 99201
www.g-b.com

Ryan Oberg | Commercial Leasing & Sales Broker
509.344.4909 // roberg@g-b.com
Eric Peterson | Commercial & Leasing Manager
509.863.3873 // epeterson@g-b.com