

COMMERCIAL LAND FOR SALE

WEST WICKENBURG WAY/ HIGHWAY 60 - FOR SALE

Wickenburg, Arizona 85390



PROPERTY INFORMATION

Ideally situated NEAR the intersection of US 60 and Vulture Mine Road for RETAIL development

- + Parcel Size: $\pm 94,971$ SF (± 2.18 acres)
- + Parcel Number: 505-39-101A (Maricopa County)
- + Zoning: C-1; Town of Wickenburg
- + Utilities are in the street (water, electric), sewer is located at the back of property

CALL FOR PRICING



CONTACT

RYAN EUSTICE

Vice President
+1 602 735 1917
ryan.eustice@cbre.us



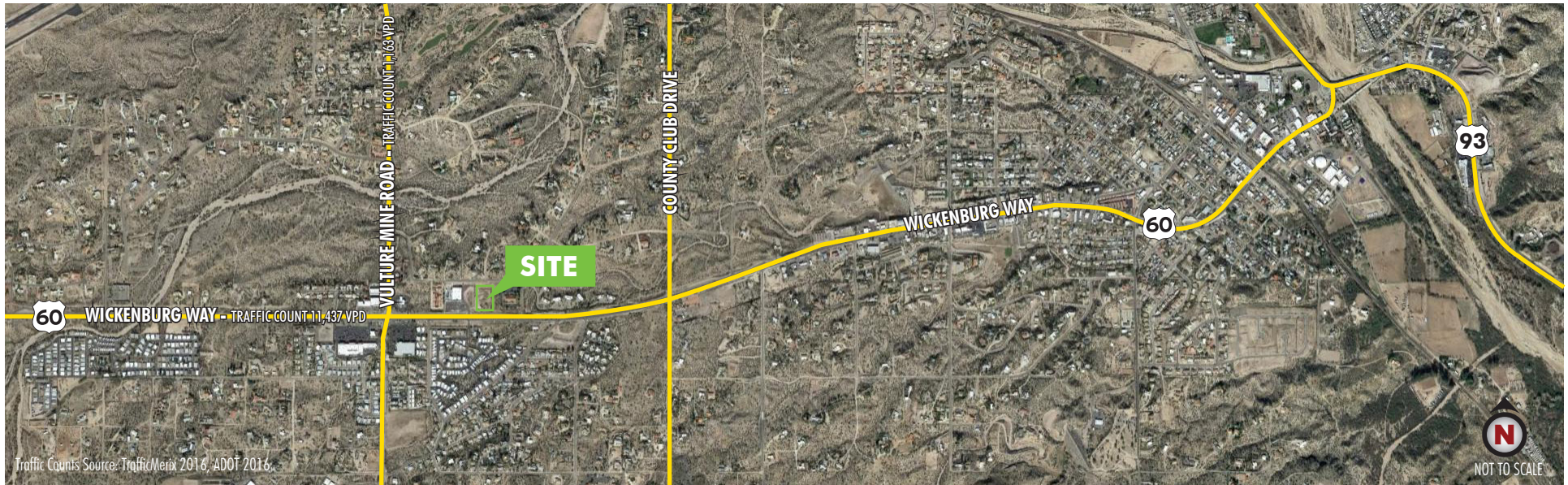
Traffic Counts Source: TrafficMerix 2016, ADOT 2016

www.cbre.us

CBRE

COMMERCIAL LAND FOR SALE

WEST WICKENBURG WAY/HIGHWAY 60 WICKENBURG, ARIZONA



Demographics	5 Mile Radius
2017 Estimated Population	7,374
2022 Projected Population	8,278
2017 Average Household Income	\$56,926
2017 Estimated Average Age	51.9

SOURCE: Esri

Traffic Count

US 60 Between Vulture Mine Road & Country Club Dr 13,802 VPD

SOURCE: ADOT 2015

© 2018 CBRE, Inc. All rights reserved. This information has been obtained from sources believed reliable, but has not been verified for accuracy or completeness. You should conduct a careful, independent investigation of the property and verify all information. Any reliance on this information is solely at your own risk. Photos herein are the property of their respective owners and use of these images without the express written consent of the owner is prohibited. CBRE and the CBRE logo are service marks of CBRE, Inc. and/or its affiliated or related companies in the United States and other countries. All other marks displayed on this document are the property of their respective owners.