

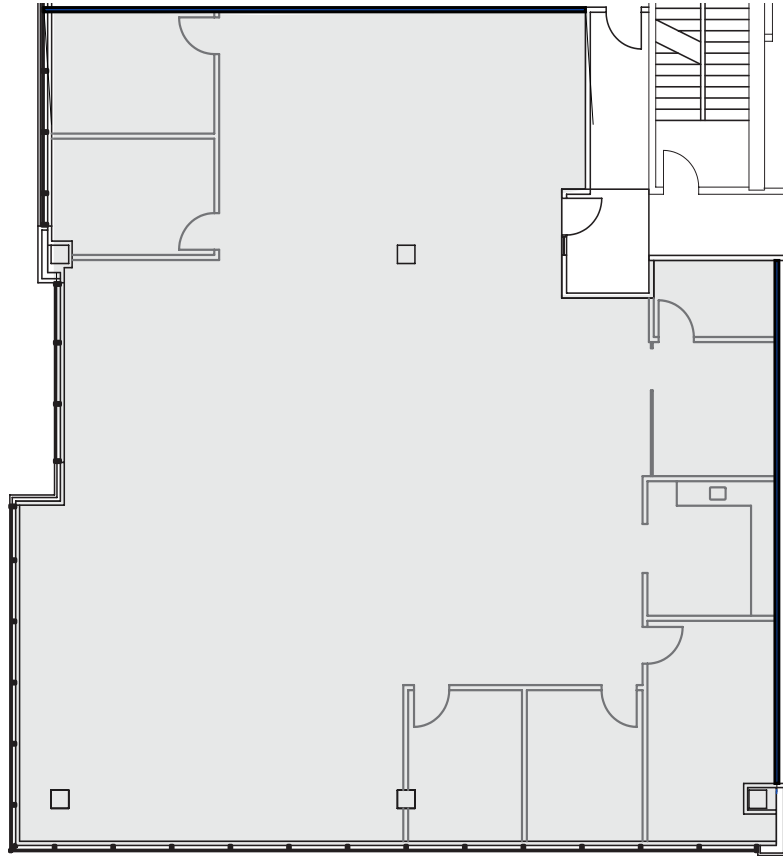


a **KBS** property

15809 BEAR CREEK PARKWAY
REDMOND, WA 98052

SUITE 310 | 4,532 RSF
AS-BUILT PLAN

Available Now



© 2021 CBRE, Inc. All rights reserved. This information has been obtained from sources believed reliable, but has not been verified for accuracy or completeness. You should conduct a careful, independent investigation of the property and verify all information. Any reliance on this information is solely at your own risk. CBRE and the CBRE logo are service marks of CBRE, Inc. All other marks displayed on this document are the property of their respective owners. Photos herein are the property of their respective owners. Use of these images without the express written consent of the owner is prohibited.

SCOTT DAVIS
Executive Vice President
+1 425 462 6912
scott.davis@cbre.com

TIM OWENS
Senior Vice President
+1 425 462 6913
tim.owens@cbre.com

Proudly leased
and managed by

CBRE

CBRE, INC. | 929 108TH AVENUE NE | SUITE 700 | BELLEVUE, WA 98047

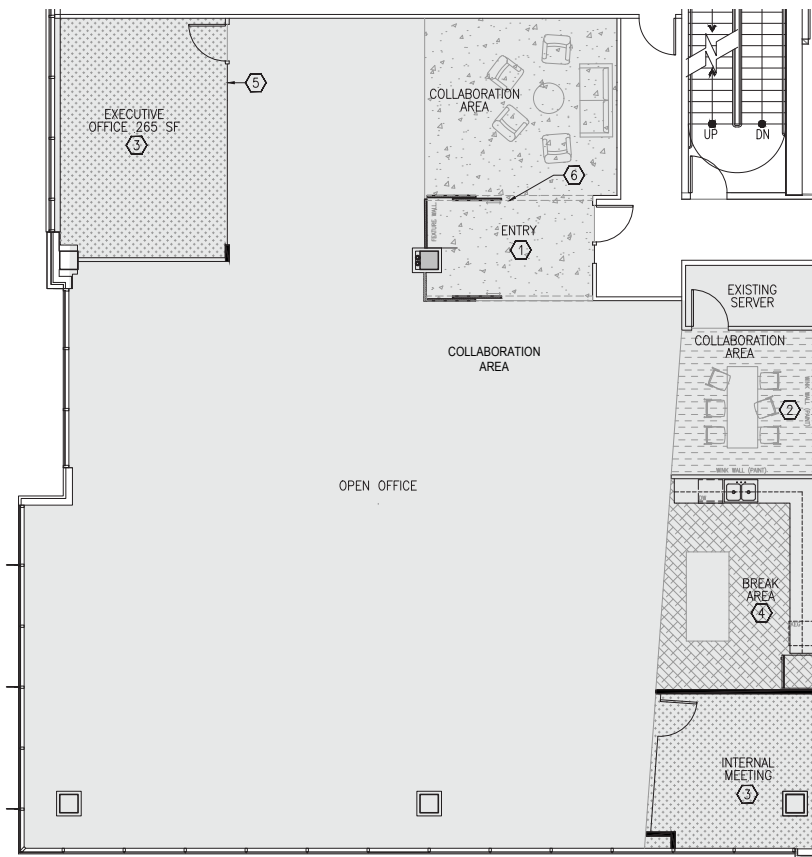
THE OFFICES AT RIVERPARK

a **KBS** property

15809 BEAR CREEK PARKWAY
REDMOND, WA 98052

SUITE 310 | 4,532 RSF CONCEPTUAL PLAN

Available Now



© 2021 CBRE, Inc. All rights reserved. This information has been obtained from sources believed reliable, but has not been verified for accuracy or completeness. You should conduct a careful, independent investigation of the property and verify all information. Any reliance on this information is solely at your own risk. CBRE and the CBRE logo are service marks of CBRE, Inc. All other marks displayed on this document are the property of their respective owners. Photos herein are the property of their respective owners. Use of these images without the express written consent of the owner is prohibited.

SCOTT DAVIS
Executive Vice President
+1 425 462 6912
scott.davis@cbre.com

TIM OWENS
Senior Vice President
+1 425 462 6913
tim.owens@cbre.com

Proudly leased
and managed by

CBRE

CBRE, INC. | 929 108TH AVENUE NE | SUITE 700 | BELLEVUE, WA 98047

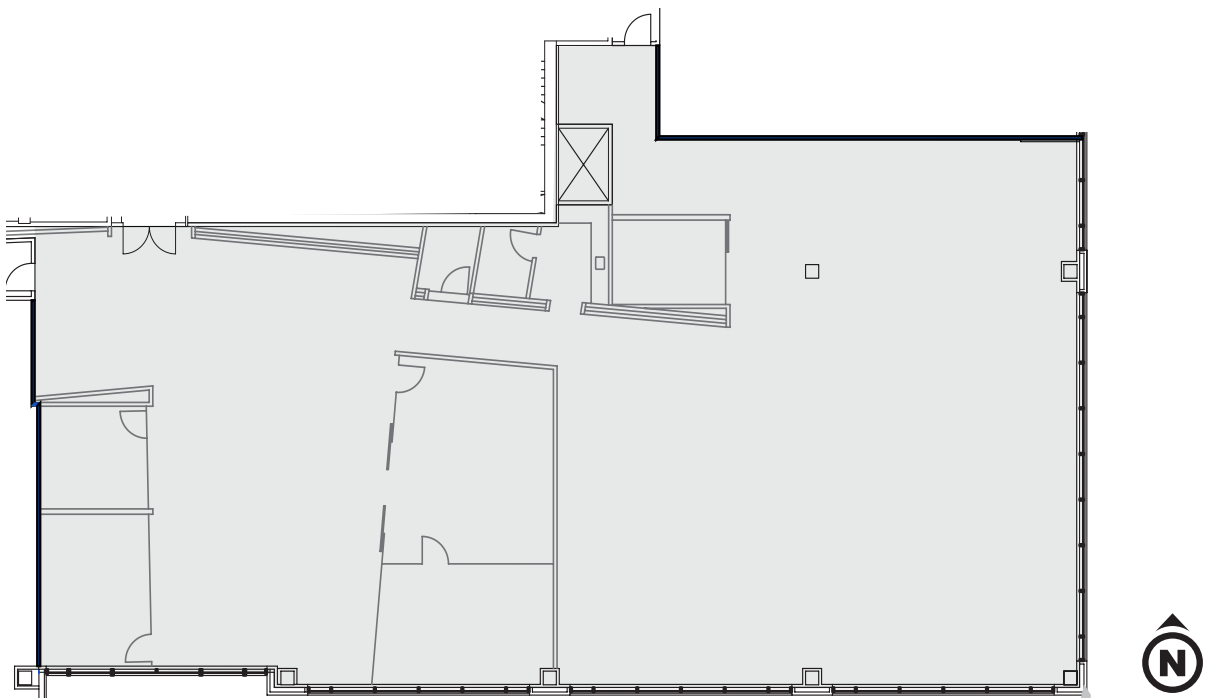


a **KBS** property

15809 BEAR CREEK PARKWAY
REDMOND, WA 98052

SUITE 410 | 7,617 RSF
AS-BUILT PLAN

Available Now



© 2021 CBRE, Inc. All rights reserved. This information has been obtained from sources believed reliable, but has not been verified for accuracy or completeness. You should conduct a careful, independent investigation of the property and verify all information. Any reliance on this information is solely at your own risk. CBRE and the CBRE logo are service marks of CBRE, Inc. All other marks displayed on this document are the property of their respective owners. Photos herein are the property of their respective owners. Use of these images without the express written consent of the owner is prohibited.

SCOTT DAVIS
Executive Vice President
+1 425 462 6912
scott.davis@cbre.com

TIM OWENS
Senior Vice President
+1 425 462 6913
tim.owens@cbre.com

Proudly leased
and managed by

CBRE

CBRE, INC. | 929 108TH AVENUE NE | SUITE 700 | BELLEVUE, WA 98047

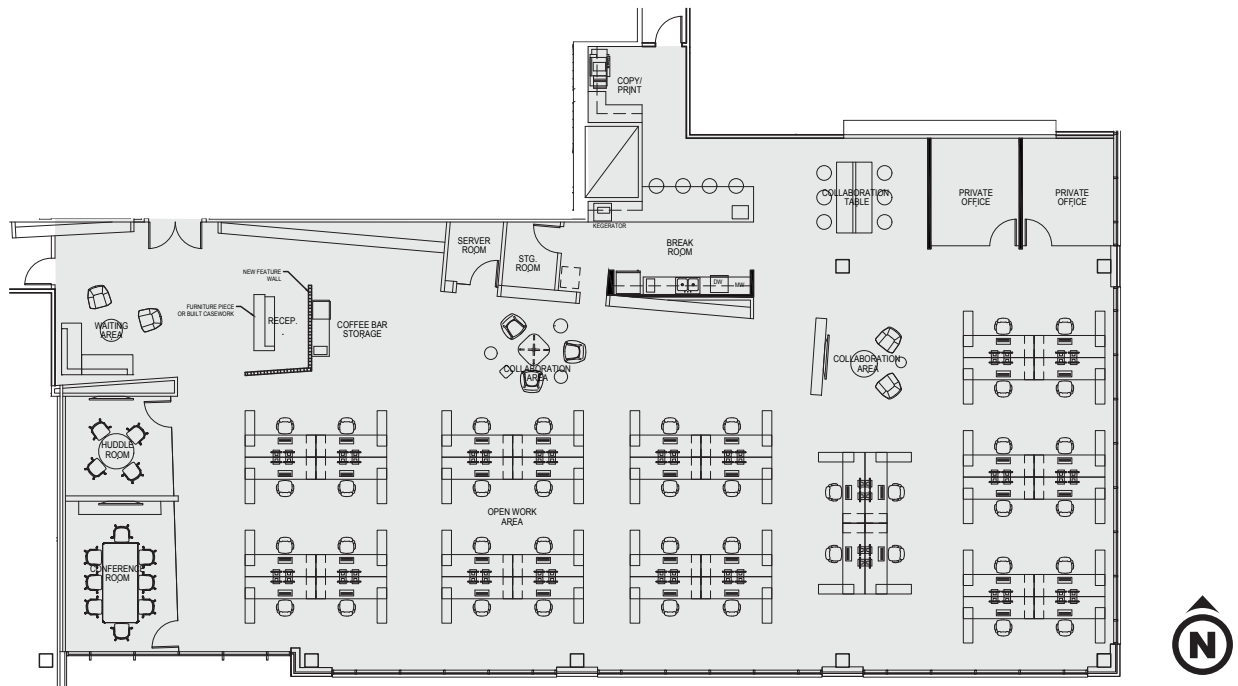
THE OFFICES AT RIVERPARK

a **KBS** property

15809 BEAR CREEK PARKWAY
REDMOND, WA 98052

SUITE 410 | 7,617 RSF CONCEPTUAL PLAN

Available Now



© 2021 CBRE, Inc. All rights reserved. This information has been obtained from sources believed reliable, but has not been verified for accuracy or completeness. You should conduct a careful, independent investigation of the property and verify all information. Any reliance on this information is solely at your own risk. CBRE and the CBRE logo are service marks of CBRE, Inc. All other marks displayed on this document are the property of their respective owners. Photos herein are the property of their respective owners. Use of these images without the express written consent of the owner is prohibited.

SCOTT DAVIS
Executive Vice President
+1 425 462 6912
scott.davis@cbre.com

TIM OWENS
Senior Vice President
+1 425 462 6913
tim.owens@cbre.com

Proudly leased
and managed by

CBRE

CBRE, INC. | 929 108TH AVENUE NE | SUITE 700 | BELLEVUE, WA 98047