



- **Lease Rate: \$40/SF/YR**
- 1,000-5,500 total SF
- Lease type: NNN
- Zoning: CCT-1

This 4 star retail development offers excellent exposure with a traffic count of 28,500 vehicles per day. Located on desirable 4th Street North at the entrance of Downtown St. Pete. Permitted and accessory uses include retail, office, restaurant, etc. Up to 5,500 SF will be available upon completion in Q4 2018. Excellent parking ratio of 7/1,000 with available patio seating for a restaurant user. This is an incredible opportunity for maximum exposure in St. Petersburg.

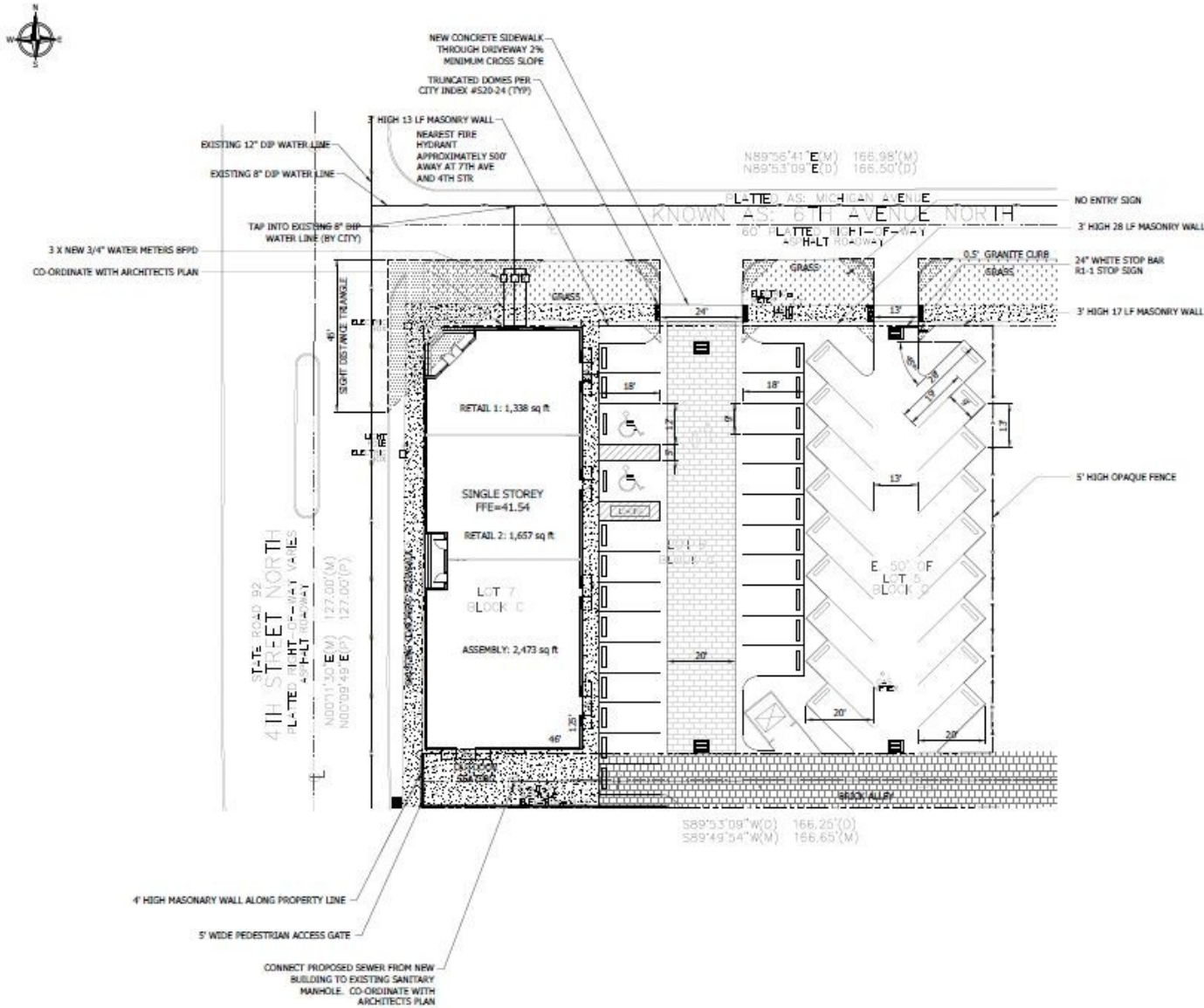
Contact:

Ned Willis, Broker
727.823.1230 ext. 230
C: 727.481.3356
NWillis@VectorRealty.com

Doug Studer, Agent
727.823.1230 ext. 235
C: 813.507.7946
DStuder@VectorRealty.com

125 5TH STREET SOUTH, SUITE 201, ST. PETERSBURG, FL 33701 | 727.823.1230 | WWW.VECTORREALTY.COM

Site Plan



No warranties or representations, express or implied, are made as to the accuracy of the information contained herein, and same is submitted subject to omissions, change of price, rental or other conditions, withdrawal without notice, and to any other limitations imposed by our principals.

REVISED: 5/23/18



No warranties or representations, express or implied, are made as to the accuracy of the information contained herein, and same is submitted subject to omissions, change of price, rental or other conditions, withdrawal without notice, and to any other limitations imposed by our principals.

REVISED: 5/23/18