

Unique Office Building with Atrium

120 Pleasant Hill Avenue, Sebastopol, CA



±496 SF, ±588 SF and ±1,106 SF Available For Lease

I am pleased to offer the following suites:

Rental Rate:
\$1.65/SF Full Service

Suite 190 ±1,106 SF
Suite 320 ±588 SF
Suite 330 ±496 SF

- Suite 190 - First floor entrance, three private offices, kitchen, storage room and open area for work stations
- Suite 320 - Includes two private offices and reception/waiting area
- Suite 330 - One large open room
- Class A Office Building with central elevator
- Common area includes slate tile, private meeting room available to all tenants and kitchen area
- Private showers in restroom area for athletic conscious employees

Move in this Week!

Barry Palma, CCIM Sr Managing Director 707.583.8410 bpalma@newmarkccarey.com CA RE License #00901364

**Newmark
Cornish & Carey**

2455 Bennett Valley Road , Suite C200, Santa Rosa, CA 95404

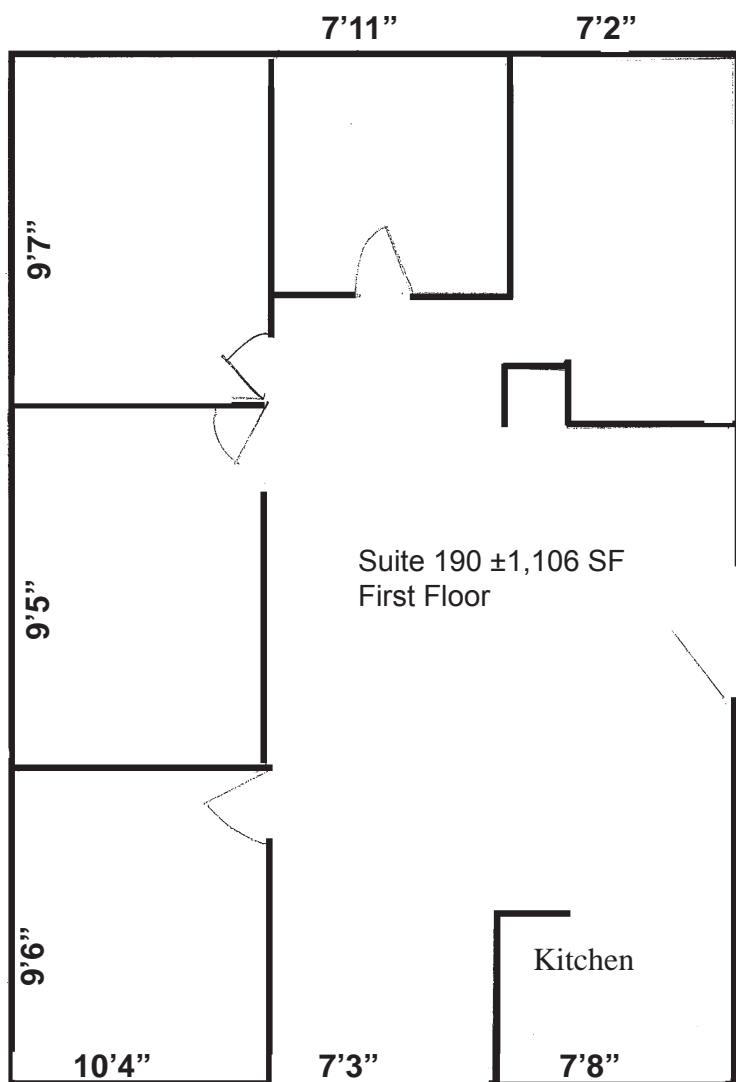
www.newmarkccarey.com

120 Pleasant Hill Avenue

Sebastopol, CA



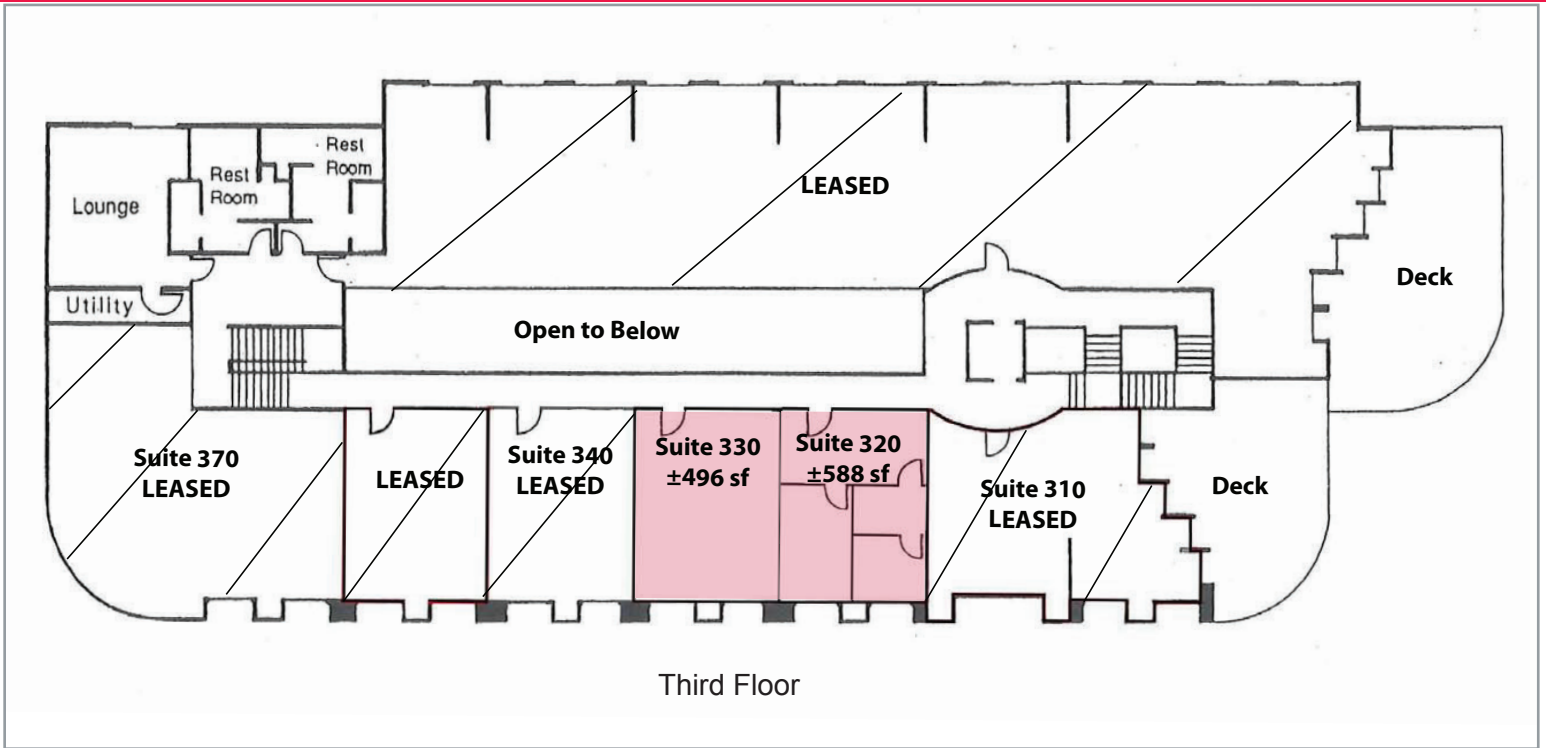
- Landscaped Atrium and skylights
- Next door to The French Garden Restaurant, across the street from a deli, hairstylist and minutes to Downtown services
- Great for professional office or therapists
- Professionally managed



All measurements are approximate and should be confirmed.

120 Pleasant Hill Avenue

Sebastopol, CA



Barry Palma, CCIM Sr Managing Director 707.583.8410 bpalma@newmarkccarey.com CA RE License #00901364

**Newmark
Cornish & Carey**

2455 Bennett Valley Road , Suite C200, Santa Rosa, CA 95404

www.newmarkccarey.com