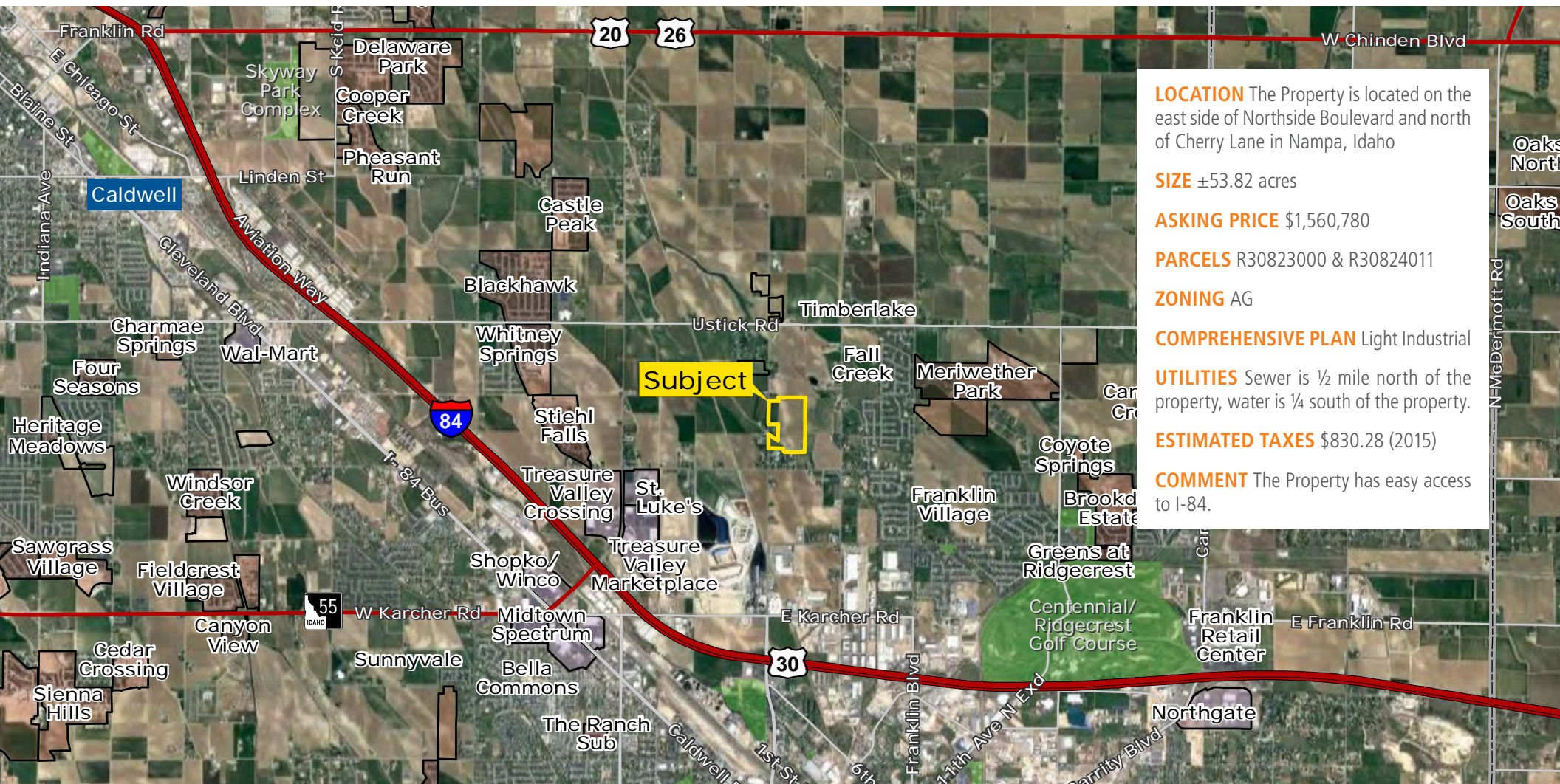


# GARBER 54

EXCLUSIVE LISTING | NAMPA, IDAHO



**LOCATION** The Property is located on the east side of Northside Boulevard and north of Cherry Lane in Nampa, Idaho

**SIZE** ±53.82 acres

**ASKING PRICE** \$1,560,780

**PARCELS** R30823000 & R30824011

**ZONING** AG

**COMPREHENSIVE PLAN** Light Industrial

**UTILITIES** Sewer is ½ mile north of the property, water is ¼ south of the property.

**ESTIMATED TAXES** \$830.28 (2015)

**COMMENT** The Property has easy access to I-84.

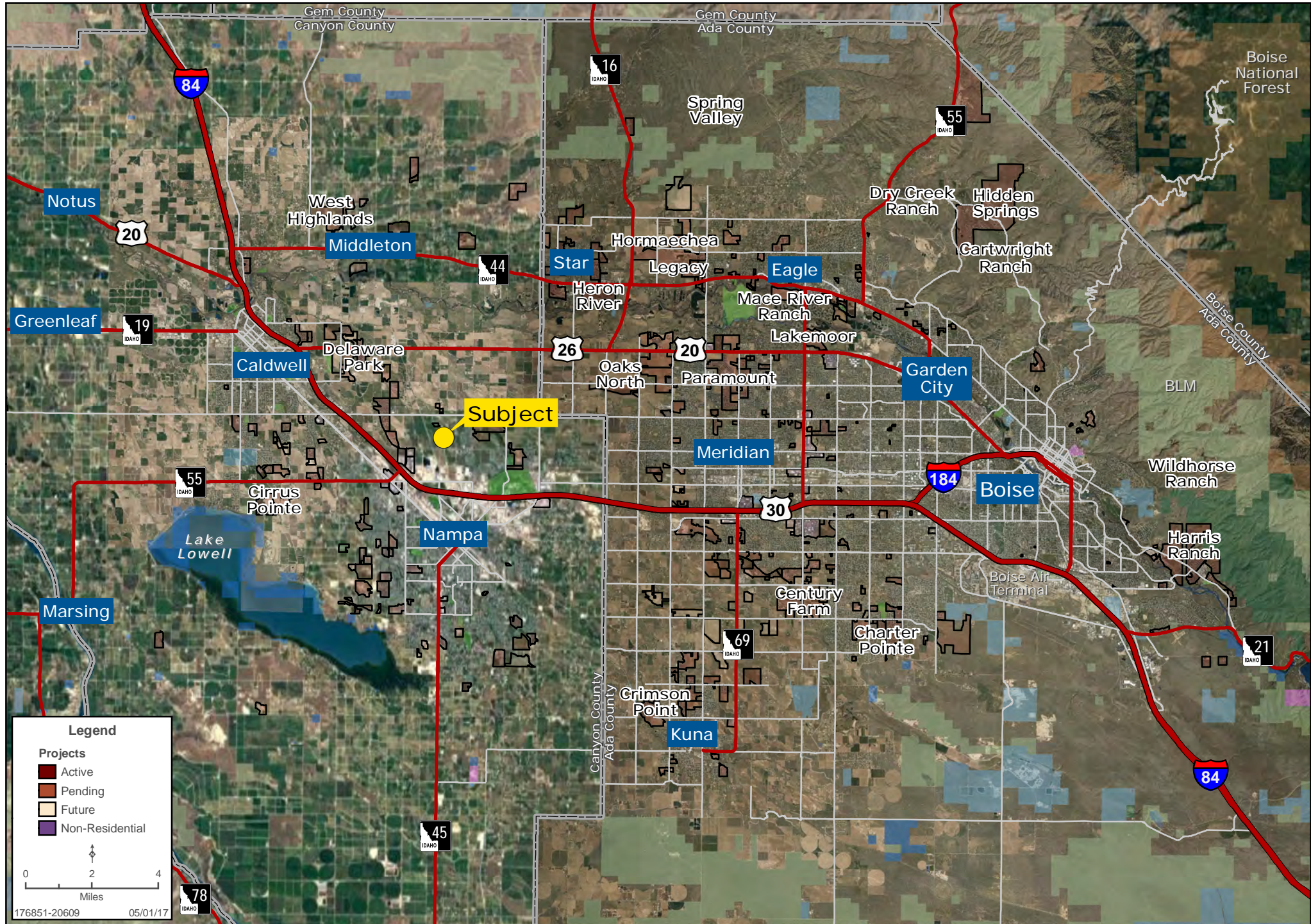
Tyler Johnson | [tjohnson@landadvisors.com](mailto:tjohnson@landadvisors.com)

3597 E Monarch Sky Ln, Suite F-240 Meridian, ID 83646 | ph. 208.866.3579 | [www.landadvisors.com](http://www.landadvisors.com)

The information contained herein is from sources deemed reliable. We have no reason to doubt its accuracy but do not guarantee it. It is the responsibility of the person reviewing this information to independently verify it. This package is subject to change, prior sale or complete withdrawal. IDCanyon176851-1.2.18

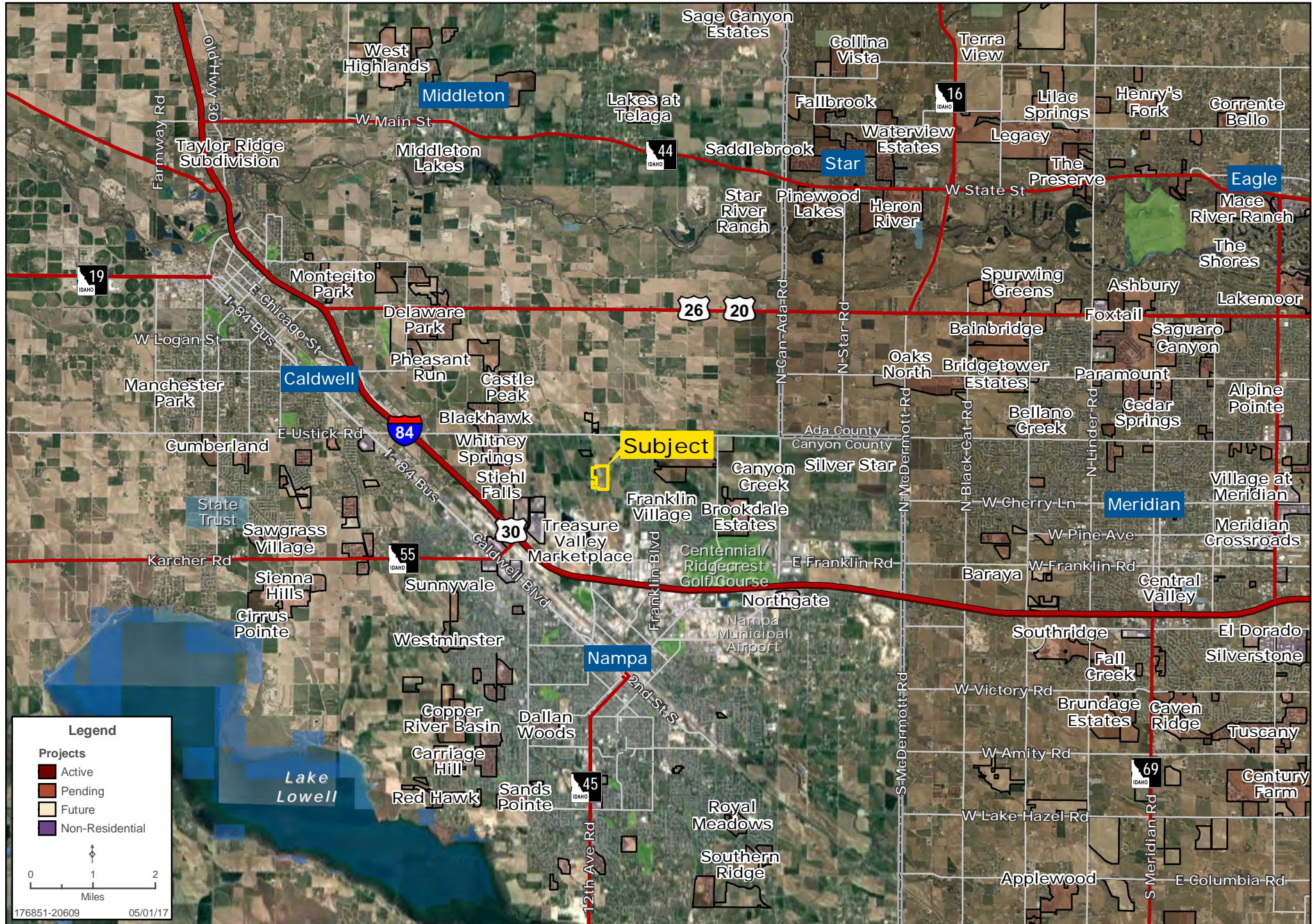
# METRO MAP

Tyler Johnson | 208.366.8700 | www.landadvisors.com



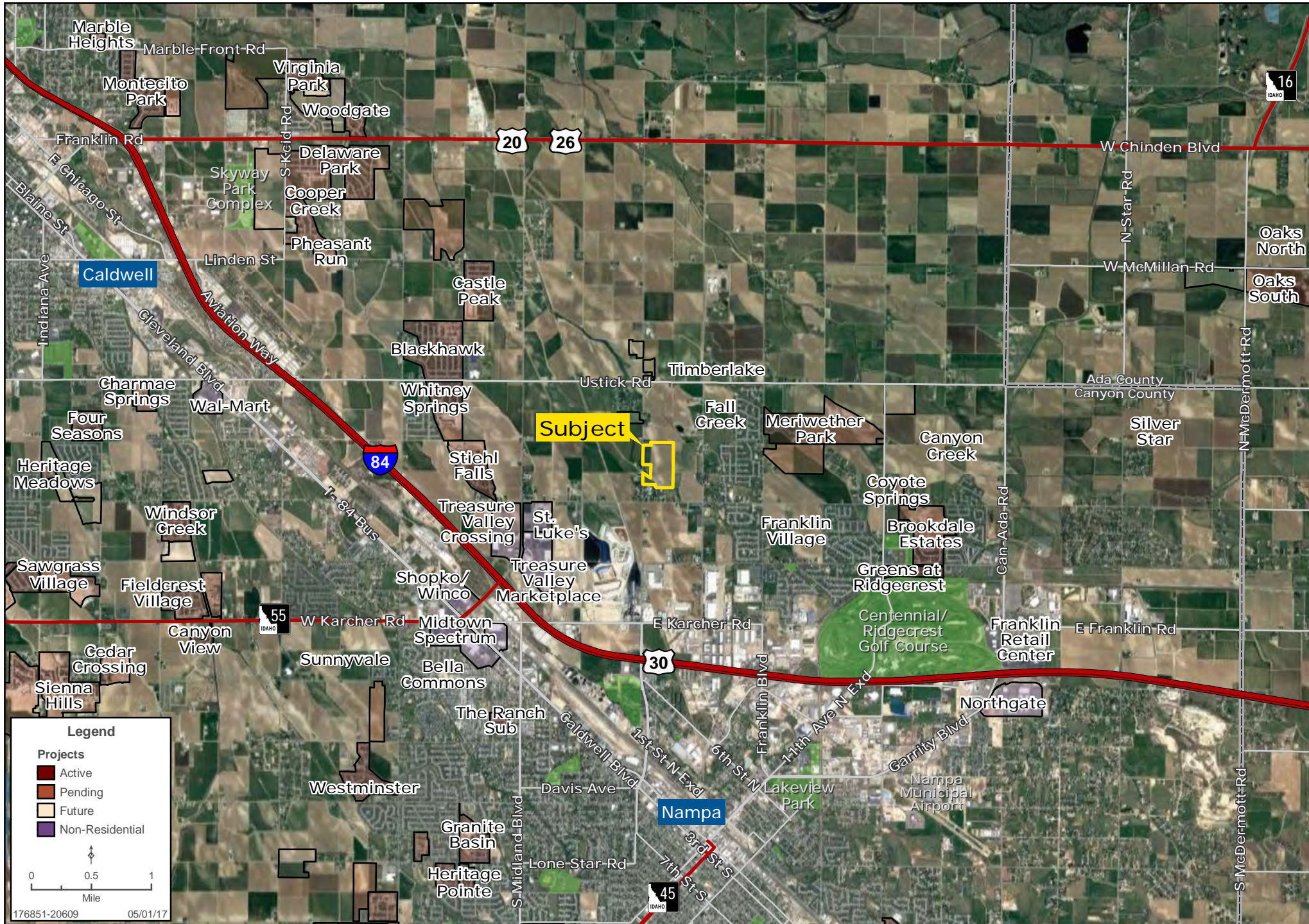
# REGIONAL MAP

Tyler Johnson | 208.366.8700 | www.landadvisors.com



# SURROUNDING DEVELOPMENT MAP

Tyler Johnson | 208.366.8700 | www.landadvisors.com



**Legend**

**Projects**

- Active
- Pending
- Future
- Non-Residential

0 0.5 1  
Mile

176851-20609 05/01/17

# PROPERTY DETAIL MAP

Tyler Johnson | 208.366.8700 | www.landadvisors.com

