



1888 Route 70

Cherry Hill Pointe

Cherry Hill, New Jersey 08003

Property Description

- 25,000± SF retail free-standing strip center with (2) 2,000± SF units available
- Located in busy retail/office corridor along Route 70
- Built in 2005
- Situated on 2.31± acres
- Block 470.02/Lot 11
- Ample parking available
- Excellent visibility on heavily traveled Route 70 - 55,686 VPD
- Rear entrance to Greentree Road for easy return trip access

Demographics

	1 mi	3 mi	5 mi
Population	7,436	79,885	219,043
Households	2,894	31,082	86,533
Median HH Income	\$104,748	\$95,717	\$90,270

Join Current Retailers:

Relax the Back, The South Jersey Hand Center, P.C., EZ Drop Cleaners, Tiffany Nails & Spa, William Robert Salon, John M. Bednar MD Orthopaedic

For more information:

Jeff Sloan

+1 610 937 0616
jeff.sloan@naimertz.com

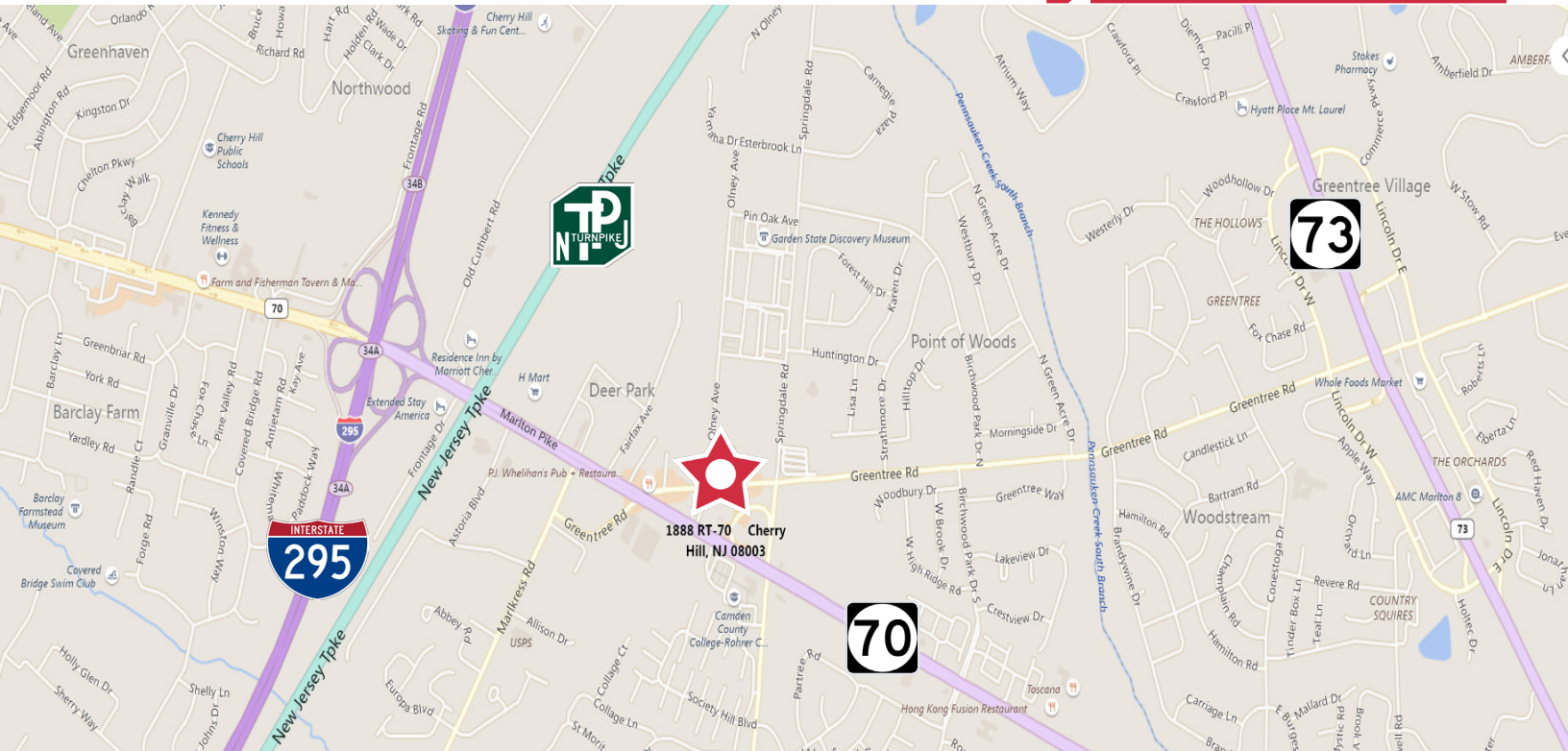
Luke Sloan

+1 610 937 4594
luke.sloan@naimertz.com

Rental Rate:

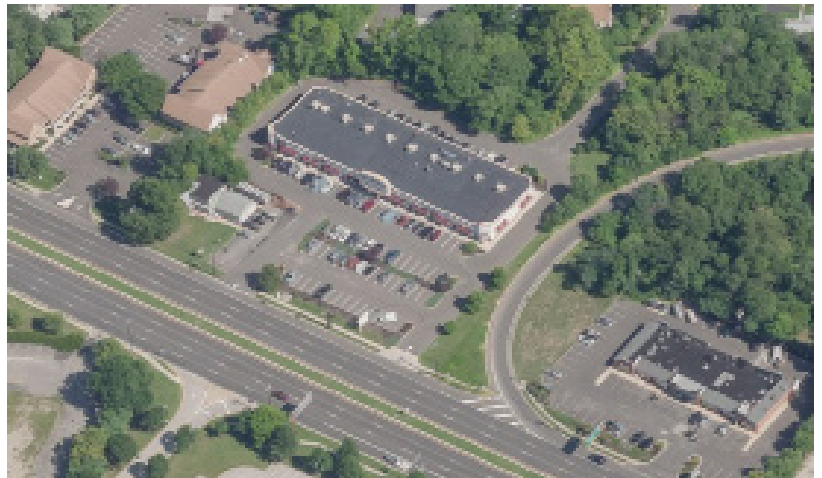
(2) 2,000 SF Units - \$25/PSF Net of CAM

NO WARRANTY OR REPRESENTATION, EXPRESS OR IMPLIED, IS MADE AS TO THE ACCURACY OF THE INFORMATION CONTAINED HEREIN, AND THE SAME IS SUBMITTED SUBJECT TO ERRORS, OMISSIONS, CHANGE OF PRICE, RENTAL OR OTHER CONDITIONS, PRIOR SALE, LEASE OR FINANCING, OR WITHDRAWAL WITHOUT NOTICE, AND OF ANY SPECIAL LISTING CONDITIONS IMPOSED BY OUR PRINCIPALS NO WARRANTIES OR REPRESENTATIONS ARE MADE AS TO THE CONDITION OF THE PROPERTY OR ANY HAZARDS CONTAINED THEREIN ARE ANY TO BE IMPLIED.



Location Description

- Located in a high density retail/office area
- Directly across from Camden County College Cherry Hill Campus
- Less than 3 miles to I-295
- 10.3 miles to Ben Frankling Bridge into Philadelphia
- Easy access to Route 73



For more information:

Jeff Sloan

+1 610 937 0616

jeff.sloan@naimertz.com

Luke Sloan

+1 610 937 4594

luke.sloan@naimertz.com