
Broadway Square

635 BROADWAY, 645-651 BROADWAY, 10 MAPLE | SONOMA

Frontage Road Visibility On Broadway

- Located a Few Blocks from Sonoma Square
- On-site parking
- Zoned for Commercial use
- In the heart of Sonoma surrounded by businesses, restaurants and retail shops



LEASEPFI
COMMERCIAL

Nicholas Zabelin | 415.883.2736 x326 | nzabelin@leasepfi.com

Broadway Square

635 BROADWAY, 645-651 BROADWAY, 10 MAPLE | SONOMA



Front of 645 Broadway building

Lease Information

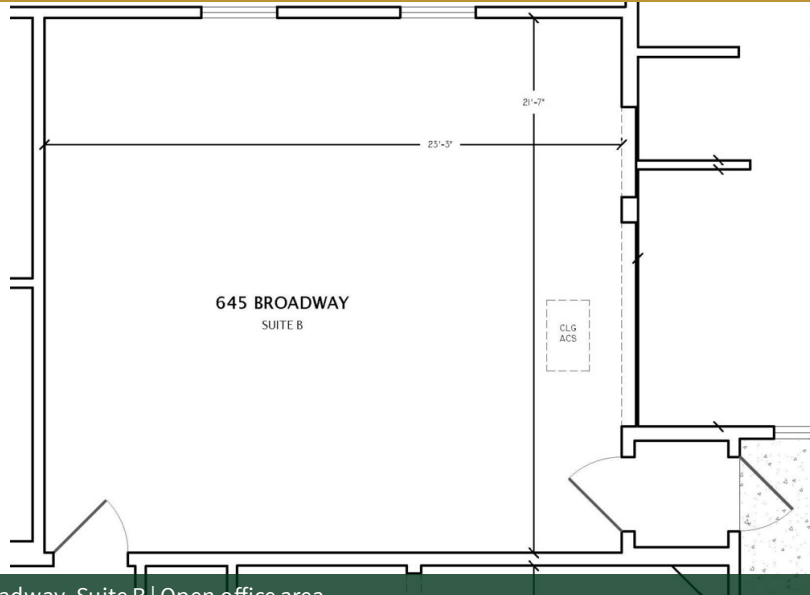
Lease Type:	Full Service	Lease Term:	Negotiable
Total Space:	325 - 731 SF	Lease Rate:	\$3.30 SF/month

Available Spaces

Suite	Size (SF)	Lease Type	Lease Rate	Description
651 D	325 SF	Full Service	\$3.30 SF/month	First floor private office space with double door entry and a private parking lot on site.
645-B	629 SF	Full Service	\$3.30 SF/month	Large open room.
10 - 301	731 SF	Full Service	\$3.30 SF/month	Efficient work area, one private office.

Broadway Square

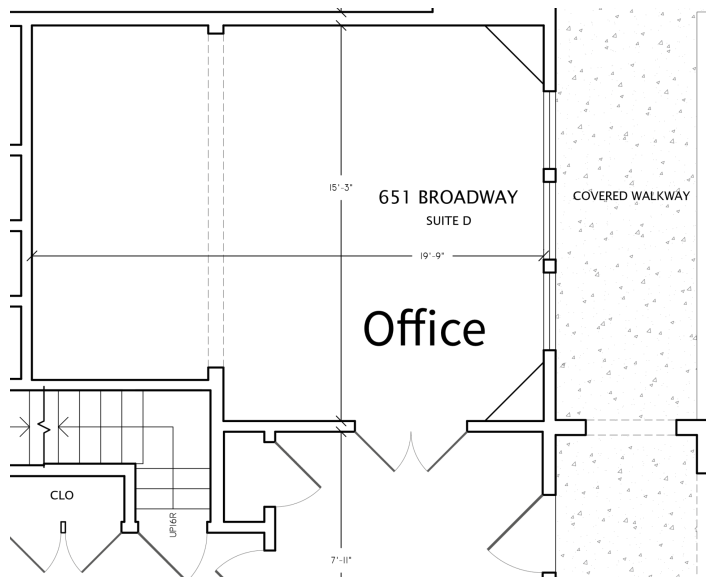
635 BROADWAY, 645-651 BROADWAY, 10 MAPLE | SONOMA



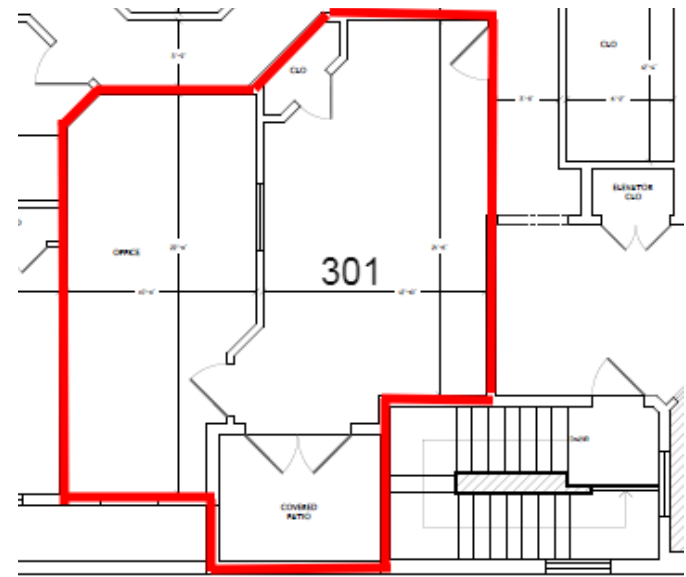
645 Broadway, Suite B | Open office area.



Rear of 645 - 651 Broadway building.



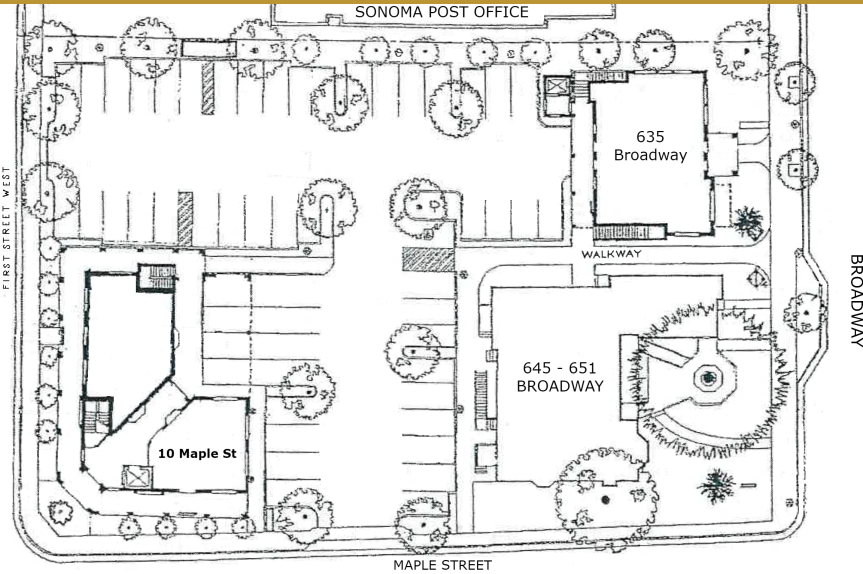
651 Broadway, Suite D | Window lined open office area.



10 Maple, Suite 301 | Private office with reception area, storage closet, and private patio.

Broadway Square

635 BROADWAY, 645-651 BROADWAY, 10 MAPLE | SONOMA



Front entrance to 635 Broadway.



Front entrance to 651 Broadway.



Street view of 10 Maple Street.



Rear parking lot for 635 Broadway, 645 - 651 Broadway, and side lot for 10 Maple.

Broadway Square

635 BROADWAY, 645-651 BROADWAY, 10 MAPLE | SONOMA

