



Map data ©2019 Imagery ©2019 , DigitalGlobe, USDA Farm Service Agency

## South 4th Street

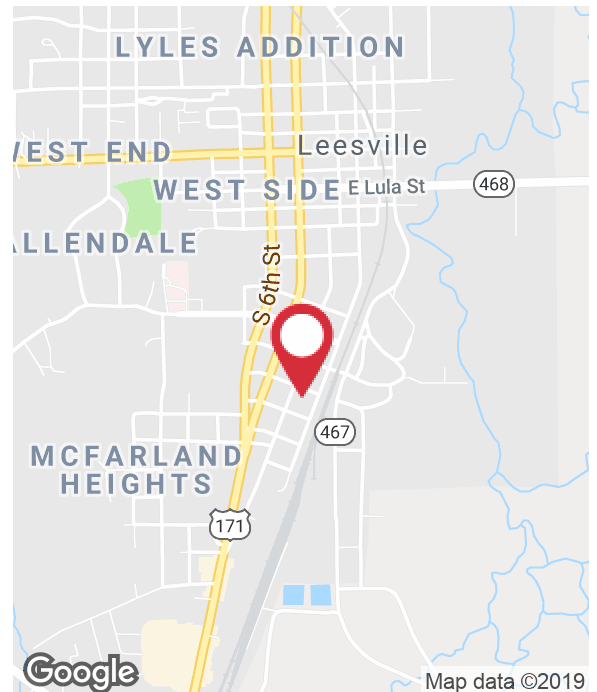
Leesville, Louisiana 71446

### Property Highlights

- ±2.45 acres for sale in Leesville, Louisiana
- Additional land can be purchased fronting Highway 171
- Great development potential
- Excellent location for office or multi-family
- Located less than half a mile from Louisiana Lanes Fun Center

### Sale Price

\$395,000



Map data ©2019

For more information

**Stuart Peterson**

O: 225 295 0800 | C: 337 274 8222  
speterson@latterblum.com

**Austin Bain**

O: 225 295 0800 | C: 225 978 9966  
austinbain@latterblum.com

CALL OR EMAIL FOR MORE INFORMATION

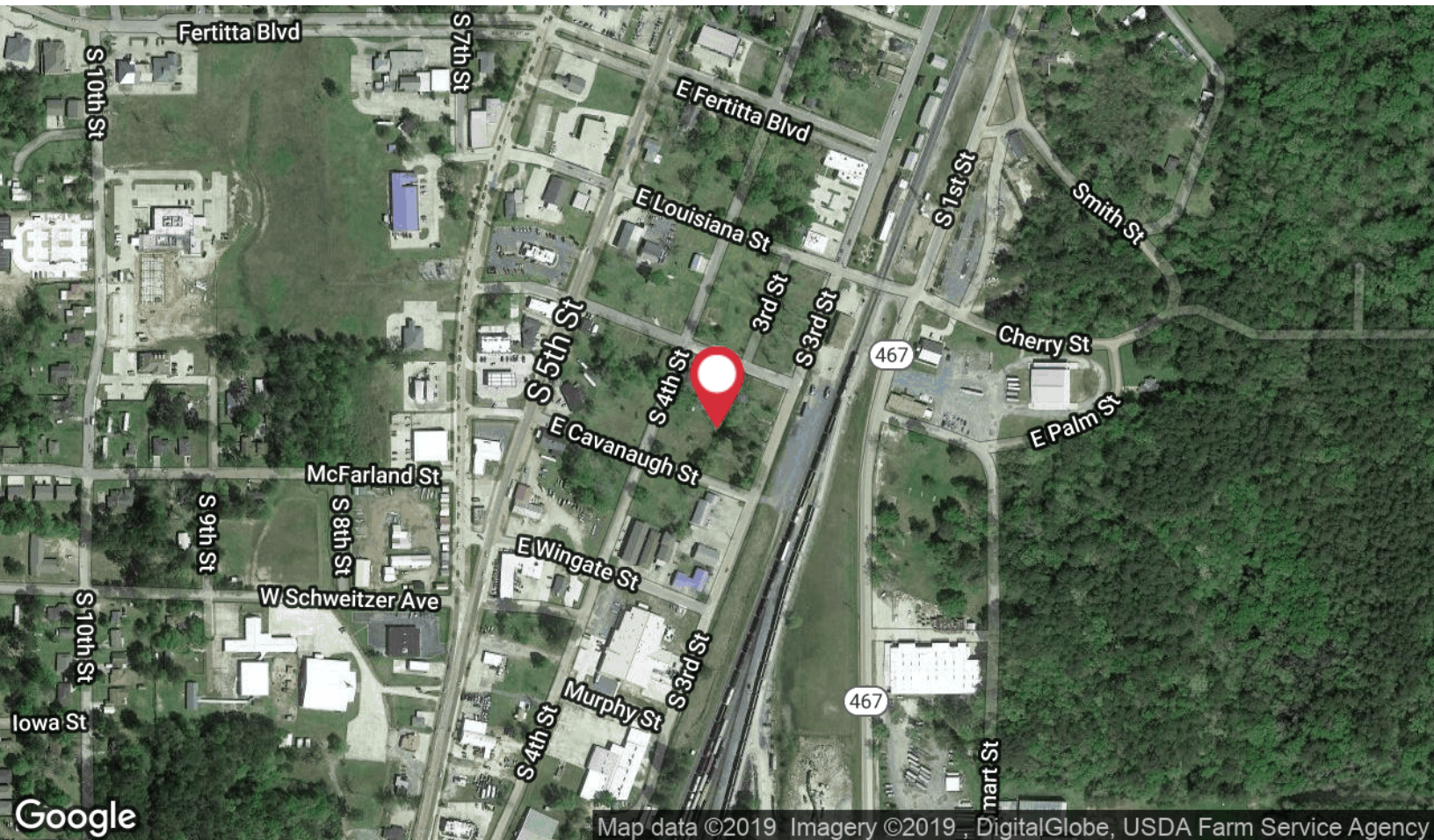
NO WARRANTY OR REPRESENTATION, EXPRESS OR IMPLIED, IS MADE AS TO THE ACCURACY OF THE INFORMATION CONTAINED HEREIN, AND THE SAME IS SUBMITTED SUBJECT TO ERRORS, OMISSIONS, CHANGE OF PRICE, RENTAL OR OTHER CONDITIONS, PRIOR SALE, LEASE OR FINANCING, OR WITHDRAWAL WITHOUT NOTICE, AND OF ANY SPECIAL LISTING CONDITIONS IMPOSED BY OUR PRINCIPALS NO WARRANTIES OR REPRESENTATIONS ARE MADE AS TO THE CONDITION OF THE PROPERTY OR ANY HAZARDS CONTAINED THEREIN ARE ANY TO BE IMPLIED. LICENSED IN LOUISIANA.

1700 City Farm Drive  
Baton Rouge, LA 70806  
225 295 0800 tel  
**latterblum.com**

June 12, 2019



## Location Maps





## Retailer Map

