

Eastlake Office Suites For Lease

2371 Fenton Street, Chula Vista, CA



- Eastlake Office Building of Approximately 37,329 RSF.
- Spaces Available from +/- 1,100 to 29,474 RSF.
- Class A Touches including Marble Flooring and Extensive Window Line.
- Building Built in 2000 Renovated and Upgraded in 2007.
- Elevator Served.
- Easy Access to SR-125.
- Near Target/Lowes Center, Kohl's, US Post Office.
- Restaurants and Retail Nearby.



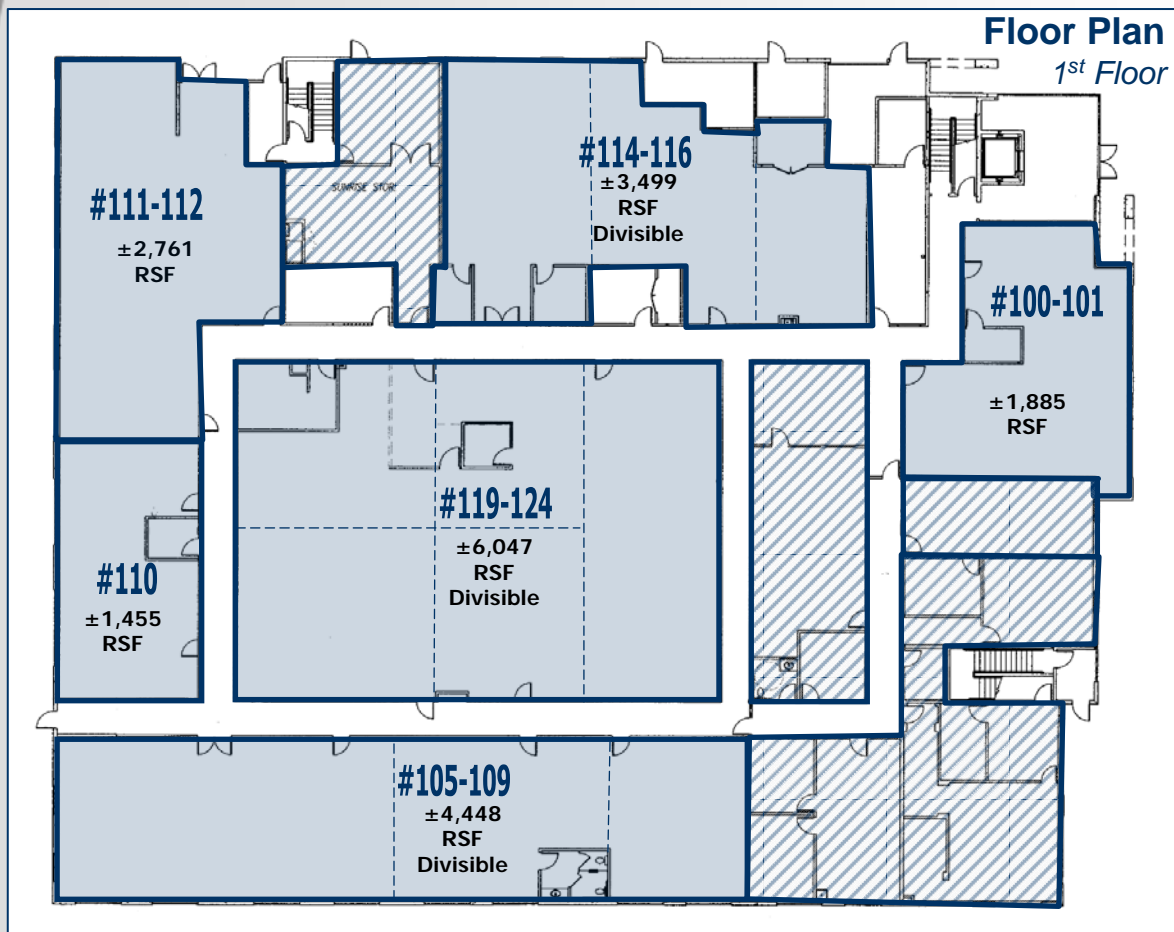
Voit

Real Estate Services



TRACY C. CLARK, SENIOR VICE PRESIDENT
(858) 458-3339 [direct] ♦ (858) 453-1981 [fax]
tclark@voitco.com ♦ Tracy Clark License #00641800
4370 La Jolla Village Drive, #990, San Diego, CA 92122

2371 Fenton Street, Chula Vista, CA



 = Leased



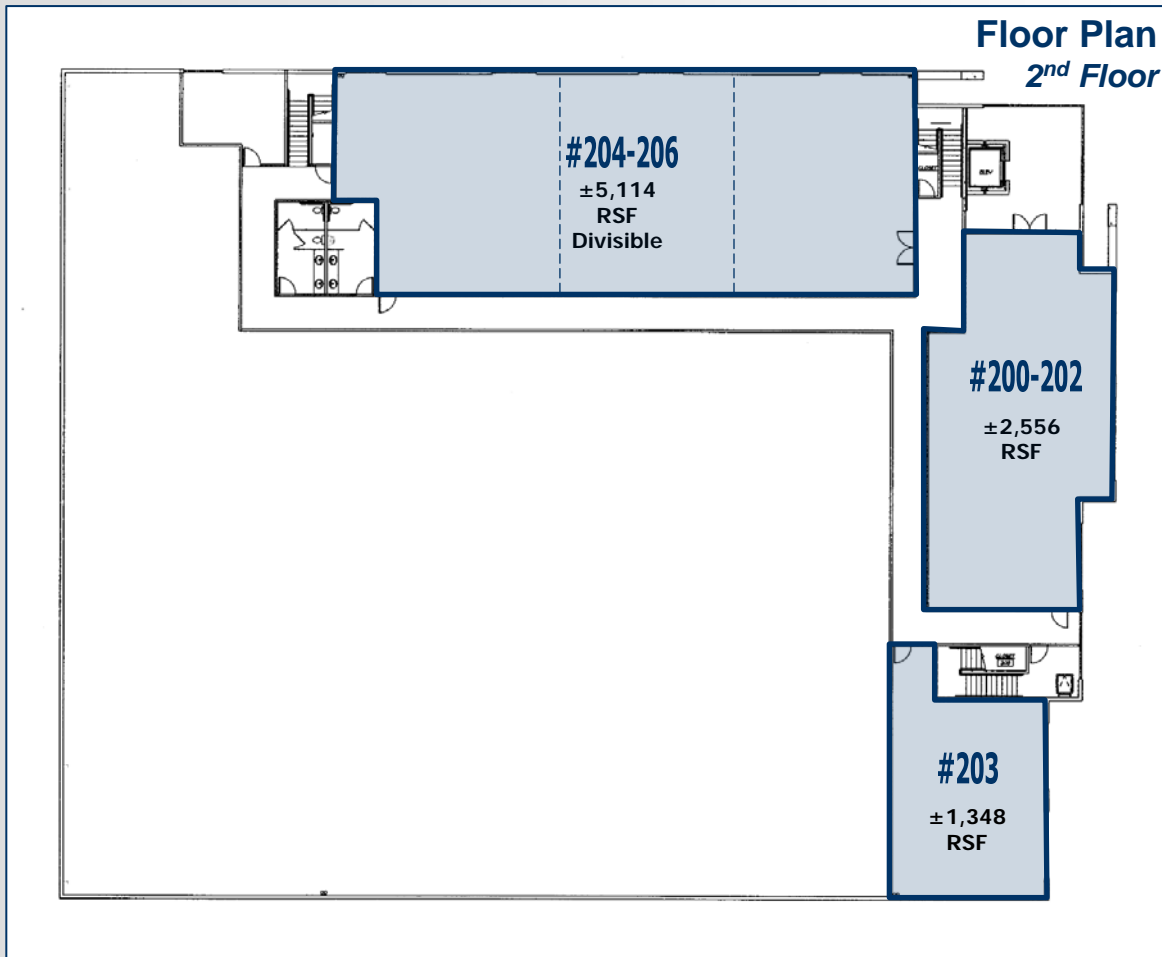
Voit

Real Estate Services

CORFAC
International

TRACY C. CLARK, SENIOR VICE PRESIDENT
(858) 458-3339 [direct] ♦ (858) 453-1981 [fax]
tclark@voitco.com ♦ Tracy Clark License #00641800
4370 La Jolla Village Drive, #990, San Diego, CA 92122

2371 Fenton Street, Chula Vista, CA



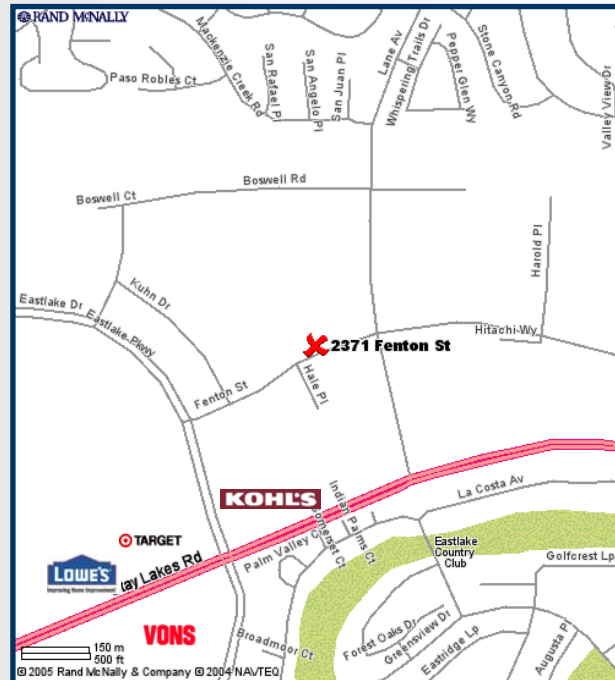
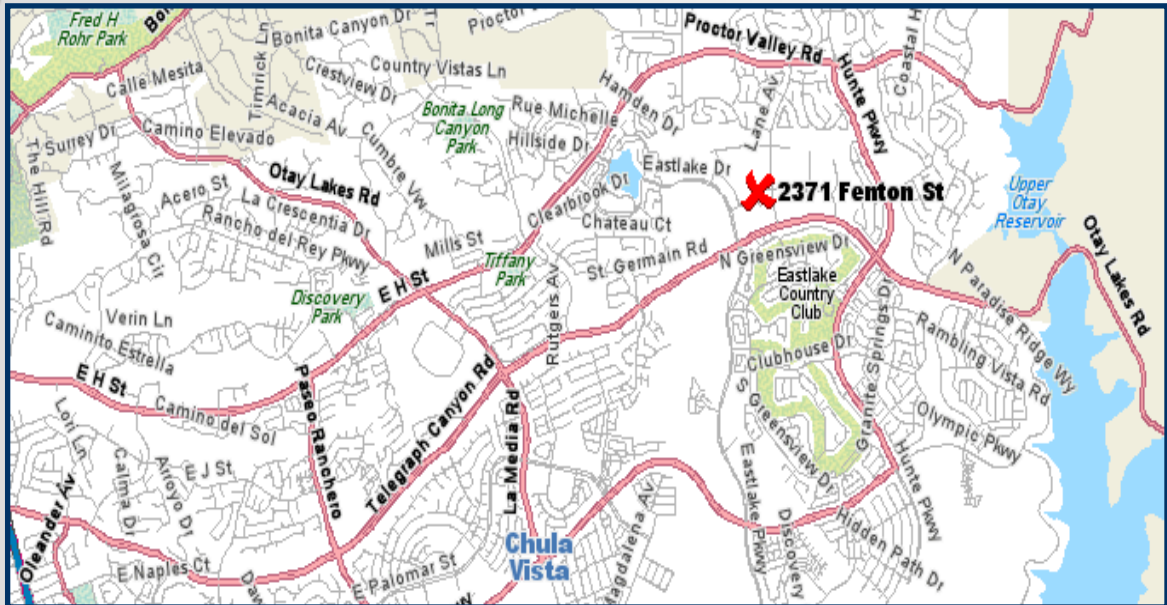
Voit

Real Estate Services



TRACY C. CLARK, SENIOR VICE PRESIDENT
(858) 458-3339 [direct] ♦ (858) 453-1981 [fax]
tclark@voitco.com ♦ Tracy Clark License #00641800
4370 La Jolla Village Drive, #990, San Diego, CA 92122

2371 Fenton Street, Chula Vista, CA



Voith

Real Estate Services



TRACY C. CLARK, SENIOR VICE PRESIDENT

(858) 458-3339 [direct] ♦ (858) 453-1981 [fax]

tclark@voitco.com ♦ Tracy Clark License #00641800

4370 La Jolla Village Drive, #990, San Diego, CA 92122