



FOR LEASE

CBCSUNCOAST.COM

SURF CITY FLEX SPACE

111 Sea Oaks Drive
Surf City, NC 28445

AVAILABLE SPACE
1,800 - 7,200 SF*

AREA

Located between US Hwy 17 and Topsail Island, just off NC Hwy 50 on the Surf City Mainland. 0.5 Miles from Surf City Bridge on NC Hwy 50. Surf City is located just off US Hwy 17 almost exactly halfway between Wilmington & Jacksonville.

CONTACT INFO

Glenn Imboden
910 520 5223
glenn.imboden@cbcsuncoast.com

Allan Fox
910 612 8840
allan.fox@cbcsuncoast.com

COLDWELL BANKER COMMERCIAL
SUN COAST PARTNERS
1430 Commonwealth Drive, Suite 102
Wilmington, NC 28403
910.350.1200



**COLDWELL
BANKER
COMMERCIAL**

SUN COAST PARTNERS



SURF CITY FLEX SPACE

111 Sea Oaks Drive, Surf City, NC 28445

SALE



PROPERTY OVERVIEW

New construction of high demand flex space in Surf City just off NC Highway 50. Building is 7200 SF* and divisible up to four (4) units at 1800 SF* each. Standard buildout for each 1800 SF* unit to include 216 SF* lobby / office and one (1) unisex restroom (ADA Compliant). *Custom buildouts to be priced on a case-by-case basis.

Additional on-site parcel available for Build-to-Suit with up to 3,600 SF* building footprint (can be multi-story if desired).

This is the first Flex Development to be constructed within the US 17 corridor between Porters Neck and Jacksonville in several years. Surf City zoning allows many uses "by right" that would not be permitted by Pender County.

CBCSUNCOAST.COM

Glenn Imboden
910 520 5223
glenn.imboden@cbcsuncoast.com

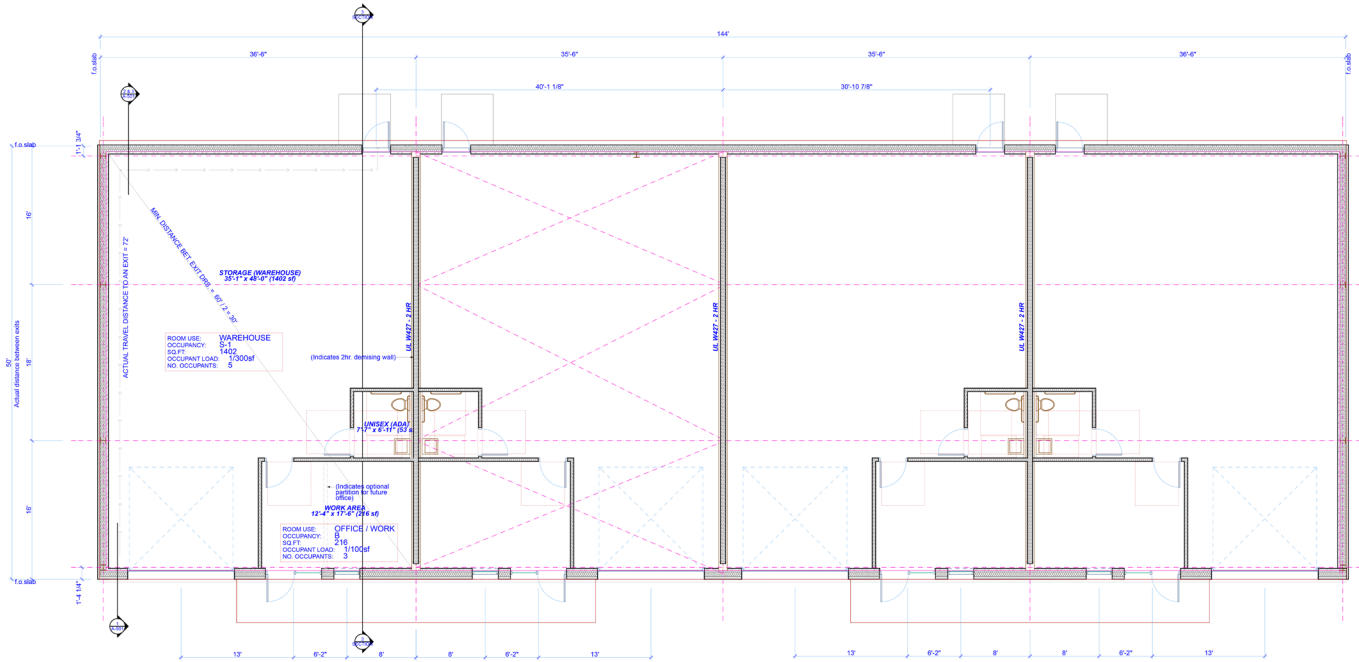
Allan Fox
910 612 8840
allan.fox@cbcsuncoast.com



SURF CITY FLEX SPACE

111 Sea Oaks Drive, Surf City, NC 28445

SALE



CBCSUNCOAST.COM

Glenn Imboden
910 520 5223
glenn.imboden@cbcsuncoast.com

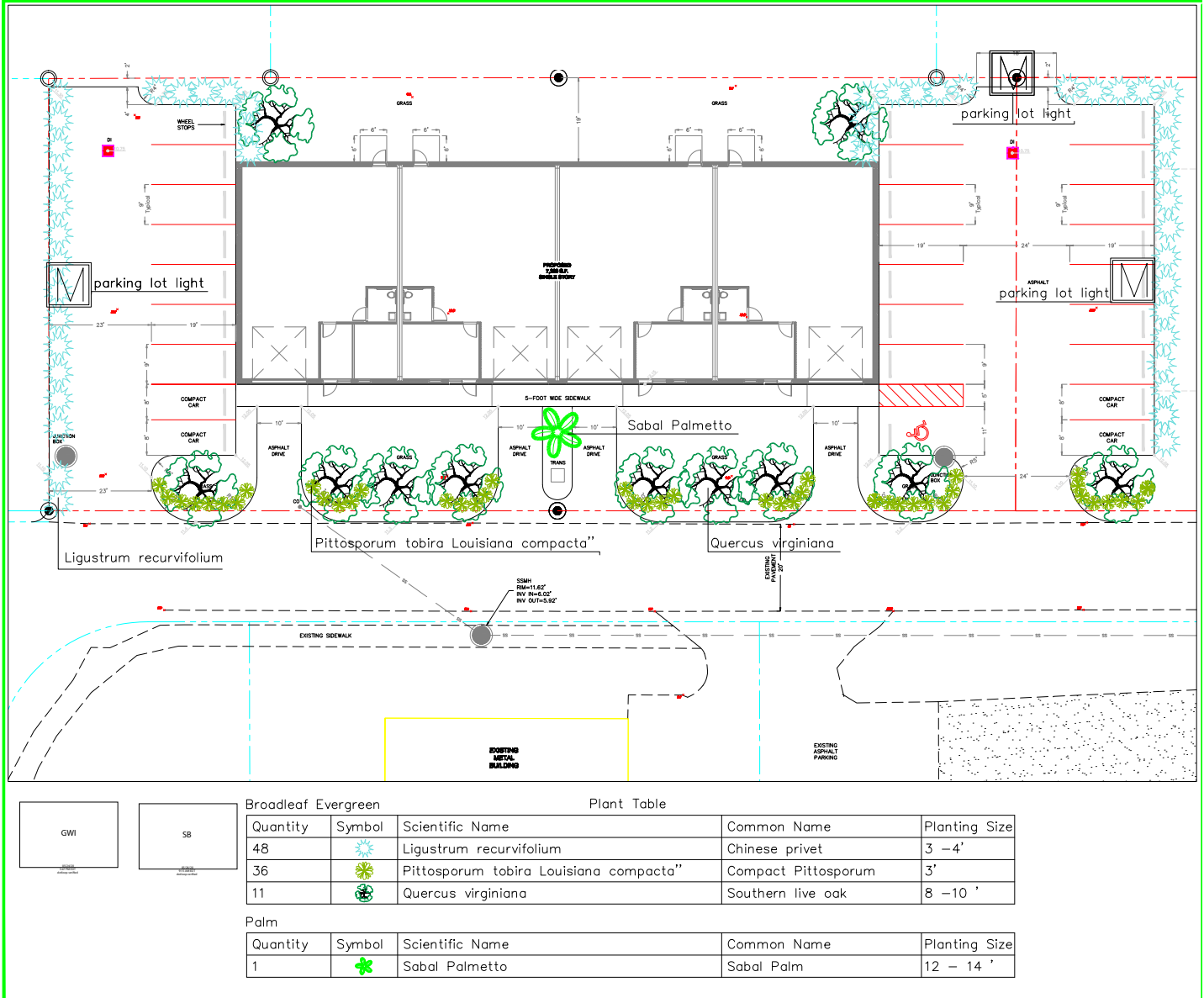
Allan Fox
910 612 8840
allan.fox@cbcsuncoast.com



SURF CITY FLEX SPACE

111 Sea Oaks Drive, Surf City, NC 28445

SALE



Broadleaf Evergreen

Plant Table

Quantity	Symbol	Scientific Name	Common Name	Planting Size
48		Ligustrum recurvifolium	Chinese privet	3 - 4'
36		Pittosporum tobira Louisiana compacta	Compact Pittosporum	3'
11		Quercus virginiana	Southern live oak	8 - 10'

Palm

Quantity	Symbol	Scientific Name	Common Name	Planting Size
1		Sabal Palmetto	Sabal Palm	12 - 14'

CBCSUNCOAST.COM

Glenn Imboden
910 520 5223
glenn.imboden@cbcsuncoast.com

Allan Fox
910 612 8840
allan.fox@cbcsuncoast.com



SURF CITY FLEX SPACE
111 Sea Oaks Drive, Surf City, NC 28445

SALE



CBCSUNCOAST.COM

Glenn Imboden
910 520 5223
glenn.imboden@cbcsuncoast.com

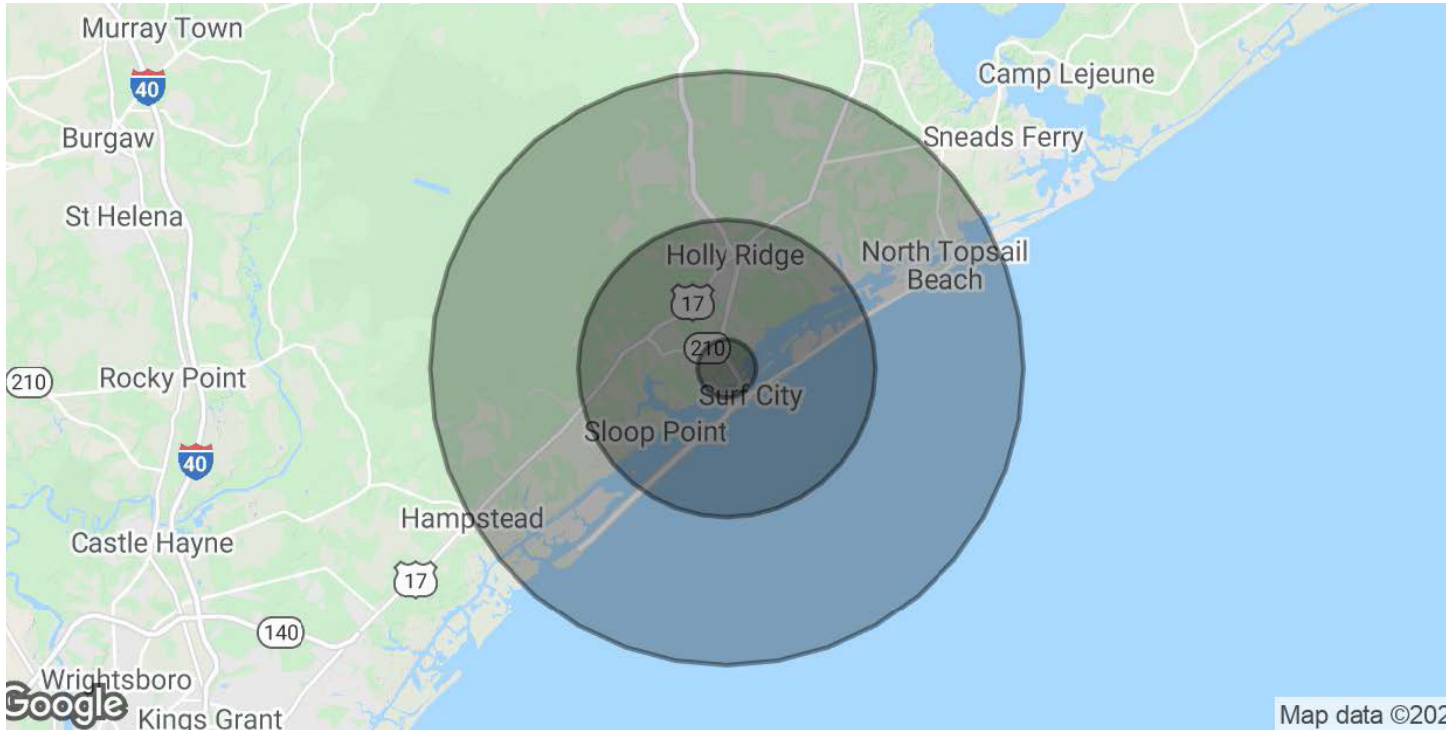
Allan Fox
910 612 8840
allan.fox@cbcsuncoast.com



SURF CITY FLEX SPACE

111 Sea Oaks Drive, Surf City, NC 28445

SALE



POPULATION	1 MILE	5 MILES	10 MILES
Total Population	733	7,926	17,967
Average age	44.4	43.8	42.3
Average age (Male)	44.2	42.1	40.3
Average age (Female)	43.3	45.0	44.7

HOUSEHOLDS & INCOME	1 MILE	5 MILES	10 MILES
Total households	338	3,573	7,736
of persons per HH	2.2	2.2	2.3
Average HH income	\$52,019	\$59,371	\$60,979
Average house value	\$604,087	\$371,518	\$305,899

* Demographic data derived from 2010 US Census

CBCSUNCOAST.COM

Glenn Imboden
 910 520 5223
glenn.imboden@cbcsuncoast.com

Allan Fox
 910 612 8840
allan.fox@cbcsuncoast.com



SURF CITY FLEX SPACE

111 Sea Oaks Drive, Surf City, NC 28445

SALE

COMMERCIAL BROKER

Glenn Imboden

910 520 5223

glenn.imboden@cbcscuncoast.com

NC #274957

COMMERCIAL BROKER

Allan Fox

910 612 8840

allan.fox@cbcscuncoast.com

NC #280325



SUN COAST PARTNERS

©2023 Coldwell Banker. All Rights Reserved. Coldwell Banker and the Coldwell Banker Commercial logos are trademarks of Coldwell Banker Real Estate LLC. The Coldwell Banker® System is comprised of company owned offices which are owned by a subsidiary of Realogy Brokerage Group LLC and franchised offices which are independently owned and operated. The Coldwell Banker System fully supports the principles of the Equal Opportunity Act.

*The land acreage and/or building square footage was obtained from the County's Geographical Information System or other electronic resources. For exact square footage and/or acreage, we recommend that prior to purchase, a prospective Buyer/Tenant obtain a boundary survey or have the building measured professionally.