

FOR SALE

3335-3347 NW ST. HELENS ROAD • PORTLAND, OR



Call for Pricing Information

MULTI-TENANT HEAVY INDUSTRIAL PROPERTY

PROPERTY:

Land: +/-2.37 Acres Total
Estimated Usable Area: +/-1.55 Acres
3 Buildings: 3335: +/-1,647 SF*
3345: +/- 9,886 SF*
3347: +/- 4,500 SF*
***Leased. Call for Details**

ZONING:

Base: IH (Heavy Industrial)
Overlay: C (Environmental Conservation)
Comprehensive/ Long-Range Plan: IS – Industrial Sanctuary
Development Areas: Enterprise Zone



For Information, Please Contact:

Andrew Bean, Senior Broker

abean@dougbean.com

1650 NW Naito Parkway • Suite 302 • Portland, OR 97209 • (503) 222-5100

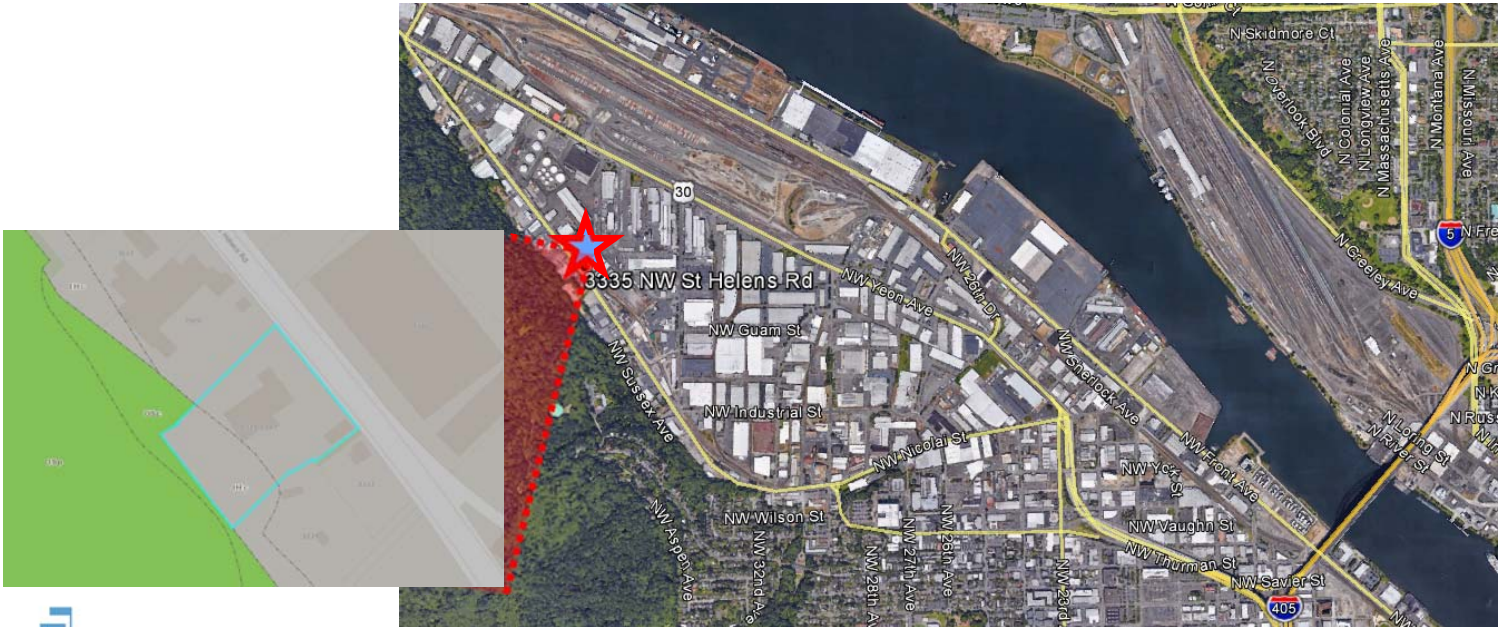
Information contained herein has been obtained from others and is considered to be reliable. However, a prospective purchaser or lessee is expected to verify all information to their own satisfaction. www.dougbean.com

FOR SALE

3335-3347 NW ST. HELENS ROAD • PORTLAND,

HIGHLIGHTS :

- Over 300 feet of street frontage on NW St. Helens Rd
- Fully Fenced
- Two Curb Cuts
- Highly sought after Northwest Industrial District location
- Less than 3 miles from the heart of Portland's City Center.
- Unique investment, re-positioning, and/or owner-user opportunity.
- Concrete and metal buildings with ample power and substantial excess land compacted & graveled for yard storage or development.



For Information, Please Contact:

Andrew Bean, Senior Broker

abean@dougbean.com

1650 NW Naito Parkway • Suite 302 • Portland, OR 97209 • (503) 222-5100

Information contained herein has been obtained from others and is considered to be reliable. However, a prospective purchaser or lessee is expected to verify all information to their own satisfaction. www.dougbean.com